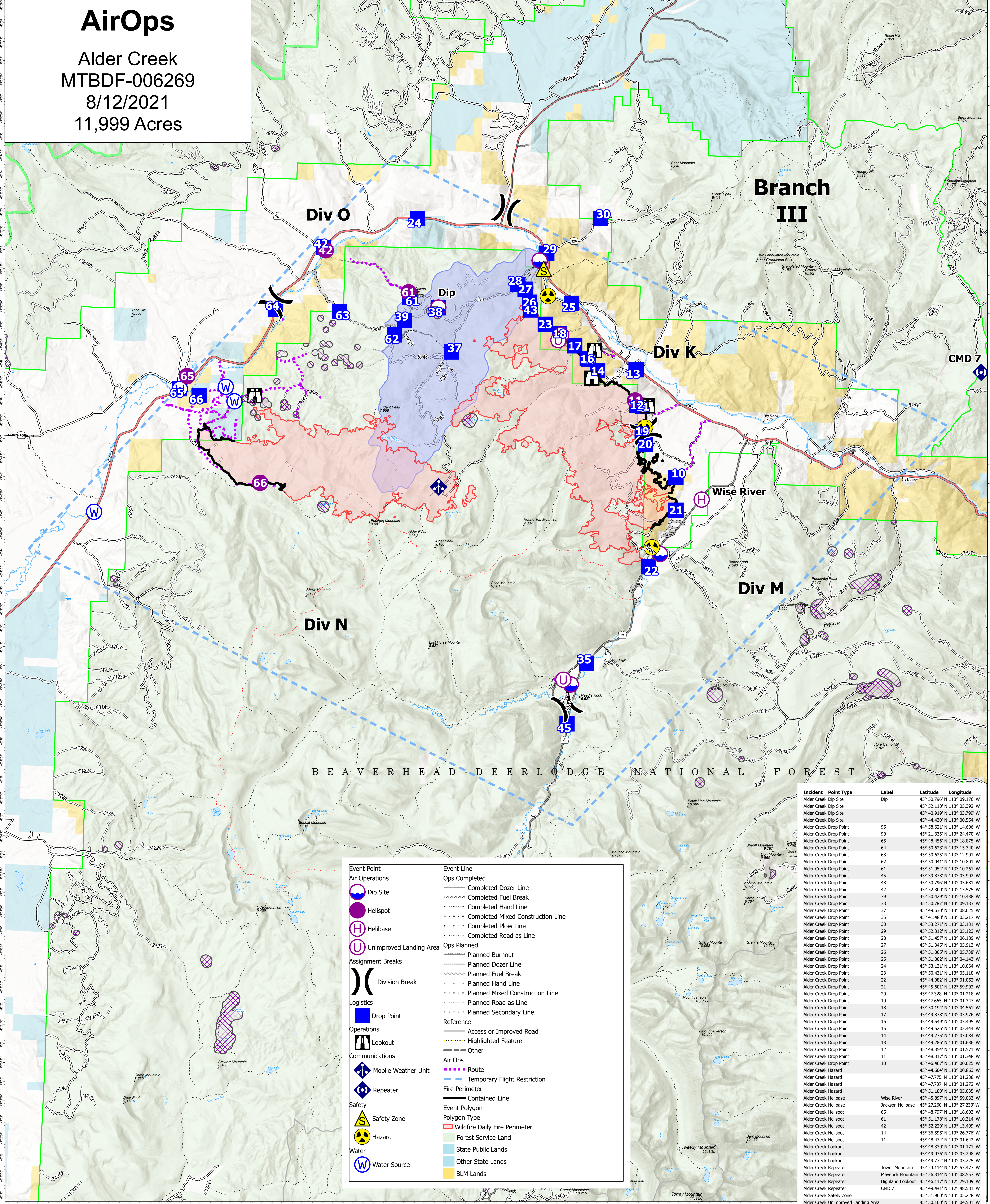


# AirOps

Alder Creek  
MTBDF-006269  
8/12/2021  
11,999 Acres



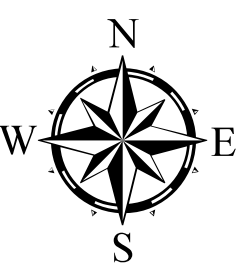
BEAVERHEAD-DEERLODGE NATIONAL FOREST

Event Point		Event Line	
	Dip Site		Completed Dozer Line
	Helispot		Completed Fuel Break
	Helibase		Completed Mixed Construction Line
	Unimproved Landing Area		Completed Plow Line
	Division Break		Completed Road as Line
	Drop Point		Planned Burnout
	Lookout		Planned Dozer Line
	Mobile Weather Unit		Planned Fuel Break
	Repeater		Planned Hand Line
	Safety Zone		Planned Mixed Construction Line
	Hazard		Planned Road as Line
	Water Source		Planned Secondary Line
			Access or Improved Road
			Highlighted Feature
			Other
			Air Ops Route
			Temporary Flight Restriction
			Fire Perimeter Contained Line
			Wildfire Daily Fire Perimeter
			Forest Service Land
			State Public Lands
			Other State Lands
			BLM Lands

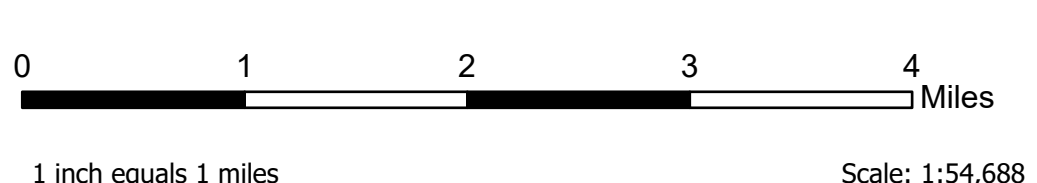
Incident	Point Type	Label	Latitude	Longitude
Alder Creek Dip Site	Dip		45° 50.796' N	113° 09.176' W
Alder Creek Dip Site	Dip		45° 52.110' N	113° 05.392' W
Alder Creek Dip Site	Dip		45° 40.919' N	113° 03.799' W
Alder Creek Dip Site	Dip		45° 44.430' N	113° 00.554' W
Alder Creek Drop Point	95		44° 58.621' N	113° 14.696' W
Alder Creek Drop Point	90		45° 21.336' N	113° 24.470' W
Alder Creek Drop Point	65		45° 48.456' N	113° 18.875' W
Alder Creek Drop Point	64		45° 50.623' N	113° 15.340' W
Alder Creek Drop Point	63		45° 50.625' N	113° 12.901' W
Alder Creek Drop Point	62		45° 50.041' N	113° 10.801' W
Alder Creek Drop Point	61		45° 51.054' N	113° 10.261' W
Alder Creek Drop Point	45		45° 39.873' N	113° 03.902' W
Alder Creek Drop Point	43		45° 50.796' N	113° 05.681' W
Alder Creek Drop Point	42		45° 52.300' N	113° 13.575' W
Alder Creek Drop Point	39		45° 50.429' N	113° 10.438' W
Alder Creek Drop Point	38		45° 50.787' N	113° 09.183' W
Alder Creek Drop Point	37		45° 49.630' N	113° 08.625' W
Alder Creek Drop Point	35		45° 51.688' N	113° 03.137' W
Alder Creek Drop Point	30		45° 53.271' N	113° 03.131' W
Alder Creek Drop Point	29		45° 52.312' N	113° 05.123' W
Alder Creek Drop Point	28		45° 51.457' N	113° 06.189' W
Alder Creek Drop Point	27		45° 51.345' N	113° 05.913' W
Alder Creek Drop Point	26		45° 51.005' N	113° 05.738' W
Alder Creek Drop Point	25		45° 51.002' N	113° 04.143' W
Alder Creek Drop Point	24		45° 53.131' N	113° 10.064' W
Alder Creek Drop Point	23		45° 50.431' N	113° 05.118' W
Alder Creek Drop Point	22		45° 44.082' N	113° 01.052' W
Alder Creek Drop Point	21		45° 45.601' N	113° 05.992' W
Alder Creek Drop Point	20		45° 47.328' N	113° 01.218' W
Alder Creek Drop Point	19		45° 47.665' N	113° 01.347' W
Alder Creek Drop Point	18		45° 50.194' N	113° 04.561' W
Alder Creek Drop Point	17		45° 49.878' N	113° 03.976' W
Alder Creek Drop Point	16		45° 49.549' N	113° 03.495' W
Alder Creek Drop Point	15		45° 49.526' N	113° 03.444' W
Alder Creek Drop Point	14		45° 49.235' N	113° 03.084' W
Alder Creek Drop Point	13		45° 49.286' N	113° 01.636' W
Alder Creek Drop Point	12		45° 48.354' N	113° 01.571' W
Alder Creek Drop Point	11		45° 48.317' N	113° 01.348' W
Alder Creek Drop Point	10		45° 46.467' N	113° 00.025' W
Alder Creek Hazard			45° 44.604' N	113° 00.863' W
Alder Creek Hazard			45° 47.775' N	113° 01.238' W
Alder Creek Hazard			45° 47.328' N	113° 01.272' W
Alder Creek Hazard			45° 51.180' N	113° 05.035' W
Alder Creek Helibase		Wise River	45° 45.897' N	113° 59.033' W
Alder Creek Helibase		Jackson Helibase	45° 27.601' N	113° 27.233' W
Alder Creek Helispot	65		45° 48.797' N	113° 18.603' W
Alder Creek Helispot	61		45° 51.178' N	113° 10.314' W
Alder Creek Helispot	42		45° 52.229' N	113° 13.499' W
Alder Creek Helispot	14		45° 36.595' N	113° 26.776' W
Alder Creek Helispot	11		45° 48.474' N	113° 01.642' W
Alder Creek Lookout			45° 48.339' N	113° 01.171' W
Alder Creek Lookout			45° 49.036' N	113° 03.298' W
Alder Creek Lookout			45° 49.772' N	113° 03.225' W
Alder Creek Repeater		Tower Mountain	45° 24.114' N	112° 53.477' W
Alder Creek Repeater		Maverick Mountain	45° 26.314' N	113° 08.557' W
Alder Creek Repeater		Highland Lookout	45° 46.117' N	112° 29.109' W
Alder Creek Repeater		CMD 7	45° 49.441' N	112° 48.581' W
Alder Creek Safety Zone			45° 51.900' N	113° 05.228' W
Alder Creek Unimproved Landing Area			45° 50.160' N	113° 04.501' W
Alder Creek Unimproved Landing Area			45° 50.021' N	113° 04.602' W
Alder Creek Unimproved Landing Area			45° 41.040' N	113° 04.083' W

### Flight Restriction Information

Alder Creek - 1/7629- 12,500ft ceiling  
Trail Creek - 1/7630 - 11,500ft ceiling  
Black Mountain - 1/1730 - 10,500ft ceiling



Fire perimeter updated from  
Acres from IR on 08/12/21 00:56



SA Blue Team  
8/12/2021 0702  
North American 1983 Datum. LatLong Grid