

AirOps

Trail Creek
MTBDF-006272
8/12/2021
36,076 Acres

TERROOT NATIONAL FOREST

BEAVERHEAD-DEERLodge NATIONAL FOREST

Air Operations

- Dip Site
- Helispot
- Sling Site

Assignment Breaks

- Division Break

Logistics

- Drop Point
- Staging Area

Operations

- Lookout

Repair

- Water Development or Draft Site

Communications

- Mobile Weather Unit
- Repeater

Safety

- Safety Zone
- Hazard

Water

- Water Source

Event Line

Ops Completed

- Completed Dozer Line
- Completed Fuel Break
- Completed Hand Line
- Completed Road as Line

Ops Planned

- Planned Fuel Break
- Planned Hand Line
- Planned Road as Line
- Planned Secondary Line

Reference

- Access or Improved Road
- Fence

Repair

- Road Repair

Safety

- Escape Route

Air Ops

- Retardant Drop
- Temporary Flight Restriction

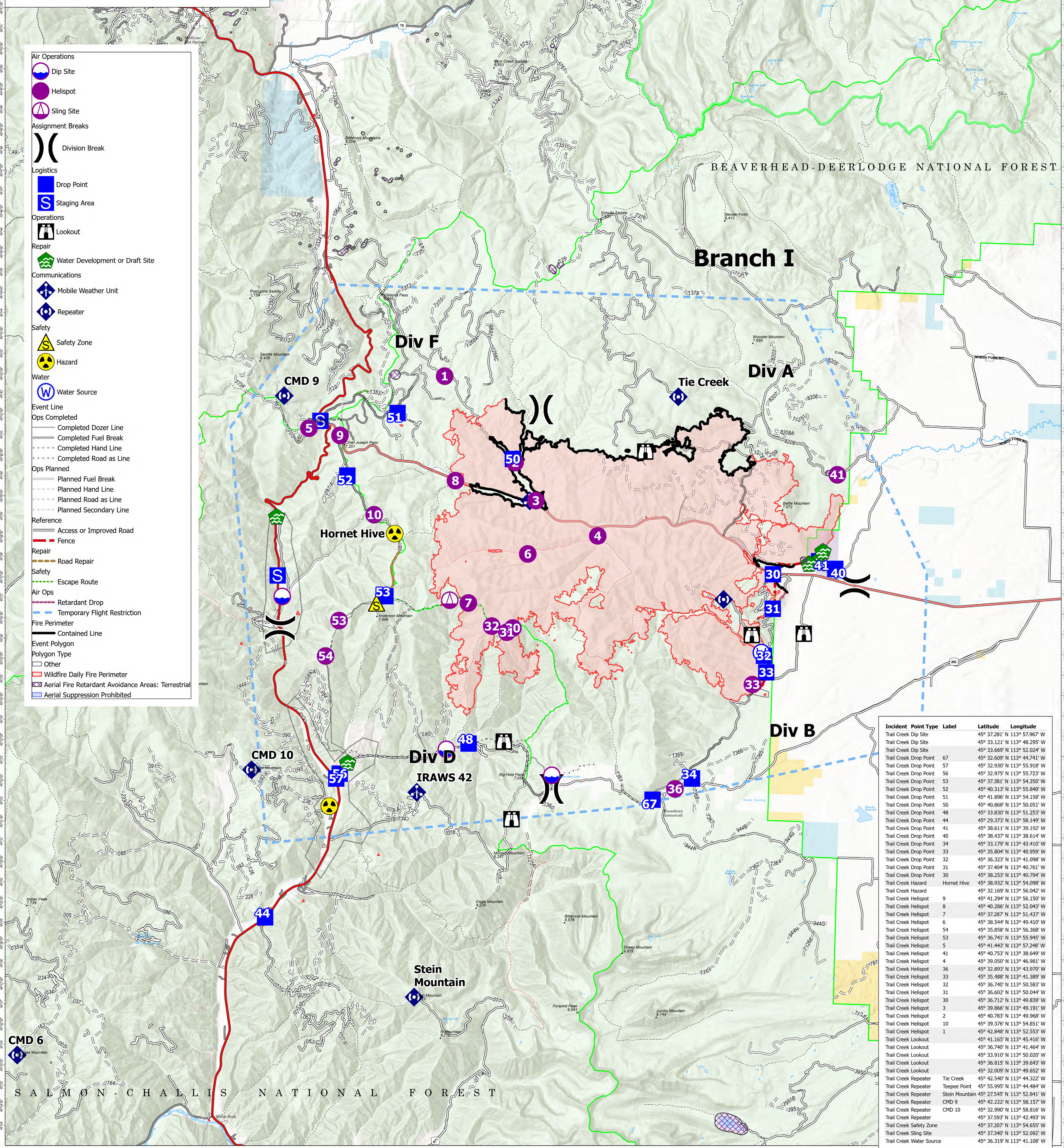
Fire Perimeter

- Contained Line

Event Polygon

Polygon Type

- Other
- Wildfire Daily Fire Perimeter
- Aerial Fire Retardant Avoidance Areas: Terrestrial
- Aerial Suppression Prohibited



Incident Point Type	Label	Latitude	Longitude
Trail Creek Dip Site		45° 37.281' N 113° 57.967' W	
Trail Creek Dip Site		45° 33.121' N 113° 48.295' W	
Trail Creek Dip Site		45° 33.669' N 113° 52.024' W	
Trail Creek Drop Point	67	45° 32.609' N 113° 44.741' W	
Trail Creek Drop Point	57	45° 32.930' N 113° 55.918' W	
Trail Creek Drop Point	56	45° 32.975' N 113° 55.723' W	
Trail Creek Drop Point	53	45° 37.381' N 113° 54.350' W	
Trail Creek Drop Point	52	45° 40.313' N 113° 55.840' W	
Trail Creek Drop Point	51	45° 41.896' N 113° 54.158' W	
Trail Creek Drop Point	50	45° 40.868' N 113° 50.051' W	
Trail Creek Drop Point	48	45° 33.830' N 113° 51.253' W	
Trail Creek Drop Point	44	45° 29.373' N 113° 58.149' W	
Trail Creek Drop Point	41	45° 38.611' N 113° 39.192' W	
Trail Creek Drop Point	40	45° 38.437' N 113° 38.614' W	
Trail Creek Drop Point	34	45° 33.179' N 113° 43.410' W	
Trail Creek Drop Point	33	45° 35.804' N 113° 40.959' W	
Trail Creek Drop Point	32	45° 36.323' N 113° 41.098' W	
Trail Creek Drop Point	31	45° 37.404' N 113° 40.761' W	
Trail Creek Drop Point	30	45° 38.253' N 113° 40.794' W	
Trail Creek Hazard	Hornet Hive	45° 38.932' N 113° 54.098' W	
Trail Creek Hazard		45° 32.169' N 113° 56.042' W	
Trail Creek Helispot	9	45° 41.294' N 113° 56.150' W	
Trail Creek Helispot	8	45° 40.286' N 113° 52.043' W	
Trail Creek Helispot	7	45° 37.287' N 113° 51.437' W	
Trail Creek Helispot	6	45° 38.544' N 113° 49.410' W	
Trail Creek Helispot	54	45° 35.858' N 113° 56.368' W	
Trail Creek Helispot	53	45° 36.741' N 113° 55.945' W	
Trail Creek Helispot	5	45° 41.443' N 113° 57.248' W	
Trail Creek Helispot	41	45° 40.753' N 113° 38.649' W	
Trail Creek Helispot	4	45° 39.050' N 113° 46.981' W	
Trail Creek Helispot	36	45° 32.893' N 113° 43.970' W	
Trail Creek Helispot	33	45° 35.488' N 113° 41.389' W	
Trail Creek Helispot	32	45° 36.740' N 113° 50.583' W	
Trail Creek Helispot	31	45° 36.602' N 113° 50.044' W	
Trail Creek Helispot	30	45° 36.712' N 113° 49.839' W	
Trail Creek Helispot	3	45° 39.866' N 113° 49.191' W	
Trail Creek Helispot	2	45° 40.783' N 113° 49.968' W	
Trail Creek Helispot	10	45° 39.376' N 113° 54.851' W	
Trail Creek Helispot	1	45° 42.848' N 113° 52.553' W	
Trail Creek Lookout		45° 41.165' N 113° 45.416' W	
Trail Creek Lookout		45° 36.740' N 113° 41.464' W	
Trail Creek Lookout		45° 33.910' N 113° 50.020' W	
Trail Creek Lookout		45° 36.815' N 113° 39.643' W	
Trail Creek Lookout		45° 32.009' N 113° 49.652' W	
Trail Creek Repeater	Tie Creek	45° 42.540' N 113° 44.322' W	
Trail Creek Repeater	Teepee Point	45° 55.995' N 113° 44.484' W	
Trail Creek Repeater	Stein Mountain	45° 27.545' N 113° 52.841' W	
Trail Creek Repeater	CMD 9	45° 42.222' N 113° 58.157' W	
Trail Creek Repeater	CMD 10	45° 32.990' N 113° 58.816' W	
Trail Creek Repeater		45° 37.593' N 113° 42.493' W	
Trail Creek Safety Zone		45° 37.207' N 113° 54.655' W	
Trail Creek Sling Site		45° 37.340' N 113° 52.092' W	
Trail Creek Water Source		45° 36.319' N 113° 41.108' W	

Flight Restriction Information

Alder Creek - 1/7629- 12,500ft ceiling
Trail Creek - 1/7630 - 11,500ft ceiling
Black Mountain - 1/1730 - 10,500ft ceiling



SA Blue Team
8/12/2021 0726
North American 1983 Datum. LatLong Grid

Fire perimeter updated from Acres from IR on 08/12/21 01:16

Scale: 1:54,688

1 inch equals 1 mile