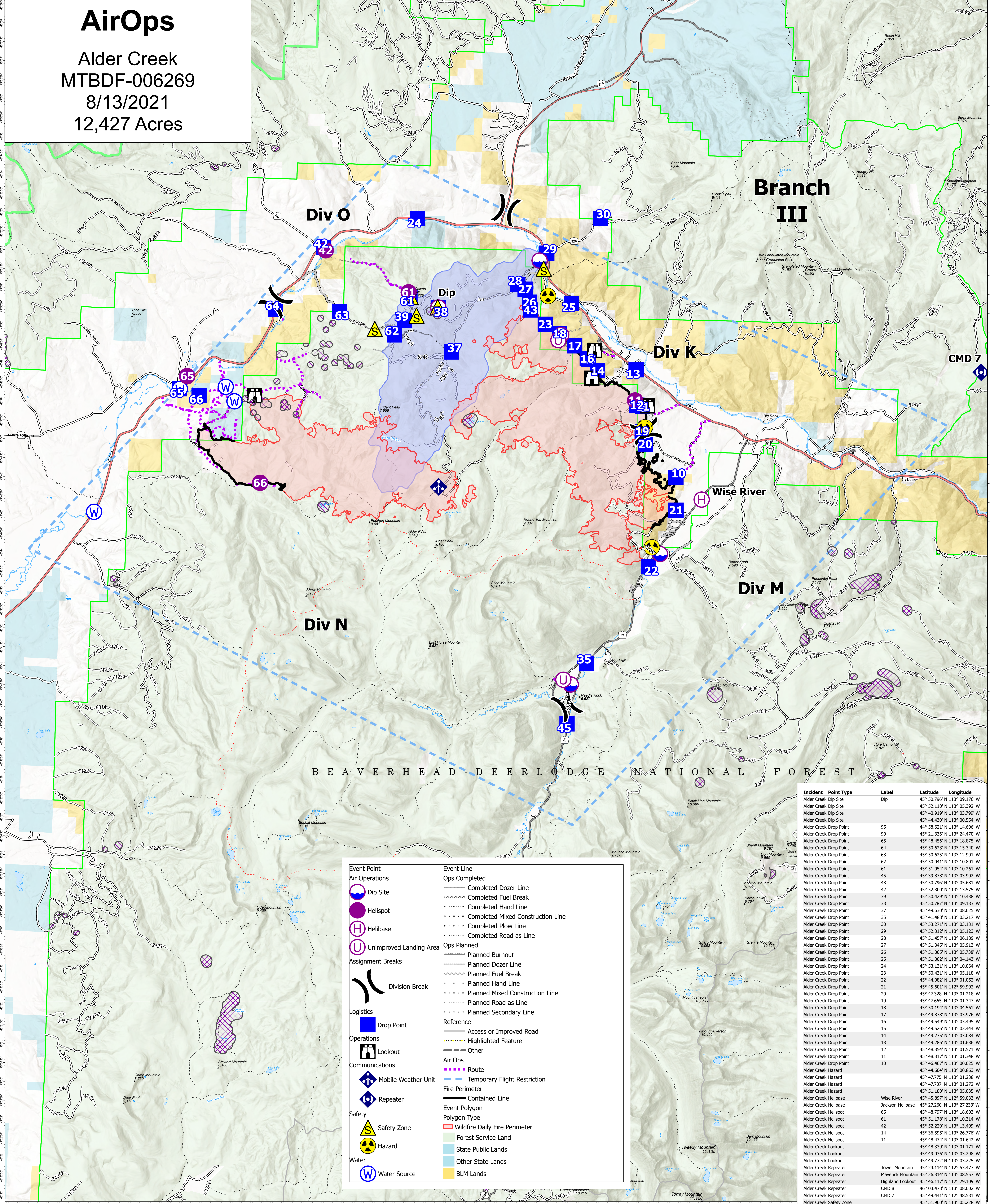


# AirOps

Alder Creek  
MTBDF-006269  
8/13/2021  
12,427 Acres



Event Point	Event Line
Dip Site	Completed Dozer Line
Helispot	Completed Fuel Break
Helibase	Completed Hand Line
Unimproved Landing Area	Completed Mixed Construction Line
Assignment Break	Completed Plow Line
Division Break	Completed Road as Line
Drop Point	Planned Burnout
Lookout	Planned Dozer Line
Mobile Weather Unit	Planned Fuel Break
Repeater	Planned Hand Line
Safety Zone	Planned Mixed Construction Line
Hazard	Planned Road as Line
Water Source	Planned Secondary Line
	Access or Improved Road
	Highlighted Feature
	Other
	Air Ops
	Route
	Temporary Flight Restriction
	Fire Perimeter
	Contained Line
	Event Polygon
	Wildfire Daily Fire Perimeter
	Forest Service Land
	State Public Lands
	Other State Lands
	BLM Lands

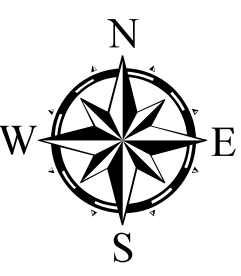
Incident	Point Type	Label	Latitude	Longitude
Alder Creek Dip Site	Dip		45° 50.796' N	113° 09.176' W
Alder Creek Dip Site	Dip		45° 52.110' N	113° 05.392' W
Alder Creek Dip Site	Dip		45° 49.919' N	113° 03.799' W
Alder Creek Dip Site	Dip		45° 44.430' N	113° 00.554' W
Alder Creek Drop Point	95		44° 58.621' N	113° 14.696' W
Alder Creek Drop Point	90		45° 21.336' N	113° 24.470' W
Alder Creek Drop Point	65		45° 48.456' N	113° 18.875' W
Alder Creek Drop Point	64		45° 50.623' N	113° 15.340' W
Alder Creek Drop Point	63		45° 50.625' N	113° 12.901' W
Alder Creek Drop Point	62		45° 50.041' N	113° 10.801' W
Alder Creek Drop Point	61		45° 51.054' N	113° 10.261' W
Alder Creek Drop Point	45		45° 39.873' N	113° 03.902' W
Alder Creek Drop Point	43		45° 50.796' N	113° 05.681' W
Alder Creek Drop Point	42		45° 52.300' N	113° 13.575' W
Alder Creek Drop Point	39		45° 50.429' N	113° 10.438' W
Alder Creek Drop Point	38		45° 50.787' N	113° 09.183' W
Alder Creek Drop Point	37		45° 49.630' N	113° 08.625' W
Alder Creek Drop Point	35		45° 51.688' N	113° 03.137' W
Alder Creek Drop Point	30		45° 53.271' N	113° 03.131' W
Alder Creek Drop Point	29		45° 52.312' N	113° 05.123' W
Alder Creek Drop Point	28		45° 51.457' N	113° 06.189' W
Alder Creek Drop Point	27		45° 51.345' N	113° 05.913' W
Alder Creek Drop Point	26		45° 51.005' N	113° 05.738' W
Alder Creek Drop Point	25		45° 51.002' N	113° 04.143' W
Alder Creek Drop Point	24		45° 53.131' N	113° 10.064' W
Alder Creek Drop Point	23		45° 50.431' N	113° 05.118' W
Alder Creek Drop Point	22		45° 44.082' N	113° 01.052' W
Alder Creek Drop Point	21		45° 45.601' N	113° 05.992' W
Alder Creek Drop Point	20		45° 47.328' N	113° 01.218' W
Alder Creek Drop Point	19		45° 47.655' N	113° 01.347' W
Alder Creek Drop Point	18		45° 50.194' N	113° 04.561' W
Alder Creek Drop Point	17		45° 49.878' N	113° 03.976' W
Alder Creek Drop Point	16		45° 49.549' N	113° 03.495' W
Alder Creek Drop Point	15		45° 49.526' N	113° 03.444' W
Alder Creek Drop Point	14		45° 49.235' N	113° 03.084' W
Alder Creek Drop Point	13		45° 49.286' N	113° 01.636' W
Alder Creek Drop Point	12		45° 48.354' N	113° 01.571' W
Alder Creek Drop Point	11		45° 48.317' N	113° 01.348' W
Alder Creek Drop Point	10		45° 46.467' N	113° 00.025' W
Alder Creek Hazard			45° 44.604' N	113° 00.863' W
Alder Creek Hazard			45° 47.775' N	113° 01.238' W
Alder Creek Hazard			45° 47.327' N	113° 01.272' W
Alder Creek Hazard			45° 51.180' N	113° 05.035' W
Alder Creek Helibase		Wise River	45° 45.897' N	113° 59.033' W
Alder Creek Helibase		Jackson Helibase	45° 27.601' N	113° 27.233' W
Alder Creek Helispot	65		45° 48.797' N	113° 18.603' W
Alder Creek Helispot	61		45° 51.178' N	113° 10.314' W
Alder Creek Helispot	42		45° 52.229' N	113° 13.499' W
Alder Creek Helispot	14		45° 36.595' N	113° 26.776' W
Alder Creek Helispot	11		45° 48.474' N	113° 01.642' W
Alder Creek Lookout			45° 48.339' N	113° 01.171' W
Alder Creek Lookout			45° 49.036' N	113° 03.298' W
Alder Creek Lookout			45° 49.772' N	113° 03.225' W
Alder Creek Repeater		Tower Mountain	45° 24.114' N	112° 53.477' W
Alder Creek Repeater		Maverick Mountain	45° 26.314' N	113° 08.557' W
Alder Creek Repeater		Highland Lookout	45° 46.117' N	112° 29.109' W
Alder Creek Repeater		CMD 8	46° 03.788' N	113° 08.002' W
Alder Creek Repeater		CMD 7	45° 49.441' N	112° 48.581' W
Alder Creek Safety Zone			45° 51.900' N	113° 05.228' W
Alder Creek Unimproved Landing Area			45° 50.160' N	113° 04.501' W
Alder Creek Unimproved Landing Area			45° 50.021' N	113° 04.602' W
Alder Creek Unimproved Landing Area			45° 41.040' N	113° 04.083' W

### Flight Restriction Information

Alder Creek - 1/7629- 12,500ft ceiling  
Trail Creek - 1/7630 - 11,500ft ceiling  
Black Mountain - 1/1730 - 10,500ft ceiling



SA Blue Team  
8/13/2021 0621  
North American 1983 Datum. LatLong Grid



Fire perimeter updated from  
Acres from IR on 08/12/21 21:16

0 1 2 3 4 Miles  
Scale: 1:54,688