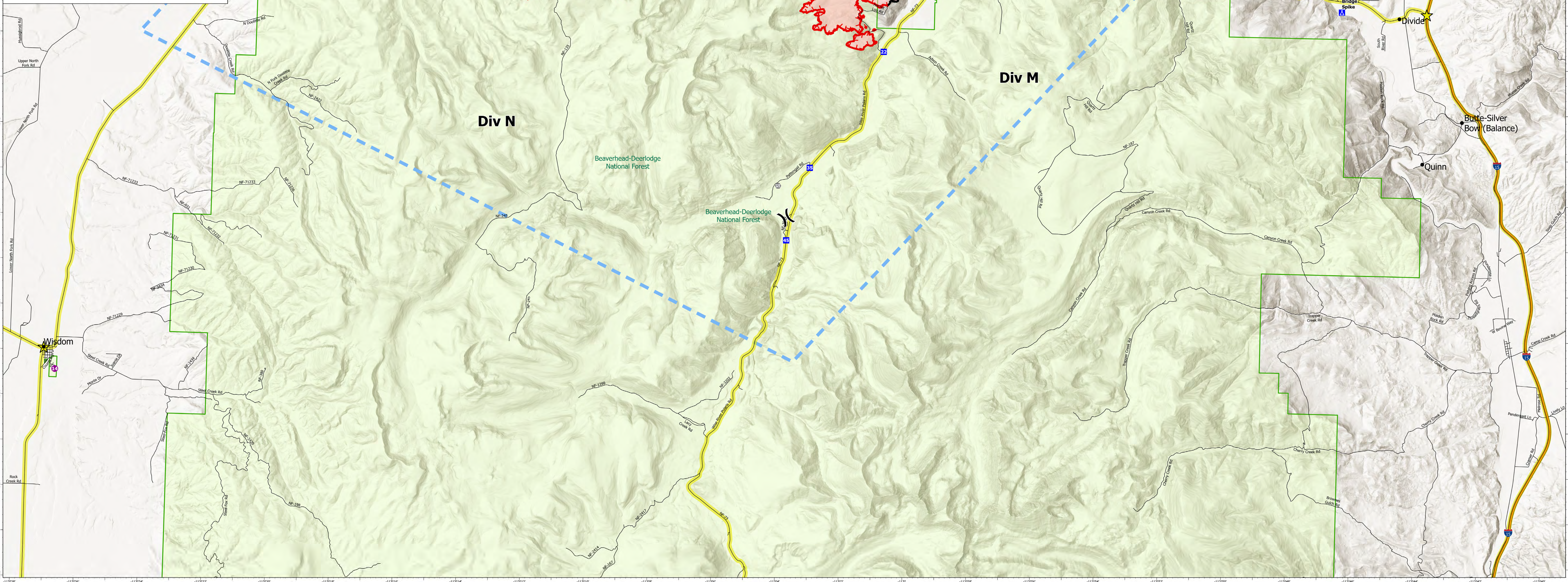
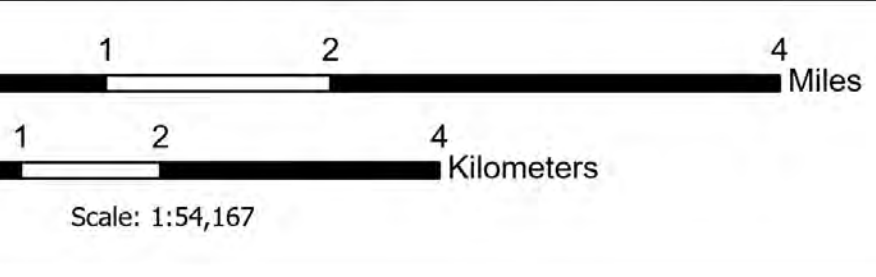


Incident Point Type	Label	Latitude	Longitude
Alder Creek Dip Site		45° 52.110' N 113° 05.392' W	
Alder Creek Dip Site		45° 49.915' N 113° 03.799' W	
Alder Creek Dip Site		45° 44.430' N 113° 00.554' W	
Alder Creek Dip Site	Dip	45° 50.796' N 113° 09.176' W	
Alder Creek Drop Point	10	45° 46.467' N 113° 00.025' W	
Alder Creek Drop Point	11	45° 48.317' N 113° 01.348' W	
Alder Creek Drop Point	12	45° 48.354' N 113° 01.571' W	
Alder Creek Drop Point	13	45° 49.286' N 113° 01.636' W	
Alder Creek Drop Point	14	45° 49.235' N 113° 03.084' W	
Alder Creek Drop Point	15	45° 49.526' N 113° 03.444' W	
Alder Creek Drop Point	16	45° 49.549' N 113° 03.495' W	
Alder Creek Drop Point	17	45° 49.876' N 113° 03.976' W	
Alder Creek Drop Point	18	45° 50.194' N 113° 04.561' W	
Alder Creek Drop Point	19	45° 47.665' N 113° 01.347' W	
Alder Creek Drop Point	20	45° 47.328' N 113° 01.218' W	
Alder Creek Drop Point	21	45° 45.601' N 112° 59.992' W	
Alder Creek Drop Point	22	45° 44.082' N 113° 01.052' W	
Alder Creek Drop Point	23	45° 50.431' N 113° 05.118' W	
Alder Creek Drop Point	24	45° 53.131' N 113° 10.064' W	
Alder Creek Drop Point	25	45° 51.002' N 113° 04.143' W	
Alder Creek Drop Point	26	45° 51.005' N 113° 05.738' W	
Alder Creek Drop Point	27	45° 51.345' N 113° 05.913' W	
Alder Creek Drop Point	28	45° 51.457' N 113° 06.189' W	
Alder Creek Drop Point	29	45° 52.312' N 113° 05.123' W	
Alder Creek Drop Point	30	45° 53.271' N 113° 03.131' W	
Alder Creek Drop Point	35	45° 41.488' N 113° 03.217' W	
Alder Creek Drop Point	37	45° 49.630' N 113° 08.625' W	
Alder Creek Drop Point	38	45° 50.787' N 113° 09.183' W	
Alder Creek Drop Point	39	45° 50.429' N 113° 10.438' W	
Alder Creek Drop Point	42	45° 52.300' N 113° 13.575' W	
Alder Creek Drop Point	43	45° 50.796' N 113° 05.681' W	
Alder Creek Drop Point	45	45° 39.873' N 113° 03.902' W	
Alder Creek Drop Point	61	45° 51.054' N 113° 10.261' W	
Alder Creek Drop Point	62	45° 50.041' N 113° 10.801' W	
Alder Creek Drop Point	63	45° 50.625' N 113° 12.901' W	
Alder Creek Drop Point	64	45° 50.623' N 113° 15.340' W	
Alder Creek Drop Point	65	45° 48.456' N 113° 18.875' W	
Alder Creek Drop Point	90	45° 21.336' N 113° 24.470' W	
Alder Creek Drop Point	95	44° 58.621' N 113° 14.696' W	
Alder Creek Hazard		45° 44.604' N 113° 00.863' W	
Alder Creek Hazard		45° 47.775' N 113° 01.238' W	
Alder Creek Hazard		45° 47.737' N 113° 01.272' W	
Alder Creek Hazard		45° 51.180' N 113° 05.035' W	
Alder Creek Helibase	Jackson Helibase	45° 27.260' N 113° 27.233' W	
Alder Creek Helibase	Wise River	45° 45.897' N 112° 59.033' W	
Alder Creek Helispot		45° 48.474' N 113° 01.642' W	
Alder Creek Helispot		45° 36.595' N 113° 26.776' W	
Alder Creek Helispot		45° 52.225' N 113° 13.499' W	
Alder Creek Helispot		45° 51.178' N 113° 10.314' W	
Alder Creek Helispot		45° 48.797' N 113° 18.603' W	
Alder Creek Lookout		45° 48.339' N 113° 01.171' W	
Alder Creek Lookout		45° 49.036' N 113° 03.298' W	
Alder Creek Lookout		45° 49.772' N 113° 03.225' W	
Alder Creek Repeater	CMD 7	45° 49.441' N 112° 48.581' W	
Alder Creek Repeater	CMD 8	46° 03.478' N 113° 08.002' W	
Alder Creek Repeater	Highland Lookout	45° 46.117' N 112° 29.109' W	
Alder Creek Repeater	Maverick Mountain	45° 26.314' N 113° 08.557' W	
Alder Creek Repeater	Tower Mountain	45° 24.114' N 112° 53.477' W	
Alder Creek Safety Zone		45° 51.900' N 113° 05.228' W	
Alder Creek Unimproved Landing Area		45° 50.160' N 113° 04.501' W	
Alder Creek Unimproved Landing Area		45° 50.021' N 113° 04.602' W	
Alder Creek Unimproved Landing Area		45° 41.400' N 113° 04.083' W	



Alder Creek, Christensen Transportation Map
 Alder Creek 12,427 Acres
 Christensen 9,513 Acres
 Trail Creek 36,380 Acres
 Black Mountain 1,042 Acres



- Helispot
- Helibase
- ⌘ Division Break
- Drop Point
- Ⓜ Camp
- Ⓜ Lookout
- Ⓜ Gate
- Ⓜ Mobile Weather Unit
- Ⓜ Repeater
- Ⓜ Water Source
- Ⓜ Temporary Flight Restriction
- Ⓜ Fire Edge
- Ⓜ Contained Line
- Ⓜ Wildfire Daily Fire Perimeter
- Ⓜ Stateboundary



Day Operational Period 8/13/2021
 NAD 1983 UTM Zone 12N
 Map Created 8/13/2021 8:38 AM by gromack