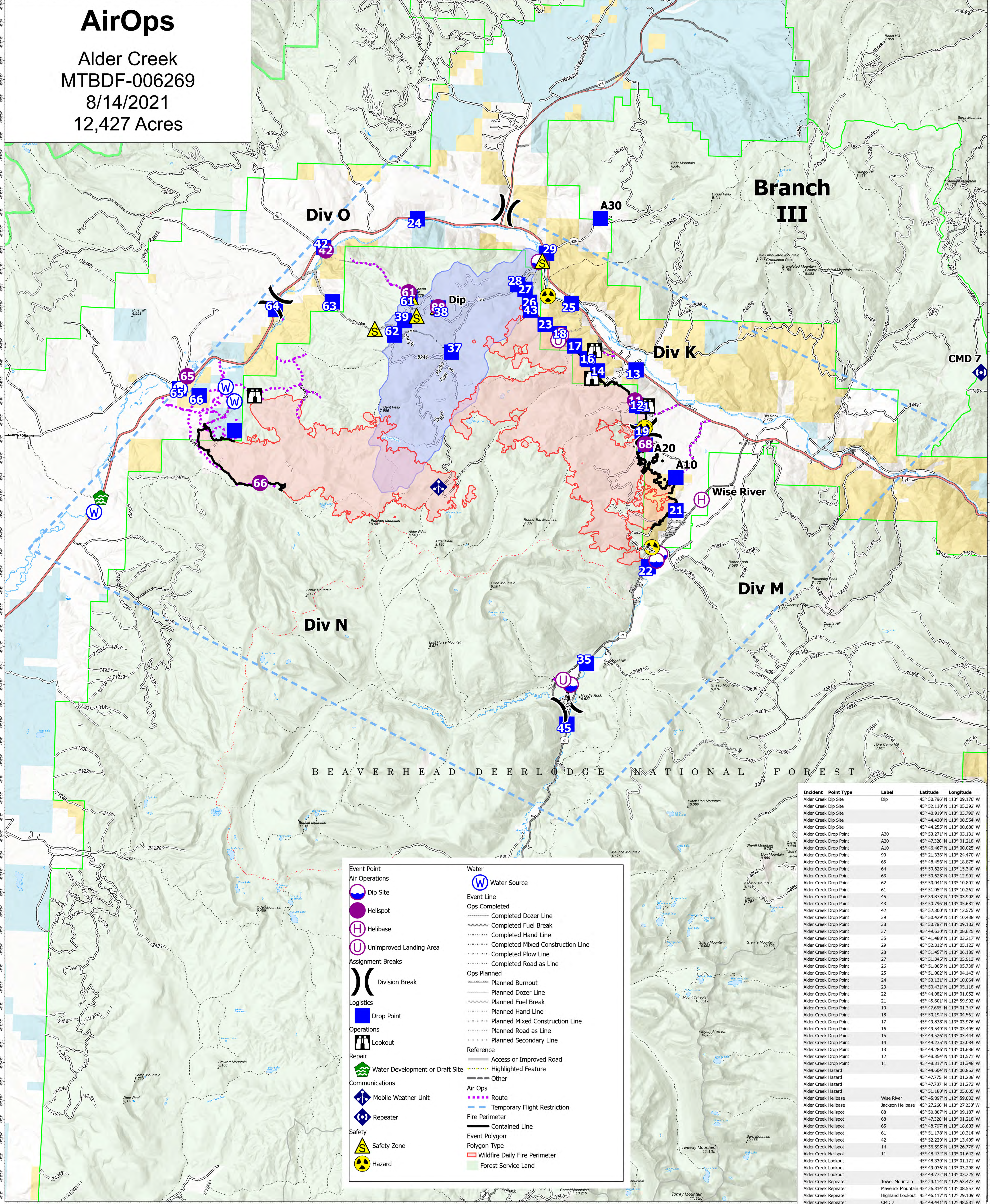


AirOps

Alder Creek
MTBDF-006269
8/14/2021
12,427 Acres



BEAVERHEAD-DEER LODGE NATIONAL FOREST

Event Point	Water
Air Operations	Water Source
Dip Site	Event Line
Helispot	— Completed Dozer Line
Helibase	— Completed Fuel Break
Unimproved Landing Area	— Completed Hand Line
Assignment Breaks	— Completed Mixed Construction Line
Division Break	— Completed Plow Line
Logistics	— Completed Road as Line
Drop Point	Ops Planned
Operations	— Planned Burnout
Lookout	— Planned Dozer Line
Repair	— Planned Fuel Break
Water Development or Draft Site	— Planned Hand Line
Communications	— Planned Mixed Construction Line
Mobile Weather Unit	— Planned Road as Line
Repeater	— Planned Secondary Line
Safety	Reference
Safety Zone	— Access or Improved Road
Hazard	— Highlighted Feature
	— Other
	Air Ops
	— Route
	— Temporary Flight Restriction
	Fire Perimeter
	— Contained Line
	Event Polygon
	— Polygon Type
	— Wildfire Daily Fire Perimeter
	— Forest Service Land

Incident	Point Type	Label	Latitude	Longitude
Alder Creek Dip Site	Dip		45° 50.796' N 113° 09.176' W	
Alder Creek Dip Site	Dip		45° 52.110' N 113° 05.392' W	
Alder Creek Dip Site	Dip		45° 40.919' N 113° 03.799' W	
Alder Creek Dip Site	Dip		45° 44.430' N 113° 00.554' W	
Alder Creek Drop Point	A30		45° 53.271' N 113° 03.131' W	
Alder Creek Drop Point	A20		45° 47.328' N 113° 01.218' W	
Alder Creek Drop Point	A10		45° 46.467' N 113° 04.025' W	
Alder Creek Drop Point	90		45° 21.336' N 113° 24.470' W	
Alder Creek Drop Point	65		45° 48.456' N 113° 18.875' W	
Alder Creek Drop Point	64		45° 50.623' N 113° 15.340' W	
Alder Creek Drop Point	63		45° 50.625' N 113° 12.901' W	
Alder Creek Drop Point	62		45° 50.041' N 113° 10.801' W	
Alder Creek Drop Point	61		45° 51.054' N 113° 10.261' W	
Alder Creek Drop Point	45		45° 39.873' N 113° 03.902' W	
Alder Creek Drop Point	43		45° 50.796' N 113° 05.681' W	
Alder Creek Drop Point	42		45° 52.300' N 113° 13.575' W	
Alder Creek Drop Point	39		45° 53.271' N 113° 03.131' W	
Alder Creek Drop Point	38		45° 50.767' N 113° 09.183' W	
Alder Creek Drop Point	37		45° 49.630' N 113° 08.625' W	
Alder Creek Drop Point	35		45° 41.488' N 113° 03.217' W	
Alder Creek Drop Point	29		45° 52.312' N 113° 05.123' W	
Alder Creek Drop Point	28		45° 51.457' N 113° 06.189' W	
Alder Creek Drop Point	27		45° 51.345' N 113° 05.913' W	
Alder Creek Drop Point	26		45° 51.005' N 113° 05.738' W	
Alder Creek Drop Point	25		45° 51.002' N 113° 04.143' W	
Alder Creek Drop Point	24		45° 53.131' N 113° 10.064' W	
Alder Creek Drop Point	23		45° 50.431' N 113° 05.118' W	
Alder Creek Drop Point	22		45° 44.082' N 113° 01.052' W	
Alder Creek Drop Point	21		45° 45.601' N 113° 03.225' W	
Alder Creek Drop Point	19		45° 47.665' N 113° 01.347' W	
Alder Creek Drop Point	18		45° 50.194' N 113° 04.561' W	
Alder Creek Drop Point	17		45° 49.878' N 113° 03.976' W	
Alder Creek Drop Point	16		45° 49.549' N 113° 03.495' W	
Alder Creek Drop Point	15		45° 49.526' N 113° 03.444' W	
Alder Creek Drop Point	14		45° 49.235' N 113° 03.084' W	
Alder Creek Drop Point	13		45° 49.286' N 113° 01.636' W	
Alder Creek Drop Point	12		45° 48.354' N 113° 01.571' W	
Alder Creek Drop Point	11		45° 48.317' N 113° 01.348' W	
Alder Creek Hazard			45° 44.604' N 113° 00.863' W	
Alder Creek Hazard			45° 47.775' N 113° 01.238' W	
Alder Creek Hazard			45° 47.737' N 113° 01.272' W	
Alder Creek Hazard			45° 49.772' N 113° 03.225' W	
Alder Creek Helibase	Wise River		45° 51.180' N 113° 05.035' W	
Alder Creek Helibase	Jackson Helibase		45° 27.660' N 113° 27.233' W	
Alder Creek Helispot	88		45° 50.807' N 113° 09.187' W	
Alder Creek Helispot	68		45° 47.328' N 113° 01.218' W	
Alder Creek Helispot	65		45° 48.797' N 113° 18.603' W	
Alder Creek Helispot	61		45° 51.178' N 113° 10.314' W	
Alder Creek Helispot	42		45° 52.229' N 113° 13.499' W	
Alder Creek Helispot	14		45° 36.595' N 113° 26.776' W	
Alder Creek Helispot	11		45° 48.474' N 113° 01.642' W	
Alder Creek Lookout			45° 48.339' N 113° 01.171' W	
Alder Creek Lookout			45° 49.036' N 113° 03.298' W	
Alder Creek Lookout			45° 49.772' N 113° 03.225' W	
Alder Creek Repeater	Tower Mountain		45° 24.114' N 113° 53.477' W	
Alder Creek Repeater	Maverick Mountain		45° 26.214' N 113° 08.557' W	
Alder Creek Repeater	Highland Lookout		45° 46.117' N 113° 29.109' W	
Alder Creek Repeater			45° 49.441' N 113° 48.581' W	
Alder Creek Repeater			45° 49.441' N 113° 48.581' W	
Alder Creek Safety Zone	CMD 7		45° 51.900' N 113° 05.228' W	
Alder Creek Unimproved Landing Area			45° 50.160' N 113° 04.501' W	
Alder Creek Unimproved Landing Area			45° 50.021' N 113° 04.602' W	
Alder Creek Unimproved Landing Area			45° 41.040' N 113° 04.083' W	

Flight Restriction Information

Alder Creek - 1/7629- 12,500ft ceiling
Trail Creek - 1/7630 - 11,500ft ceiling
Black Mountain - 1/1730 - 10,500ft ceiling



SA Blue Team
8/13/2021 2013
North American 1983 Datum. LatLong Grid

Fire perimeter updated from
Acres from IR on 08/12/21 21:16

Scale: 1:54,688
1 inch equals 1 mile