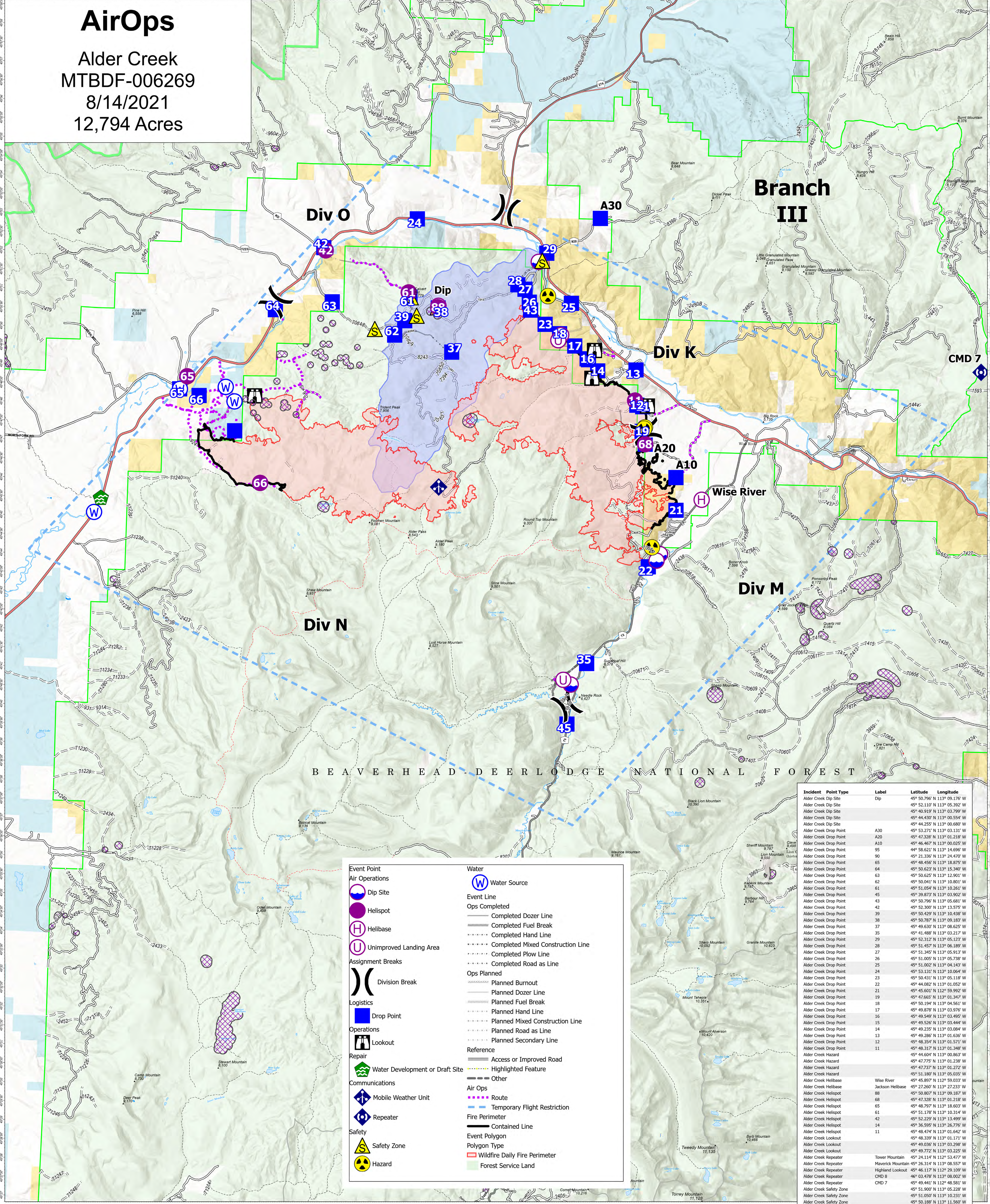


AirOps

Alder Creek
MTBDF-006269
8/14/2021
12,794 Acres



Event Point	Water
Air Operations	Water Source
Dip Site	Water Source
Helispot	Event Line
Helibase	Completed Dozer Line
Unimproved Landing Area	Completed Fuel Break
Assignment Breaks	Completed Hand Line
Division Break	Completed Mixed Construction Line
Logistics	Completed Plow Line
Drop Point	Completed Road as Line
Operations	Ops Planned
Lookout	Planned Burnout
Repair	Planned Dozer Line
Water Development or Draft Site	Planned Fuel Break
Communications	Planned Hand Line
Mobile Weather Unit	Planned Mixed Construction Line
Repeater	Planned Road as Line
Safety	Planned Secondary Line
Safety Zone	Reference
Hazard	Access or Improved Road
	Highlighted Feature
	Other
	Air Ops
	Route
	Temporary Flight Restriction
	Fire Perimeter
	Contained Line
	Event Polygon
	Wildfire Daily Fire Perimeter
	Forest Service Land

Incident	Point Type	Label	Latitude	Longitude
Alder Creek	Dip Site	Dip	45° 50.796' N 113° 09.176' W	
Alder Creek	Dip Site	Dip	45° 52.110' N 113° 05.392' W	
Alder Creek	Dip Site	Dip	45° 40.819' N 113° 03.799' W	
Alder Creek	Dip Site	Dip	45° 44.430' N 113° 00.554' W	
Alder Creek	Dip Site	Dip	45° 44.255' N 113° 00.680' W	
Alder Creek	Drop Point	A30	45° 53.271' N 113° 03.131' W	
Alder Creek	Drop Point	A20	45° 47.328' N 113° 01.218' W	
Alder Creek	Drop Point	A10	45° 46.467' N 113° 00.025' W	
Alder Creek	Drop Point	95	45° 58.621' N 113° 14.696' W	
Alder Creek	Drop Point	90	45° 21.336' N 113° 24.470' W	
Alder Creek	Drop Point	65	45° 48.456' N 113° 18.875' W	
Alder Creek	Drop Point	64	45° 50.623' N 113° 15.340' W	
Alder Creek	Drop Point	63	45° 50.625' N 113° 12.901' W	
Alder Creek	Drop Point	62	45° 50.041' N 113° 10.801' W	
Alder Creek	Drop Point	61	45° 51.054' N 113° 10.261' W	
Alder Creek	Drop Point	45	45° 50.877' N 113° 03.902' W	
Alder Creek	Drop Point	43	45° 50.796' N 113° 05.681' W	
Alder Creek	Drop Point	42	45° 52.300' N 113° 13.575' W	
Alder Creek	Drop Point	39	45° 50.429' N 113° 10.438' W	
Alder Creek	Drop Point	38	45° 50.787' N 113° 09.183' W	
Alder Creek	Drop Point	37	45° 49.630' N 113° 08.625' W	
Alder Creek	Drop Point	35	45° 41.468' N 113° 03.217' W	
Alder Creek	Drop Point	29	45° 52.312' N 113° 05.123' W	
Alder Creek	Drop Point	28	45° 51.457' N 113° 06.189' W	
Alder Creek	Drop Point	27	45° 51.345' N 113° 05.913' W	
Alder Creek	Drop Point	26	45° 51.005' N 113° 05.738' W	
Alder Creek	Drop Point	25	45° 51.002' N 113° 04.143' W	
Alder Creek	Drop Point	24	45° 53.131' N 113° 10.064' W	
Alder Creek	Drop Point	23	45° 50.431' N 113° 05.119' W	
Alder Creek	Drop Point	22	45° 44.082' N 113° 01.052' W	
Alder Creek	Drop Point	21	45° 45.601' N 112° 59.992' W	
Alder Creek	Drop Point	19	45° 47.665' N 113° 01.347' W	
Alder Creek	Drop Point	18	45° 50.194' N 113° 04.561' W	
Alder Creek	Drop Point	17	45° 49.878' N 113° 03.976' W	
Alder Creek	Drop Point	16	45° 49.548' N 113° 03.495' W	
Alder Creek	Drop Point	15	45° 49.536' N 113° 03.444' W	
Alder Creek	Drop Point	14	45° 49.235' N 113° 03.084' W	
Alder Creek	Drop Point	13	45° 49.286' N 113° 01.636' W	
Alder Creek	Drop Point	12	45° 48.354' N 113° 01.571' W	
Alder Creek	Drop Point	11	45° 48.317' N 113° 01.348' W	
Alder Creek	Hazard		45° 44.604' N 113° 00.863' W	
Alder Creek	Hazard		45° 47.775' N 113° 01.238' W	
Alder Creek	Hazard		45° 47.237' N 113° 01.272' W	
Alder Creek	Hazard		45° 51.180' N 113° 05.035' W	
Alder Creek	Helibase	Wise River	45° 45.897' N 112° 59.033' W	
Alder Creek	Helibase	Jackson Helibase	45° 27.260' N 113° 27.233' W	
Alder Creek	Helispot	88	45° 50.807' N 113° 09.187' W	
Alder Creek	Helispot	68	45° 47.328' N 113° 01.218' W	
Alder Creek	Helispot	65	45° 48.797' N 113° 18.603' W	
Alder Creek	Helispot	61	45° 51.178' N 113° 03.144' W	
Alder Creek	Helispot	42	45° 52.229' N 113° 13.499' W	
Alder Creek	Helispot	14	45° 36.595' N 113° 26.776' W	
Alder Creek	Helispot	11	45° 48.474' N 113° 01.642' W	
Alder Creek	Lookout		45° 48.339' N 113° 01.171' W	
Alder Creek	Lookout		45° 49.036' N 113° 03.298' W	
Alder Creek	Lookout		45° 49.772' N 113° 03.225' W	
Alder Creek	Repeater	Tower Mountain	45° 24.114' N 112° 53.477' W	
Alder Creek	Repeater	Maverick Mountain	45° 26.314' N 113° 08.557' W	
Alder Creek	Repeater	Highland Lookout	45° 46.117' N 112° 29.109' W	
Alder Creek	Repeater	CHD 8	46° 03.478' N 113° 08.002' W	
Alder Creek	Repeater	CHD 7	45° 49.441' N 112° 48.581' W	
Alder Creek	Safety Zone		45° 51.900' N 113° 05.228' W	
Alder Creek	Safety Zone		45° 51.050' N 113° 10.231' W	
Alder Creek	Safety Zone		45° 50.188' N 113° 11.560' W	
Alder Creek	Safety Zone		45° 50.568' N 113° 09.991' W	
Alder Creek	Safety Zone		45° 50.813' N 113° 09.201' W	
Alder Creek	Unimproved Landing Area		45° 50.160' N 113° 04.501' W	
Alder Creek	Unimproved Landing Area		45° 50.021' N 113° 04.602' W	
Alder Creek	Unimproved Landing Area		45° 41.040' N 113° 04.083' W	

Flight Restriction Information

Alder Creek - 1/7629 - 12,500ft ceiling
Trail Creek - 1/7630 - 11,500ft ceiling
Black Mountain - 1/1730 - 10,500ft ceiling



Fire perimeter updated from Acres from IR on 08/13/21 21:11

0 1 2 3 4 Miles
Scale: 1:54,688
1 inch equals 1 mile



SA Blue Team
8/14/2021 07:11
North American 1983 Datum. LatLong Grid