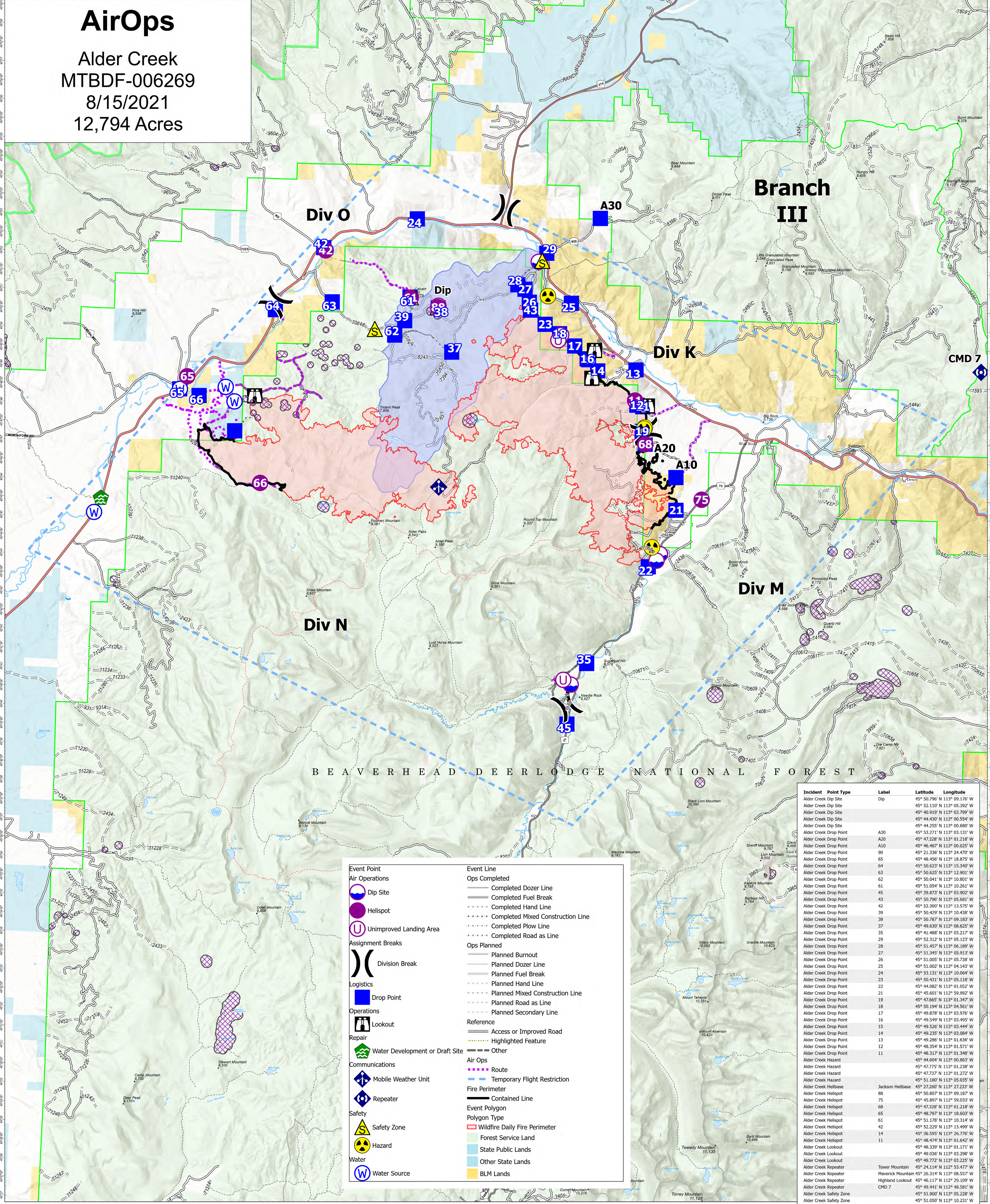


AirOps

Alder Creek
MTBDF-006269
8/15/2021
12,794 Acres



Event Point		Event Line	
	Dip Site		Ops Completed
	Helispot		Completed Dozer Line
	Unimproved Landing Area		Completed Fuel Break
	Division Break		Completed Hand Line
	Drop Point		Completed Mixed Construction Line
	Lookout		Completed Plow Line
	Water Development or Draft Site		Completed Road as Line
	Mobile Weather Unit		Planned Burnout
	Repeater		Planned Dozer Line
	Safety Zone		Planned Fuel Break
	Hazard		Planned Hand Line
	Water Source		Planned Mixed Construction Line
			Planned Road as Line
			Planned Secondary Line
			Access or Improved Road
			Highlighted Feature
			Other
			Air Ops Route
			Temporary Flight Restriction
			Fire Perimeter Contained Line
			Event Polygon
			Wildfire Daily Fire Perimeter
			Forest Service Land
			State Public Lands
			Other State Lands
			BLM Lands

Incident	Point Type	Label	Latitude	Longitude
Alder Creek Dip Site	Dip		45° 50.796' N 113° 09.176' W	
Alder Creek Dip Site	Dip		45° 52.110' N 113° 05.392' W	
Alder Creek Dip Site	Dip		45° 40.919' N 113° 03.799' W	
Alder Creek Dip Site	Dip		45° 44.430' N 113° 00.554' W	
Alder Creek Dip Site	Dip		45° 44.255' N 113° 00.680' W	
Alder Creek Drop Point	A30		45° 53.271' N 113° 03.131' W	
Alder Creek Drop Point	A20		45° 47.328' N 113° 01.218' W	
Alder Creek Drop Point	A10		45° 46.467' N 113° 00.025' W	
Alder Creek Drop Point	90		45° 21.336' N 113° 24.470' W	
Alder Creek Drop Point	65		45° 48.456' N 113° 18.875' W	
Alder Creek Drop Point	64		45° 50.623' N 113° 15.340' W	
Alder Creek Drop Point	63		45° 50.623' N 113° 12.901' W	
Alder Creek Drop Point	62		45° 50.041' N 113° 10.801' W	
Alder Creek Drop Point	61		45° 51.054' N 113° 10.261' W	
Alder Creek Drop Point	45		45° 39.873' N 113° 03.902' W	
Alder Creek Drop Point	43		45° 50.796' N 113° 05.681' W	
Alder Creek Drop Point	42		45° 52.300' N 113° 13.575' W	
Alder Creek Drop Point	39		45° 50.429' N 113° 10.438' W	
Alder Creek Drop Point	38		45° 50.787' N 113° 09.183' W	
Alder Creek Drop Point	37		45° 49.630' N 113° 08.625' W	
Alder Creek Drop Point	35		45° 41.488' N 113° 53.217' W	
Alder Creek Drop Point	29		45° 52.312' N 113° 05.123' W	
Alder Creek Drop Point	28		45° 51.457' N 113° 06.189' W	
Alder Creek Drop Point	27		45° 51.345' N 113° 05.913' W	
Alder Creek Drop Point	26		45° 51.005' N 113° 05.738' W	
Alder Creek Drop Point	25		45° 51.002' N 113° 04.143' W	
Alder Creek Drop Point	24		45° 53.131' N 113° 10.064' W	
Alder Creek Drop Point	23		45° 50.431' N 113° 05.118' W	
Alder Creek Drop Point	22		45° 44.082' N 113° 01.052' W	
Alder Creek Drop Point	21		45° 45.011' N 113° 53.217' W	
Alder Creek Drop Point	19		45° 47.665' N 113° 01.347' W	
Alder Creek Drop Point	18		45° 50.194' N 113° 04.561' W	
Alder Creek Drop Point	17		45° 49.878' N 113° 03.976' W	
Alder Creek Drop Point	16		45° 49.549' N 113° 03.495' W	
Alder Creek Drop Point	15		45° 49.526' N 113° 03.444' W	
Alder Creek Drop Point	14		45° 49.235' N 113° 03.084' W	
Alder Creek Drop Point	13		45° 49.286' N 113° 01.636' W	
Alder Creek Drop Point	12		45° 48.354' N 113° 01.571' W	
Alder Creek Drop Point	11		45° 48.317' N 113° 01.348' W	
Alder Creek Hazard			45° 44.604' N 113° 00.863' W	
Alder Creek Hazard			45° 47.775' N 113° 01.238' W	
Alder Creek Hazard			45° 47.737' N 113° 01.272' W	
Alder Creek Hazard			45° 51.180' N 113° 05.035' W	
Alder Creek Helibase	Jackson Helibase		45° 27.260' N 113° 27.233' W	
Alder Creek Helispot		88	45° 50.807' N 113° 09.187' W	
Alder Creek Helispot		75	45° 45.897' N 113° 59.033' W	
Alder Creek Helispot		68	45° 47.328' N 113° 01.218' W	
Alder Creek Helispot		65	45° 48.797' N 113° 18.603' W	
Alder Creek Helispot		61	45° 51.178' N 113° 10.314' W	
Alder Creek Helispot		42	45° 52.229' N 113° 13.499' W	
Alder Creek Helispot		14	45° 36.995' N 113° 26.776' W	
Alder Creek Helispot		11	45° 48.474' N 113° 01.642' W	
Alder Creek Lookout			45° 48.339' N 113° 01.171' W	
Alder Creek Lookout			45° 49.036' N 113° 03.298' W	
Alder Creek Lookout			45° 49.772' N 113° 03.225' W	
Alder Creek Repeater	Tower Mountain		45° 24.114' N 113° 53.477' W	
Alder Creek Repeater	Maverick Mountain		45° 26.314' N 113° 08.557' W	
Alder Creek Repeater	Highland Lookout		45° 46.117' N 112° 29.109' W	
Alder Creek Repeater	CMD 7		45° 49.441' N 112° 48.581' W	
Alder Creek Safety Zone			45° 51.900' N 113° 05.228' W	
Alder Creek Safety Zone			45° 51.050' N 113° 10.231' W	
Alder Creek Safety Zone			45° 50.188' N 113° 11.560' W	
Alder Creek Safety Zone			45° 50.813' N 113° 09.201' W	
Alder Creek Unimproved Landing Area			45° 50.160' N 113° 04.501' W	
Alder Creek Unimproved Landing Area			45° 50.021' N 113° 04.602' W	
Alder Creek Unimproved Landing Area			45° 41.040' N 113° 04.083' W	

Flight Restriction Information

Alder Creek - 1/7629 - 12,500ft ceiling
Trail Creek - 1/7630 - 11,500ft ceiling
Black Mountain - 1/1730 - 10,500ft ceiling



Fire perimeter updated from
Acres from IR on 08/13/21 21:11

