

AirOps

Trail Creek
MTBDF-006272
8/15/2021
36,788 Acres

Air Operations

- Dip Site
- Helispot
- Sling Site

Assignment Breaks

- Division Break

Logistics

- Drop Point
- Staging Area

Operations

- Lookout

Repair

- Water Development or Draft Site

Communications

- Mobile Weather Unit
- Repeater

Safety

- Safety Zone
- Hazard

Water

- Water Source

Event Line

Ops Completed

- Completed Dozer Line
- Completed Fuel Break
- Completed Hand Line
- Completed Road as Line

Ops Planned

- Planned Fuel Break
- Planned Hand Line
- Planned Road as Line
- Planned Secondary Line

Reference

- Access or Improved Road
- Fence

Repair

- Repair Line
- Road Repair

Safety

- Escape Route

Air Ops

- Retardant Drop
- Temporary Flight Restriction

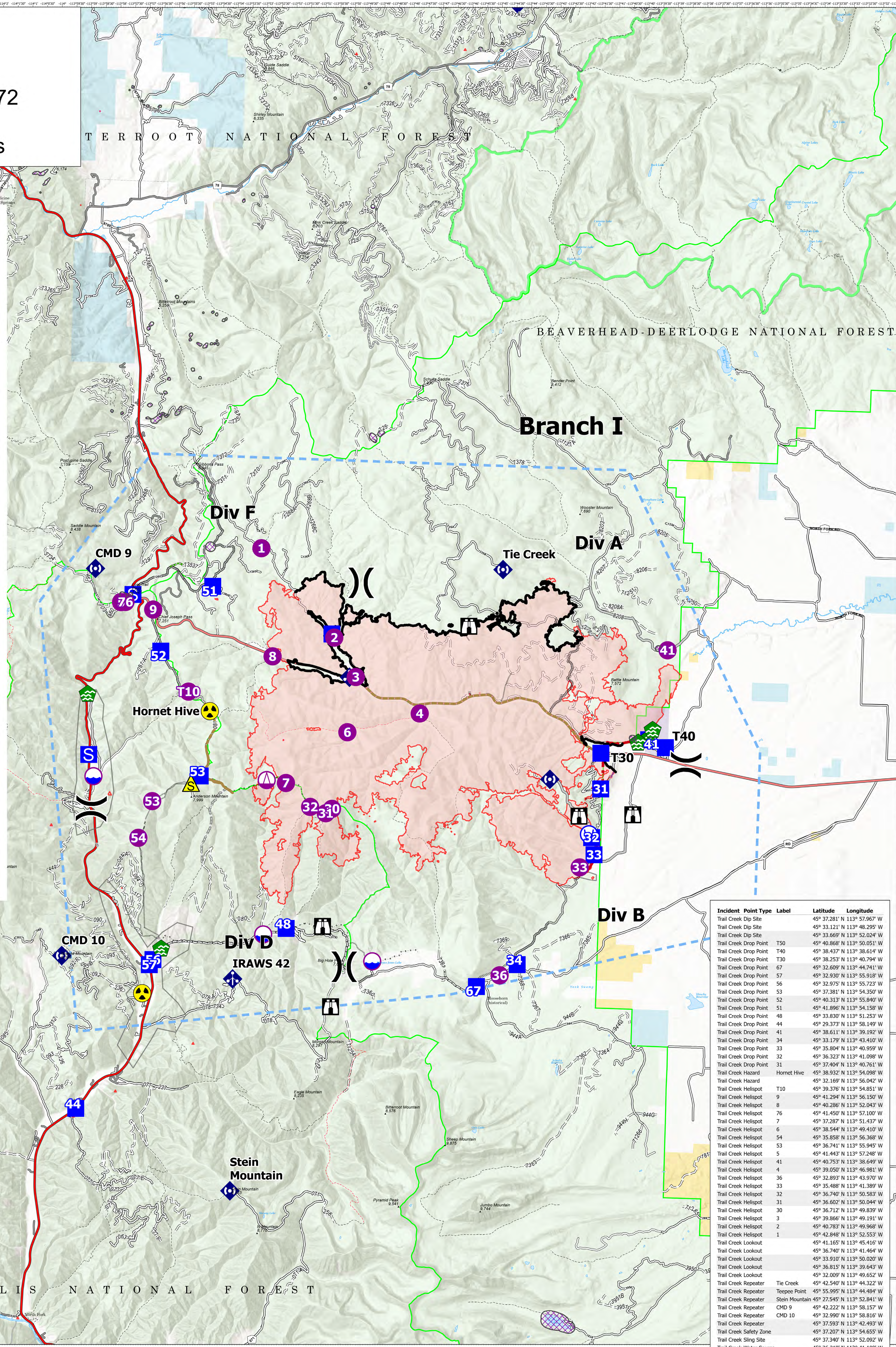
Fire Perimeter

- Contained Line

Event Polygon

Polygon Type

- Other
- Wildfire Daily Fire Perimeter
- Aerial Fire Retardant Avoidance Areas: Terrestrial
- Aerial Suppression Prohibited



| Incident Point Type | Label | Latitude | Longitude |
|--------------------------|----------------|------------------------------|-----------|
| Trail Creek Dip Site | | 45° 37.281' N 113° 57.967' W | |
| Trail Creek Dip Site | | 45° 33.121' N 113° 48.295' W | |
| Trail Creek Dip Site | | 45° 33.669' N 113° 52.024' W | |
| Trail Creek Drop Point | T50 | 45° 40.868' N 113° 50.051' W | |
| Trail Creek Drop Point | T40 | 45° 38.437' N 113° 38.614' W | |
| Trail Creek Drop Point | T30 | 45° 38.253' N 113° 40.794' W | |
| Trail Creek Drop Point | 67 | 45° 32.609' N 113° 44.741' W | |
| Trail Creek Drop Point | 57 | 45° 32.930' N 113° 55.918' W | |
| Trail Creek Drop Point | 56 | 45° 32.975' N 113° 55.723' W | |
| Trail Creek Drop Point | 53 | 45° 37.381' N 113° 54.350' W | |
| Trail Creek Drop Point | 52 | 45° 40.313' N 113° 55.840' W | |
| Trail Creek Drop Point | 51 | 45° 41.896' N 113° 54.158' W | |
| Trail Creek Drop Point | 48 | 45° 33.830' N 113° 51.253' W | |
| Trail Creek Drop Point | 44 | 45° 29.373' N 113° 58.149' W | |
| Trail Creek Drop Point | 41 | 45° 38.611' N 113° 39.192' W | |
| Trail Creek Drop Point | 34 | 45° 33.179' N 113° 43.110' W | |
| Trail Creek Drop Point | 33 | 45° 35.804' N 113° 40.959' W | |
| Trail Creek Drop Point | 32 | 45° 36.323' N 113° 41.098' W | |
| Trail Creek Drop Point | 31 | 45° 37.404' N 113° 40.761' W | |
| Trail Creek Hazard | Hornet Hive | 45° 38.932' N 113° 54.098' W | |
| Trail Creek Hazard | | 45° 32.169' N 113° 56.042' W | |
| Trail Creek Helispot | T10 | 45° 39.376' N 113° 54.851' W | |
| Trail Creek Helispot | 9 | 45° 41.294' N 113° 56.150' W | |
| Trail Creek Helispot | 8 | 45° 40.286' N 113° 52.043' W | |
| Trail Creek Helispot | 76 | 45° 41.450' N 113° 57.100' W | |
| Trail Creek Helispot | 7 | 45° 37.287' N 113° 51.437' W | |
| Trail Creek Helispot | 6 | 45° 38.544' N 113° 49.419' W | |
| Trail Creek Helispot | 53 | 45° 35.858' N 113° 56.368' W | |
| Trail Creek Helispot | 5 | 45° 36.741' N 113° 55.045' W | |
| Trail Creek Helispot | 5 | 45° 41.443' N 113° 57.248' W | |
| Trail Creek Helispot | 41 | 45° 40.753' N 113° 38.649' W | |
| Trail Creek Helispot | 4 | 45° 39.050' N 113° 46.981' W | |
| Trail Creek Helispot | 36 | 45° 32.893' N 113° 43.970' W | |
| Trail Creek Helispot | 33 | 45° 35.488' N 113° 41.389' W | |
| Trail Creek Helispot | 32 | 45° 36.740' N 113° 50.583' W | |
| Trail Creek Helispot | 31 | 45° 36.602' N 113° 50.044' W | |
| Trail Creek Helispot | 30 | 45° 36.712' N 113° 49.839' W | |
| Trail Creek Helispot | 3 | 45° 39.866' N 113° 49.191' W | |
| Trail Creek Helispot | 2 | 45° 40.783' N 113° 49.968' W | |
| Trail Creek Helispot | 1 | 45° 42.848' N 113° 52.553' W | |
| Trail Creek Helispot | | 45° 41.165' N 113° 45.416' W | |
| Trail Creek Lookout | | 45° 36.740' N 113° 41.464' W | |
| Trail Creek Lookout | | 45° 33.910' N 113° 50.020' W | |
| Trail Creek Lookout | | 45° 36.815' N 113° 39.643' W | |
| Trail Creek Lookout | | 45° 32.009' N 113° 49.652' W | |
| Trail Creek Repeater | Tie Creek | 45° 42.540' N 113° 44.322' W | |
| Trail Creek Repeater | Tepee Point | 45° 55.995' N 113° 44.484' W | |
| Trail Creek Repeater | Stein Mountain | 45° 27.545' N 113° 52.841' W | |
| Trail Creek Repeater | CMD 9 | 45° 42.222' N 113° 58.157' W | |
| Trail Creek Repeater | CMD 10 | 45° 32.990' N 113° 58.816' W | |
| Trail Creek Repeater | | 45° 37.593' N 113° 42.493' W | |
| Trail Creek Safety Zone | | 45° 37.207' N 113° 54.655' W | |
| Trail Creek Sling Site | | 45° 37.340' N 113° 52.092' W | |
| Trail Creek Water Source | | 45° 36.319' N 113° 41.108' W | |

Flight Restriction Information

Alder Creek - 1/7629 - 12,500ft ceiling
Trail Creek - 1/7630 - 11,500ft ceiling
Black Mountain - 1/1730 - 10,500ft ceiling



SA Blue Team
8/14/2021 2128
North American 1983 Datum. LatLong Grid

Fire perimeter updated from Acres from IR on 08/13/21 20:54

Scale: 1:54,688

1 inch equals 1 mile