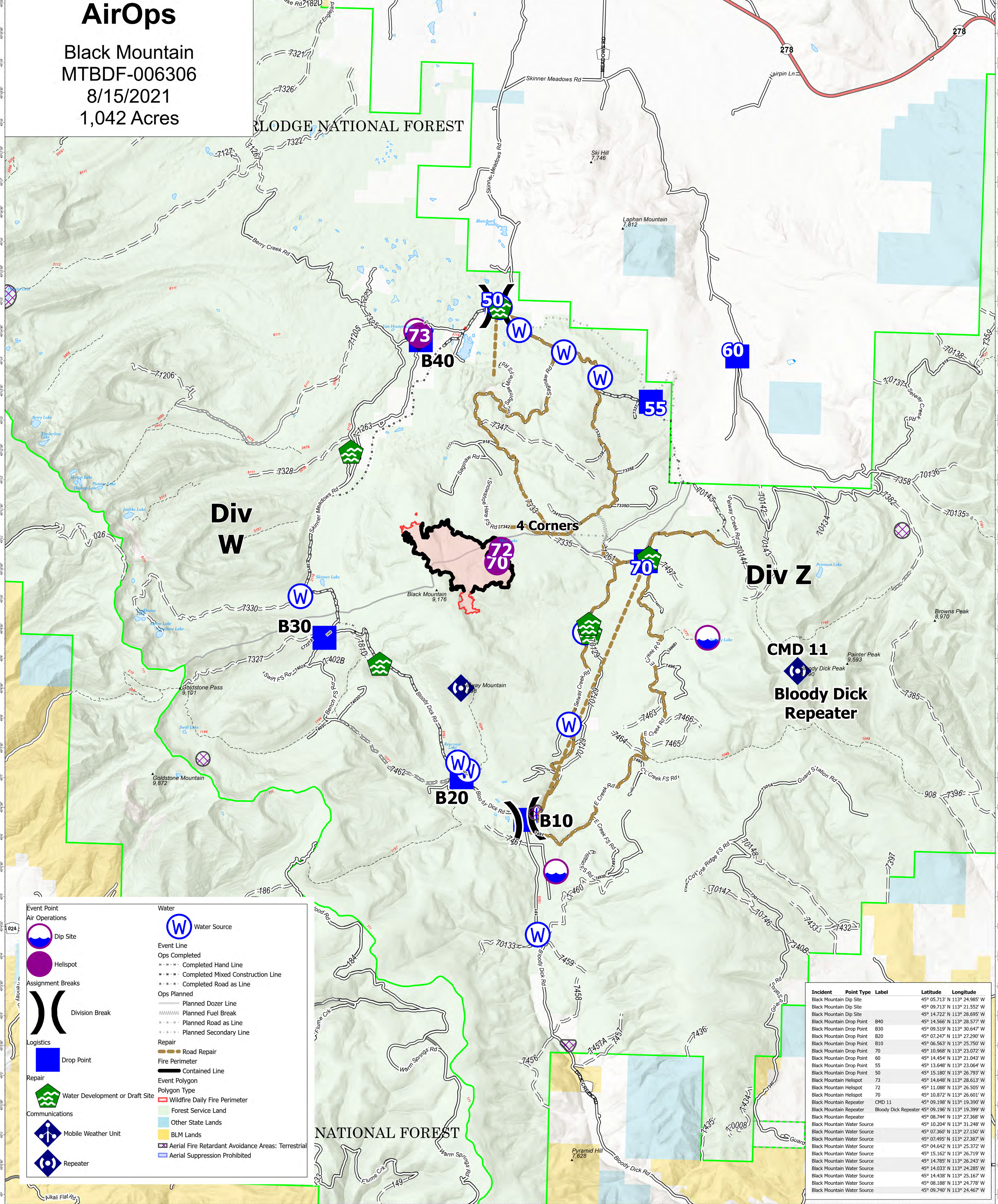


AirOps

Black Mountain
MTBDF-006306
8/15/2021
1,042 Acres

BLUDGE NATIONAL FOREST



Div W

Div Z

CMD 11
Bloody Dick Repeater

NATIONAL FOREST

Dip Site	Water Source
Helispot	Ops Completed
Assignment Breaks	Completed Hand Line
Division Break	Completed Mixed Construction Line
Drop Point	Completed Road as Line
Repair	Ops Planned
Communications	Planned Dozer Line
Mobile Weather Unit	Planned Fuel Break
Repeater	Planned Road as Line
	Planned Secondary Line
	Repair
	Fire Perimeter
	Contained Line
	Event Polygon
	Water Development or Draft Site
	Polygon Type
	Wildfire Daily Fire Perimeter
	Forest Service Land
	Other State Lands
	BLM Lands
	Aerial Fire Retardant Avoidance Areas: Terrestrial
	Aerial Suppression Prohibited

Incident	Point Type	Label	Latitude	Longitude
Black Mountain	Dip Site		45° 05.713' N	113° 24.985' W
Black Mountain	Dip Site		45° 09.713' N	113° 21.552' W
Black Mountain	Dip Site		45° 14.722' N	113° 28.695' W
Black Mountain	Drop Point	B40	45° 14.566' N	113° 28.577' W
Black Mountain	Drop Point	B30	45° 09.519' N	113° 30.647' W
Black Mountain	Drop Point	B20	45° 07.247' N	113° 27.290' W
Black Mountain	Drop Point	B10	45° 06.563' N	113° 25.750' W
Black Mountain	Drop Point	70	45° 10.968' N	113° 23.072' W
Black Mountain	Drop Point	60	45° 14.454' N	113° 21.043' W
Black Mountain	Drop Point	55	45° 13.648' N	113° 23.064' W
Black Mountain	Drop Point	50	45° 15.180' N	113° 26.793' W
Black Mountain	Helispot	73	45° 14.648' N	113° 28.613' W
Black Mountain	Helispot	72	45° 11.088' N	113° 26.505' W
Black Mountain	Helispot	70	45° 10.872' N	113° 26.601' W
Black Mountain	Repeater	Bloody Dick Repeater	45° 09.198' N	113° 19.399' W
Black Mountain	Repeater		45° 09.196' N	113° 19.399' W
Black Mountain	Water Source		45° 08.744' N	113° 27.368' W
Black Mountain	Water Source		45° 10.204' N	113° 21.248' W
Black Mountain	Water Source		45° 07.360' N	113° 27.150' W
Black Mountain	Water Source		45° 07.495' N	113° 27.387' W
Black Mountain	Water Source		45° 15.162' N	113° 26.719' W
Black Mountain	Water Source		45° 14.785' N	113° 26.243' W
Black Mountain	Water Source		45° 14.033' N	113° 24.285' W
Black Mountain	Water Source		45° 14.438' N	113° 25.167' W
Black Mountain	Water Source		45° 08.188' N	113° 24.778' W
Black Mountain	Water Source		45° 09.740' N	113° 24.467' W

Flight Restriction Information
Alder Creek - 1/7629- 12,500ft ceiling
Trail Creek - 1/7630 - 11,500ft ceiling
Black Mountain - 1/1730 - 10,500ft ceiling



SA Blue Team
8/14/2021 2204
North American 1983 Datum, LatLong Grid

Fire perimeter updated from Acres from IR on 08/13/21 21:11

Scale: 1:35,000
1 inch equals 1 miles