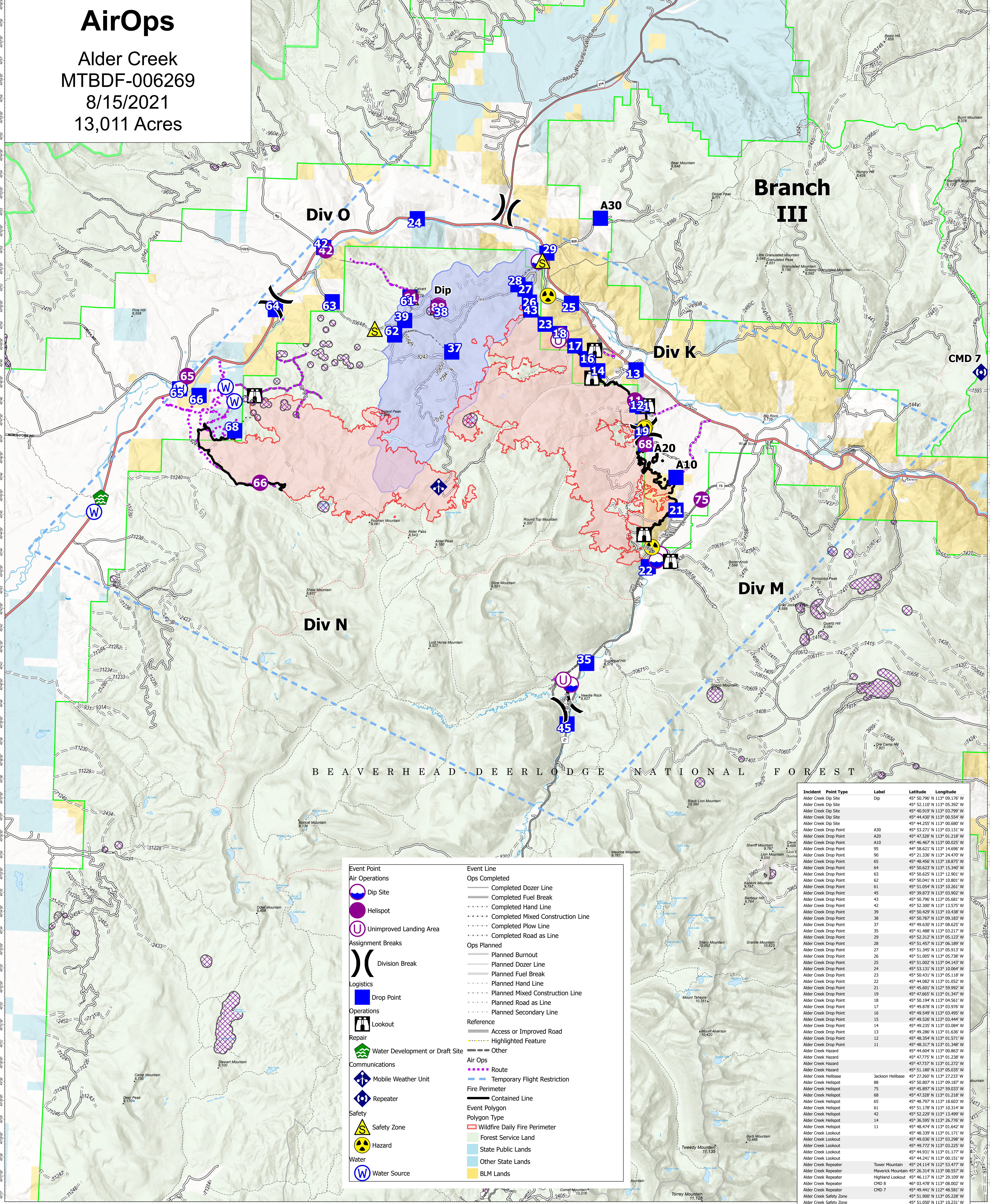


# AirOps

Alder Creek  
MTBDF-006269  
8/15/2021  
13,011 Acres



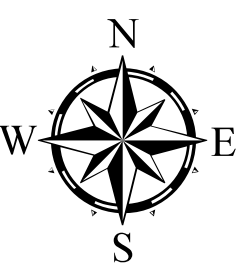
BEAVERHEAD-DEER LODGE NATIONAL FOREST

Event Point	
	Dip Site
	Helispot
	Unimproved Landing Area
Assignment Breaks	
	Division Break
Logistics	
	Drop Point
	Lookout
Operations	
	Water Development or Draft Site
Repair	
	Mobile Weather Unit
	Repeater
Safety	
	Safety Zone
	Hazard
Water	
	Water Source
Event Line	
	Ops Completed
	Completed Dozer Line
	Completed Fuel Break
	Completed Hand Line
	Completed Mixed Construction Line
	Completed Plow Line
	Completed Road as Line
Ops Planned	
	Planned Burnout
	Planned Dozer Line
	Planned Fuel Break
	Planned Hand Line
	Planned Mixed Construction Line
	Planned Road as Line
	Planned Secondary Line
Reference	
	Access or Improved Road
	Highlighted Feature
	Other
Air Ops	
	Route
	Temporary Flight Restriction
Fire Perimeter	
	Contained Line
Event Polygon	
	Wildfire Daily Fire Perimeter
	Forest Service Land
	State Public Lands
	Other State Lands
	BLM Lands

Incident	Point Type	Label	Latitude	Longitude
Alder Creek	Dip Site	Dip	45° 50.796' N	113° 09.176' W
Alder Creek	Dip Site	Dip	45° 52.110' N	113° 05.392' W
Alder Creek	Dip Site	Dip	45° 40.919' N	113° 03.799' W
Alder Creek	Dip Site	Dip	45° 44.430' N	113° 00.554' W
Alder Creek	Dip Site	Dip	45° 44.255' N	113° 00.680' W
Alder Creek	Drop Point	A30	45° 53.271' N	113° 03.131' W
Alder Creek	Drop Point	A20	45° 47.328' N	113° 01.218' W
Alder Creek	Drop Point	A10	45° 46.467' N	113° 00.025' W
Alder Creek	Drop Point	95	45° 58.621' N	113° 14.696' W
Alder Creek	Drop Point	90	45° 21.336' N	113° 24.470' W
Alder Creek	Drop Point	65	45° 48.456' N	113° 18.875' W
Alder Creek	Drop Point	64	45° 50.623' N	113° 15.340' W
Alder Creek	Drop Point	63	45° 50.625' N	113° 12.901' W
Alder Creek	Drop Point	62	45° 50.041' N	113° 10.801' W
Alder Creek	Drop Point	61	45° 51.054' N	113° 10.351' W
Alder Creek	Drop Point	45	45° 39.873' N	113° 03.902' W
Alder Creek	Drop Point	43	45° 50.796' N	113° 05.681' W
Alder Creek	Drop Point	42	45° 52.300' N	113° 13.575' W
Alder Creek	Drop Point	39	45° 50.429' N	113° 10.438' W
Alder Creek	Drop Point	38	45° 50.787' N	113° 09.183' W
Alder Creek	Drop Point	37	45° 49.630' N	113° 08.625' W
Alder Creek	Drop Point	35	45° 41.488' N	113° 03.217' W
Alder Creek	Drop Point	29	45° 52.312' N	113° 05.123' W
Alder Creek	Drop Point	28	45° 51.457' N	113° 06.189' W
Alder Creek	Drop Point	27	45° 51.345' N	113° 05.913' W
Alder Creek	Drop Point	26	45° 51.005' N	113° 05.738' W
Alder Creek	Drop Point	25	45° 51.002' N	113° 04.143' W
Alder Creek	Drop Point	24	45° 53.131' N	113° 10.064' W
Alder Creek	Drop Point	23	45° 50.431' N	113° 05.118' W
Alder Creek	Drop Point	22	45° 44.082' N	113° 01.052' W
Alder Creek	Drop Point	21	45° 45.601' N	113° 05.992' W
Alder Creek	Drop Point	19	45° 47.665' N	113° 01.347' W
Alder Creek	Drop Point	18	45° 50.194' N	113° 04.561' W
Alder Creek	Drop Point	17	45° 49.878' N	113° 03.976' W
Alder Creek	Drop Point	16	45° 49.549' N	113° 03.495' W
Alder Creek	Drop Point	15	45° 49.526' N	113° 03.444' W
Alder Creek	Drop Point	14	45° 49.235' N	113° 03.084' W
Alder Creek	Drop Point	13	45° 49.286' N	113° 01.636' W
Alder Creek	Drop Point	12	45° 48.354' N	113° 01.571' W
Alder Creek	Drop Point	11	45° 48.317' N	113° 01.348' W
Alder Creek	Hazard		45° 44.604' N	113° 00.863' W
Alder Creek	Hazard		45° 47.775' N	113° 01.238' W
Alder Creek	Hazard		45° 47.737' N	113° 01.272' W
Alder Creek	Hazard		45° 51.180' N	113° 05.035' W
Alder Creek	Helispot	Jackson Helibase	45° 27.260' N	113° 22.233' W
Alder Creek	Helispot	88	45° 50.807' N	113° 09.187' W
Alder Creek	Helispot	75	45° 45.897' N	113° 09.033' W
Alder Creek	Helispot	68	45° 47.328' N	113° 01.218' W
Alder Creek	Helispot	65	45° 48.797' N	113° 18.603' W
Alder Creek	Helispot	61	45° 51.178' N	113° 10.314' W
Alder Creek	Helispot	42	45° 52.229' N	113° 13.499' W
Alder Creek	Helispot	14	45° 36.595' N	113° 26.776' W
Alder Creek	Helispot	11	45° 48.474' N	113° 01.642' W
Alder Creek	Lookout		45° 48.339' N	113° 01.171' W
Alder Creek	Lookout		45° 49.036' N	113° 03.298' W
Alder Creek	Lookout		45° 49.772' N	113° 03.225' W
Alder Creek	Lookout		45° 44.931' N	113° 01.177' W
Alder Creek	Lookout		45° 44.241' N	113° 00.151' W
Alder Creek	Repeater	Tower Mountain	45° 24.114' N	112° 53.477' W
Alder Creek	Repeater	Maverick Mountain	45° 26.314' N	113° 08.557' W
Alder Creek	Repeater	Highland Lookout	45° 46.117' N	113° 29.109' W
Alder Creek	Repeater	8	46° 03.478' N	113° 08.002' W
Alder Creek	Repeater	CMD 8	45° 49.411' N	113° 08.581' W
Alder Creek	Safety Zone	CMD 7	45° 51.900' N	113° 05.228' W
Alder Creek	Safety Zone		45° 51.050' N	113° 10.231' W
Alder Creek	Safety Zone		45° 50.188' N	113° 11.560' W
Alder Creek	Safety Zone		45° 50.813' N	113° 09.201' W
Alder Creek	Unimproved Landing Area		45° 50.160' N	113° 04.501' W
Alder Creek	Unimproved Landing Area		45° 50.021' N	113° 04.602' W
Alder Creek	Unimproved Landing Area		45° 41.040' N	113° 04.083' W

### Flight Restriction Information

Alder Creek - 1/7629 - 12,500ft ceiling  
Trail Creek - 1/7630 - 11,500ft ceiling  
Black Mountain - 1/1730 - 10,500ft ceiling



Fire perimeter updated from Acres from IR on 08/15/21 00:40

