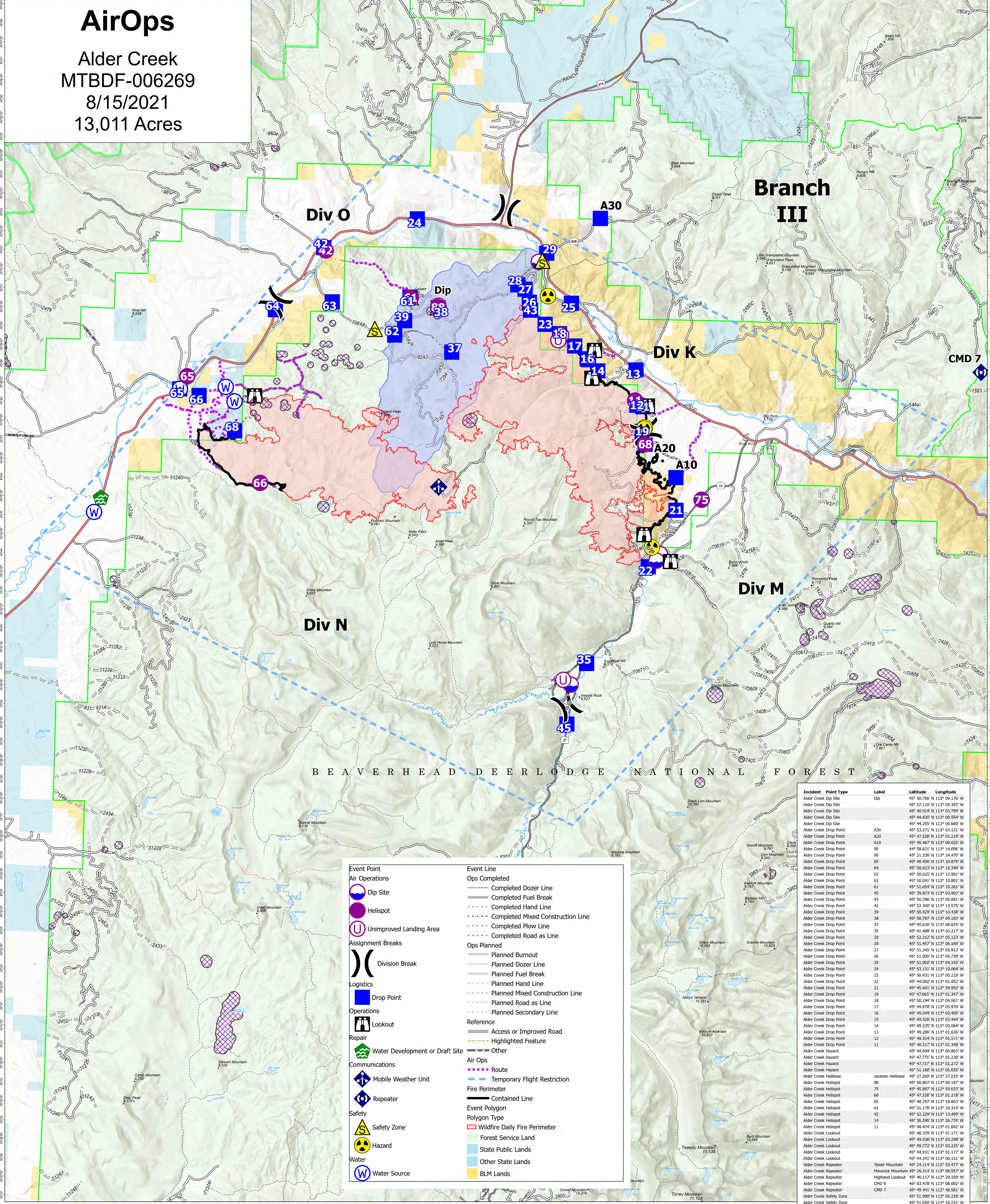


AirOps

Alder Creek
MTBDF-006269
8/15/2021
13,011 Acres



BEAVERHEAD-DEER LODGE NATIONAL FOREST

Event Point		Event Line	
	Dip Site		Ops Completed
	Helispot		Completed Dozer Line
	Unimproved Landing Area		Completed Fuel Break
	Division Break		Completed Hand Line
	Drop Point		Completed Mixed Construction Line
	Lookout		Completed Plow Line
	Water Development or Draft Site		Completed Road as Line
	Mobile Weather Unit		Planned Burnout
	Repeater		Planned Dozer Line
	Safety Zone		Planned Fuel Break
	Hazard		Planned Hand Line
	Water Source		Planned Mixed Construction Line
			Planned Road as Line
			Planned Secondary Line
			Access or Improved Road
			Highlighted Feature
			Other
			Air Ops Route
			Temporary Flight Restriction
			Fire Perimeter Contained Line
			Wildfire Daily Fire Perimeter
			Forest Service Land
			State Public Lands
			Other State Lands
			BLM Lands

Incident	Point Type	Label	Latitude	Longitude
Alder Creek	Dip Site	Dip	49° 50.796' N	113° 09.176' W
Alder Creek	Dip Site	Dip	49° 52.110' N	113° 05.392' W
Alder Creek	Dip Site	Dip	49° 40.919' N	113° 03.799' W
Alder Creek	Dip Site	Dip	49° 44.430' N	113° 00.554' W
Alder Creek	Dip Site	Dip	49° 44.255' N	113° 00.680' W
Alder Creek	Drop Point	A30	49° 53.271' N	113° 03.131' W
Alder Creek	Drop Point	A20	49° 47.328' N	113° 01.218' W
Alder Creek	Drop Point	A10	49° 46.467' N	113° 00.025' W
Alder Creek	Drop Point	95	49° 58.621' N	113° 14.696' W
Alder Creek	Drop Point	90	49° 21.336' N	113° 24.470' W
Alder Creek	Drop Point	65	49° 48.456' N	113° 18.875' W
Alder Creek	Drop Point	64	49° 50.623' N	113° 15.340' W
Alder Creek	Drop Point	63	49° 50.625' N	113° 12.901' W
Alder Creek	Drop Point	62	49° 50.041' N	113° 10.801' W
Alder Creek	Drop Point	61	49° 49.630' N	113° 08.825' W
Alder Creek	Drop Point	45	49° 39.873' N	113° 03.902' W
Alder Creek	Drop Point	43	49° 50.796' N	113° 05.681' W
Alder Creek	Drop Point	42	49° 52.300' N	113° 13.575' W
Alder Creek	Drop Point	39	49° 50.429' N	113° 10.438' W
Alder Creek	Drop Point	38	49° 50.787' N	113° 09.183' W
Alder Creek	Drop Point	37	49° 49.878' N	113° 03.976' W
Alder Creek	Drop Point	35	49° 41.488' N	113° 03.217' W
Alder Creek	Drop Point	29	49° 52.312' N	113° 05.123' W
Alder Creek	Drop Point	28	49° 51.457' N	113° 06.189' W
Alder Creek	Drop Point	27	49° 51.345' N	113° 05.913' W
Alder Creek	Drop Point	26	49° 51.005' N	113° 05.738' W
Alder Creek	Drop Point	25	49° 51.002' N	113° 04.143' W
Alder Creek	Drop Point	24	49° 53.131' N	113° 10.064' W
Alder Creek	Drop Point	23	49° 50.431' N	113° 05.118' W
Alder Creek	Drop Point	22	49° 44.082' N	113° 01.052' W
Alder Creek	Drop Point	21	49° 45.601' N	113° 05.992' W
Alder Creek	Drop Point	19	49° 47.665' N	113° 01.347' W
Alder Creek	Drop Point	18	49° 50.194' N	113° 04.561' W
Alder Creek	Drop Point	17	49° 49.878' N	113° 03.976' W
Alder Creek	Drop Point	16	49° 49.549' N	113° 03.495' W
Alder Creek	Drop Point	15	49° 49.526' N	113° 03.444' W
Alder Creek	Drop Point	14	49° 49.235' N	113° 03.084' W
Alder Creek	Drop Point	13	49° 49.286' N	113° 01.936' W
Alder Creek	Drop Point	12	49° 48.354' N	113° 01.571' W
Alder Creek	Drop Point	11	49° 48.317' N	113° 01.348' W
Alder Creek	Hazard	Alder Creek Hazard	49° 44.604' N	113° 00.863' W
Alder Creek	Hazard	Alder Creek Hazard	49° 47.775' N	113° 01.238' W
Alder Creek	Hazard	Alder Creek Hazard	49° 47.737' N	113° 01.272' W
Alder Creek	Hazard	Alder Creek Hazard	49° 51.180' N	113° 05.035' W
Alder Creek	Helibase	Jackson Helibase	49° 27.260' N	113° 27.233' W
Alder Creek	Helispot	88	49° 50.807' N	113° 09.187' W
Alder Creek	Helispot	75	49° 45.897' N	113° 05.933' W
Alder Creek	Helispot	68	49° 47.328' N	113° 01.218' W
Alder Creek	Helispot	65	49° 48.797' N	113° 18.603' W
Alder Creek	Helispot	61	49° 51.178' N	113° 10.314' W
Alder Creek	Helispot	42	49° 52.229' N	113° 13.499' W
Alder Creek	Helispot	14	49° 36.595' N	113° 26.776' W
Alder Creek	Helispot	11	49° 48.474' N	113° 01.642' W
Alder Creek	Lookout	Alder Creek Lookout	49° 48.339' N	113° 01.171' W
Alder Creek	Lookout	Alder Creek Lookout	49° 49.036' N	113° 03.298' W
Alder Creek	Lookout	Alder Creek Lookout	49° 49.772' N	113° 03.225' W
Alder Creek	Lookout	Alder Creek Lookout	49° 44.931' N	113° 01.177' W
Alder Creek	Lookout	Alder Creek Lookout	49° 44.241' N	113° 00.151' W
Alder Creek	Repeater	Tower Mountain	49° 24.114' N	112° 53.477' W
Alder Creek	Repeater	Maverick Mountain	49° 26.314' N	113° 08.557' W
Alder Creek	Repeater	Highland Lookout	49° 46.117' N	112° 29.109' W
Alder Creek	Repeater	Alder Creek Repeater	49° 40.478' N	113° 08.002' W
Alder Creek	Repeater	Alder Creek Repeater	49° 49.141' N	113° 08.581' W
Alder Creek	Safety Zone	CMD 8	49° 51.800' N	113° 05.228' W
Alder Creek	Safety Zone	Alder Creek Safety Zone	49° 51.050' N	113° 10.231' W
Alder Creek	Safety Zone	Alder Creek Safety Zone	49° 50.188' N	113° 11.560' W
Alder Creek	Safety Zone	Alder Creek Safety Zone	49° 50.813' N	113° 09.201' W
Alder Creek	Unimproved Landing Area	Alder Creek Unimproved Landing Area	49° 50.160' N	113° 04.501' W
Alder Creek	Unimproved Landing Area	Alder Creek Unimproved Landing Area	49° 50.021' N	113° 04.602' W
Alder Creek	Unimproved Landing Area	Alder Creek Unimproved Landing Area	49° 41.040' N	113° 04.083' W

Flight Restriction Information

Alder Creek - 1/7629 - 12,500ft ceiling
Trail Creek - 1/7630 - 11,500ft ceiling
Black Mountain - 1/1730 - 10,500ft ceiling



Fire perimeter updated from Acres from IR on 08/15/21 00:40

