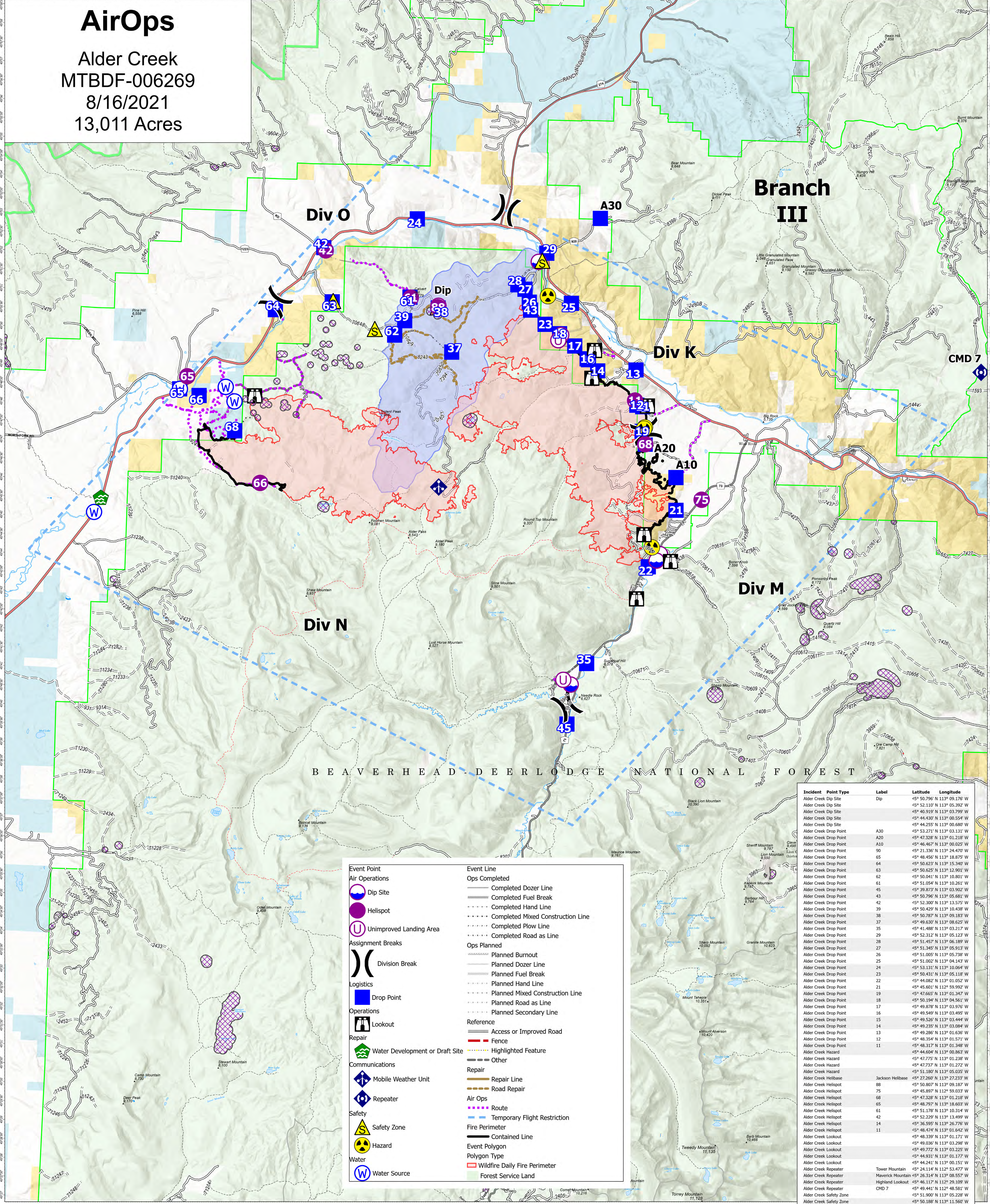


AirOps

Alder Creek
MTBDF-006269
8/16/2021
13,011 Acres



Event Point		Event Line	
	Dip Site		Completed Dozer Line
	Helispot		Completed Fuel Break
	Unimproved Landing Area		Completed Hand Line
	Division Break		Completed Mixed Construction Line
	Drop Point		Completed Plow Line
	Lookout		Completed Road as Line
	Water Development or Draft Site		Planned Burnout
	Mobile Weather Unit		Planned Dozer Line
	Repeater		Planned Fuel Break
	Safety Zone		Planned Hand Line
	Hazard		Planned Mixed Construction Line
	Water Source		Planned Road as Line
			Planned Secondary Line
			Access or Improved Road
			Fence
			Highlighted Feature
			Other
			Repair Line
			Road Repair
			Route
			Temporary Flight Restriction
			Fire Perimeter
			Contained Line
			Wildfire Daily Fire Perimeter
			Forest Service Land

Incident	Point Type	Label	Latitude	Longitude
Alder Creek	Dip Site	Dip	45° 50.796' N 113° 09.176' W	
Alder Creek	Dip Site	Dip	45° 52.110' N 113° 05.392' W	
Alder Creek	Dip Site	Dip	45° 46.919' N 113° 03.799' W	
Alder Creek	Dip Site	Dip	45° 44.430' N 113° 00.554' W	
Alder Creek	Dip Site	Dip	45° 44.255' N 113° 00.680' W	
Alder Creek	Drop Point	A30	45° 53.271' N 113° 03.131' W	
Alder Creek	Drop Point	A20	45° 47.328' N 113° 01.218' W	
Alder Creek	Drop Point	A10	45° 46.467' N 113° 00.025' W	
Alder Creek	Drop Point	90	45° 21.336' N 113° 24.470' W	
Alder Creek	Drop Point	90	45° 48.495' N 113° 05.875' W	
Alder Creek	Drop Point	64	45° 50.623' N 113° 05.340' W	
Alder Creek	Drop Point	63	45° 50.625' N 113° 12.901' W	
Alder Creek	Drop Point	62	45° 50.041' N 113° 10.801' W	
Alder Creek	Drop Point	61	45° 51.054' N 113° 10.261' W	
Alder Creek	Drop Point	45	45° 39.873' N 113° 03.902' W	
Alder Creek	Drop Point	43	45° 50.796' N 113° 05.681' W	
Alder Creek	Drop Point	42	45° 48.205' N 113° 05.913' W	
Alder Creek	Drop Point	39	45° 50.439' N 113° 10.438' W	
Alder Creek	Drop Point	38	45° 50.787' N 113° 09.183' W	
Alder Creek	Drop Point	37	45° 49.630' N 113° 08.625' W	
Alder Creek	Drop Point	35	45° 41.488' N 113° 03.217' W	
Alder Creek	Drop Point	29	45° 52.312' N 113° 05.123' W	
Alder Creek	Drop Point	28	45° 51.457' N 113° 06.189' W	
Alder Creek	Drop Point	27	45° 50.957' N 113° 06.913' W	
Alder Creek	Drop Point	25	45° 51.005' N 113° 05.799' W	
Alder Creek	Drop Point	24	45° 51.002' N 113° 04.143' W	
Alder Creek	Drop Point	23	45° 53.131' N 113° 10.064' W	
Alder Creek	Drop Point	22	45° 50.431' N 113° 05.118' W	
Alder Creek	Drop Point	21	45° 44.082' N 113° 01.052' W	
Alder Creek	Drop Point	19	45° 45.601' N 113° 05.992' W	
Alder Creek	Drop Point	18	45° 46.765' N 113° 01.191' W	
Alder Creek	Drop Point	17	45° 50.194' N 113° 04.561' W	
Alder Creek	Drop Point	16	45° 49.878' N 113° 03.976' W	
Alder Creek	Drop Point	15	45° 49.549' N 113° 03.495' W	
Alder Creek	Drop Point	14	45° 49.235' N 113° 03.084' W	
Alder Creek	Drop Point	13	45° 49.286' N 113° 01.636' W	
Alder Creek	Drop Point	12	45° 48.394' N 113° 01.571' W	
Alder Creek	Hazard	11	45° 46.317' N 113° 04.348' W	
Alder Creek	Hazard	11	45° 44.604' N 113° 00.863' W	
Alder Creek	Hazard	11	45° 47.775' N 113° 01.238' W	
Alder Creek	Hazard	11	45° 47.737' N 113° 01.272' W	
Alder Creek	Hazard	11	45° 51.180' N 113° 05.035' W	
Alder Creek	Helibase	Jackson Helibase	45° 27.260' N 113° 27.233' W	
Alder Creek	Helispot	88	45° 50.807' N 113° 09.187' W	
Alder Creek	Helispot	75	45° 46.907' N 113° 05.033' W	
Alder Creek	Helispot	68	45° 47.328' N 113° 01.218' W	
Alder Creek	Helispot	65	45° 48.797' N 113° 18.603' W	
Alder Creek	Helispot	61	45° 51.178' N 113° 01.314' W	
Alder Creek	Helispot	42	45° 52.229' N 113° 13.499' W	
Alder Creek	Helispot	14	45° 36.595' N 113° 26.776' W	
Alder Creek	Helispot	11	45° 48.474' N 113° 01.642' W	
Alder Creek	Lookout	Alder Creek Lookout	45° 48.339' N 113° 01.171' W	
Alder Creek	Lookout	Alder Creek Lookout	45° 49.036' N 113° 03.296' W	
Alder Creek	Lookout	Alder Creek Lookout	45° 49.772' N 113° 03.225' W	
Alder Creek	Lookout	Alder Creek Lookout	45° 44.931' N 113° 01.177' W	
Alder Creek	Lookout	Alder Creek Lookout	45° 44.241' N 113° 00.151' W	
Alder Creek	Repeater	Alder Creek Repeater	45° 24.114' N 113° 53.477' W	
Alder Creek	Repeater	Maverick Mountain	45° 26.314' N 113° 08.557' W	
Alder Creek	Repeater	Highland Lookout	45° 46.117' N 113° 04.602' W	
Alder Creek	Repeater	Alder Creek Repeater	45° 49.441' N 113° 48.581' W	
Alder Creek	Safety Zone	CMD 7	45° 51.900' N 113° 05.228' W	
Alder Creek	Safety Zone	Alder Creek Safety Zone	45° 50.188' N 113° 11.560' W	
Alder Creek	Safety Zone	Alder Creek Safety Zone	45° 50.813' N 113° 09.201' W	
Alder Creek	Safety Zone	Alder Creek Safety Zone	45° 50.897' N 113° 13.164' W	
Alder Creek	Unimproved Landing Area	Alder Creek Unimproved Landing Area	45° 50.160' N 113° 04.501' W	
Alder Creek	Unimproved Landing Area	Alder Creek Unimproved Landing Area	45° 50.021' N 113° 04.602' W	
Alder Creek	Unimproved Landing Area	Alder Creek Unimproved Landing Area	45° 41.040' N 113° 04.683' W	

Flight Restriction Information

Alder Creek - 1/7629 - 12,500ft ceiling
Trail Creek - 1/7630 - 11,500ft ceiling
Black Mountain - 1/1730 - 10,500ft ceiling



Fire perimeter updated from
Acres from IR on 08/15/21 00:40

