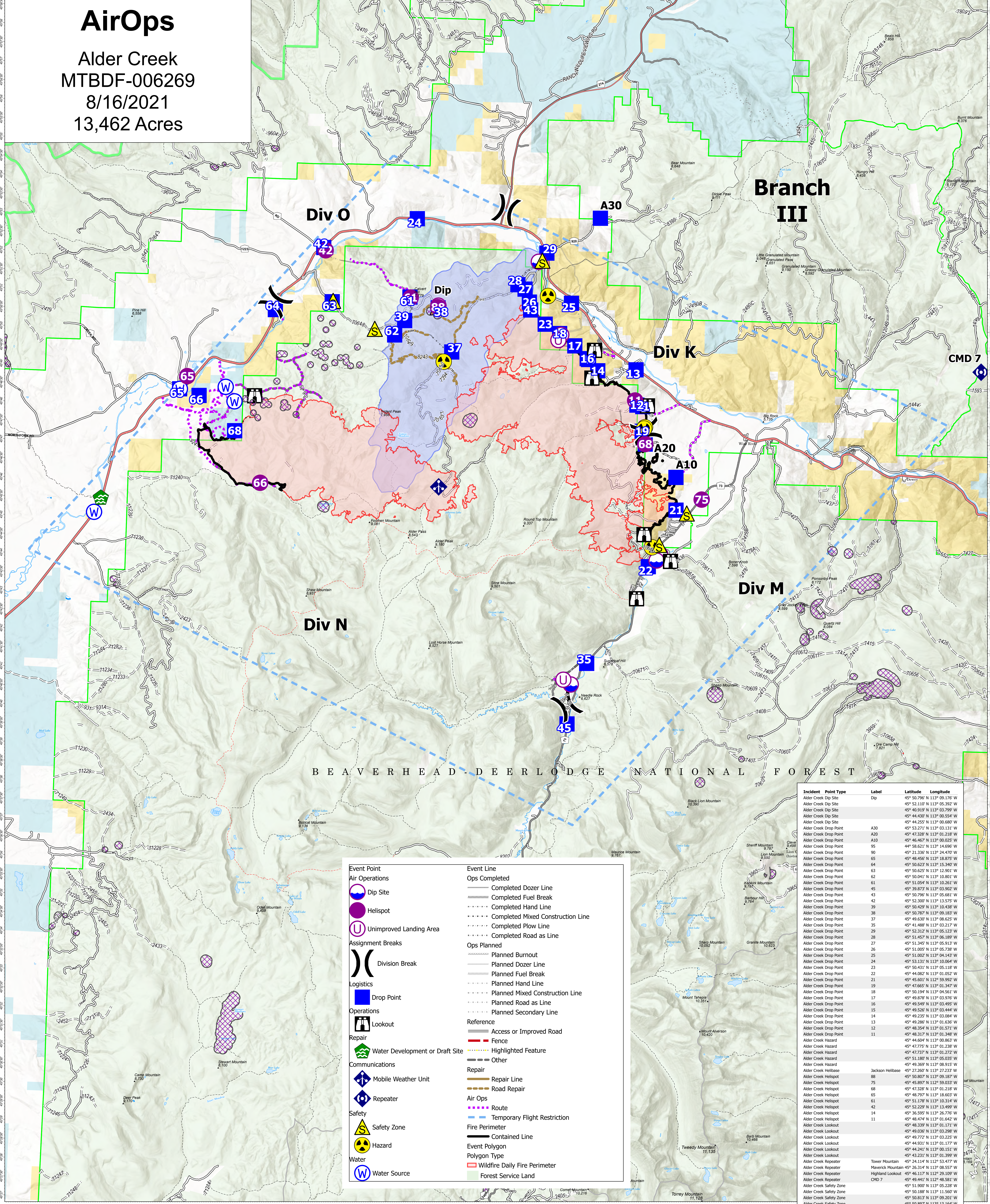


# AirOps

Alder Creek  
MTBDF-006269  
8/16/2021  
13,462 Acres



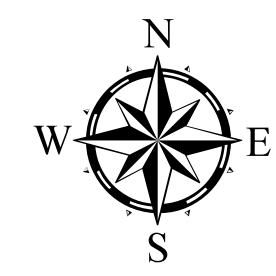
BEAVERHEAD-DEER LODGE NATIONAL FOREST

Event Point		Event Line	
	Dip Site		Completed Dozer Line
	Helispot		Completed Fuel Break
	Unimproved Landing Area		Completed Hand Line
	Division Break		Completed Mixed Construction Line
	Drop Point		Completed Plow Line
	Lookout		Completed Road as Line
	Water Development or Draft Site		Planned Burnout
	Mobile Weather Unit		Planned Dozer Line
	Repeater		Planned Fuel Break
	Safety Zone		Planned Hand Line
	Hazard		Planned Mixed Construction Line
	Water Source		Planned Road as Line
			Planned Secondary Line
			Access or Improved Road
			Fence
			Highlighted Feature
			Other
			Repair Line
			Road Repair
			Route
			Temporary Flight Restriction
			Fire Perimeter
			Contained Line
			Event Polygon
			Wildfire Daily Fire Perimeter
			Forest Service Land

Incident	Point Type	Label	Latitude	Longitude
Alder Creek	Dip Site	Dip	45° 50.796' N	113° 09.176' W
Alder Creek	Dip Site	A30	45° 52.110' N	113° 05.302' W
Alder Creek	Dip Site	A20	45° 40.919' N	113° 03.799' W
Alder Creek	Dip Site	A10	45° 44.430' N	113° 00.554' W
Alder Creek	Dip Site	95	45° 44.255' N	113° 00.680' W
Alder Creek	Drop Point	90	45° 53.271' N	113° 03.131' W
Alder Creek	Drop Point	64	45° 47.328' N	113° 01.218' W
Alder Creek	Drop Point	A30	45° 46.467' N	113° 00.025' W
Alder Creek	Drop Point	95	44° 58.621' N	113° 14.696' W
Alder Creek	Drop Point	90	45° 21.336' N	113° 24.470' W
Alder Creek	Drop Point	63	45° 48.456' N	113° 18.875' W
Alder Creek	Drop Point	64	45° 50.622' N	113° 15.340' W
Alder Creek	Drop Point	65	45° 50.625' N	113° 12.901' W
Alder Creek	Drop Point	62	45° 50.041' N	113° 10.801' W
Alder Creek	Drop Point	61	45° 51.054' N	113° 10.261' W
Alder Creek	Drop Point	42	45° 39.873' N	113° 03.902' W
Alder Creek	Drop Point	43	45° 50.726' N	113° 05.681' W
Alder Creek	Drop Point	44	45° 46.468' N	113° 01.217' W
Alder Creek	Drop Point	45	45° 52.300' N	113° 13.575' W
Alder Creek	Drop Point	39	45° 50.429' N	113° 10.438' W
Alder Creek	Drop Point	38	45° 50.787' N	113° 09.183' W
Alder Creek	Drop Point	37	45° 49.630' N	113° 08.625' W
Alder Creek	Drop Point	35	45° 51.022' N	113° 03.217' W
Alder Creek	Drop Point	29	45° 52.312' N	113° 05.123' W
Alder Creek	Drop Point	28	45° 51.457' N	113° 06.189' W
Alder Creek	Drop Point	27	45° 51.345' N	113° 05.913' W
Alder Creek	Drop Point	26	45° 51.005' N	113° 05.738' W
Alder Creek	Drop Point	25	45° 50.726' N	113° 05.681' W
Alder Creek	Drop Point	24	45° 53.131' N	113° 01.064' W
Alder Creek	Drop Point	23	45° 50.431' N	113° 05.118' W
Alder Creek	Drop Point	22	45° 44.082' N	113° 01.052' W
Alder Creek	Drop Point	21	45° 45.601' N	113° 09.992' W
Alder Creek	Drop Point	19	45° 47.665' N	113° 01.347' W
Alder Creek	Drop Point	18	45° 50.194' N	113° 04.561' W
Alder Creek	Drop Point	17	45° 49.878' N	113° 03.976' W
Alder Creek	Drop Point	16	45° 49.549' N	113° 03.495' W
Alder Creek	Drop Point	15	45° 49.526' N	113° 03.444' W
Alder Creek	Drop Point	14	45° 49.235' N	113° 03.084' W
Alder Creek	Drop Point	13	45° 48.286' N	113° 01.636' W
Alder Creek	Drop Point	12	45° 48.354' N	113° 01.571' W
Alder Creek	Drop Point	11	45° 48.317' N	113° 01.348' W
Alder Creek	Hazard		45° 44.604' N	113° 00.863' W
Alder Creek	Hazard		45° 47.775' N	113° 01.238' W
Alder Creek	Hazard		45° 47.723' N	113° 01.272' W
Alder Creek	Hazard		45° 51.180' N	113° 05.035' W
Alder Creek	Hazard		45° 49.369' N	113° 08.915' W
Alder Creek	Helibase	Jackson Helibase	45° 27.260' N	113° 27.233' W
Alder Creek	Helispot		45° 50.807' N	113° 09.033' W
Alder Creek	Helispot		45° 48.797' N	113° 18.603' W
Alder Creek	Helispot		45° 51.178' N	113° 10.314' W
Alder Creek	Helispot		45° 52.229' N	113° 13.499' W
Alder Creek	Helispot		45° 48.286' N	113° 01.636' W
Alder Creek	Helispot		45° 48.474' N	113° 01.642' W
Alder Creek	Lookout		45° 48.339' N	113° 01.171' W
Alder Creek	Lookout		45° 49.036' N	113° 03.298' W
Alder Creek	Lookout		45° 49.772' N	113° 03.225' W
Alder Creek	Lookout		45° 44.931' N	113° 01.177' W
Alder Creek	Lookout		45° 44.241' N	113° 00.151' W
Alder Creek	Lookout		45° 43.231' N	113° 01.399' W
Alder Creek	Repeater	Tower Mountain	45° 24.114' N	113° 53.477' W
Alder Creek	Repeater	Maverick Mountain	45° 26.314' N	113° 08.137' W
Alder Creek	Repeater	Highland Lookout	45° 46.117' N	113° 29.109' W
Alder Creek	Repeater	CMD 7	45° 49.441' N	112° 48.581' W
Alder Creek	Safety Zone		45° 51.900' N	113° 05.228' W
Alder Creek	Safety Zone		45° 50.188' N	113° 11.560' W
Alder Creek	Safety Zone		45° 50.813' N	113° 09.201' W
Alder Creek	Safety Zone		45° 50.897' N	113° 13.164' W
Alder Creek	Safety Zone		45° 44.671' N	113° 00.592' W
Alder Creek	Safety Zone		45° 45.519' N	113° 59.583' W
Alder Creek	Unimproved Landing Area		45° 50.160' N	113° 04.501' W
Alder Creek	Unimproved Landing Area		45° 50.021' N	113° 04.602' W
Alder Creek	Unimproved Landing Area		45° 41.040' N	113° 04.083' W

### Flight Restriction Information

Alder Creek - 1/7629 - 12,500ft ceiling  
Trail Creek - 1/7630 - 11,500ft ceiling  
Black Mountain - 1/1730 - 10,500ft ceiling



Fire perimeter updated from  
Acres from IR on 08/16/21 00:32

0 1 2 3 4 Miles  
1 inch equals 1 mile Scale: 1:54,688

