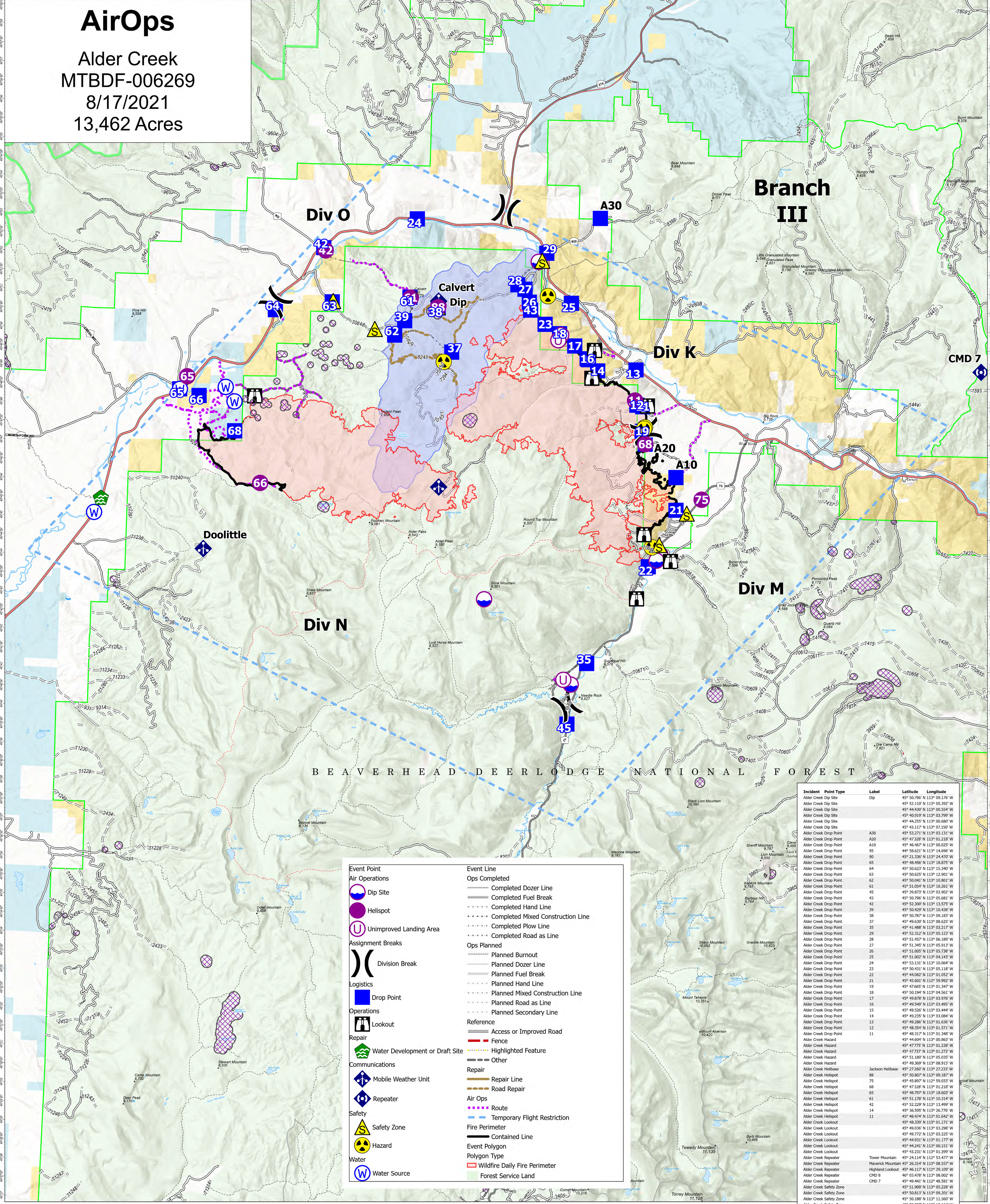


AirOps

Alder Creek
MTBDF-006269
8/17/2021
13,462 Acres



Incident	Point Type	Label	Latitude	Longitude
Alder Creek Dip Site	Dip		45° 50.796' N 113° 09.170' W	
Alder Creek Dip Site			45° 52.110' N 113° 05.390' W	
Alder Creek Dip Site			45° 44.430' N 113° 00.554' W	
Alder Creek Dip Site			45° 40.919' N 113° 03.799' W	
Alder Creek Dip Site			45° 44.255' N 113° 00.680' W	
Alder Creek Dip Site			45° 43.117' N 113° 07.350' W	
Alder Creek Dip Site			45° 53.271' N 113° 03.111' W	
Alder Creek Drop Point	A30		45° 47.328' N 113° 01.218' W	
Alder Creek Drop Point	A10		45° 46.467' N 113° 00.025' W	
Alder Creek Drop Point	95		44° 58.621' N 113° 14.690' W	
Alder Creek Drop Point	90		45° 21.236' N 113° 04.470' W	
Alder Creek Drop Point	65		45° 48.456' N 113° 18.875' W	
Alder Creek Drop Point	64		45° 50.623' N 113° 15.340' W	
Alder Creek Drop Point	63		45° 50.625' N 113° 12.901' W	
Alder Creek Drop Point	62		45° 50.041' N 113° 10.801' W	
Alder Creek Drop Point	61		45° 51.054' N 113° 08.261' W	
Alder Creek Drop Point	45		45° 39.873' N 113° 03.902' W	
Alder Creek Drop Point	43		45° 50.796' N 113° 05.681' W	
Alder Creek Drop Point	42		45° 52.300' N 113° 13.575' W	
Alder Creek Drop Point	41		45° 50.429' N 113° 04.581' W	
Alder Creek Drop Point	38		45° 50.787' N 113° 09.183' W	
Alder Creek Drop Point	37		45° 49.630' N 113° 08.625' W	
Alder Creek Drop Point	35		45° 41.888' N 113° 03.217' W	
Alder Creek Drop Point	29		45° 52.312' N 113° 05.123' W	
Alder Creek Drop Point	28		45° 51.457' N 113° 06.180' W	
Alder Creek Drop Point	27		45° 51.345' N 113° 05.913' W	
Alder Creek Drop Point	26		45° 51.005' N 113° 05.738' W	
Alder Creek Drop Point	25		45° 51.002' N 113° 04.143' W	
Alder Creek Drop Point	24		45° 53.231' N 113° 03.394' W	
Alder Creek Drop Point	23		45° 50.431' N 113° 05.118' W	
Alder Creek Drop Point	22		45° 44.082' N 113° 01.052' W	
Alder Creek Drop Point	21		45° 45.601' N 113° 59.992' W	
Alder Creek Drop Point	19		45° 47.665' N 113° 01.347' W	
Alder Creek Drop Point	18		45° 49.194' N 113° 04.581' W	
Alder Creek Drop Point	17		45° 49.878' N 113° 03.976' W	
Alder Creek Drop Point	16		45° 49.549' N 113° 03.495' W	
Alder Creek Drop Point	15		45° 49.526' N 113° 04.444' W	
Alder Creek Drop Point	14		45° 49.235' N 113° 03.894' W	
Alder Creek Drop Point	13		45° 49.286' N 113° 01.638' W	
Alder Creek Drop Point	12		45° 48.354' N 113° 01.571' W	
Alder Creek Drop Point	11		45° 48.317' N 113° 01.348' W	
Alder Creek Hazard			45° 44.604' N 113° 00.863' W	
Alder Creek Hazard			45° 47.737' N 113° 01.272' W	
Alder Creek Hazard			45° 51.180' N 113° 05.035' W	
Alder Creek Hazard			45° 49.369' N 113° 08.915' W	
Alder Creek Helibase	Jackson Helibase		45° 37.260' N 113° 07.233' W	
Alder Creek Helispot			45° 50.807' N 113° 08.187' W	
Alder Creek Helispot			45° 45.897' N 113° 05.033' W	
Alder Creek Helispot			45° 47.328' N 113° 01.218' W	
Alder Creek Helispot			45° 48.797' N 113° 18.603' W	
Alder Creek Helispot			45° 51.176' N 113° 03.394' W	
Alder Creek Helispot			45° 52.229' N 113° 13.499' W	
Alder Creek Helispot			45° 36.595' N 113° 26.776' W	
Alder Creek Helispot			45° 48.474' N 113° 01.642' W	
Alder Creek Lookout			45° 48.339' N 113° 01.171' W	
Alder Creek Lookout			45° 49.036' N 113° 03.298' W	
Alder Creek Lookout			45° 49.772' N 113° 03.225' W	
Alder Creek Lookout			45° 44.931' N 113° 01.177' W	
Alder Creek Lookout			45° 44.241' N 113° 00.151' W	
Alder Creek Lookout			45° 43.231' N 113° 03.399' W	
Alder Creek Repeater		Tower Mountain	45° 24.114' N 112° 53.477' W	
Alder Creek Repeater		Maverick Mountain	45° 26.314' N 112° 08.557' W	
Alder Creek Repeater		Highland Lookout	45° 46.117' N 112° 29.109' W	
Alder Creek Repeater	CMD 8		46° 03.478' N 113° 08.002' W	
Alder Creek Repeater	CMD 7		45° 49.441' N 113° 05.851' W	
Alder Creek Safety Zone			45° 51.900' N 113° 05.238' W	
Alder Creek Safety Zone			45° 50.813' N 113° 09.201' W	
Alder Creek Safety Zone			45° 50.189' N 113° 11.560' W	
Alder Creek Safety Zone			45° 50.897' N 113° 13.164' W	
Alder Creek Safety Zone			45° 44.671' N 113° 00.592' W	
Alder Creek Safety Zone			45° 45.519' N 112° 59.583' W	
Alder Creek Unimproved Landing Area			45° 50.160' N 113° 04.501' W	
Alder Creek Unimproved Landing Area			45° 50.021' N 113° 04.602' W	
Alder Creek Unimproved Landing Area			45° 41.040' N 113° 04.083' W	

Event Point

- Air Operations
 - Dip Site
 - Helispot
 - Unimproved Landing Area
- Assignment Breaks
 - Division Break
- Logistics
 - Drop Point
- Operations
 - Lookout
- Repair
 - Water Development or Draft Site
- Communications
 - Mobile Weather Unit
 - Repeater
- Safety
 - Safety Zone
 - Hazard
- Water
 - Water Source

Event Line

- Ops Completed
 - Completed Dozer Line
 - Completed Fuel Break
 - Completed Hand Line
 - Completed Mixed Construction Line
 - Completed Plow Line
 - Completed Road as Line
- Ops Planned
 - Planned Burnout
 - Planned Dozer Line
 - Planned Fuel Break
 - Planned Hand Line
 - Planned Mixed Construction Line
 - Planned Road as Line
 - Planned Secondary Line
- Reference
 - Access or Improved Road
 - Fence
 - Highlighted Feature
 - Other
- Repair
 - Repair Line
 - Road Repair
- Air Ops
 - Route
 - Temporary Flight Restriction
 - Fire Perimeter
 - Contained Line
- Event Polygon
 - Wildfire Daily Fire Perimeter
 - Forest Service Land

Flight Restriction Information

Alder Creek - 1/7629- 12,500ft ceiling
Trail Creek - 1/7630 - 11,500ft ceiling
Black Mountain - 1/1730 - 10,500ft ceiling

Fire perimeter updated from Acres from IR on 08/16/21 00:32

Scale: 1:54,688

1 inch equals 1 mile



SA Blue Team
8/16/2021 2020
North American 1983 Datum. Lat/Long Grid