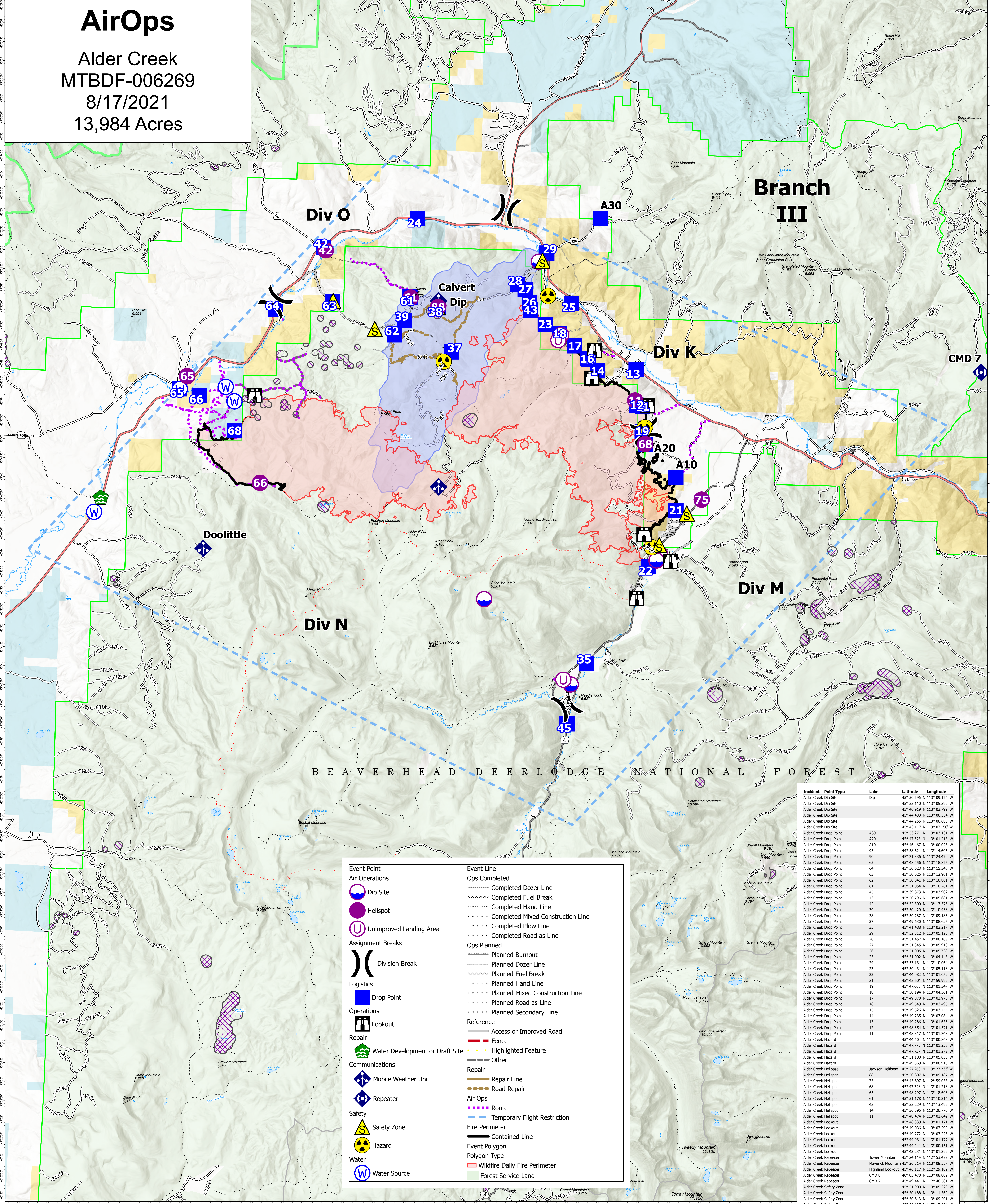


# AirOps

Alder Creek  
MTBDF-006269

8/17/2021

13,984 Acres



**Event Point**

- Air Operations
  - Dip Site
  - Helispot
  - Unimproved Landing Area
- Assignment Breaks
  - Division Break
- Logistics
  - Drop Point
- Operations
  - Lookout
- Repair
  - Water Development or Draft Site
- Communications
  - Mobile Weather Unit
  - Repeater
- Safety
  - Safety Zone
  - Hazard
- Water
  - Water Source

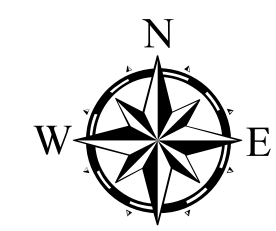
**Event Line**

- Ops Completed
  - Completed Dozer Line
  - Completed Fuel Break
  - Completed Hand Line
  - Completed Mixed Construction Line
  - Completed Plow Line
  - Completed Road as Line
- Ops Planned
  - Planned Burnout
  - Planned Dozer Line
  - Planned Fuel Break
  - Planned Hand Line
  - Planned Mixed Construction Line
  - Planned Road as Line
  - Planned Secondary Line
- Reference
  - Access or Improved Road
  - Fence
  - Highlighted Feature
  - Other
- Repair
  - Repair Line
  - Road Repair
- Air Ops
  - Route
  - Temporary Flight Restriction
- Event Polygon
  - Fire Perimeter
  - Contained Line
  - Wildfire Daily Fire Perimeter
  - Forest Service Land

Incident	Point Type	Label	Latitude	Longitude
Alder Creek	Dip Site	Dip	45° 50.796' N 113° 09.176' W	
Alder Creek	Dip Site		45° 52.110' N 113° 05.392' W	
Alder Creek	Dip Site		45° 40.919' N 113° 03.799' W	
Alder Creek	Dip Site		45° 44.430' N 113° 00.554' W	
Alder Creek	Dip Site		45° 44.255' N 113° 00.680' W	
Alder Creek	Dip Site		45° 43.117' N 113° 01.300' W	
Alder Creek	Dip Site		45° 53.271' N 113° 03.131' W	
Alder Creek	Drop Point	A30	45° 47.328' N 113° 01.218' W	
Alder Creek	Drop Point	A10	45° 46.467' N 113° 00.025' W	
Alder Creek	Drop Point	95	44° 58.621' N 113° 14.696' W	
Alder Creek	Drop Point	90	45° 21.236' N 113° 04.470' W	
Alder Creek	Drop Point	65	45° 48.456' N 113° 18.875' W	
Alder Creek	Drop Point	64	45° 50.623' N 113° 15.340' W	
Alder Creek	Drop Point	63	45° 50.625' N 113° 12.901' W	
Alder Creek	Drop Point	62	45° 50.041' N 113° 10.801' W	
Alder Creek	Drop Point	61	45° 51.054' N 113° 06.261' W	
Alder Creek	Drop Point	45	45° 39.873' N 113° 03.902' W	
Alder Creek	Drop Point	43	45° 50.796' N 113° 05.681' W	
Alder Creek	Drop Point	42	45° 52.300' N 113° 13.575' W	
Alder Creek	Drop Point	39	45° 50.299' N 113° 04.988' W	
Alder Creek	Drop Point	38	45° 50.787' N 113° 09.183' W	
Alder Creek	Drop Point	37	45° 49.630' N 113° 08.625' W	
Alder Creek	Drop Point	35	45° 41.888' N 113° 03.217' W	
Alder Creek	Drop Point	29	45° 52.312' N 113° 05.123' W	
Alder Creek	Drop Point	28	45° 51.457' N 113° 06.160' W	
Alder Creek	Drop Point	27	45° 51.345' N 113° 05.913' W	
Alder Creek	Drop Point	26	45° 51.005' N 113° 05.738' W	
Alder Creek	Drop Point	25	45° 51.002' N 113° 04.143' W	
Alder Creek	Drop Point	24	45° 53.231' N 113° 01.394' W	
Alder Creek	Drop Point	23	45° 50.431' N 113° 05.118' W	
Alder Creek	Drop Point	22	45° 44.082' N 113° 01.052' W	
Alder Creek	Drop Point	21	45° 45.601' N 113° 03.217' W	
Alder Creek	Drop Point	19	45° 47.665' N 113° 01.347' W	
Alder Creek	Drop Point	18	45° 49.054' N 113° 06.580' W	
Alder Creek	Drop Point	17	45° 49.878' N 113° 03.976' W	
Alder Creek	Drop Point	16	45° 49.549' N 113° 03.495' W	
Alder Creek	Drop Point	15	45° 49.526' N 113° 04.444' W	
Alder Creek	Drop Point	14	45° 49.235' N 113° 01.038' W	
Alder Creek	Drop Point	13	45° 49.286' N 113° 01.636' W	
Alder Creek	Drop Point	12	45° 48.354' N 113° 01.571' W	
Alder Creek	Drop Point	11	45° 48.317' N 113° 01.348' W	
Alder Creek	Hazard		45° 44.604' N 113° 00.863' W	
Alder Creek	Hazard		45° 47.737' N 113° 01.272' W	
Alder Creek	Hazard		45° 51.180' N 113° 05.035' W	
Alder Creek	Hazard		45° 49.369' N 113° 08.915' W	
Alder Creek	Helibase	Jackson Helibase	45° 27.280' N 113° 27.233' W	
Alder Creek	Helispot		45° 50.807' N 113° 06.307' W	
Alder Creek	Helispot	75	45° 45.897' N 113° 06.033' W	
Alder Creek	Helispot	68	45° 47.328' N 113° 01.218' W	
Alder Creek	Helispot	65	45° 48.797' N 113° 18.603' W	
Alder Creek	Helispot	61	45° 51.176' N 113° 03.034' W	
Alder Creek	Helispot	42	45° 52.229' N 113° 13.499' W	
Alder Creek	Helispot	14	45° 36.995' N 113° 26.776' W	
Alder Creek	Helispot	11	45° 48.474' N 113° 01.642' W	
Alder Creek	Lookout		45° 48.239' N 113° 01.171' W	
Alder Creek	Lookout		45° 49.036' N 113° 06.580' W	
Alder Creek	Lookout		45° 49.772' N 113° 03.225' W	
Alder Creek	Lookout		45° 44.931' N 113° 01.177' W	
Alder Creek	Lookout		45° 44.241' N 113° 00.151' W	
Alder Creek	Lookout		45° 43.231' N 113° 01.399' W	
Alder Creek	Repeater	Tower Mountain	45° 24.114' N 112° 53.477' W	
Alder Creek	Repeater	Maverick Mountain	45° 26.314' N 112° 08.557' W	
Alder Creek	Repeater	Highland Lookout	45° 46.117' N 112° 29.109' W	
Alder Creek	Repeater	CMD 8	46° 03.478' N 113° 08.002' W	
Alder Creek	Repeater	CMD 7	45° 49.441' N 113° 06.581' W	
Alder Creek	Safety Zone		45° 51.900' N 113° 05.238' W	
Alder Creek	Safety Zone		45° 50.188' N 113° 11.560' W	
Alder Creek	Safety Zone		45° 50.813' N 113° 09.201' W	
Alder Creek	Safety Zone		45° 50.997' N 113° 13.164' W	
Alder Creek	Safety Zone		45° 44.671' N 113° 00.592' W	
Alder Creek	Safety Zone		45° 45.519' N 112° 59.583' W	
Alder Creek	Unimproved Landing Area		45° 50.160' N 113° 04.501' W	
Alder Creek	Unimproved Landing Area		45° 50.021' N 113° 04.602' W	
Alder Creek	Unimproved Landing Area		45° 41.040' N 113° 04.083' W	

### Flight Restriction Information

Alder Creek - 1/7629- 12,500ft ceiling  
 Trail Creek - 1/7630 - 11,500ft ceiling  
 Black Mountain - 1/1730 - 10,500ft ceiling



Fire perimeter updated from  
Acres from IR on 08/16/21 22:03

0 1 2 3 4 Miles  
 1 inch equals 1 mile Scale: 1:54,688



SA Blue Team  
8/17/2021 0633  
North American 1983 Datum. Lat.Long Grid