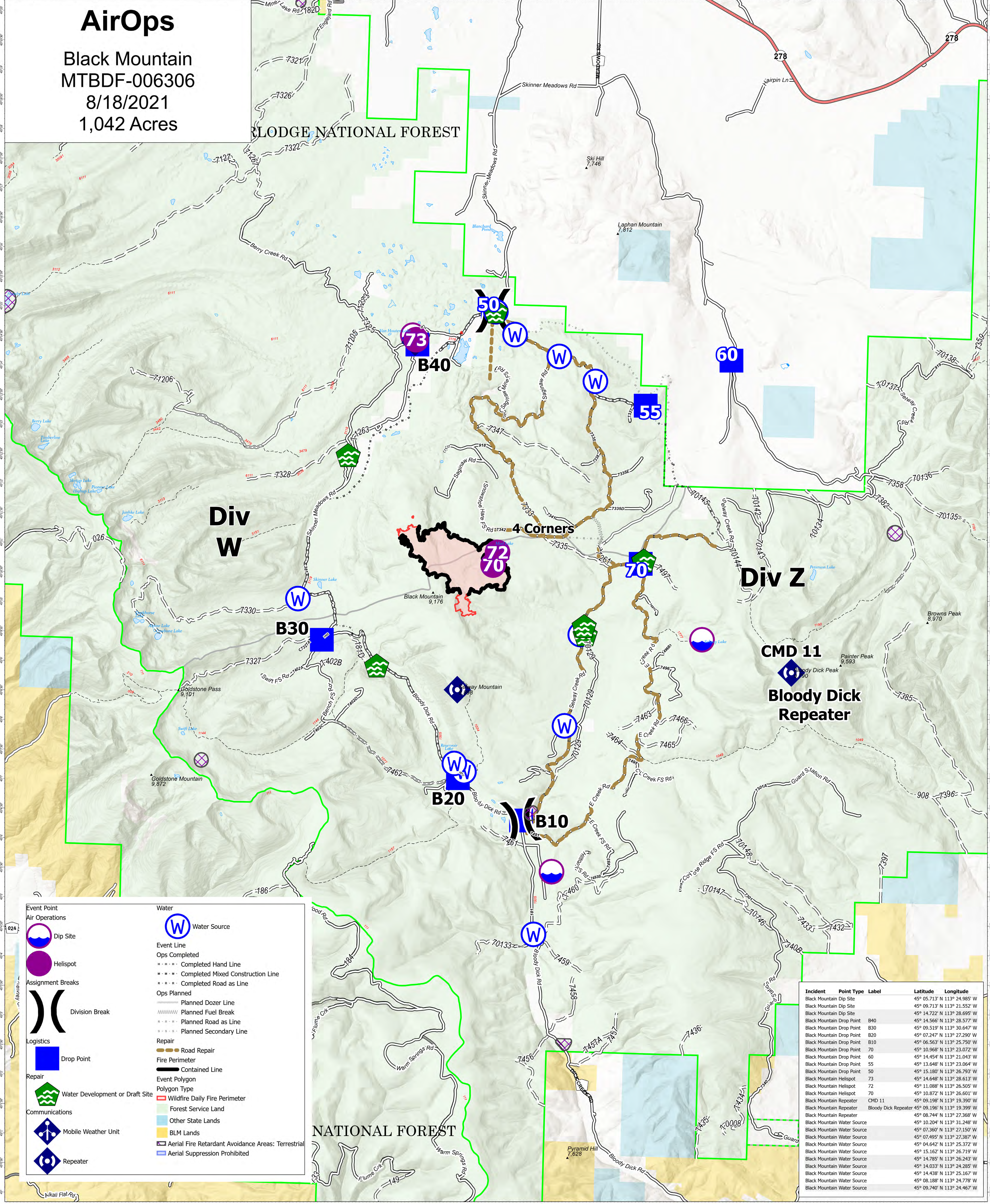


AirOps

Black Mountain
MTBDF-006306
8/18/2021
1,042 Acres

BLUDGE NATIONAL FOREST

NATIONAL FOREST



	Event Point		Water
	Air Operations		Water Source
	Assignment Breaks		Event Line
	Logistics		Ops Completed
	Repair		Completed Hand Line
	Communications		Completed Mixed Construction Line
			Completed Road as Line
			Ops Planned
			Planned Dozer Line
			Planned Fuel Break
			Planned Road as Line
			Planned Secondary Line
			Road Repair
			Contained Line
			Wildfire Daily Fire Perimeter
			Forest Service Land
			Other State Lands
			BLM Lands
			Aerial Fire Retardant Avoidance Areas: Terrestrial
			Aerial Suppression Prohibited

Incident	Point Type	Label	Latitude	Longitude
Black Mountain	Dip Site		45° 05.713' N	113° 24.985' W
Black Mountain	Dip Site		45° 09.713' N	113° 21.552' W
Black Mountain	Dip Site		45° 14.722' N	113° 28.695' W
Black Mountain	Drop Point	B40	45° 14.566' N	113° 28.577' W
Black Mountain	Drop Point	B30	45° 09.519' N	113° 30.647' W
Black Mountain	Drop Point	B20	45° 07.247' N	113° 27.290' W
Black Mountain	Drop Point	B10	45° 06.563' N	113° 25.750' W
Black Mountain	Drop Point	70	45° 10.968' N	113° 23.072' W
Black Mountain	Drop Point	60	45° 14.454' N	113° 21.043' W
Black Mountain	Drop Point	55	45° 13.648' N	113° 23.064' W
Black Mountain	Drop Point	50	45° 15.180' N	113° 26.793' W
Black Mountain	Helispot	73	45° 14.648' N	113° 28.613' W
Black Mountain	Helispot	72	45° 11.088' N	113° 26.505' W
Black Mountain	Helispot	70	45° 10.872' N	113° 26.601' W
Black Mountain	Repeater	CMD 11	45° 09.198' N	113° 19.390' W
Black Mountain	Repeater	Bloody Dick Repeater	45° 09.196' N	113° 19.399' W
Black Mountain	Repeater		45° 08.744' N	113° 27.368' W
Black Mountain	Water Source		45° 10.204' N	113° 31.248' W
Black Mountain	Water Source		45° 07.360' N	113° 27.150' W
Black Mountain	Water Source		45° 07.495' N	113° 27.387' W
Black Mountain	Water Source		45° 04.642' N	113° 25.372' W
Black Mountain	Water Source		45° 15.162' N	113° 26.719' W
Black Mountain	Water Source		45° 14.785' N	113° 26.243' W
Black Mountain	Water Source		45° 14.033' N	113° 24.285' W
Black Mountain	Water Source		45° 14.438' N	113° 25.167' W
Black Mountain	Water Source		45° 08.188' N	113° 24.778' W
Black Mountain	Water Source		45° 09.740' N	113° 24.467' W

Flight Restriction Information

Alder Creek - 1/7629- 12,500ft ceiling
Trail Creek - 1/7630 - 11,500ft ceiling
Black Mountain - 1/1730 - 10,500ft ceiling



Fire perimeter updated from
Acres from IR on 08/16/21 22:03



SA Blue Team
8/17/2021 2104
North American 1983 Datum. LatLong Grid