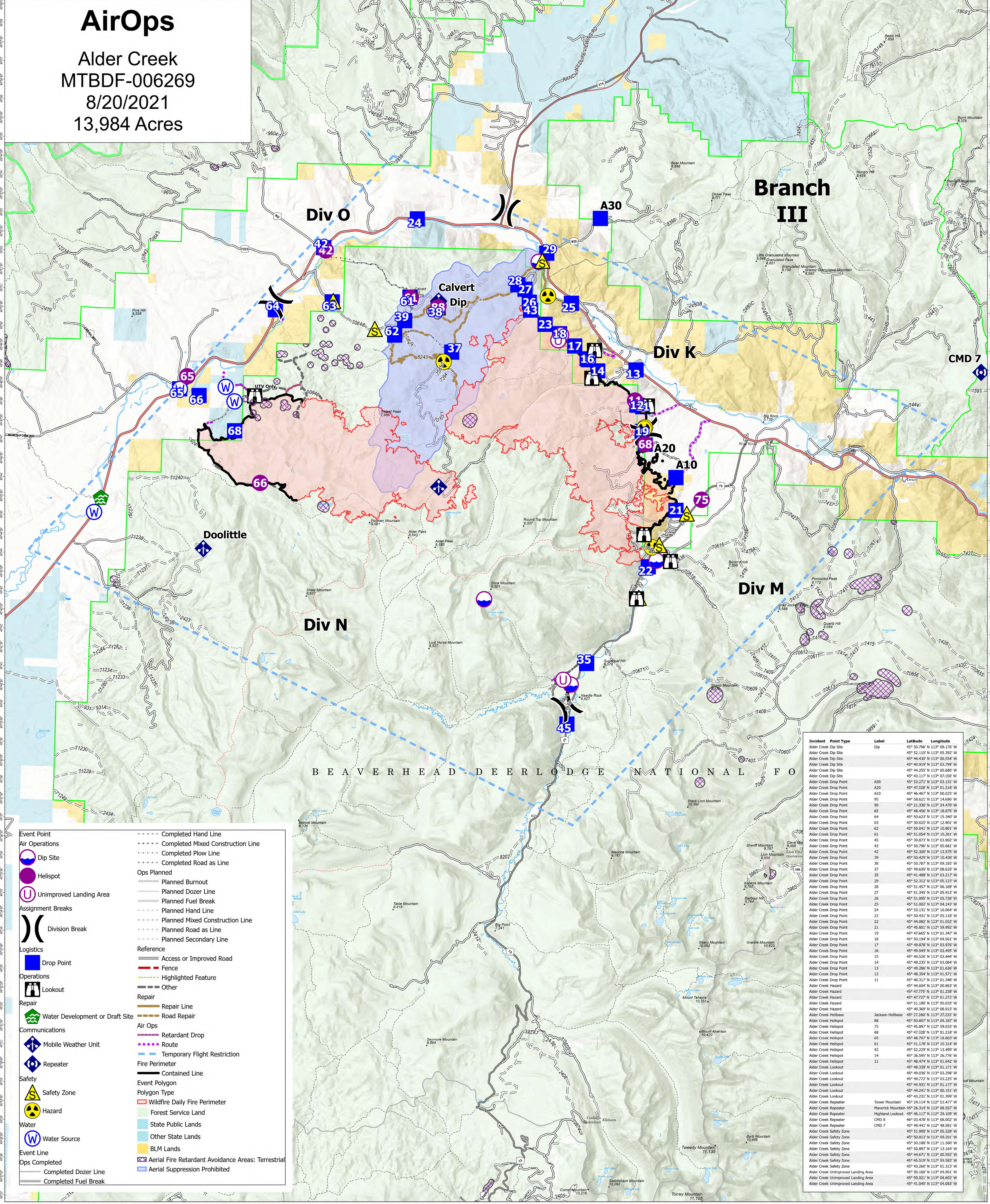


# AirOps

Alder Creek  
MTBDF-006269  
8/20/2021  
13,984 Acres



**Branch III**

**Div O**

**Div K**

**Div M**

**Div N**

**Calvert Dip**

**Doolittle**

BEAVERHEAD-DEER LODGE NATIONAL FO

Incident	Point Type	Label	Latitude	Longitude
Alder Creek Dip Site	Dip	Dip	45° 50.796' N 113° 09.176' W	
Alder Creek Dip Site	Dip	Dip	45° 52.110' N 113° 05.392' W	
Alder Creek Dip Site	Dip	Dip	45° 44.407' N 113° 02.554' W	
Alder Creek Dip Site	Dip	Dip	45° 40.919' N 113° 03.799' W	
Alder Creek Dip Site	Dip	Dip	45° 44.255' N 113° 00.680' W	
Alder Creek Dip Site	Dip	Dip	45° 43.271' N 113° 07.150' W	
Alder Creek Drop Point	A30	A30	45° 47.328' N 113° 01.218' W	
Alder Creek Drop Point	A20	A20	45° 46.467' N 113° 00.025' W	
Alder Creek Drop Point	A10	A10	45° 58.621' N 113° 14.696' W	
Alder Creek Drop Point	90	90	45° 21.336' N 113° 24.470' W	
Alder Creek Drop Point	65	65	45° 48.656' N 113° 18.875' W	
Alder Creek Drop Point	64	64	45° 50.623' N 113° 15.340' W	
Alder Creek Drop Point	63	63	45° 50.625' N 113° 12.901' W	
Alder Creek Drop Point	62	62	45° 50.041' N 113° 10.801' W	
Alder Creek Drop Point	61	61	45° 51.094' N 113° 10.261' W	
Alder Creek Drop Point	45	45	45° 39.873' N 113° 03.902' W	
Alder Creek Drop Point	43	43	45° 50.796' N 113° 05.681' W	
Alder Creek Drop Point	42	42	45° 52.309' N 113° 13.575' W	
Alder Creek Drop Point	39	39	45° 50.429' N 113° 10.438' W	
Alder Creek Drop Point	38	38	45° 49.630' N 113° 09.183' W	
Alder Creek Drop Point	37	37	45° 41.488' N 113° 03.217' W	
Alder Creek Drop Point	35	35	45° 52.312' N 113° 05.123' W	
Alder Creek Drop Point	29	29	45° 51.457' N 113° 06.189' W	
Alder Creek Drop Point	27	27	45° 51.345' N 113° 05.913' W	
Alder Creek Drop Point	26	26	45° 51.005' N 113° 05.738' W	
Alder Creek Drop Point	25	25	45° 51.062' N 113° 04.143' W	
Alder Creek Drop Point	24	24	45° 53.311' N 113° 01.064' W	
Alder Creek Drop Point	23	23	45° 50.431' N 113° 05.118' W	
Alder Creek Drop Point	22	22	45° 44.082' N 113° 01.052' W	
Alder Creek Drop Point	21	21	45° 45.601' N 113° 59.992' W	
Alder Creek Drop Point	19	19	45° 47.665' N 113° 01.347' W	
Alder Creek Drop Point	18	18	45° 49.194' N 113° 04.561' W	
Alder Creek Drop Point	17	17	45° 49.878' N 113° 03.976' W	
Alder Creek Drop Point	16	16	45° 49.549' N 113° 03.495' W	
Alder Creek Drop Point	15	15	45° 49.526' N 113° 03.444' W	
Alder Creek Drop Point	14	14	45° 49.217' N 113° 03.084' W	
Alder Creek Drop Point	13	13	45° 49.286' N 113° 01.636' W	
Alder Creek Drop Point	12	12	45° 48.354' N 113° 01.571' W	
Alder Creek Drop Point	11	11	45° 48.317' N 113° 01.348' W	
Alder Creek Hazard	Hazard	Hazard	45° 46.694' N 113° 00.863' W	
Alder Creek Hazard	Hazard	Hazard	45° 47.775' N 113° 01.238' W	
Alder Creek Hazard	Hazard	Hazard	45° 47.737' N 113° 01.272' W	
Alder Creek Hazard	Hazard	Hazard	45° 51.180' N 113° 05.035' W	
Alder Creek Hazard	Hazard	Hazard	45° 49.269' N 113° 08.915' W	
Alder Creek Helibase	Helibase	Jackson Helibase	45° 50.807' N 113° 09.187' W	
Alder Creek Helispot	Helispot	Helispot	45° 45.897' N 113° 59.033' W	
Alder Creek Helispot	Helispot	Helispot	45° 47.288' N 113° 01.218' W	
Alder Creek Helispot	Helispot	Helispot	45° 46.707' N 113° 18.603' W	
Alder Creek Helispot	Helispot	Helispot	45° 51.178' N 113° 01.314' W	
Alder Creek Helispot	Helispot	Helispot	45° 52.229' N 113° 13.499' W	
Alder Creek Helispot	Helispot	Helispot	45° 36.595' N 113° 26.776' W	
Alder Creek Helispot	Helispot	Helispot	45° 46.171' N 113° 29.109' W	
Alder Creek Helispot	Helispot	Helispot	45° 48.139' N 113° 01.175' W	
Alder Creek Lookout	Lookout	Lookout	45° 49.036' N 113° 03.298' W	
Alder Creek Lookout	Lookout	Lookout	45° 49.931' N 113° 01.177' W	
Alder Creek Lookout	Lookout	Lookout	45° 46.241' N 113° 00.151' W	
Alder Creek Lookout	Lookout	Lookout	45° 43.231' N 113° 01.399' W	
Alder Creek Repeater	Repeater	Tower Mountain	45° 24.114' N 112° 53.477' W	
Alder Creek Repeater	Repeater	Maverick Mountain	45° 26.314' N 113° 08.557' W	
Alder Creek Repeater	Repeater	Highland Lookout	45° 46.171' N 113° 29.109' W	
Alder Creek Repeater	Repeater	CMD 8	46° 03.478' N 113° 08.002' W	
Alder Creek Repeater	Repeater	CMD 7	45° 49.441' N 112° 48.581' W	
Alder Creek Safety Zone	Safety Zone	Safety Zone	45° 51.900' N 113° 05.228' W	
Alder Creek Safety Zone	Safety Zone	Safety Zone	45° 50.813' N 113° 09.201' W	
Alder Creek Safety Zone	Safety Zone	Safety Zone	45° 51.188' N 113° 11.560' W	
Alder Creek Safety Zone	Safety Zone	Safety Zone	45° 50.897' N 113° 13.164' W	
Alder Creek Safety Zone	Safety Zone	Safety Zone	45° 44.671' N 113° 00.592' W	
Alder Creek Safety Zone	Safety Zone	Safety Zone	45° 45.519' N 112° 59.583' W	
Alder Creek Unimproved Landing Area	Unimproved Landing Area	Unimproved Landing Area	45° 50.160' N 113° 04.501' W	
Alder Creek Unimproved Landing Area	Unimproved Landing Area	Unimproved Landing Area	45° 50.021' N 113° 04.602' W	
Alder Creek Unimproved Landing Area	Unimproved Landing Area	Unimproved Landing Area	45° 41.040' N 113° 04.083' W	

**Event Point**

- Air Operations
- Dip Site
- Helispot
- Unimproved Landing Area

**Assignment Breaks**

- Division Break

**Logistics**

- Drop Point

**Operations**

- Lookout

**Repair**

- Water Development or Draft Site

**Communications**

- Mobile Weather Unit
- Repeater

**Safety**

- Safety Zone
- Hazard

**Water**

- Water Source

**Event Line**

- Completed Dozer Line
- Completed Fuel Break

**Completed Hand Line**

- Completed Mixed Construction Line
- Completed Plow Line
- Completed Road as Line

**Ops Planned**

- Planned Burnout
- Planned Dozer Line
- Planned Fuel Break
- Planned Hand Line
- Planned Mixed Construction Line
- Planned Road as Line
- Planned Secondary Line

**Reference**

- Access or Improved Road
- Fence
- Highlighted Feature
- Other

**Repair**

- Repair Line
- Road Repair

**Air Ops**

- Retardant Drop
- Route
- Temporary Flight Restriction

**Fire Perimeter**

- Contained Line

**Event Polygon**

- Polygon Type
- Wildfire Daily Fire Perimeter
- Forest Service Land
- State Public Lands
- Other State Lands
- BLM Lands
- Aerial Fire Retardant Avoidance Areas: Terrestrial
- Aerial Suppression Prohibited

**Flight Restriction Information**

Alder Creek - 1/7629 - 12,500ft ceiling  
Trail Creek - 1/7630 - 11,500ft ceiling  
Black Mountain - 1/1730 - 10,500ft ceiling



Fire perimeter updated from Acres from IR on 08/16/21 22:03

