

# AirOps

Trail Creek  
MTBDF-006272  
8/20/2021  
38,845 Acres

TERROOT NATIONAL FOREST

BEAVERHEAD-DEERLODGE NATIONAL FOREST

**Air Operations**

- Dip Site
- Helispot
- Sling Site

**Assignment Breaks**

- Division Break

**Logistics**

- Drop Point
- Staging Area

**Operations**

- Lookout

**Repair**

- Water Development or Draft Site

**Communications**

- Mobile Weather Unit
- Repeater

**Safety**

- Safety Zone
- Hazard

**Water**

- Water Source

**Event Line**

**Ops Completed**

- Completed Dozer Line
- Completed Fuel Break
- Completed Hand Line
- Completed Road as Line

**Ops Planned**

- Planned Fuel Break
- Planned Hand Line
- Planned Road as Line
- Planned Secondary Line

**Reference**

- Access or Improved Road
- Fence

**Repair**

- Repair Line
- Road Repair

**Safety**

- Escape Route

**Air Ops**

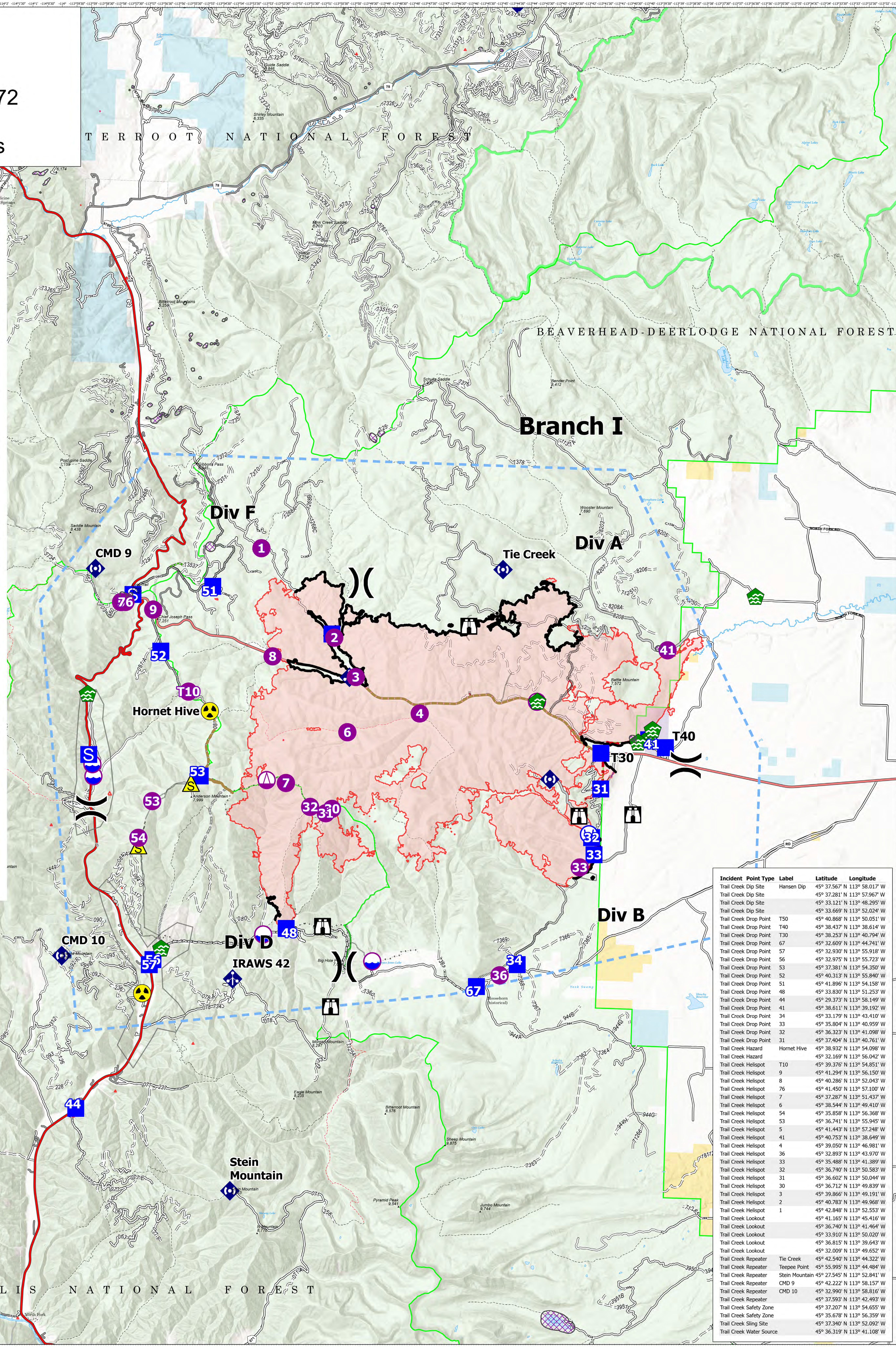
- Retardant Drop
- Temporary Flight Restriction

**Fire Perimeter**

- Contained Line

**Event Polygon**

- Polygon Type
- Other
- Wildfire Daily Fire Perimeter
- Aerial Fire Retardant Avoidance Areas: Terrestrial
- Aerial Suppression Prohibited



Incident Point Type	Label	Latitude	Longitude
Trail Creek Dip Site	Hansen Dip	45° 37.567' N	113° 58.017' W
Trail Creek Dip Site		45° 37.281' N	113° 57.967' W
Trail Creek Dip Site		45° 33.121' N	113° 48.295' W
Trail Creek Drop Point	T50	45° 33.669' N	113° 52.024' W
Trail Creek Drop Point	T40	45° 38.437' N	113° 38.614' W
Trail Creek Drop Point	T30	45° 38.253' N	113° 40.794' W
Trail Creek Drop Point	67	45° 32.609' N	113° 44.741' W
Trail Creek Drop Point	57	45° 32.930' N	113° 55.918' W
Trail Creek Drop Point	56	45° 32.975' N	113° 55.723' W
Trail Creek Drop Point	53	45° 37.381' N	113° 54.350' W
Trail Creek Drop Point	52	45° 40.313' N	113° 55.840' W
Trail Creek Drop Point	51	45° 41.896' N	113° 54.158' W
Trail Creek Drop Point	48	45° 33.830' N	113° 51.253' W
Trail Creek Drop Point	44	45° 29.373' N	113° 58.149' W
Trail Creek Drop Point	41	45° 38.611' N	113° 39.192' W
Trail Creek Drop Point	34	45° 33.179' N	113° 43.410' W
Trail Creek Drop Point	33	45° 35.804' N	113° 40.959' W
Trail Creek Drop Point	32	45° 36.323' N	113° 41.098' W
Trail Creek Drop Point	31	45° 37.404' N	113° 40.761' W
Trail Creek Hazard	Hornet Hive	45° 38.932' N	113° 54.098' W
Trail Creek Hazard		45° 32.169' N	113° 56.042' W
Trail Creek Helispot	T10	45° 39.376' N	113° 54.851' W
Trail Creek Helispot	9	45° 41.294' N	113° 56.150' W
Trail Creek Helispot	8	45° 40.286' N	113° 52.043' W
Trail Creek Helispot	76	45° 41.450' N	113° 57.100' W
Trail Creek Helispot	7	45° 37.287' N	113° 51.437' W
Trail Creek Helispot	6	45° 38.944' N	113° 49.410' W
Trail Creek Helispot	54	45° 35.858' N	113° 56.368' W
Trail Creek Helispot	53	45° 36.741' N	113° 55.945' W
Trail Creek Helispot	5	45° 41.443' N	113° 57.248' W
Trail Creek Helispot	41	45° 40.753' N	113° 38.649' W
Trail Creek Helispot	4	45° 39.050' N	113° 46.981' W
Trail Creek Helispot	36	45° 32.893' N	113° 43.970' W
Trail Creek Helispot	33	45° 35.488' N	113° 41.889' W
Trail Creek Helispot	32	45° 36.740' N	113° 50.583' W
Trail Creek Helispot	31	45° 36.602' N	113° 50.044' W
Trail Creek Helispot	30	45° 36.712' N	113° 49.839' W
Trail Creek Helispot	3	45° 39.866' N	113° 49.191' W
Trail Creek Helispot	2	45° 40.783' N	113° 49.968' W
Trail Creek Helispot	1	45° 42.848' N	113° 52.553' W
Trail Creek Lookout		45° 41.165' N	113° 45.416' W
Trail Creek Lookout		45° 36.740' N	113° 41.464' W
Trail Creek Lookout		45° 33.910' N	113° 50.020' W
Trail Creek Lookout		45° 36.815' N	113° 39.643' W
Trail Creek Lookout		45° 32.009' N	113° 49.652' W
Trail Creek Repeater	Tie Creek	45° 42.540' N	113° 44.322' W
Trail Creek Repeater	Teepee Point	45° 55.995' N	113° 44.484' W
Trail Creek Repeater	Stein Mountain	45° 27.545' N	113° 52.841' W
Trail Creek Repeater	CMD 9	45° 42.222' N	113° 58.157' W
Trail Creek Repeater	CMD 10	45° 32.990' N	113° 58.816' W
Trail Creek Repeater		45° 37.593' N	113° 42.493' W
Trail Creek Safety Zone		45° 37.207' N	113° 54.655' W
Trail Creek Safety Zone		45° 35.678' N	113° 56.359' W
Trail Creek Sling Site		45° 37.340' N	113° 52.092' W
Trail Creek Water Source		45° 36.319' N	113° 41.108' W

Flight Restriction Information

Alder Creek - 1/7629- 12,500ft ceiling  
Trail Creek - 1/7630 - 11,500ft ceiling  
Black Mountain - 1/1730 - 10,500ft ceiling



SA Blue Team  
8/19/2021 2112  
North American 1983 Datum. LatLong Grid

Fire perimeter updated from  
Acres from IR on 08/16/21 22:23

Scale: 1:54,688

1 inch equals 1 mile