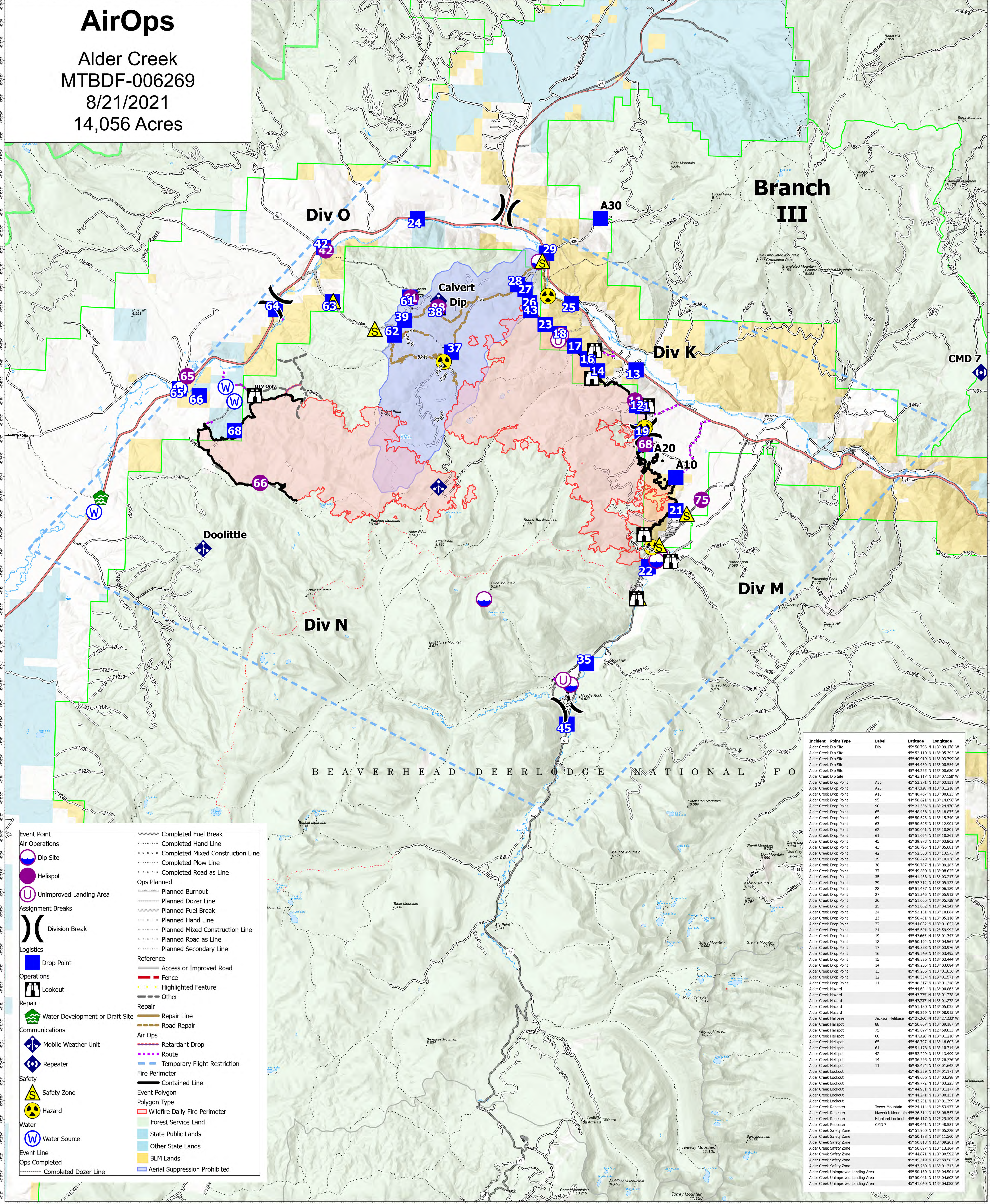


AirOps

Alder Creek
MTBDF-006269
8/21/2021
14,056 Acres



BEAVERHEAD DEER LODGE NATIONAL FO

Incident	Point Type	Label	Latitude	Longitude
Alder Creek Dip Site	Dip	Dip	45° 50.796' N 113° 09.176' W	
Alder Creek Dip Site	Dip		45° 52.110' N 113° 05.397' W	
Alder Creek Dip Site	Dip		45° 40.519' N 113° 03.799' W	
Alder Creek Dip Site	Dip		45° 44.430' N 113° 00.554' W	
Alder Creek Dip Site	Dip		45° 44.255' N 113° 00.680' W	
Alder Creek Dip Site	Dip		45° 43.117' N 113° 07.150' W	
Alder Creek Drop Point	A30	A30	45° 53.271' N 113° 03.131' W	
Alder Creek Drop Point	A30	A30	45° 47.208' N 113° 01.210' W	
Alder Creek Drop Point	A10	A10	45° 46.467' N 113° 00.025' W	
Alder Creek Drop Point	95	95	44° 58.621' N 113° 14.696' W	
Alder Creek Drop Point	90	90	45° 21.336' N 113° 24.470' W	
Alder Creek Drop Point	65	65	45° 48.556' N 113° 18.870' W	
Alder Creek Drop Point	64	64	45° 50.623' N 113° 15.340' W	
Alder Creek Drop Point	63	63	45° 50.625' N 113° 12.901' W	
Alder Creek Drop Point	62	62	45° 50.041' N 113° 10.801' W	
Alder Creek Drop Point	61	61	45° 51.054' N 113° 10.261' W	
Alder Creek Drop Point	45	45	45° 39.772' N 113° 03.902' W	
Alder Creek Drop Point	43	43	45° 50.796' N 113° 05.681' W	
Alder Creek Drop Point	42	42	45° 52.300' N 113° 13.575' W	
Alder Creek Drop Point	39	39	45° 50.429' N 113° 10.438' W	
Alder Creek Drop Point	38	38	45° 50.787' N 113° 06.185' W	
Alder Creek Drop Point	37	37	45° 49.039' N 113° 08.620' W	
Alder Creek Drop Point	35	35	45° 41.488' N 113° 03.217' W	
Alder Creek Drop Point	29	29	45° 52.312' N 113° 05.123' W	
Alder Creek Drop Point	28	28	45° 51.457' N 113° 06.189' W	
Alder Creek Drop Point	27	27	45° 51.345' N 113° 05.912' W	
Alder Creek Drop Point	26	26	45° 51.005' N 113° 05.738' W	
Alder Creek Drop Point	25	25	45° 51.002' N 113° 04.143' W	
Alder Creek Drop Point	24	24	45° 53.131' N 113° 10.064' W	
Alder Creek Drop Point	23	23	45° 50.431' N 113° 05.118' W	
Alder Creek Drop Point	22	22	45° 44.682' N 113° 01.052' W	
Alder Creek Drop Point	21	21	45° 45.601' N 113° 59.992' W	
Alder Creek Drop Point	19	19	45° 47.665' N 113° 01.347' W	
Alder Creek Drop Point	18	18	45° 50.194' N 113° 04.561' W	
Alder Creek Drop Point	17	17	45° 49.206' N 113° 03.570' W	
Alder Creek Drop Point	16	16	45° 49.549' N 113° 03.495' W	
Alder Creek Drop Point	15	15	45° 49.526' N 113° 03.444' W	
Alder Creek Drop Point	14	14	45° 49.235' N 113° 03.084' W	
Alder Creek Drop Point	13	13	45° 49.286' N 113° 01.630' W	
Alder Creek Drop Point	12	12	45° 48.354' N 113° 01.571' W	
Alder Creek Drop Point	11	11	45° 48.317' N 113° 01.348' W	
Alder Creek Hazard			45° 44.604' N 113° 00.863' W	
Alder Creek Hazard			45° 47.775' N 113° 01.239' W	
Alder Creek Hazard			45° 47.237' N 113° 01.272' W	
Alder Creek Hazard			45° 51.180' N 113° 05.035' W	
Alder Creek Hazard			45° 49.369' N 113° 08.915' W	
Alder Creek Helibase	Jackson Helibase	Jackson Helibase	45° 27.260' N 113° 27.233' W	
Alder Creek Helispot			45° 50.807' N 113° 06.187' W	
Alder Creek Helispot			45° 45.807' N 113° 05.023' W	
Alder Creek Helispot			45° 47.328' N 113° 01.218' W	
Alder Creek Helispot			45° 48.797' N 113° 18.603' W	
Alder Creek Helispot			61	45° 51.178' N 113° 10.314' W
Alder Creek Helispot			42	45° 52.229' N 113° 14.499' W
Alder Creek Helispot			14	45° 36.982' N 113° 26.770' W
Alder Creek Helispot			11	45° 48.474' N 113° 01.642' W
Alder Creek Lookout				45° 48.339' N 113° 01.171' W
Alder Creek Lookout				45° 49.036' N 113° 03.298' W
Alder Creek Lookout				45° 49.772' N 113° 03.222' W
Alder Creek Lookout				45° 44.931' N 113° 01.177' W
Alder Creek Lookout				45° 44.241' N 113° 00.151' W
Alder Creek Lookout				45° 43.231' N 113° 01.399' W
Alder Creek Repeater	Tower Mountain	Tower Mountain	45° 24.114' N 113° 23.477' W	
Alder Creek Repeater	Haystack Mountain	Haystack Mountain	45° 26.114' N 113° 08.555' W	
Alder Creek Repeater	Highland Lookout	Highland Lookout	45° 46.117' N 112° 29.109' W	
Alder Creek Repeater	CMD 7	CMD 7	45° 49.441' N 112° 48.581' W	
Alder Creek Safety Zone				45° 51.900' N 113° 05.228' W
Alder Creek Safety Zone				45° 50.585' N 113° 11.560' W
Alder Creek Safety Zone				45° 50.813' N 113° 09.201' W
Alder Creek Safety Zone				45° 50.897' N 113° 13.164' W
Alder Creek Safety Zone				45° 44.671' N 113° 00.592' W
Alder Creek Safety Zone				45° 45.519' N 112° 59.583' W
Alder Creek Safety Zone				45° 43.562' N 113° 01.311' W
Alder Creek Unimproved Landing Area				45° 50.160' N 113° 04.501' W
Alder Creek Unimproved Landing Area				45° 50.021' N 113° 04.602' W
Alder Creek Unimproved Landing Area				45° 41.049' N 113° 04.083' W

- Event Point
- Air Operations
 - Dip Site
 - Helispot
 - Unimproved Landing Area
- Assignment Breaks
 - Division Break
- Logistics
 - Drop Point
 - Lookout
- Repair
 - Water Development or Draft Site
- Communications
 - Mobile Weather Unit
 - Repeater
- Safety
 - Safety Zone
 - Hazard
- Water
 - Water Source
- Event Line
 - Completed Dozer Line
- Completed Fuel Break
- Completed Hand Line
- Completed Mixed Construction Line
- Completed Plow Line
- Completed Road as Line
- Ops Planned
 - Planned Burnout
 - Planned Dozer Line
 - Planned Fuel Break
 - Planned Hand Line
 - Planned Mixed Construction Line
 - Planned Road as Line
 - Planned Secondary Line
- Reference
 - Access or Improved Road
 - Fence
 - Highlighted Feature
 - Other
- Repair
 - Repair Line
 - Road Repair
- Air Ops
 - Retardant Drop
 - Route
 - Temporary Flight Restriction
- Fire Perimeter
 - Contained Line
 - Wildfire Daily Fire Perimeter
- Event Polygon
 - Forest Service Land
 - State Public Lands
 - Other State Lands
 - BLM Lands
 - Aerial Suppression Prohibited

Flight Restriction Information

Alder Creek - 1/7629 - 12,500ft ceiling
Trail Creek - 1/7630 - 11,500ft ceiling
Black Mountain - 1/1730 - 10,500ft ceiling



Fire perimeter updated from Acres from IR on 08/19/21 20:39

0 1 2 3 4 Miles
1 inch equals 1 mile Scale: 1:54,688

