

AirOps

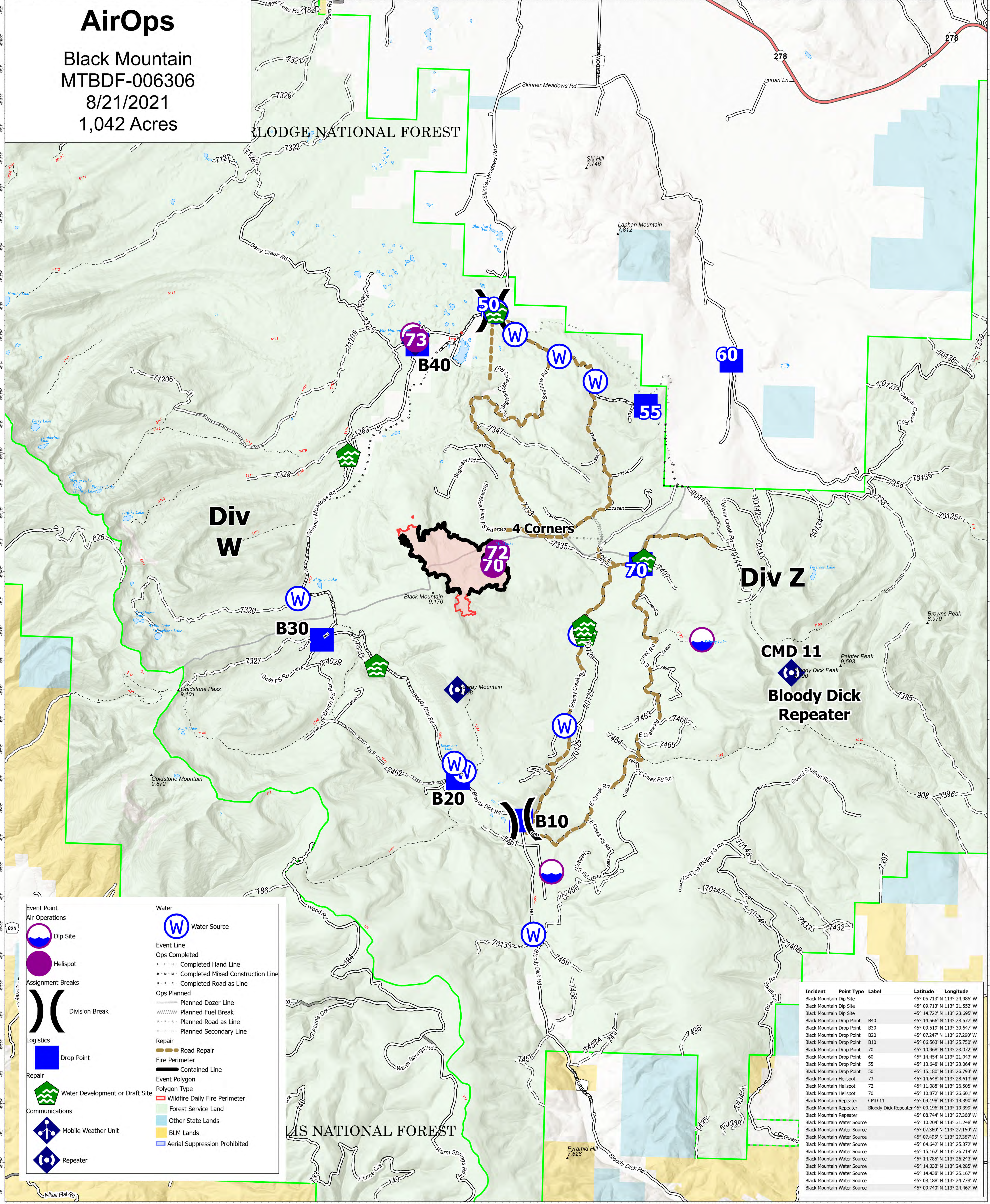
Black Mountain
MTBDF-006306

8/21/2021

1,042 Acres

BLUDGE NATIONAL FOREST

BLIS NATIONAL FOREST



	Dip Site		Water Source
	Helispot		Water Development or Draft Site
	Division Break		Mobile Weather Unit
	Drop Point		Repeater
	Road Repair		Fire Perimeter
	Planned Dozer Line		Wildfire Daily Fire Perimeter
	Planned Fuel Break		Forest Service Land
	Planned Road as Line		Other State Lands
	Planned Secondary Line		BLM Lands
	Completed Hand Line		Aerial Suppression Prohibited
	Completed Mixed Construction Line		
	Completed Road as Line		
	Ops Planned		

Incident	Point Type	Label	Latitude	Longitude
Black Mountain	Dip Site		45° 05.713' N	113° 24.985' W
Black Mountain	Dip Site		45° 09.713' N	113° 21.552' W
Black Mountain	Dip Site		45° 14.722' N	113° 28.695' W
Black Mountain	Drop Point	B40	45° 14.566' N	113° 28.577' W
Black Mountain	Drop Point	B30	45° 09.519' N	113° 30.647' W
Black Mountain	Drop Point	B20	45° 07.247' N	113° 27.290' W
Black Mountain	Drop Point	B10	45° 06.563' N	113° 25.750' W
Black Mountain	Drop Point	70	45° 10.968' N	113° 23.072' W
Black Mountain	Drop Point	60	45° 14.454' N	113° 21.043' W
Black Mountain	Drop Point	55	45° 13.648' N	113° 23.064' W
Black Mountain	Drop Point	50	45° 15.180' N	113° 26.793' W
Black Mountain	Helispot	73	45° 14.648' N	113° 28.613' W
Black Mountain	Helispot	72	45° 11.088' N	113° 26.505' W
Black Mountain	Helispot	70	45° 10.872' N	113° 26.601' W
Black Mountain	Repeater	CMD 11	45° 09.198' N	113° 19.390' W
Black Mountain	Repeater	Bloody Dick Repeater	45° 09.196' N	113° 19.399' W
Black Mountain	Repeater		45° 08.744' N	113° 27.368' W
Black Mountain	Water Source		45° 10.204' N	113° 31.248' W
Black Mountain	Water Source		45° 07.360' N	113° 27.150' W
Black Mountain	Water Source		45° 07.495' N	113° 27.387' W
Black Mountain	Water Source		45° 04.642' N	113° 25.372' W
Black Mountain	Water Source		45° 15.162' N	113° 26.719' W
Black Mountain	Water Source		45° 14.785' N	113° 26.243' W
Black Mountain	Water Source		45° 14.033' N	113° 24.285' W
Black Mountain	Water Source		45° 14.438' N	113° 25.167' W
Black Mountain	Water Source		45° 08.188' N	113° 24.778' W
Black Mountain	Water Source		45° 09.740' N	113° 24.467' W

Flight Restriction Information
 Alder Creek - 1/7629- 12,500ft ceiling
 Trail Creek - 1/7630 - 11,500ft ceiling
 Black Mountain - 1/1730 - 10,500ft ceiling

Fire perimeter updated from Acres from IR on 08/19/21 20:39

Scale: 1:35,000
 1 inch equals 1 mile



SA Blue Team
 8/20/2021 20:24
 North American 1983 Datum. LatLong Grid