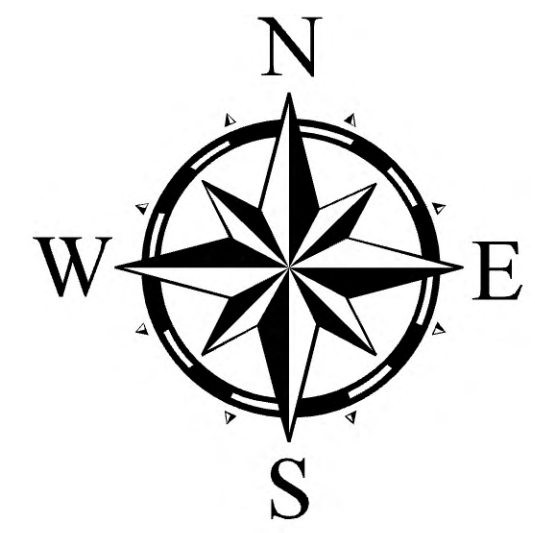
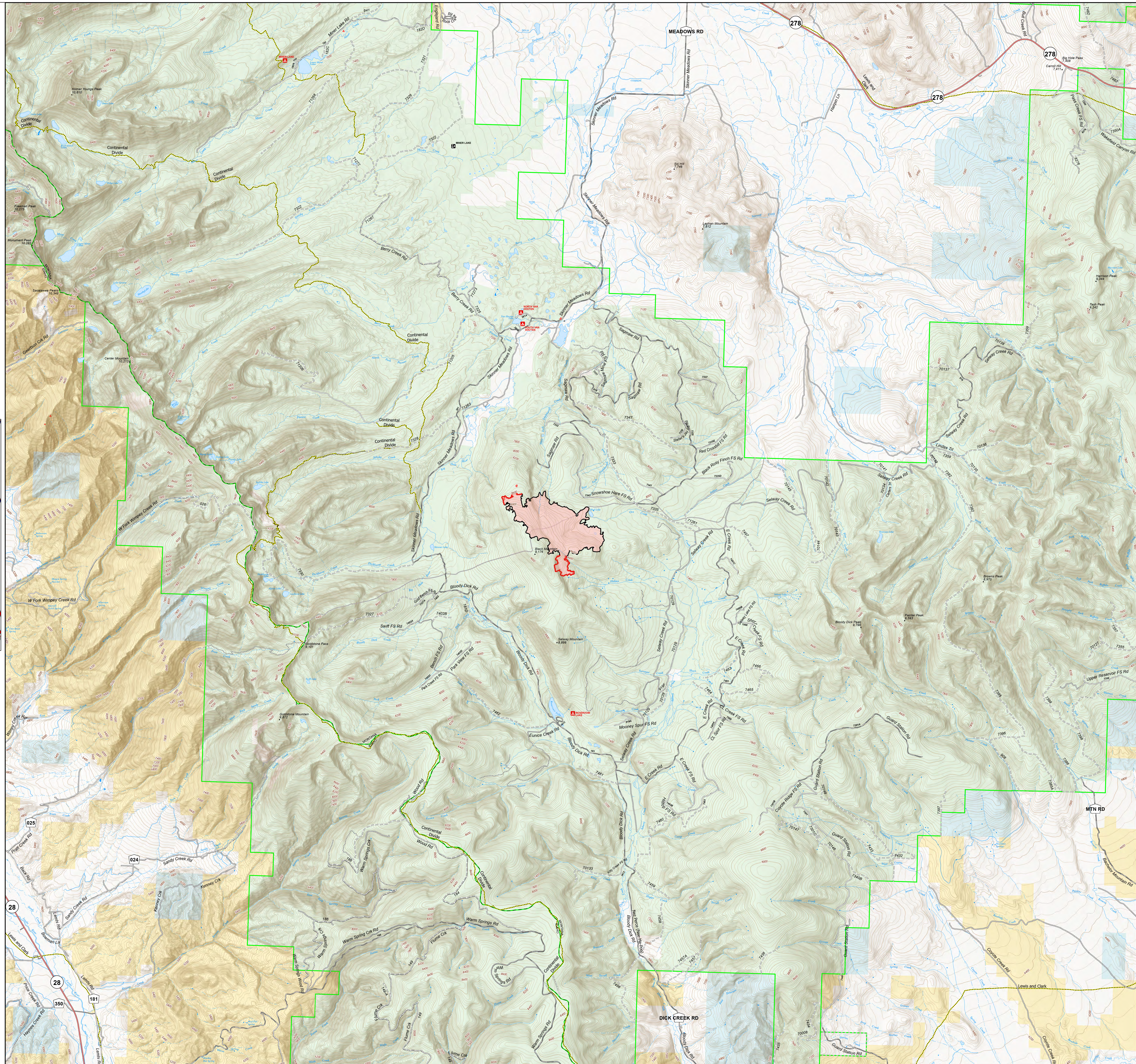
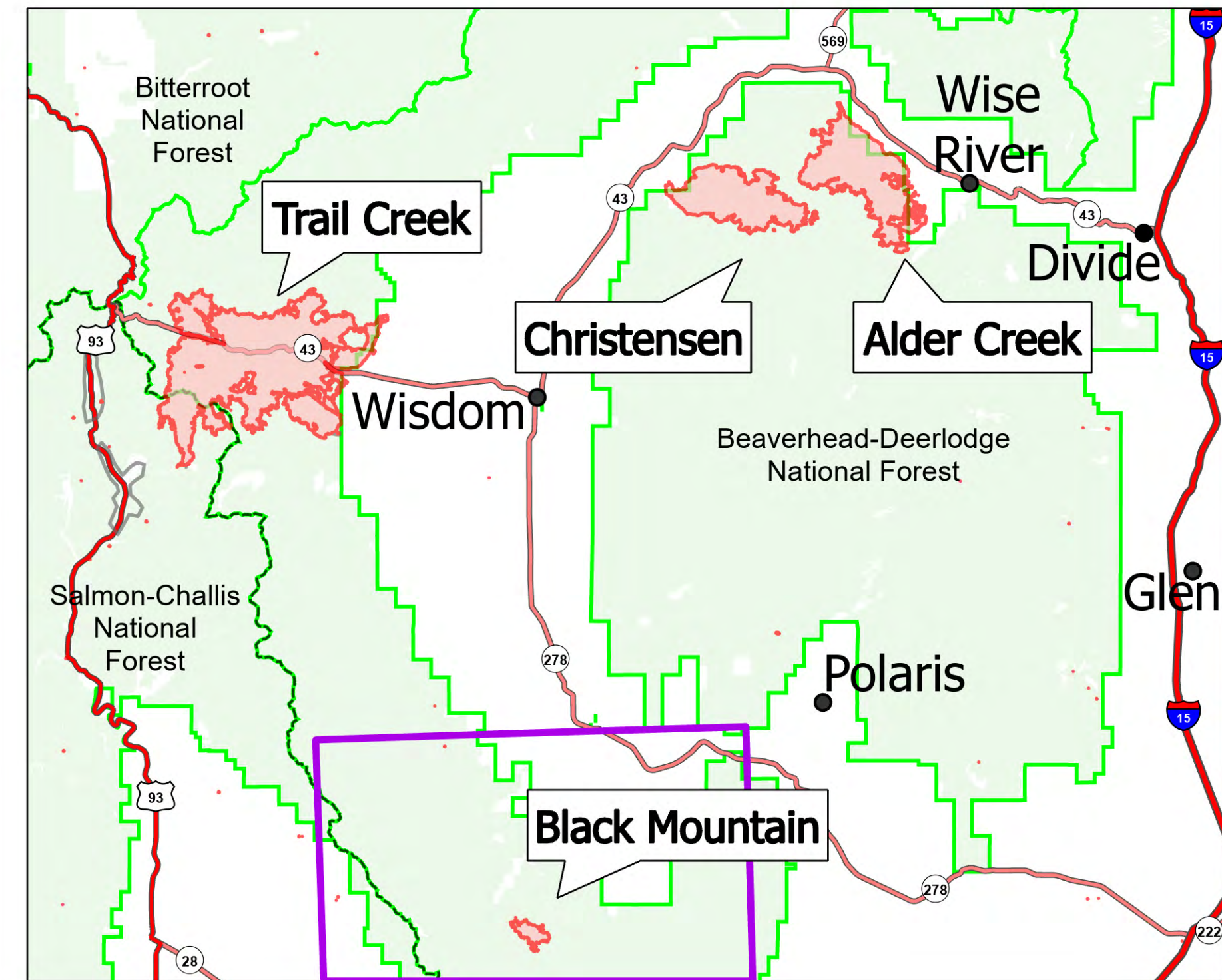


Public Information

Black Mountain
 MT-BDF-006306
 8/21/2021
 1,042 acres
 90% Contained

- Wildfire Daily Fire Perimeter
- State Public Lands
- Other State Lands
- Bureau of Land Management Lands
- Forest Service Land
- Big Hole Battlefield
- Fire Edge
- Contained Line



Fire perimeter updated from
 Acres from IR on 08/19/21 20:39

0 0.75 1.5 2.25 3 Miles

1 inch equals 0.7 miles Scale: 1:41,392

