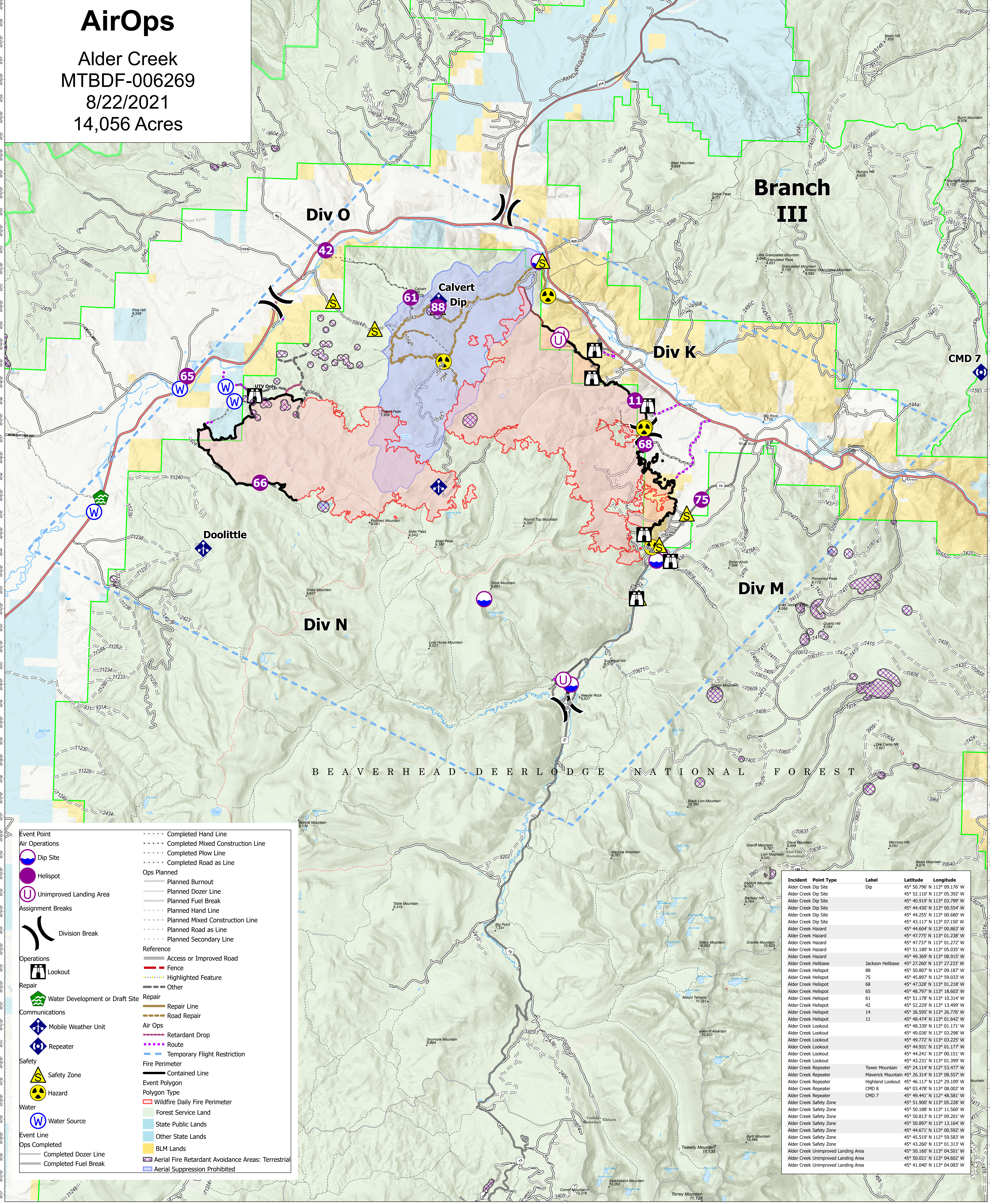


AirOps

Alder Creek
MTBDF-006269
8/22/2021
14,056 Acres

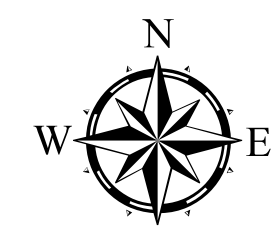


	Event Point		Completed Hand Line
	Air Operations		Completed Mixed Construction Line
	Dip Site		Completed Plow Line
	Helispot		Completed Road as Line
	Unimproved Landing Area		Planned Burnout
	Assignment Breaks		Planned Dozer Line
	Division Break		Planned Fuel Break
	Operations		Planned Hand Line
	Repair		Planned Mixed Construction Line
	Water Development or Draft Site		Planned Road as Line
	Communications		Planned Secondary Line
	Mobile Weather Unit		Access or Improved Road
	Repeater		Fence
	Safety		Highlighted Feature
	Safety Zone		Other
	Hazard		Repair Line
	Water		Road Repair
	Water Source		Air Ops
	Event Line		Retardant Drop
	Ops Completed		Route
	Completed Dozer Line		Temporary Flight Restriction
	Completed Fuel Break		Fire Perimeter
			Contained Line
			Event Polygon
			Wildfire Daily Fire Perimeter
			Forest Service Land
			State Public Lands
			Other State Lands
			BLM Lands
			Aerial Fire Retardant Avoidance Areas: Terrestrial
			Aerial Suppression Prohibited

Incident Point Type	Label	Latitude	Longitude
Alder Creek Dip Site	Dip	45° 50.796' N 113° 09.176' W	
Alder Creek Dip Site		45° 52.110' N 113° 05.392' W	
Alder Creek Dip Site		45° 40.919' N 113° 03.799' W	
Alder Creek Dip Site		45° 44.430' N 113° 00.554' W	
Alder Creek Dip Site		45° 44.255' N 113° 00.680' W	
Alder Creek Dip Site		45° 43.117' N 113° 07.150' W	
Alder Creek Hazard		45° 44.604' N 113° 00.863' W	
Alder Creek Hazard		45° 47.775' N 113° 01.238' W	
Alder Creek Hazard		45° 47.737' N 113° 01.272' W	
Alder Creek Hazard		45° 51.180' N 113° 05.035' W	
Alder Creek Hazard		45° 49.369' N 113° 08.915' W	
Alder Creek Helibase	Jackson Helibase	45° 27.260' N 113° 27.233' W	
Alder Creek Helispot	88	45° 50.807' N 113° 09.187' W	
Alder Creek Helispot	75	45° 45.897' N 112° 59.023' W	
Alder Creek Helispot	68	45° 47.328' N 113° 01.218' W	
Alder Creek Helispot	65	45° 48.797' N 113° 18.603' W	
Alder Creek Helispot	61	45° 51.178' N 113° 10.314' W	
Alder Creek Helispot	42	45° 52.229' N 113° 13.499' W	
Alder Creek Helispot	14	45° 36.595' N 113° 26.776' W	
Alder Creek Helispot	11	45° 48.474' N 113° 01.642' W	
Alder Creek Lookout		45° 48.339' N 113° 01.171' W	
Alder Creek Lookout		45° 49.036' N 113° 03.298' W	
Alder Creek Lookout		45° 49.772' N 113° 03.225' W	
Alder Creek Lookout		45° 44.931' N 113° 01.177' W	
Alder Creek Lookout		45° 44.241' N 113° 01.151' W	
Alder Creek Lookout		45° 43.231' N 113° 01.399' W	
Alder Creek Repeater	Tower Mountain	45° 24.114' N 112° 53.477' W	
Alder Creek Repeater	Maverick Mountain	45° 26.314' N 113° 08.557' W	
Alder Creek Repeater	Highland Lookout	45° 46.117' N 112° 29.109' W	
Alder Creek Repeater	CMD 8	46° 03.478' N 113° 08.002' W	
Alder Creek Repeater	CMD 7	45° 49.441' N 112° 48.581' W	
Alder Creek Safety Zone		45° 51.900' N 113° 05.228' W	
Alder Creek Safety Zone		45° 50.188' N 113° 11.560' W	
Alder Creek Safety Zone		45° 50.813' N 113° 09.201' W	
Alder Creek Safety Zone		45° 50.897' N 113° 13.164' W	
Alder Creek Safety Zone		45° 44.671' N 113° 00.592' W	
Alder Creek Safety Zone		45° 45.519' N 112° 59.583' W	
Alder Creek Safety Zone		45° 43.260' N 113° 01.313' W	
Alder Creek Unimproved Landing Area		45° 50.160' N 113° 04.501' W	
Alder Creek Unimproved Landing Area		45° 50.021' N 113° 04.602' W	
Alder Creek Unimproved Landing Area		45° 41.040' N 113° 04.083' W	

Flight Restriction Information

Alder Creek - 1/7629 - 12,500ft ceiling
Trail Creek - 1/7630 - 11,500ft ceiling
Black Mountain - 1/1730 - 10,500ft ceiling



Fire perimeter updated from Acres from IR on 08/19/21 20:39

