

AirOps

Trail Creek
MTBDF-006272
8/22/2021
39,196 Acres

TERROOT NATIONAL FOREST

BEAVERHEAD-DEERLodge NATIONAL FOREST

Air Operations

- Dip Site
- Helispot
- Sling Site

Assignment Breaks

- Division Break

Logistics

- Staging Area

Operations

- Lookout

Repair

- Water Development or Draft Site

Communications

- Mobile Weather Unit
- Repeater

Safety

- Safety Zone
- Hazard

Water

- Water Source

Event Line

Ops Completed

- Completed Dozer Line
- Completed Fuel Break
- Completed Hand Line
- Completed Road as Line

Ops Planned

- Planned Fuel Break
- Planned Hand Line
- Planned Road as Line
- Planned Secondary Line

Reference

- Access or Improved Road
- Fence

Repair

- Repair Line
- Road Repair

Safety

- Escape Route

Air Ops

- Retardant Drop
- Temporary Flight Restriction

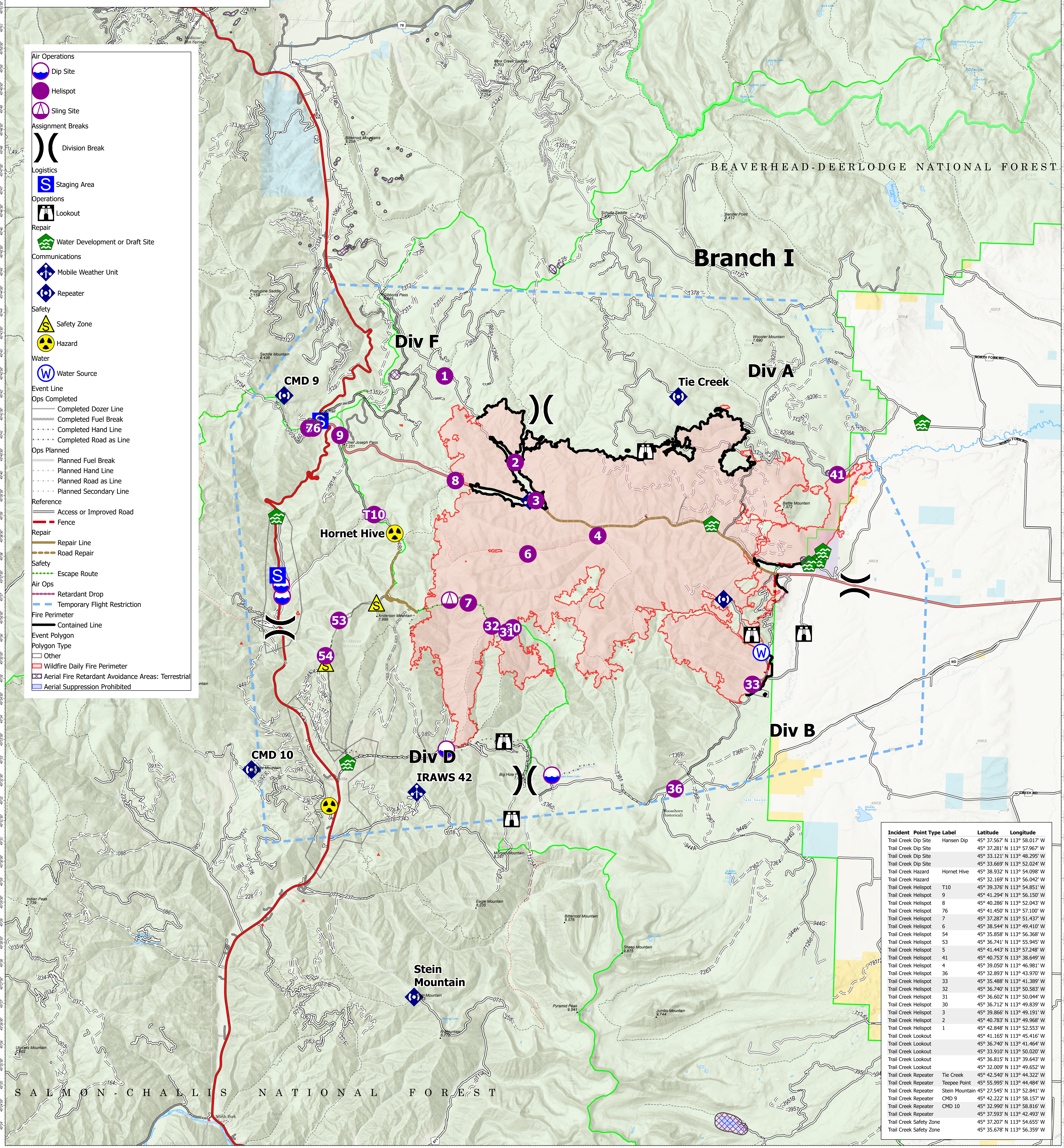
Fire Perimeter

- Contained Line

Event Polygon

Polygon Type

- Other
- Wildfire Daily Fire Perimeter
- Aerial Fire Retardant Avoidance Areas: Terrestrial
- Aerial Suppression Prohibited



Incident Point Type Label	Latitude	Longitude
Trail Creek Dip Site	45° 37.567' N	113° 58.017' W
Trail Creek Dip Site	45° 37.281' N	113° 57.967' W
Trail Creek Dip Site	45° 33.121' N	113° 48.295' W
Trail Creek Dip Site	45° 33.669' N	113° 52.024' W
Trail Creek Hazard	45° 38.932' N	113° 54.098' W
Trail Creek Hazard	45° 32.169' N	113° 56.042' W
Trail Creek Helispot T10	45° 39.376' N	113° 54.851' W
Trail Creek Helispot 9	45° 41.294' N	113° 56.150' W
Trail Creek Helispot 8	45° 40.286' N	113° 52.043' W
Trail Creek Helispot 76	45° 41.450' N	113° 57.100' W
Trail Creek Helispot 7	45° 37.287' N	113° 51.437' W
Trail Creek Helispot 6	45° 38.544' N	113° 49.410' W
Trail Creek Helispot 54	45° 35.858' N	113° 56.368' W
Trail Creek Helispot 53	45° 36.741' N	113° 55.945' W
Trail Creek Helispot 5	45° 41.443' N	113° 57.248' W
Trail Creek Helispot 41	45° 40.753' N	113° 38.649' W
Trail Creek Helispot 4	45° 39.050' N	113° 46.981' W
Trail Creek Helispot 36	45° 32.893' N	113° 43.970' W
Trail Creek Helispot 33	45° 35.488' N	113° 41.389' W
Trail Creek Helispot 32	45° 36.740' N	113° 50.583' W
Trail Creek Helispot 31	45° 36.602' N	113° 50.044' W
Trail Creek Helispot 30	45° 36.712' N	113° 49.839' W
Trail Creek Helispot 3	45° 39.866' N	113° 49.191' W
Trail Creek Helispot 2	45° 40.783' N	113° 49.968' W
Trail Creek Helispot 1	45° 42.848' N	113° 52.553' W
Trail Creek Lookout	45° 41.165' N	113° 45.416' W
Trail Creek Lookout	45° 36.740' N	113° 41.464' W
Trail Creek Lookout	45° 35.815' N	113° 39.643' W
Trail Creek Lookout	45° 32.009' N	113° 49.652' W
Trail Creek Repeater	45° 42.540' N	113° 44.322' W
Trail Creek Repeater Teepee Point	45° 55.995' N	113° 44.484' W
Trail Creek Repeater Stein Mountain	45° 27.545' N	113° 52.841' W
Trail Creek Repeater CMD 9	45° 42.222' N	113° 58.157' W
Trail Creek Repeater CMD 10	45° 32.990' N	113° 58.816' W
Trail Creek Repeater	45° 37.593' N	113° 42.493' W
Trail Creek Safety Zone	45° 37.207' N	113° 54.655' W
Trail Creek Safety Zone	45° 35.678' N	113° 56.359' W

Flight Restriction Information

Alder Creek - 1/7629 - 12,500ft ceiling
Trail Creek - 1/7630 - 11,500ft ceiling
Black Mountain - 1/1730 - 10,500ft ceiling



NR Team 5
8/21/2021 2059
North American 1983 Datum. LatLong Grid

Fire perimeter updated from Acres from IR on 08/19/21 20:20

Scale: 1:54,688

1 inch equals 1 mile