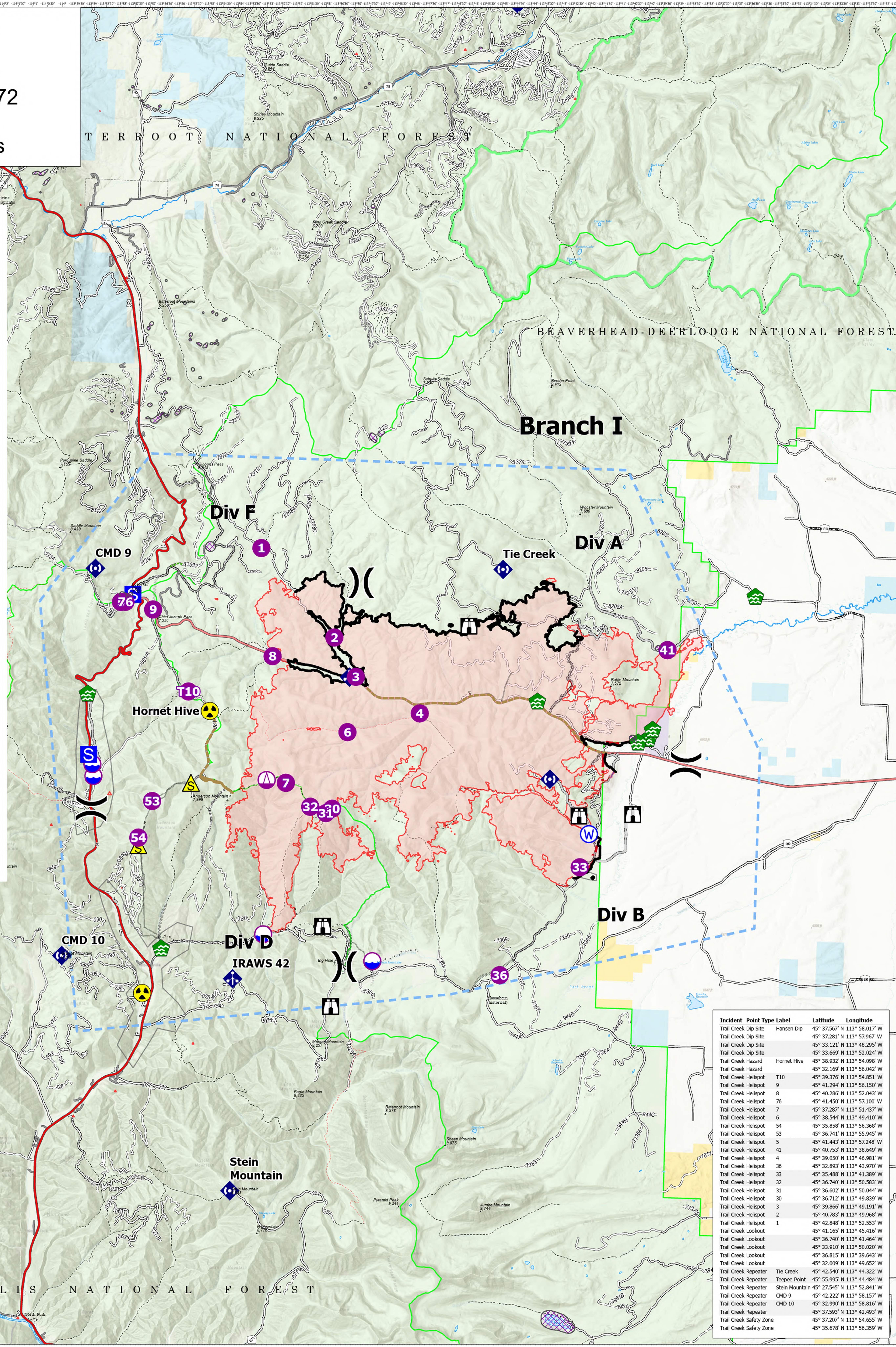


AirOps

Trail Creek
MTBDF-006272
8/22/2021
39,196 Acres

- Air Operations**
- Dip Site
- Helispot
- Sling Site
- Assignment Breaks**
- Division Break
- Logistics**
- Staging Area
- Operations**
- Lookout
- Repair**
- Water Development or Draft Site
- Communications**
- Mobile Weather Unit
- Repeater
- Safety**
- Safety Zone
- Hazard
- Water**
- Water Source
- Event Line**
- Ops Completed**
- Completed Dozer Line
- Completed Fuel Break
- Completed Hand Line
- Completed Road as Line
- Ops Planned**
- Planned Fuel Break
- Planned Hand Line
- Planned Road as Line
- Planned Secondary Line
- Reference**
- Access or Improved Road
- Fence
- Repair**
- Repair Line
- Road Repair
- Safety**
- Escape Route
- Air Ops**
- Retardant Drop
- Temporary Flight Restriction
- Fire Perimeter**
- Contained Line
- Event Polygon**
- Polygon Type**
- Other
- Wildfire Daily Fire Perimeter
- Aerial Fire Retardant Avoidance Areas: Terrestrial
- Aerial Suppression Prohibited



Incident Point Type Label	Latitude	Longitude
Trail Creek Dip Site	Hansen Dip	45° 37.567' N 113° 58.017' W
Trail Creek Dip Site		45° 37.281' N 113° 57.967' W
Trail Creek Dip Site		45° 33.121' N 113° 48.295' W
Trail Creek Dip Site		45° 33.669' N 113° 52.024' W
Trail Creek Hazard	Hornet Hive	45° 38.932' N 113° 54.098' W
Trail Creek Hazard		45° 32.169' N 113° 56.042' W
Trail Creek Helispot	T10	45° 39.376' N 113° 54.851' W
Trail Creek Helispot	9	45° 41.294' N 113° 56.150' W
Trail Creek Helispot	8	45° 40.286' N 113° 52.043' W
Trail Creek Helispot	76	45° 41.450' N 113° 57.100' W
Trail Creek Helispot	7	45° 37.287' N 113° 51.437' W
Trail Creek Helispot	6	45° 38.544' N 113° 49.410' W
Trail Creek Helispot	54	45° 35.858' N 113° 56.368' W
Trail Creek Helispot	53	45° 36.741' N 113° 55.945' W
Trail Creek Helispot	5	45° 41.443' N 113° 57.248' W
Trail Creek Helispot	41	45° 40.753' N 113° 38.649' W
Trail Creek Helispot	4	45° 39.050' N 113° 46.981' W
Trail Creek Helispot	36	45° 32.893' N 113° 43.970' W
Trail Creek Helispot	33	45° 35.488' N 113° 41.389' W
Trail Creek Helispot	32	45° 36.740' N 113° 50.583' W
Trail Creek Helispot	31	45° 36.602' N 113° 50.044' W
Trail Creek Helispot	30	45° 36.712' N 113° 49.839' W
Trail Creek Helispot	3	45° 39.866' N 113° 49.191' W
Trail Creek Helispot	2	45° 40.783' N 113° 49.968' W
Trail Creek Helispot	1	45° 42.848' N 113° 52.553' W
Trail Creek Lookout		45° 41.165' N 113° 45.416' W
Trail Creek Lookout		45° 36.740' N 113° 41.464' W
Trail Creek Lookout		45° 33.910' N 113° 50.020' W
Trail Creek Lookout		45° 36.815' N 113° 39.643' W
Trail Creek Lookout		45° 32.009' N 113° 49.652' W
Trail Creek Repeater	Tie Creek	45° 42.540' N 113° 44.322' W
Trail Creek Repeater	Teespee Point	45° 55.995' N 113° 44.484' W
Trail Creek Repeater	Stein Mountain	45° 27.545' N 113° 52.841' W
Trail Creek Repeater	CMD 9	45° 42.222' N 113° 58.157' W
Trail Creek Repeater	CMD 10	45° 32.990' N 113° 58.816' W
Trail Creek Repeater		45° 37.593' N 113° 42.493' W
Trail Creek Safety Zone		45° 37.207' N 113° 54.655' W
Trail Creek Safety Zone		45° 35.678' N 113° 56.359' W

Flight Restriction Information

Alder Creek - 1/7629 - 12,500ft ceiling
Trail Creek - 1/7630 - 11,500ft ceiling
Black Mountain - 1/1730 - 10,500ft ceiling



NR Team 5
8/21/2021 20:57
North American 1983 Datum, LatLong Grid



Fire perimeter updated from
Acres from IR on 08/19/21 20:20

0 1 2 3 4 Miles
Scale: 1:54,688