

# AirOps

Trail Creek  
MTBDF-006272  
8/23/2021  
39,196 Acres

TERROOT NATIONAL FOREST

BEAVERHEAD-DEERLodge NATIONAL FOREST

SALMON-CHALLIS NATIONAL FOREST

**Air Operations**

- Dip Site
- Helispot
- Sling Site

**Assignment Breaks**

- Division Break

**Logistics**

- Staging Area

**Operations**

- Lookout

**Communications**

- Mobile Weather Unit
- Repeater

**Safety**

- Hazard

**Water**

- Water Source

**Event Line**

**Ops Completed**

- Completed Dozer Line
- Completed Fuel Break
- Completed Hand Line
- Completed Road as Line

**Ops Planned**

- Planned Fuel Break
- Planned Hand Line
- Planned Road as Line
- Planned Secondary Line

**Reference**

- Access or Improved Road
- Fence

**Repair**

- Repair Line
- Road Repair

**Safety**

- Escape Route

**Air Ops**

- Retardant Drop
- Temporary Flight Restriction

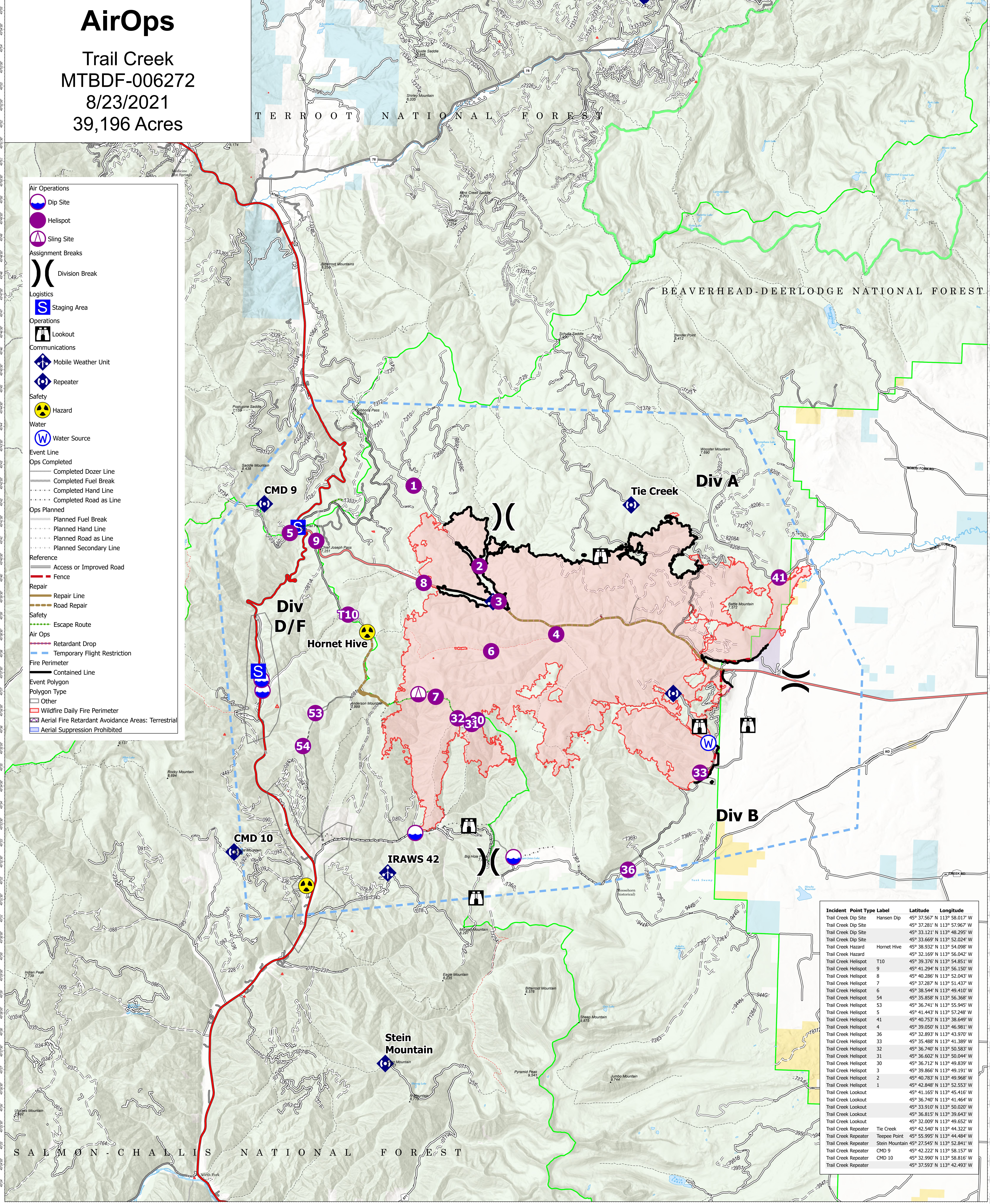
**Fire Perimeter**

- Contained Line

**Event Polygon**

**Polygon Type**

- Other
- Wildfire Daily Fire Perimeter
- Aerial Fire Retardant Avoidance Areas: Terrestrial
- Aerial Suppression Prohibited



Incident	Point Type Label	Latitude	Longitude
Trail Creek Dip Site	Hansen Dip	45° 37.567' N	113° 58.017' W
Trail Creek Dip Site		45° 37.281' N	113° 57.967' W
Trail Creek Dip Site		45° 33.121' N	113° 48.295' W
Trail Creek Dip Site		45° 33.669' N	113° 52.024' W
Trail Creek Hazard	Hornet Hive	45° 38.932' N	113° 54.098' W
Trail Creek Hazard		45° 32.169' N	113° 56.042' W
Trail Creek Helispot	T10	45° 39.376' N	113° 54.851' W
Trail Creek Helispot	9	45° 41.294' N	113° 56.150' W
Trail Creek Helispot	8	45° 40.286' N	113° 52.043' W
Trail Creek Helispot	7	45° 37.287' N	113° 51.437' W
Trail Creek Helispot	6	45° 38.544' N	113° 49.410' W
Trail Creek Helispot	54	45° 35.858' N	113° 56.368' W
Trail Creek Helispot	53	45° 36.741' N	113° 55.945' W
Trail Creek Helispot	5	45° 41.443' N	113° 57.248' W
Trail Creek Helispot	41	45° 40.753' N	113° 38.649' W
Trail Creek Helispot	4	45° 39.050' N	113° 46.981' W
Trail Creek Helispot	36	45° 32.893' N	113° 43.970' W
Trail Creek Helispot	33	45° 35.488' N	113° 41.389' W
Trail Creek Helispot	32	45° 36.740' N	113° 50.583' W
Trail Creek Helispot	31	45° 36.602' N	113° 50.044' W
Trail Creek Helispot	30	45° 36.712' N	113° 49.839' W
Trail Creek Helispot	3	45° 39.866' N	113° 49.191' W
Trail Creek Helispot	2	45° 40.783' N	113° 49.968' W
Trail Creek Lookout	1	45° 42.848' N	113° 52.553' W
Trail Creek Lookout		45° 41.165' N	113° 45.416' W
Trail Creek Lookout		45° 36.740' N	113° 41.464' W
Trail Creek Lookout		45° 33.910' N	113° 50.020' W
Trail Creek Lookout		45° 36.815' N	113° 39.643' W
Trail Creek Repeater		45° 33.009' N	113° 49.552' W
Trail Creek Repeater	Tie Creek	45° 42.540' N	113° 44.322' W
Trail Creek Repeater	Teespee Point	45° 55.995' N	113° 44.484' W
Trail Creek Repeater	Stein Mountain	45° 27.545' N	113° 52.841' W
Trail Creek Repeater	CMD 9	45° 42.222' N	113° 58.157' W
Trail Creek Repeater	CMD 10	45° 32.990' N	113° 58.816' W
Trail Creek Repeater		45° 37.593' N	113° 42.493' W

**Flight Restriction Information**

Alder Creek - 1/7629 - 12,500ft ceiling  
Trail Creek - 1/7630 - 11,500ft ceiling  
Black Mountain - 1/1730 - 10,500ft ceiling



NR Team 5  
8/22/2021 1949  
North American 1983 Datum, LatLong Grid

Fire perimeter updated from Acres from IR on 08/19/21 20:20

Scale: 1:54,688

1 inch equals 1 mile