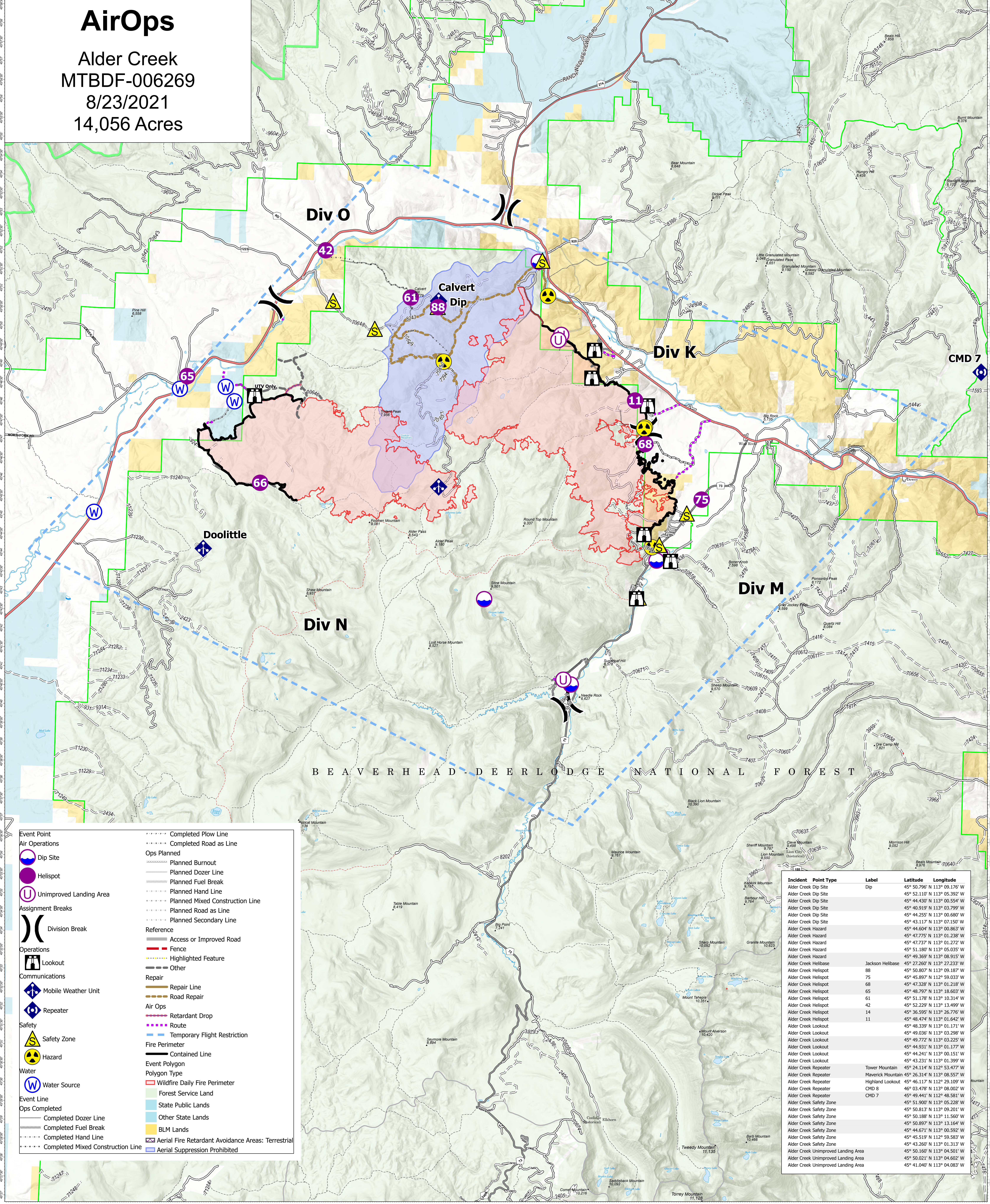


# AirOps

Alder Creek  
MTBDF-006269  
8/23/2021  
14,056 Acres



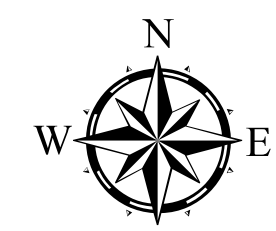
BEAVERHEAD-DEER LODGE NATIONAL FOREST

- Event Point**
- Air Operations**
- Assignment Breaks**
- Operations**
- Communications**
- Safety**
- Water**
- Event Line**
- Ops Completed**
- Completed Dozer Line**
- Completed Fuel Break**
- Completed Hand Line**
- Completed Mixed Construction Line**
- Completed Plow Line**
- Completed Road as Line**
- Ops Planned**
- Planned Burnout**
- Planned Dozer Line**
- Planned Fuel Break**
- Planned Hand Line**
- Planned Mixed Construction Line**
- Planned Road as Line**
- Planned Secondary Line**
- Reference**
- Access or Improved Road**
- Fence**
- Highlighted Feature**
- Other**
- Repair**
- Repair Line**
- Road Repair**
- Air Ops**
- Retardant Drop**
- Route**
- Temporary Flight Restriction**
- Fire Perimeter**
- Contained Line**
- Event Polygon**
- Polygon Type**
- Wildfire Daily Fire Perimeter**
- Forest Service Land**
- State Public Lands**
- Other State Lands**
- BLM Lands**
- Aerial Fire Retardant Avoidance Areas: Terrestrial**
- Aerial Suppression Prohibited**

Incident Point Type	Label	Latitude	Longitude
Alder Creek Dip Site	Dip	45° 50.796' N 113° 09.176' W	
Alder Creek Dip Site		45° 52.110' N 113° 05.392' W	
Alder Creek Dip Site		45° 44.430' N 113° 00.554' W	
Alder Creek Dip Site		45° 40.919' N 113° 03.799' W	
Alder Creek Dip Site		45° 44.255' N 113° 06.680' W	
Alder Creek Dip Site		45° 43.117' N 113° 07.150' W	
Alder Creek Hazard		45° 44.604' N 113° 08.863' W	
Alder Creek Hazard		45° 47.775' N 113° 01.238' W	
Alder Creek Hazard		45° 47.737' N 113° 01.272' W	
Alder Creek Hazard		45° 51.180' N 113° 05.035' W	
Alder Creek Hazard		45° 49.369' N 113° 08.915' W	
Alder Creek Helibase	Jackson Helibase	45° 27.260' N 113° 27.233' W	
Alder Creek Helispot	88	45° 50.807' N 113° 09.187' W	
Alder Creek Helispot	75	45° 45.897' N 112° 59.023' W	
Alder Creek Helispot	68	45° 47.328' N 113° 01.218' W	
Alder Creek Helispot	65	45° 48.797' N 113° 18.603' W	
Alder Creek Helispot	61	45° 51.178' N 113° 10.314' W	
Alder Creek Helispot	42	45° 52.229' N 113° 13.499' W	
Alder Creek Helispot	14	45° 36.595' N 113° 26.776' W	
Alder Creek Helispot	11	45° 48.474' N 113° 01.642' W	
Alder Creek Lookout		45° 48.339' N 113° 01.171' W	
Alder Creek Lookout		45° 49.036' N 113° 03.298' W	
Alder Creek Lookout		45° 49.772' N 113° 03.225' W	
Alder Creek Lookout		45° 44.931' N 113° 01.177' W	
Alder Creek Lookout		45° 44.241' N 113° 00.151' W	
Alder Creek Lookout		45° 43.231' N 113° 01.399' W	
Alder Creek Repeater	Tower Mountain	45° 24.114' N 112° 53.477' W	
Alder Creek Repeater	Maverick Mountain	45° 26.314' N 113° 08.557' W	
Alder Creek Repeater	Highland Lookout	45° 46.117' N 112° 29.109' W	
Alder Creek Repeater	CMD 8	46° 03.478' N 113° 08.002' W	
Alder Creek Repeater	CMD 7	45° 49.441' N 112° 48.581' W	
Alder Creek Safety Zone		45° 51.900' N 113° 05.228' W	
Alder Creek Safety Zone		45° 50.813' N 113° 09.201' W	
Alder Creek Safety Zone		45° 50.188' N 113° 11.560' W	
Alder Creek Safety Zone		45° 50.897' N 113° 13.164' W	
Alder Creek Safety Zone		45° 44.671' N 113° 00.592' W	
Alder Creek Safety Zone		45° 45.519' N 112° 59.583' W	
Alder Creek Safety Zone		45° 43.260' N 113° 01.313' W	
Alder Creek Unimproved Landing Area		45° 50.160' N 113° 04.501' W	
Alder Creek Unimproved Landing Area		45° 50.021' N 113° 04.602' W	
Alder Creek Unimproved Landing Area		45° 41.040' N 113° 04.083' W	

### Flight Restriction Information

Alder Creek - 1/7629 - 12,500ft ceiling  
Trail Creek - 1/7630 - 11,500ft ceiling  
Black Mountain - 1/1730 - 10,500ft ceiling



Fire perimeter updated from Acres from IR on 08/19/21 20:39

