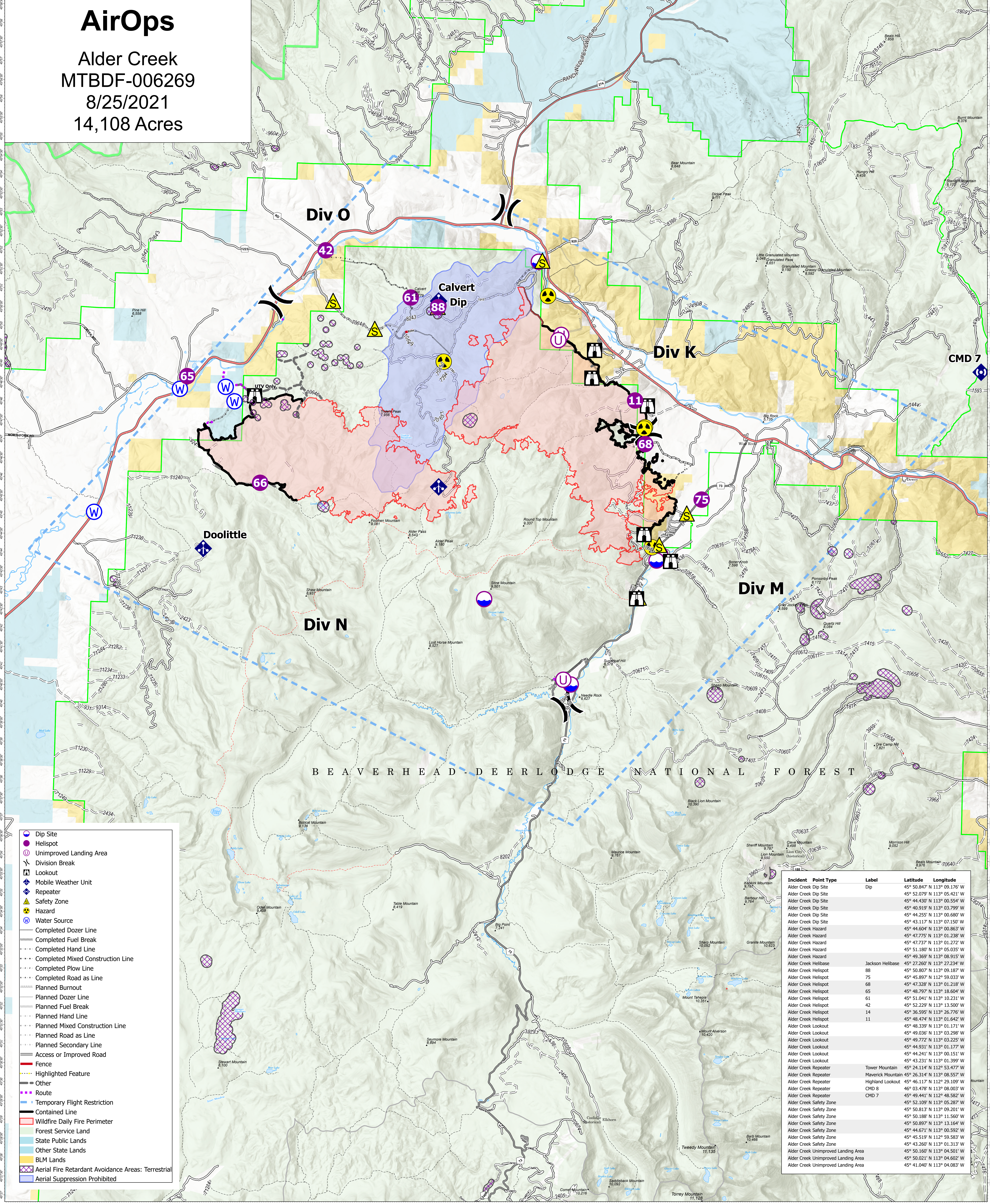


# AirOps

Alder Creek  
MTBDF-006269  
8/25/2021  
14,108 Acres

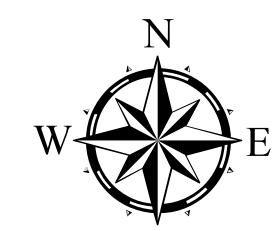


- Dip Site
- Helispot
- Unimproved Landing Area
- Division Break
- Lookout
- Mobile Weather Unit
- Repeater
- Safety Zone
- Hazard
- Water Source
- Completed Dozer Line
- Completed Fuel Break
- Completed Hand Line
- Completed Mixed Construction Line
- Completed Plow Line
- Completed Road as Line
- Planned Burnout
- Planned Dozer Line
- Planned Fuel Break
- Planned Hand Line
- Planned Mixed Construction Line
- Planned Road as Line
- Planned Secondary Line
- Access or Improved Road
- Fence
- Highlighted Feature
- Other
- Route
- Temporary Flight Restriction
- Contained Line
- Wildfire Daily Fire Perimeter
- Forest Service Land
- State Public Lands
- Other State Lands
- BLM Lands
- Aerial Fire Retardant Avoidance Areas: Terrestrial
- Aerial Suppression Prohibited

Incident Point Type	Label	Latitude	Longitude
Alder Creek Dip Site	Dip	45° 50.847' N 113° 09.176' W	
Alder Creek Dip Site		45° 52.079' N 113° 05.421' W	
Alder Creek Dip Site		45° 44.430' N 113° 00.554' W	
Alder Creek Dip Site		45° 40.919' N 113° 03.799' W	
Alder Creek Dip Site		45° 44.255' N 113° 06.680' W	
Alder Creek Dip Site		45° 43.117' N 113° 07.150' W	
Alder Creek Hazard		45° 44.604' N 113° 00.863' W	
Alder Creek Hazard		45° 47.775' N 113° 01.238' W	
Alder Creek Hazard		45° 47.737' N 113° 01.272' W	
Alder Creek Hazard		45° 51.180' N 113° 05.035' W	
Alder Creek Hazard		45° 49.369' N 113° 08.915' W	
Alder Creek Helibase	Jackson Helibase	45° 27.260' N 113° 27.234' W	
Alder Creek Helispot	88	45° 50.807' N 113° 09.187' W	
Alder Creek Helispot	75	45° 45.897' N 112° 59.023' W	
Alder Creek Helispot	68	45° 47.328' N 113° 01.218' W	
Alder Creek Helispot	65	45° 48.797' N 113° 18.604' W	
Alder Creek Helispot	61	45° 51.041' N 113° 10.231' W	
Alder Creek Helispot	42	45° 52.229' N 113° 13.500' W	
Alder Creek Helispot	14	45° 36.595' N 113° 26.776' W	
Alder Creek Helispot	11	45° 48.474' N 113° 01.642' W	
Alder Creek Lookout		45° 48.339' N 113° 01.171' W	
Alder Creek Lookout		45° 49.036' N 113° 03.298' W	
Alder Creek Lookout		45° 49.772' N 113° 03.225' W	
Alder Creek Lookout		45° 44.931' N 113° 01.177' W	
Alder Creek Lookout		45° 44.241' N 113° 01.151' W	
Alder Creek Lookout		45° 43.231' N 113° 01.319' W	
Alder Creek Repeater	Tower Mountain	45° 24.114' N 112° 53.477' W	
Alder Creek Repeater	Maverick Mountain	45° 26.314' N 113° 08.557' W	
Alder Creek Repeater	Highland Lookout	45° 46.117' N 112° 29.109' W	
Alder Creek Repeater	CMD 8	46° 03.478' N 113° 08.003' W	
Alder Creek Repeater	CMD 7	45° 49.441' N 112° 48.582' W	
Alder Creek Safety Zone		45° 52.109' N 113° 05.287' W	
Alder Creek Safety Zone		45° 50.813' N 113° 09.201' W	
Alder Creek Safety Zone		45° 50.188' N 113° 11.560' W	
Alder Creek Safety Zone		45° 50.897' N 113° 13.164' W	
Alder Creek Safety Zone		45° 44.671' N 113° 00.592' W	
Alder Creek Safety Zone		45° 45.519' N 112° 59.583' W	
Alder Creek Safety Zone		45° 43.260' N 113° 01.313' W	
Alder Creek Unimproved Landing Area		45° 50.160' N 113° 04.501' W	
Alder Creek Unimproved Landing Area		45° 50.021' N 113° 04.602' W	
Alder Creek Unimproved Landing Area		45° 41.040' N 113° 04.083' W	

### Flight Restriction Information

Alder Creek - 1/7629- 12,500ft ceiling  
Trail Creek - 1/7630 - 11,500ft ceiling  
Black Mountain - 1/1730 - 10,500ft ceiling



Fire perimeter updated from  
Acres from IR on 08/24/2021 2242 MDT

