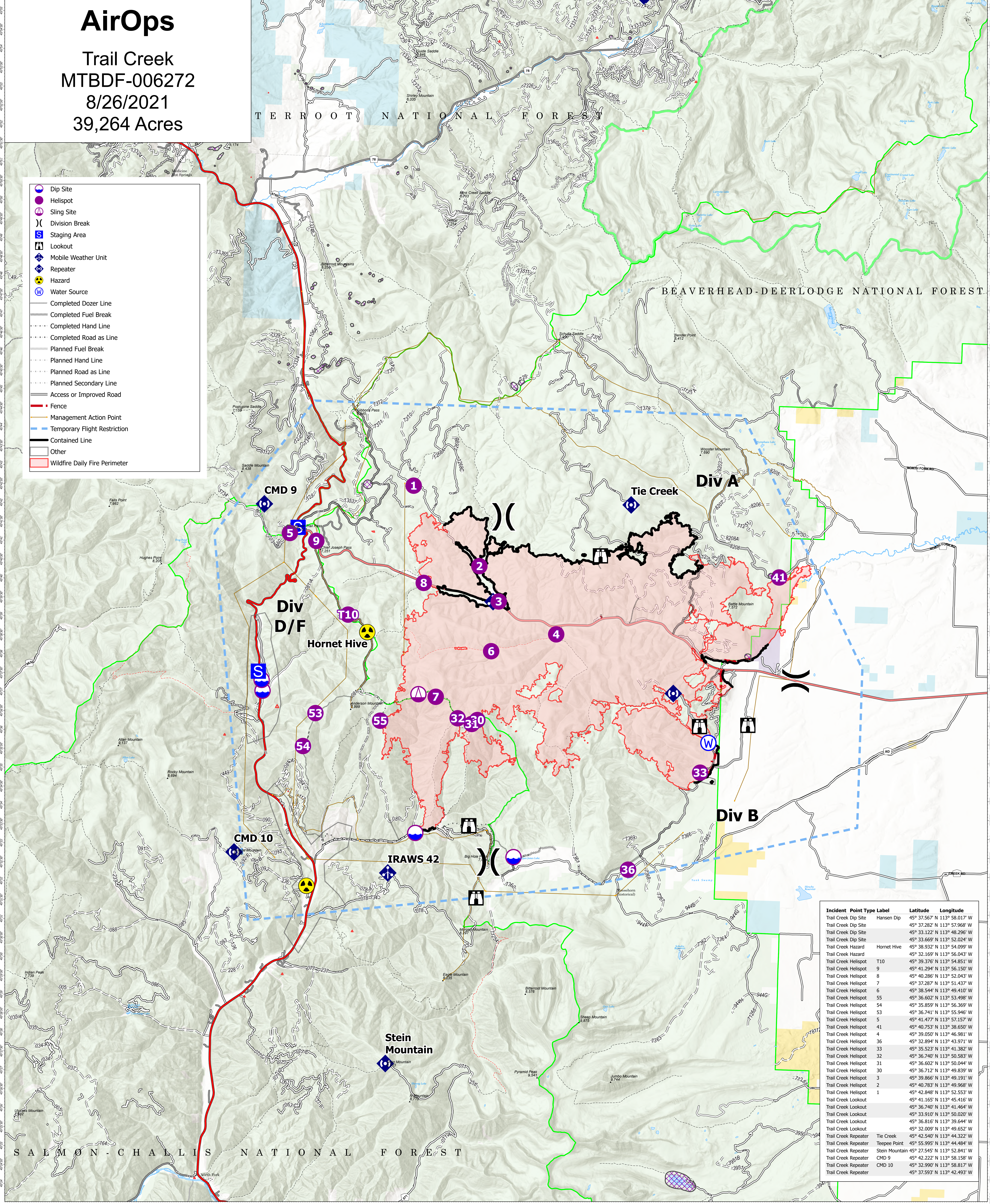


# AirOps

Trail Creek  
MTBDF-006272  
8/26/2021  
39,264 Acres

- Dip Site
- Helispot
- Sling Site
- Division Break
- Staging Area
- Lookout
- Mobile Weather Unit
- Repeater
- Hazard
- Water Source
- Completed Dozer Line
- Completed Fuel Break
- Completed Hand Line
- Completed Road as Line
- Planned Fuel Break
- Planned Hand Line
- Planned Road as Line
- Planned Secondary Line
- Access or Improved Road
- Fence
- Management Action Point
- Temporary Flight Restriction
- Contained Line
- Other
- Wildfire Daily Fire Perimeter



Incident Point Type Label	Latitude	Longitude
Trail Creek Dip Site	45° 37.567' N	113° 58.017' W
Trail Creek Dip Site	45° 37.282' N	113° 57.968' W
Trail Creek Dip Site	45° 33.122' N	113° 48.296' W
Trail Creek Dip Site	45° 33.669' N	113° 52.024' W
Trail Creek Hazard	45° 38.932' N	113° 54.099' W
Trail Creek Hazard	45° 32.169' N	113° 56.043' W
Trail Creek Helispot T10	45° 39.376' N	113° 54.851' W
Trail Creek Helispot 9	45° 41.294' N	113° 56.150' W
Trail Creek Helispot 8	45° 40.286' N	113° 52.043' W
Trail Creek Helispot 7	45° 37.287' N	113° 51.437' W
Trail Creek Helispot 6	45° 38.544' N	113° 49.410' W
Trail Creek Helispot 55	45° 36.602' N	113° 53.498' W
Trail Creek Helispot 54	45° 35.859' N	113° 56.369' W
Trail Creek Helispot 53	45° 36.741' N	113° 55.946' W
Trail Creek Helispot 5	45° 41.477' N	113° 57.157' W
Trail Creek Helispot 41	45° 40.753' N	113° 38.650' W
Trail Creek Helispot 4	45° 39.050' N	113° 46.981' W
Trail Creek Helispot 36	45° 32.894' N	113° 43.971' W
Trail Creek Helispot 33	45° 35.523' N	113° 41.382' W
Trail Creek Helispot 32	45° 36.740' N	113° 50.583' W
Trail Creek Helispot 31	45° 36.602' N	113° 50.044' W
Trail Creek Helispot 30	45° 36.712' N	113° 49.839' W
Trail Creek Helispot 3	45° 39.866' N	113° 49.191' W
Trail Creek Helispot 2	45° 40.783' N	113° 49.968' W
Trail Creek Helispot 1	45° 42.848' N	113° 52.553' W
Trail Creek Lookout	45° 41.165' N	113° 45.416' W
Trail Creek Lookout	45° 36.740' N	113° 41.464' W
Trail Creek Lookout	45° 35.816' N	113° 39.620' W
Trail Creek Lookout	45° 32.009' N	113° 49.652' W
Trail Creek Repeater	45° 42.540' N	113° 44.322' W
Trail Creek Repeater Teepee Point	45° 55.995' N	113° 44.484' W
Trail Creek Repeater Stein Mountain	45° 27.545' N	113° 52.841' W
Trail Creek Repeater CMD 9	45° 42.222' N	113° 58.158' W
Trail Creek Repeater CMD 10	45° 32.990' N	113° 58.817' W
Trail Creek Repeater	45° 37.593' N	113° 42.493' W

Flight Restriction Information  
 Alder Creek - 1/7629- 12,500ft ceiling  
 Trail Creek - 1/7630 - 11,500ft ceiling  
 Black Mountain - 1/1730 - 10,500ft ceiling



NR Team 5  
8/25/2021 2024  
North American 1983 Datum. LatLong Grid

Fire perimeter updated from  
Acres from IR on 08/24/2021 2301 MDT

Scale: 1:54,688  
1 inch equals 1 mile