

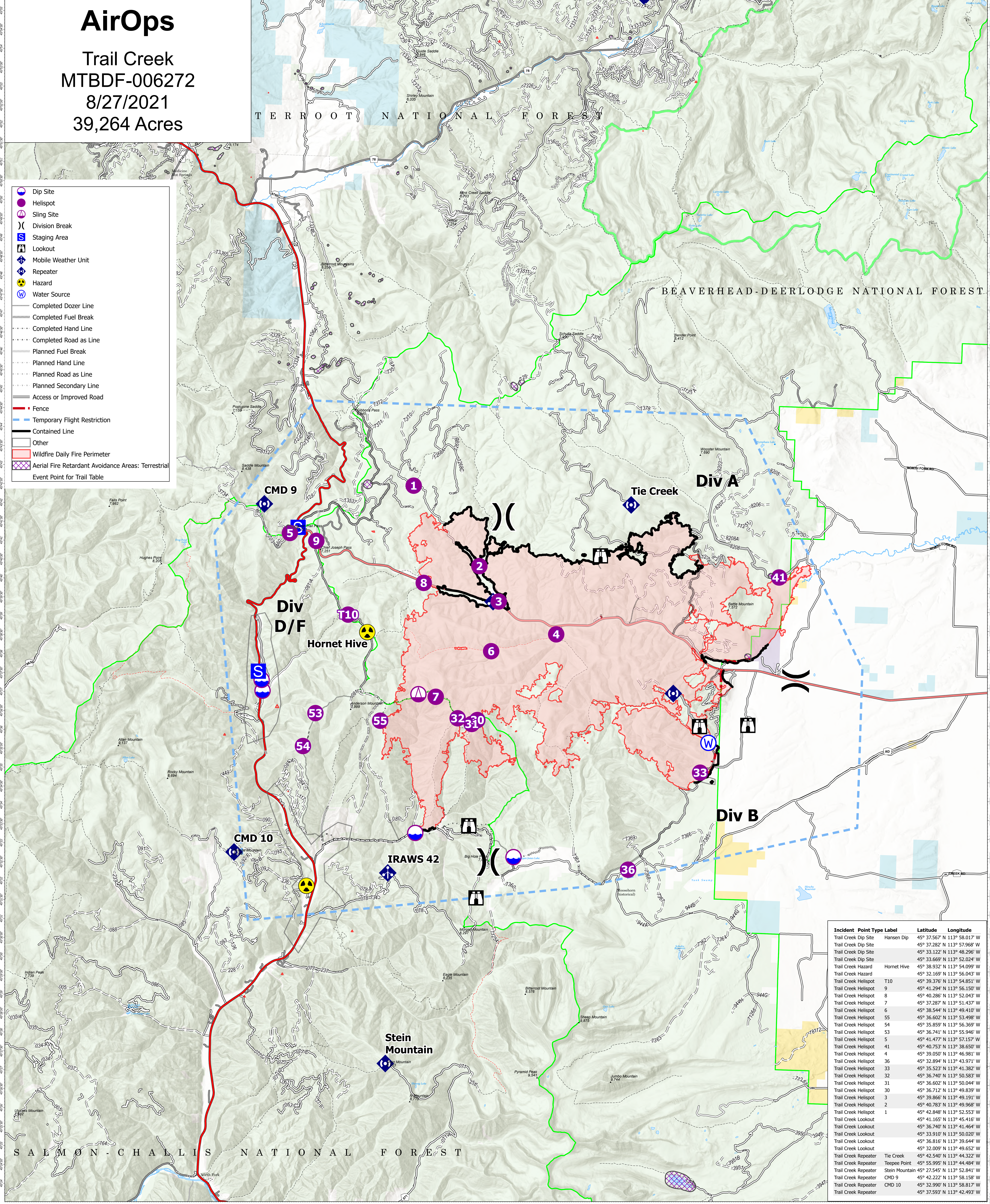
AirOps

Trail Creek
MTBDF-006272
8/27/2021
39,264 Acres

TERROOT NATIONAL FOREST

BEAVERHEAD-DEERLODGE NATIONAL FOREST

- Dip Site
- Helispot
- Sling Site
- Division Break
- Staging Area
- Lookout
- Mobile Weather Unit
- Repeater
- Hazard
- Water Source
- Completed Dozer Line
- Completed Fuel Break
- Completed Hand Line
- Completed Road as Line
- Planned Fuel Break
- Planned Hand Line
- Planned Road as Line
- Planned Secondary Line
- Access or Improved Road
- Fence
- Temporary Flight Restriction
- Contained Line
- Other
- Wildfire Daily Fire Perimeter
- Aerial Fire Retardant Avoidance Areas: Terrestrial
- Event Point for Trail Table



Incident	Point Type Label	Latitude	Longitude
Trail Creek Dip Site	Hansen Dip	45° 37.567' N 113° 58.017' W	
Trail Creek Dip Site		45° 37.282' N 113° 57.968' W	
Trail Creek Dip Site		45° 33.122' N 113° 48.296' W	
Trail Creek Dip Site		45° 33.669' N 113° 52.024' W	
Trail Creek Hazard	Hornet Hive	45° 38.932' N 113° 54.099' W	
Trail Creek Helispot	T10	45° 39.376' N 113° 54.851' W	
Trail Creek Helispot	9	45° 41.294' N 113° 56.150' W	
Trail Creek Helispot	8	45° 40.286' N 113° 52.043' W	
Trail Creek Helispot	7	45° 37.287' N 113° 51.437' W	
Trail Creek Helispot	6	45° 38.544' N 113° 49.410' W	
Trail Creek Helispot	55	45° 36.602' N 113° 53.498' W	
Trail Creek Helispot	54	45° 35.859' N 113° 56.369' W	
Trail Creek Helispot	53	45° 36.741' N 113° 55.946' W	
Trail Creek Helispot	5	45° 41.477' N 113° 57.157' W	
Trail Creek Helispot	41	45° 40.753' N 113° 38.650' W	
Trail Creek Helispot	4	45° 39.059' N 113° 46.981' W	
Trail Creek Helispot	36	45° 35.894' N 113° 43.971' W	
Trail Creek Helispot	33	45° 35.523' N 113° 41.382' W	
Trail Creek Helispot	32	45° 36.740' N 113° 50.583' W	
Trail Creek Helispot	31	45° 36.602' N 113° 50.044' W	
Trail Creek Helispot	30	45° 36.712' N 113° 49.839' W	
Trail Creek Helispot	3	45° 39.866' N 113° 49.191' W	
Trail Creek Helispot	2	45° 40.783' N 113° 49.968' W	
Trail Creek Helispot	1	45° 42.848' N 113° 52.553' W	
Trail Creek Lookout		45° 41.165' N 113° 45.416' W	
Trail Creek Lookout		45° 36.740' N 113° 41.464' W	
Trail Creek Lookout		45° 33.910' N 113° 50.020' W	
Trail Creek Lookout		45° 36.816' N 113° 39.644' W	
Trail Creek Lookout		45° 32.009' N 113° 49.652' W	
Trail Creek Repeater	Tie Creek	45° 42.540' N 113° 44.322' W	
Trail Creek Repeater	Teespee Point	45° 55.995' N 113° 44.484' W	
Trail Creek Repeater	Stein Mountain	45° 27.545' N 113° 52.841' W	
Trail Creek Repeater	CMD 9	45° 42.222' N 113° 58.158' W	
Trail Creek Repeater	CMD 10	45° 32.990' N 113° 58.817' W	
Trail Creek Repeater		45° 37.593' N 113° 42.493' W	

Flight Restriction Information
 Alder Creek - 1/7629- 12,500ft ceiling
 Trail Creek - 1/7630 - 11,500ft ceiling
 Black Mountain - 1/1730 - 10,500ft ceiling



NR Team 5
8/26/2021 1958
North American 1983 Datum. LatLong Grid

Fire perimeter updated from
Acres from IR on 08/24/2021 2301 MDT

Scale: 1:54,688
1 inch equals 1 mile