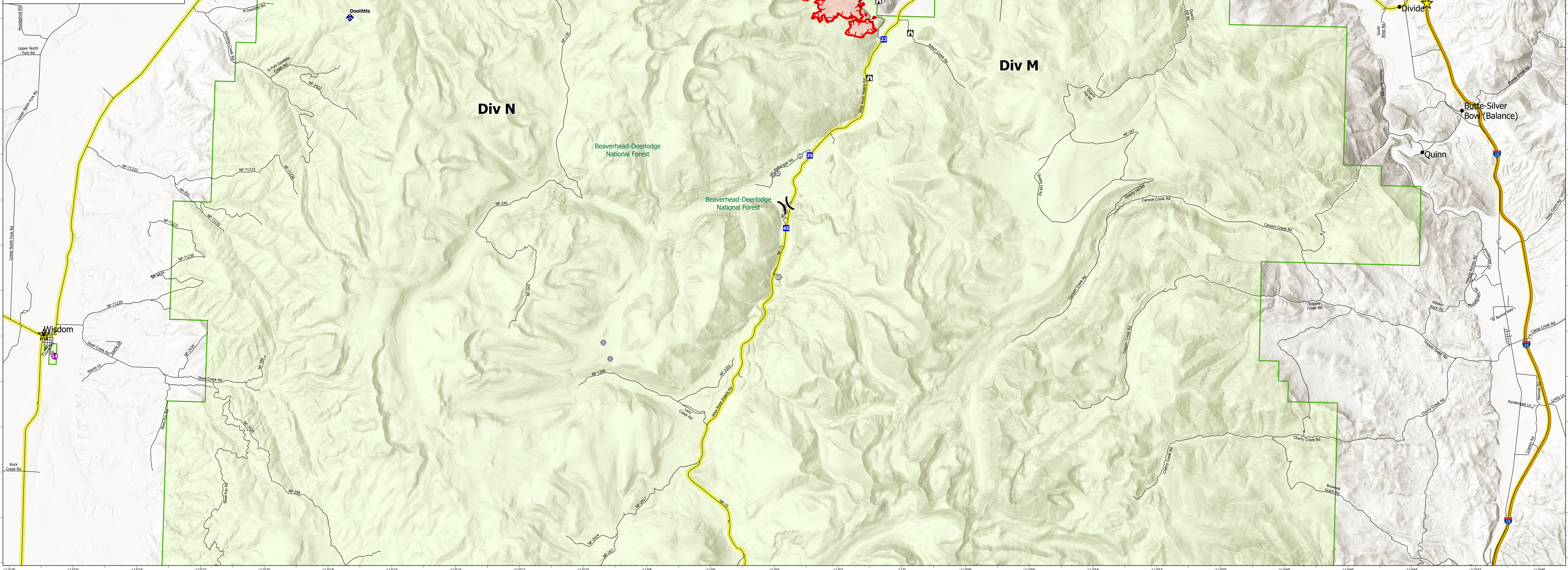


Incident	Point Type Label	Latitude	Longitude
Alder Creek Dip Site		45° 52.079' N 113° 05.421' W	
Alder Creek Dip Site		45° 44.430' N 113° 00.554' W	
Alder Creek Dip Site		45° 40.919' N 113° 03.799' W	
Alder Creek Dip Site		45° 44.255' N 113° 00.680' W	
Alder Creek Dip Site		45° 43.117' N 113° 07.150' W	
Alder Creek Dip Site	Dip	45° 50.847' N 113° 09.176' W	
Alder Creek Drop Point	11	45° 48.317' N 113° 01.348' W	
Alder Creek Drop Point	12	45° 48.354' N 113° 01.571' W	
Alder Creek Drop Point	13	45° 49.286' N 113° 01.635' W	
Alder Creek Drop Point	14	45° 49.235' N 113° 03.084' W	
Alder Creek Drop Point	15	45° 49.526' N 113° 03.444' W	
Alder Creek Drop Point	16	45° 49.549' N 113° 03.495' W	
Alder Creek Drop Point	17	45° 49.878' N 113° 03.976' W	
Alder Creek Drop Point	18	45° 50.194' N 113° 04.561' W	
Alder Creek Drop Point	19	45° 47.665' N 113° 01.347' W	
Alder Creek Drop Point	21	45° 45.601' N 112° 59.992' W	
Alder Creek Drop Point	22	45° 44.867' N 113° 00.985' W	
Alder Creek Drop Point	23	45° 50.431' N 113° 05.118' W	
Alder Creek Drop Point	24	45° 53.131' N 113° 10.064' W	
Alder Creek Drop Point	25	45° 51.002' N 113° 04.143' W	
Alder Creek Drop Point	26	45° 51.005' N 113° 05.738' W	
Alder Creek Drop Point	27	45° 51.345' N 113° 05.914' W	
Alder Creek Drop Point	28	45° 51.457' N 113° 06.190' W	
Alder Creek Drop Point	29	45° 52.312' N 113° 05.124' W	
Alder Creek Drop Point	35	45° 41.488' N 113° 03.218' W	
Alder Creek Drop Point	37	45° 49.631' N 113° 08.636' W	
Alder Creek Drop Point	38	45° 50.787' N 113° 09.184' W	
Alder Creek Drop Point	39	45° 50.429' N 113° 10.438' W	
Alder Creek Drop Point	42	45° 52.300' N 113° 13.576' W	
Alder Creek Drop Point	43	45° 50.797' N 113° 05.682' W	
Alder Creek Drop Point	45	45° 39.873' N 113° 03.902' W	
Alder Creek Drop Point	61	45° 51.054' N 113° 10.262' W	
Alder Creek Drop Point	62	45° 50.041' N 113° 10.802' W	
Alder Creek Drop Point	63	45° 50.874' N 113° 13.199' W	
Alder Creek Drop Point	64	45° 50.623' N 113° 15.341' W	
Alder Creek Drop Point	65	45° 48.456' N 113° 18.876' W	
Alder Creek Drop Point	A10	45° 46.467' N 113° 00.025' W	
Alder Creek Drop Point	A20	45° 47.328' N 113° 01.218' W	
Alder Creek Drop Point	A30	45° 53.271' N 113° 03.131' W	
Alder Creek Hazard		45° 44.604' N 113° 00.863' W	
Alder Creek Hazard		45° 47.775' N 113° 01.238' W	
Alder Creek Hazard		45° 47.737' N 113° 01.272' W	
Alder Creek Hazard		45° 51.180' N 113° 05.035' W	
Alder Creek Hazard		45° 49.369' N 113° 08.915' W	
Alder Creek Helibase	Jackson Helibase	45° 27.260' N 113° 27.234' W	
Alder Creek Helispot	11	45° 48.474' N 113° 01.642' W	
Alder Creek Helispot	14	45° 36.595' N 113° 26.776' W	
Alder Creek Helispot	42	45° 52.229' N 113° 13.500' W	
Alder Creek Helispot	61	45° 51.041' N 113° 10.231' W	
Alder Creek Helispot	65	45° 48.757' N 113° 18.604' W	
Alder Creek Helispot	68	45° 47.238' N 113° 01.218' W	
Alder Creek Helispot	75	45° 45.897' N 112° 59.033' W	
Alder Creek Helispot	88	45° 50.807' N 113° 09.187' W	
Alder Creek Lookout		45° 48.339' N 113° 01.171' W	
Alder Creek Lookout		45° 49.036' N 113° 03.298' W	
Alder Creek Lookout		45° 49.772' N 113° 03.225' W	
Alder Creek Lookout		45° 44.931' N 113° 01.177' W	
Alder Creek Lookout		45° 44.241' N 113° 00.151' W	
Alder Creek Lookout		45° 43.231' N 113° 01.399' W	
Alder Creek Safety Zone		45° 52.109' N 113° 05.287' W	
Alder Creek Safety Zone		45° 50.813' N 113° 09.201' W	
Alder Creek Safety Zone		45° 50.188' N 113° 11.560' W	
Alder Creek Safety Zone		45° 50.897' N 113° 13.164' W	
Alder Creek Safety Zone		45° 44.671' N 113° 00.592' W	
Alder Creek Safety Zone		45° 45.519' N 112° 59.583' W	
Alder Creek Safety Zone		45° 43.260' N 113° 01.313' W	



Alder Creek, Christensen
Transportation Map

Alder Creek 14,108 Acres
Christensen 11,109 Acres
Trail Creek 39,264 Acres

Day Operational Period 8/27/2021

NAD 1983 UTM Zone 12N
Map Created 8/26/2021 10:40 by MR Team 5

Scale: 1:54,167

0 1 2 4 Miles
0 1 2 4 Kilometers

● Helispot
■ Drop Point
 Lookout
 Bridge
● Water Source
 Contained Line
 State Boundary
- - - Division Break
■ Camp
 Gate
♦ Mobile Weather Unit
- - - Fire Edge
 Wildfire Daily Fire Perimeter

