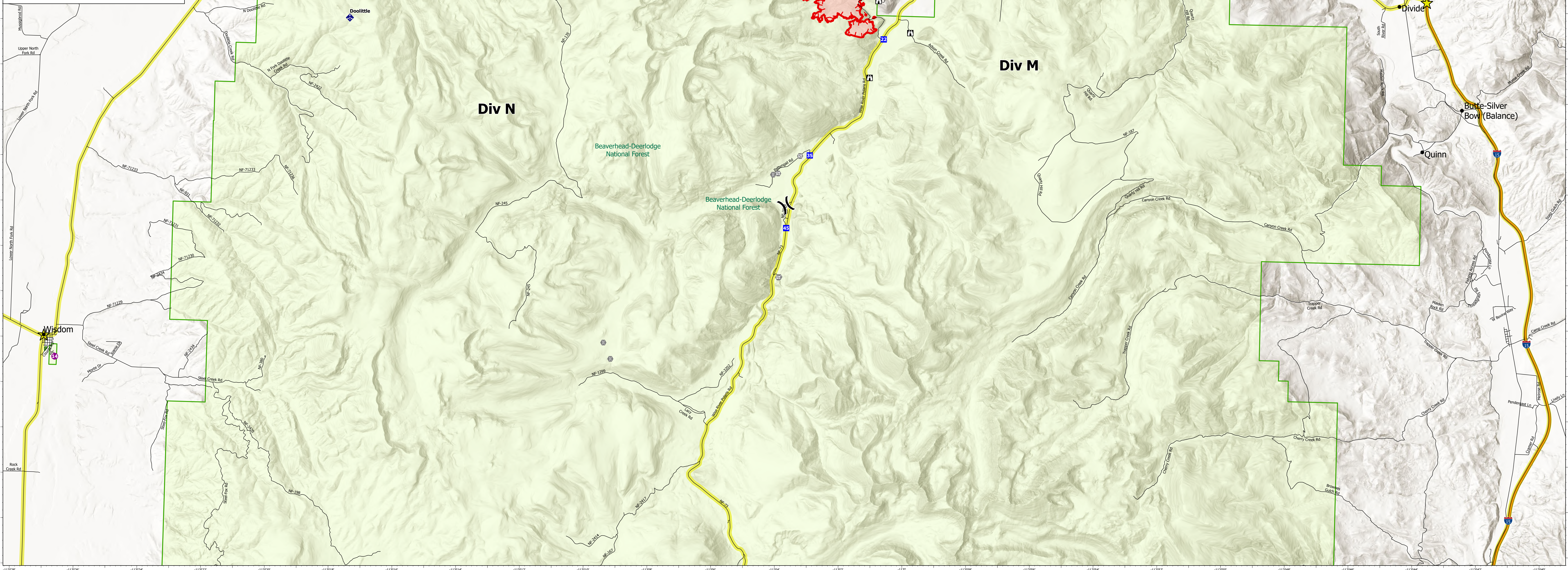


Incident	Point Type Label	Latitude	Longitude
Alder Creek Dip Site		45° 52.079' N 113° 05.400' W	
Alder Creek Dip Site		45° 44.429' N 113° 00.553' W	
Alder Creek Dip Site		45° 40.918' N 113° 03.798' W	
Alder Creek Dip Site		45° 44.255' N 113° 00.680' W	
Alder Creek Dip Site		45° 43.116' N 113° 07.149' W	
Alder Creek Dip Site	Dip	45° 50.847' N 113° 09.175' W	
Alder Creek Drop Point	11	45° 48.317' N 113° 01.347' W	
Alder Creek Drop Point	12	45° 48.353' N 113° 01.570' W	
Alder Creek Drop Point	13	45° 49.286' N 113° 01.635' W	
Alder Creek Drop Point	14	45° 49.235' N 113° 03.083' W	
Alder Creek Drop Point	15	45° 49.526' N 113° 03.443' W	
Alder Creek Drop Point	16	45° 49.548' N 113° 03.494' W	
Alder Creek Drop Point	17	45° 49.878' N 113° 03.976' W	
Alder Creek Drop Point	18	45° 50.194' N 113° 04.561' W	
Alder Creek Drop Point	19	45° 47.665' N 113° 01.347' W	
Alder Creek Drop Point	21	45° 45.601' N 112° 59.991' W	
Alder Creek Drop Point	22	45° 44.867' N 113° 00.964' W	
Alder Creek Drop Point	23	45° 50.431' N 113° 05.117' W	
Alder Creek Drop Point	24	45° 53.131' N 113° 10.663' W	
Alder Creek Drop Point	25	45° 51.002' N 113° 04.142' W	
Alder Creek Drop Point	26	45° 51.004' N 113° 05.737' W	
Alder Creek Drop Point	27	45° 51.345' N 113° 05.913' W	
Alder Creek Drop Point	28	45° 51.457' N 113° 06.189' W	
Alder Creek Drop Point	29	45° 52.312' N 113° 05.123' W	
Alder Creek Drop Point	35	45° 41.488' N 113° 03.217' W	
Alder Creek Drop Point	37	45° 49.630' N 113° 08.635' W	
Alder Creek Drop Point	38	45° 50.787' N 113° 09.183' W	
Alder Creek Drop Point	39	45° 50.429' N 113° 10.438' W	
Alder Creek Drop Point	42	45° 52.300' N 113° 13.575' W	
Alder Creek Drop Point	43	45° 50.796' N 113° 05.681' W	
Alder Creek Drop Point	45	45° 39.873' N 113° 03.901' W	
Alder Creek Drop Point	61	45° 51.053' N 113° 10.261' W	
Alder Creek Drop Point	62	45° 50.040' N 113° 10.801' W	
Alder Creek Drop Point	63	45° 50.873' N 113° 13.188' W	
Alder Creek Drop Point	64	45° 50.623' N 113° 15.340' W	
Alder Creek Drop Point	65	45° 48.456' N 113° 18.875' W	
Alder Creek Drop Point	A10	45° 46.466' N 113° 00.024' W	
Alder Creek Drop Point	A20	45° 47.328' N 113° 01.218' W	
Alder Creek Drop Point	A30	45° 53.270' N 113° 03.131' W	
Alder Creek Hazard		45° 44.603' N 113° 00.862' W	
Alder Creek Hazard		45° 47.774' N 113° 01.238' W	
Alder Creek Hazard		45° 47.727' N 113° 01.271' W	
Alder Creek Hazard		45° 51.180' N 113° 05.035' W	
Alder Creek Hazard		45° 49.368' N 113° 08.914' W	
Alder Creek Helibase	Jackson Helibase	45° 27.260' N 113° 27.233' W	
Alder Creek Helispot	11	45° 48.474' N 113° 01.642' W	
Alder Creek Helispot	14	45° 36.595' N 113° 26.775' W	
Alder Creek Helispot	42	45° 52.228' N 113° 13.499' W	
Alder Creek Helispot	61	45° 51.041' N 113° 10.230' W	
Alder Creek Helispot	65	45° 48.757' N 113° 18.603' W	
Alder Creek Helispot	68	45° 47.238' N 113° 01.218' W	
Alder Creek Helispot	75	45° 45.897' N 112° 59.032' W	
Alder Creek Helispot	88	45° 50.807' N 113° 09.187' W	
Alder Creek Lookout		45° 48.339' N 113° 01.170' W	
Alder Creek Lookout		45° 49.036' N 113° 03.298' W	
Alder Creek Lookout		45° 49.772' N 113° 03.225' W	
Alder Creek Lookout		45° 44.931' N 113° 01.177' W	
Alder Creek Lookout		45° 44.241' N 113° 00.151' W	
Alder Creek Lookout		45° 43.231' N 113° 01.398' W	
Alder Creek Safety Zone		45° 52.108' N 113° 05.286' W	
Alder Creek Safety Zone		45° 50.812' N 113° 09.200' W	
Alder Creek Safety Zone		45° 50.188' N 113° 11.599' W	
Alder Creek Safety Zone		45° 50.897' N 113° 13.163' W	
Alder Creek Safety Zone		45° 44.671' N 113° 00.591' W	
Alder Creek Safety Zone		45° 45.519' N 112° 59.582' W	
Alder Creek Safety Zone		45° 43.260' N 113° 01.312' W	



Alder Creek, Christensen
Transportation Map

Alder Creek 14,112 Acres
Christensen 11,120 Acres
Trail Creek 39,305 Acres

Scale: 1:54,167

- Helispot
- Drop Point
- ⌘ Lookout
- ⊕ Bridge
- ⊕ Water Source
- Contained Line
- State Boundary
- ⌘ Division Break
- ⊕ Camp
- ⊕ Gate
- ⊕ Mobile Weather Unit
- Fire Edge
- Wildfire Daily Fire Perimeter



Day Operational Period 8/28/2021

NAD 1983 UTM Zone 12N
Map Created 8/17/2021 9:43 PM by M. Sam S.