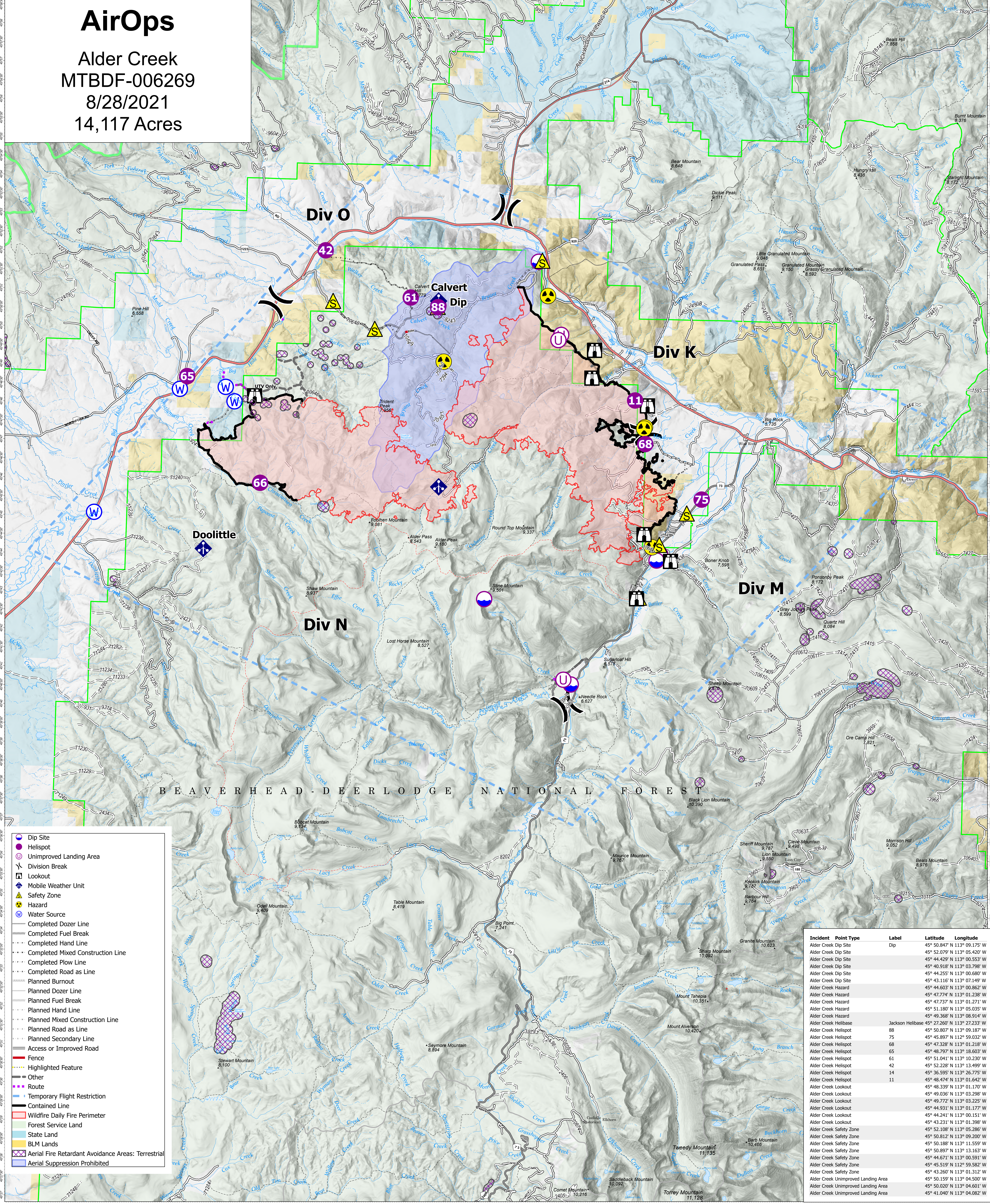


# AirOps

Alder Creek  
MTBDF-006269  
8/28/2021  
14,117 Acres



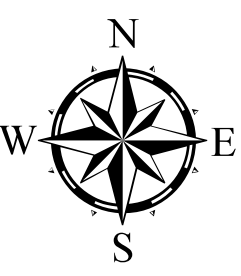
BEAVERHEAD-DEERLODGE NATIONAL FOREST

- Dip Site
- Helispot
- Unimproved Landing Area
- Division Break
- Lookout
- Mobile Weather Unit
- Safety Zone
- Hazard
- Water Source
- Completed Dozer Line
- Completed Fuel Break
- Completed Hand Line
- Completed Mixed Construction Line
- Completed Plow Line
- Completed Road as Line
- Planned Burnout
- Planned Dozer Line
- Planned Fuel Break
- Planned Hand Line
- Planned Mixed Construction Line
- Planned Road as Line
- Planned Secondary Line
- Access or Improved Road
- Fence
- Highlighted Feature
- Other
- Route
- Temporary Flight Restriction
- Contained Line
- Wildfire Daily Fire Perimeter
- Forest Service Land
- State Land
- BLM Lands
- Aerial Fire Retardant Avoidance Areas: Terrestrial
- Aerial Suppression Prohibited

Incident	Point Type	Label	Latitude	Longitude
Alder Creek Dip Site	Dip		45° 50.847' N 113° 09.175' W	
Alder Creek Dip Site	Dip		45° 52.079' N 113° 05.420' W	
Alder Creek Dip Site	Dip		45° 44.429' N 113° 00.553' W	
Alder Creek Dip Site	Dip		45° 40.918' N 113° 03.798' W	
Alder Creek Dip Site	Dip		45° 44.255' N 113° 00.680' W	
Alder Creek Dip Site	Dip		45° 43.116' N 113° 07.149' W	
Alder Creek Hazard	Hazard		45° 44.603' N 113° 00.862' W	
Alder Creek Hazard	Hazard		45° 47.774' N 113° 01.238' W	
Alder Creek Hazard	Hazard		45° 47.737' N 113° 01.271' W	
Alder Creek Hazard	Hazard		45° 51.180' N 113° 05.035' W	
Alder Creek Hazard	Hazard		45° 40.368' N 113° 06.914' W	
Alder Creek Helibase	Helibase	Jackson Helibase	45° 27.260' N 113° 27.233' W	
Alder Creek Helispot	Helispot	75	45° 50.807' N 113° 09.187' W	
Alder Creek Helispot	Helispot	78	45° 45.897' N 112° 59.032' W	
Alder Creek Helispot	Helispot	68	45° 47.328' N 113° 01.218' W	
Alder Creek Helispot	Helispot	65	45° 48.797' N 113° 18.603' W	
Alder Creek Helispot	Helispot	61	45° 51.041' N 113° 10.230' W	
Alder Creek Helispot	Helispot	42	45° 52.228' N 113° 13.499' W	
Alder Creek Helispot	Helispot	14	45° 36.595' N 113° 26.775' W	
Alder Creek Helispot	Helispot	11	45° 48.474' N 113° 01.642' W	
Alder Creek Lookout	Lookout		45° 48.339' N 113° 01.170' W	
Alder Creek Lookout	Lookout		45° 49.036' N 113° 03.298' W	
Alder Creek Lookout	Lookout		45° 49.772' N 113° 03.225' W	
Alder Creek Lookout	Lookout		45° 44.931' N 113° 01.177' W	
Alder Creek Lookout	Lookout		45° 44.241' N 113° 00.151' W	
Alder Creek Lookout	Lookout		45° 43.231' N 113° 01.398' W	
Alder Creek Safety Zone	Safety Zone		45° 50.108' N 113° 05.286' W	
Alder Creek Safety Zone	Safety Zone		45° 50.812' N 113° 09.200' W	
Alder Creek Safety Zone	Safety Zone		45° 50.188' N 113° 11.559' W	
Alder Creek Safety Zone	Safety Zone		45° 50.897' N 113° 13.163' W	
Alder Creek Safety Zone	Safety Zone		45° 44.671' N 113° 00.591' W	
Alder Creek Safety Zone	Safety Zone		45° 45.519' N 112° 59.582' W	
Alder Creek Safety Zone	Safety Zone		45° 43.260' N 113° 01.312' W	
Alder Creek Unimproved Landing Area	Unimproved Landing Area		45° 50.159' N 113° 04.500' W	
Alder Creek Unimproved Landing Area	Unimproved Landing Area		45° 50.020' N 113° 04.601' W	
Alder Creek Unimproved Landing Area	Unimproved Landing Area		45° 41.040' N 113° 04.082' W	

### Flight Restriction Information

Alder Creek - 1/7629 - 12,500ft ceiling  
Trail Creek - 1/7630 - 11,500ft ceiling  
Black Mountain - 1/1730 - 10,500ft ceiling



Fire perimeter updated from Acres from IR on 08/27/2021 2253 MDT

