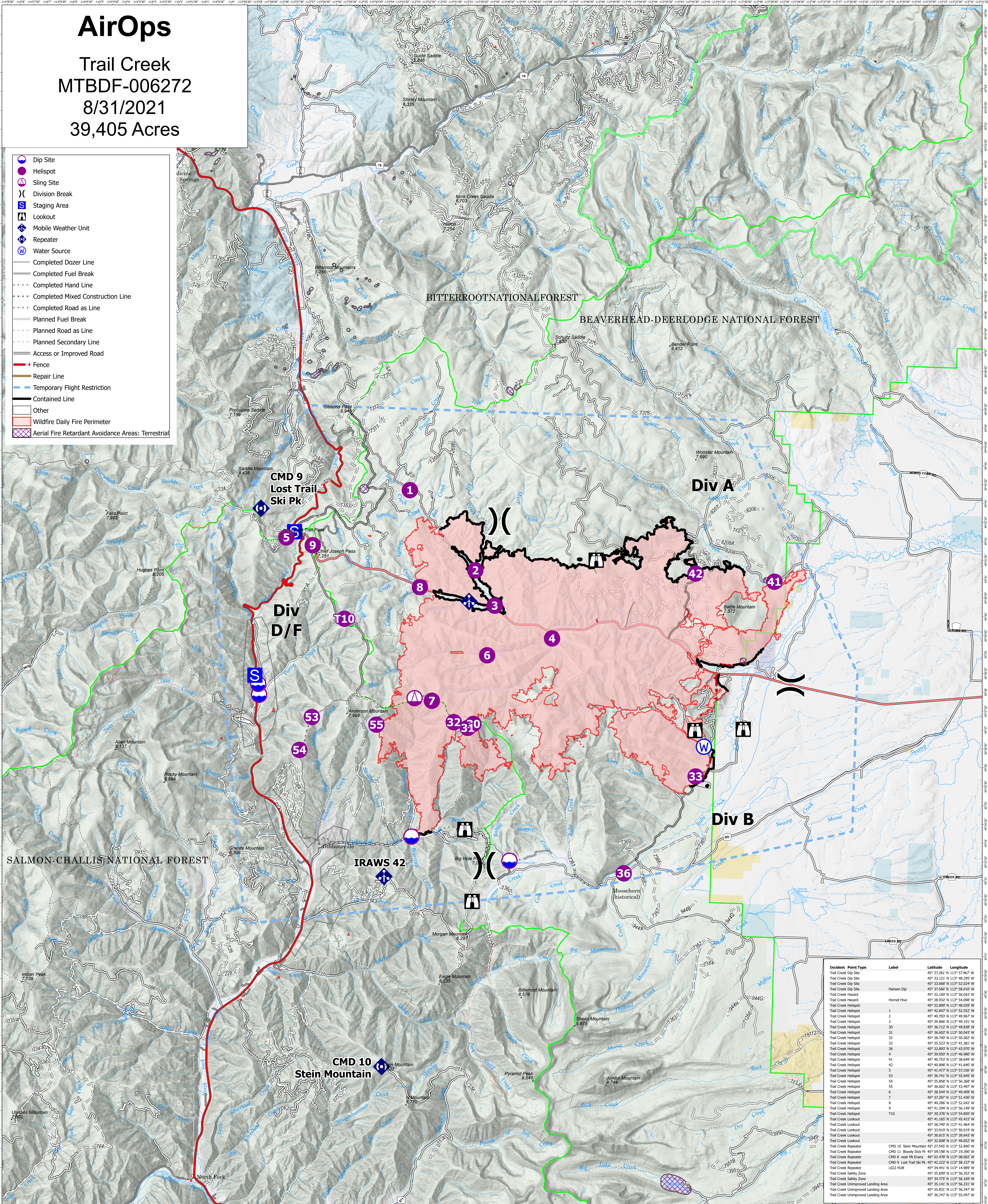


# AirOps

Trail Creek  
MTBDF-006272  
8/31/2021  
39,405 Acres

- Dip Site
- Helispot
- Sling Site
- Division Break
- Staging Area
- Lookout
- Mobile Weather Unit
- Repeater
- Water Source
- Completed Dozer Line
- Completed Fuel Break
- Completed Hand Line
- Completed Mixed Construction Line
- Planned Fuel Break
- Planned Road as Line
- Planned Secondary Line
- Access or Improved Road
- Fence
- Repair Line
- Temporary Flight Restriction
- Contained Line
- Other
- Wildfire Daily Fire Perimeter
- Aerial Fire Retardant Avoidance Areas: Terrestrial



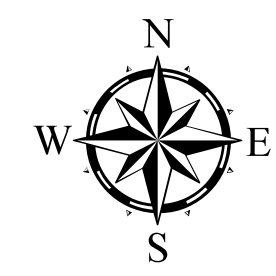
Incident	Point Type	Label	Latitude	Longitude
Trail Creek Dip Site	Dip Site		49° 37.281' N	113° 53.967' W
Trail Creek Dip Site	Dip Site		49° 33.121' N	113° 48.295' W
Trail Creek Dip Site	Dip Site		49° 33.668' N	113° 52.024' W
Trail Creek Dip Site	Dip Site		49° 37.566' N	113° 58.010' W
Trail Creek Hazard	Hazard	Hansen Dip	49° 32.169' N	113° 56.045' W
Trail Creek Hazard	Hazard	Hornet Hive	49° 38.832' N	113° 54.098' W
Trail Creek Helispot	Helispot	1	49° 32.899' N	113° 48.039' W
Trail Creek Helispot	Helispot	2	49° 41.847' N	113° 52.522' W
Trail Creek Helispot	Helispot	3	49° 40.783' N	113° 49.967' W
Trail Creek Helispot	Helispot	4	49° 39.866' N	113° 49.191' W
Trail Creek Helispot	Helispot	30	49° 36.712' N	113° 49.838' W
Trail Creek Helispot	Helispot	31	49° 36.907' N	113° 50.045' W
Trail Creek Helispot	Helispot	32	49° 36.740' N	113° 50.582' W
Trail Creek Helispot	Helispot	33	49° 35.523' N	113° 41.381' W
Trail Creek Helispot	Helispot	36	49° 33.893' N	113° 43.970' W
Trail Creek Helispot	Helispot	4	49° 39.050' N	113° 46.980' W
Trail Creek Helispot	Helispot	41	49° 40.753' N	113° 38.649' W
Trail Creek Helispot	Helispot	42	49° 40.898' N	113° 41.640' W
Trail Creek Helispot	Helispot	5	49° 41.294' N	113° 50.150' W
Trail Creek Helispot	Helispot	53	49° 36.741' N	113° 55.945' W
Trail Creek Helispot	Helispot	54	49° 35.858' N	113° 56.368' W
Trail Creek Helispot	Helispot	55	49° 36.502' N	113° 53.497' W
Trail Creek Helispot	Helispot	6	49° 38.544' N	113° 49.409' W
Trail Creek Helispot	Helispot	7	49° 37.287' N	113° 51.436' W
Trail Creek Helispot	Helispot	8	49° 40.286' N	113° 52.042' W
Trail Creek Helispot	Helispot	9	49° 41.294' N	113° 56.149' W
Trail Creek Helispot	Helispot	10	49° 39.376' N	113° 54.850' W
Trail Creek Lookout	Lookout		49° 41.165' N	113° 45.415' W
Trail Creek Lookout	Lookout		49° 36.740' N	113° 41.464' W
Trail Creek Lookout	Lookout		49° 33.910' N	113° 50.019' W
Trail Creek Lookout	Lookout		49° 36.815' N	113° 39.643' W
Trail Creek Lookout	Lookout		49° 32.008' N	113° 49.652' W
Trail Creek Repeater	Repeater	CMD 10 Stein Mountain	49° 27.845' N	113° 43.940' W
Trail Creek Repeater	Repeater	CMD 11 Bloody Dick Pt.	49° 09.198' N	113° 19.390' W
Trail Creek Repeater	Repeater	CMD 8 near Mt Evans	46° 03.478' N	113° 08.002' W
Trail Creek Repeater	Repeater	CMD 9 Lost Trail Ski Pk	49° 42.222' N	113° 58.157' W
Trail Creek Repeater	Repeater	LO22 Hill	49° 34.441' N	113° 14.989' W
Trail Creek Safety Zone	Safety Zone		49° 35.699' N	113° 56.352' W
Trail Creek Safety Zone	Safety Zone		49° 34.725' N	113° 56.169' W
Trail Creek Unimproved Landing Area	Unimproved Landing Area		49° 35.141' N	113° 56.231' W
Trail Creek Unimproved Landing Area	Unimproved Landing Area		49° 35.831' N	113° 55.347' W
Trail Creek Unimproved Landing Area	Unimproved Landing Area		49° 36.747' N	113° 55.947' W

### Flight Restriction Information

Alder Creek - 1/7629- 12,500ft ceiling  
Trail Creek - 1/7630 - 11,500ft ceiling  
Black Mountain - 1/1730 - 10,500ft ceiling



NR Team 5  
8/30/2021 1840  
North American 1983 Datum. LatLong Grid



Fire perimeter updated from  
Acres from IR on 08/29/2021 2336 MDT

0 1 2 3 4 Miles  
Scale: 1:54,688  
1 inch equals 1 mile