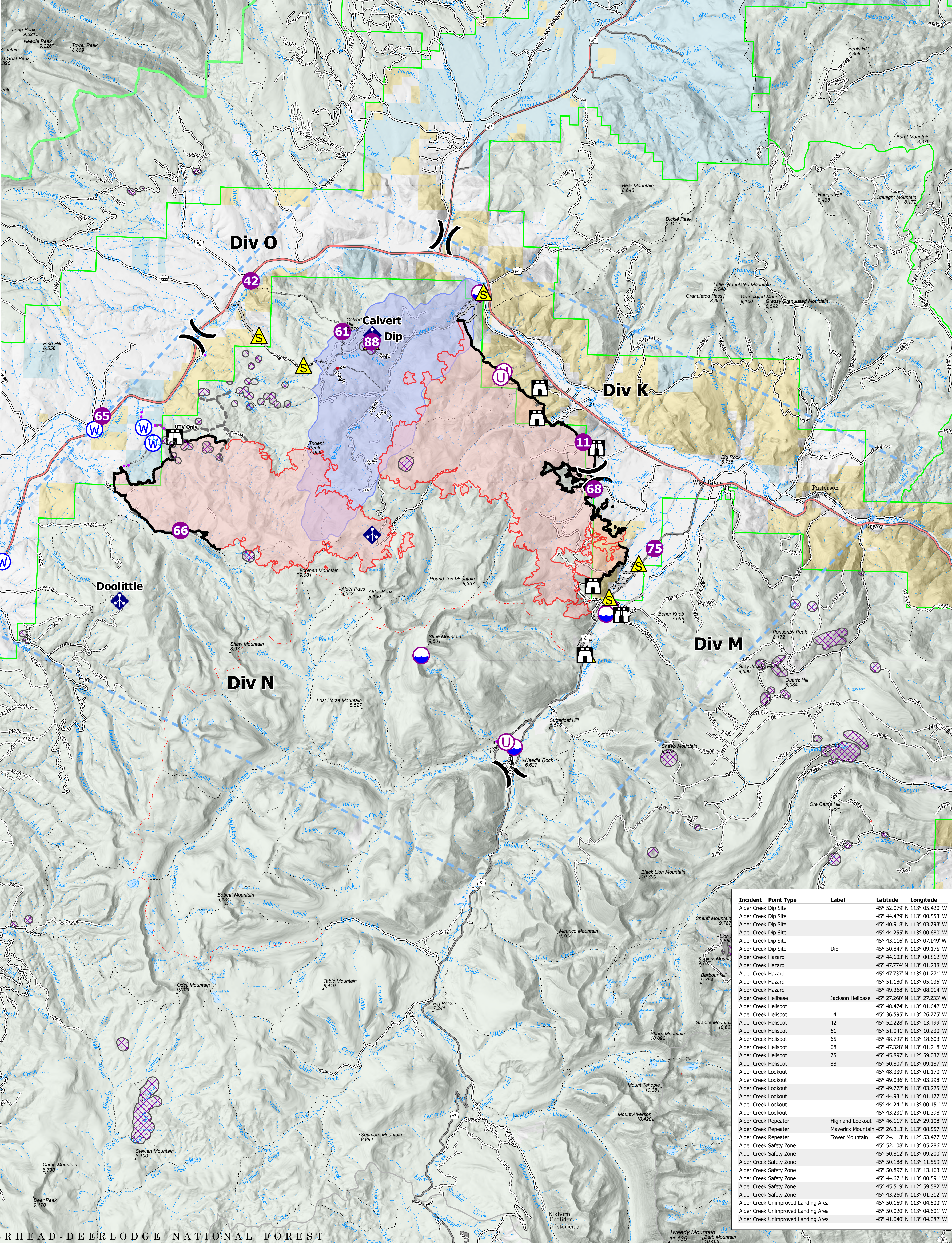


AirOps

Alder Creek
MTBDF-006269
9/01/2021
14,158 Acres

- Dip Site
- Helispot
- Unimproved Landing Area
- Division Break
- Lookout
- Mobile Weather Unit
- Safety Zone
- Water Source
- Completed Dozer Line
- Completed Fuel Break
- Completed Hand Line
- Completed Mixed Construction Line
- Completed Plow Line
- Completed Road as Line
- Planned Burnout
- Planned Dozer Line
- Planned Fuel Break
- Planned Hand Line
- Planned Mixed Construction Line
- Planned Road as Line
- Planned Secondary Line
- Access or Improved Road
- Fence
- Highlighted Feature
- Other
- Route
- Temporary Flight Restriction
- Contained Line
- Wildfire Daily Fire Perimeter
- Forest Service Land
- State Land
- BLM Lands
- Aerial Fire Retardant Avoidance Areas: Terrestrial
- Aerial Suppression Prohibited

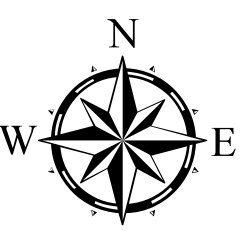


Incident	Point Type	Label	Latitude	Longitude
Alder Creek	Dip Site		45° 52.079' N 113° 05.420' W	
Alder Creek	Dip Site		45° 44.429' N 113° 00.553' W	
Alder Creek	Dip Site		45° 40.918' N 113° 03.798' W	
Alder Creek	Dip Site		45° 44.255' N 113° 00.680' W	
Alder Creek	Dip Site		45° 43.116' N 113° 07.149' W	
Alder Creek	Dip Site		45° 50.847' N 113° 09.175' W	
Alder Creek	Hazard		45° 44.603' N 113° 00.862' W	
Alder Creek	Hazard		45° 47.774' N 113° 01.238' W	
Alder Creek	Hazard		45° 47.737' N 113° 01.271' W	
Alder Creek	Hazard		45° 51.180' N 113° 05.035' W	
Alder Creek	Hazard		45° 49.268' N 113° 08.914' W	
Alder Creek	Hellbase	Jackson Hellbase	45° 27.260' N 113° 27.233' W	
Alder Creek	Helispot	11	45° 48.474' N 113° 01.642' W	
Alder Creek	Helispot	14	45° 36.595' N 113° 26.775' W	
Alder Creek	Helispot	42	45° 52.228' N 113° 13.499' W	
Alder Creek	Helispot	61	45° 51.041' N 113° 10.230' W	
Alder Creek	Helispot	65	45° 48.797' N 113° 18.603' W	
Alder Creek	Helispot	68	45° 47.328' N 113° 01.218' W	
Alder Creek	Helispot	75	45° 45.897' N 112° 59.032' W	
Alder Creek	Helispot	88	45° 50.807' N 113° 09.187' W	
Alder Creek	Lookout		45° 48.239' N 113° 01.170' W	
Alder Creek	Lookout		45° 49.026' N 113° 03.298' W	
Alder Creek	Lookout		45° 49.772' N 113° 03.225' W	
Alder Creek	Lookout		45° 44.931' N 113° 01.177' W	
Alder Creek	Lookout		45° 44.241' N 113° 00.151' W	
Alder Creek	Lookout		45° 43.231' N 113° 01.398' W	
Alder Creek	Repeater	Highland Lookout	45° 46.117' N 112° 29.108' W	
Alder Creek	Repeater	Maverick Mountain	45° 26.317' N 113° 08.557' W	
Alder Creek	Repeater	Tower Mountain	45° 24.113' N 112° 53.477' W	
Alder Creek	Safety Zone		45° 52.108' N 113° 05.286' W	
Alder Creek	Safety Zone		45° 50.812' N 113° 09.200' W	
Alder Creek	Safety Zone		45° 50.188' N 113° 11.559' W	
Alder Creek	Safety Zone		45° 50.807' N 113° 13.163' W	
Alder Creek	Safety Zone		45° 44.621' N 113° 00.591' W	
Alder Creek	Safety Zone		45° 45.519' N 112° 59.582' W	
Alder Creek	Safety Zone		45° 43.260' N 113° 01.312' W	
Alder Creek	Unimproved Landing Area		45° 50.159' N 113° 04.500' W	
Alder Creek	Unimproved Landing Area		45° 50.020' N 113° 04.601' W	
Alder Creek	Unimproved Landing Area		45° 41.040' N 113° 04.082' W	

BEAVERHEAD-DEERLODGE NATIONAL FOREST

Flight Restriction Information

Alder Creek - 1/7629 - 12,500ft ceiling
Trail Creek - 1/7630 - 11,500ft ceiling
Black Mountain - 1/1730 - 10,500ft ceiling



Fire perimeter updated from Acres from IR on 08/29/2021 2315 MDT

0 1 2 3 4 Miles
1 inch equals 1 mile Scale: 1:60,000