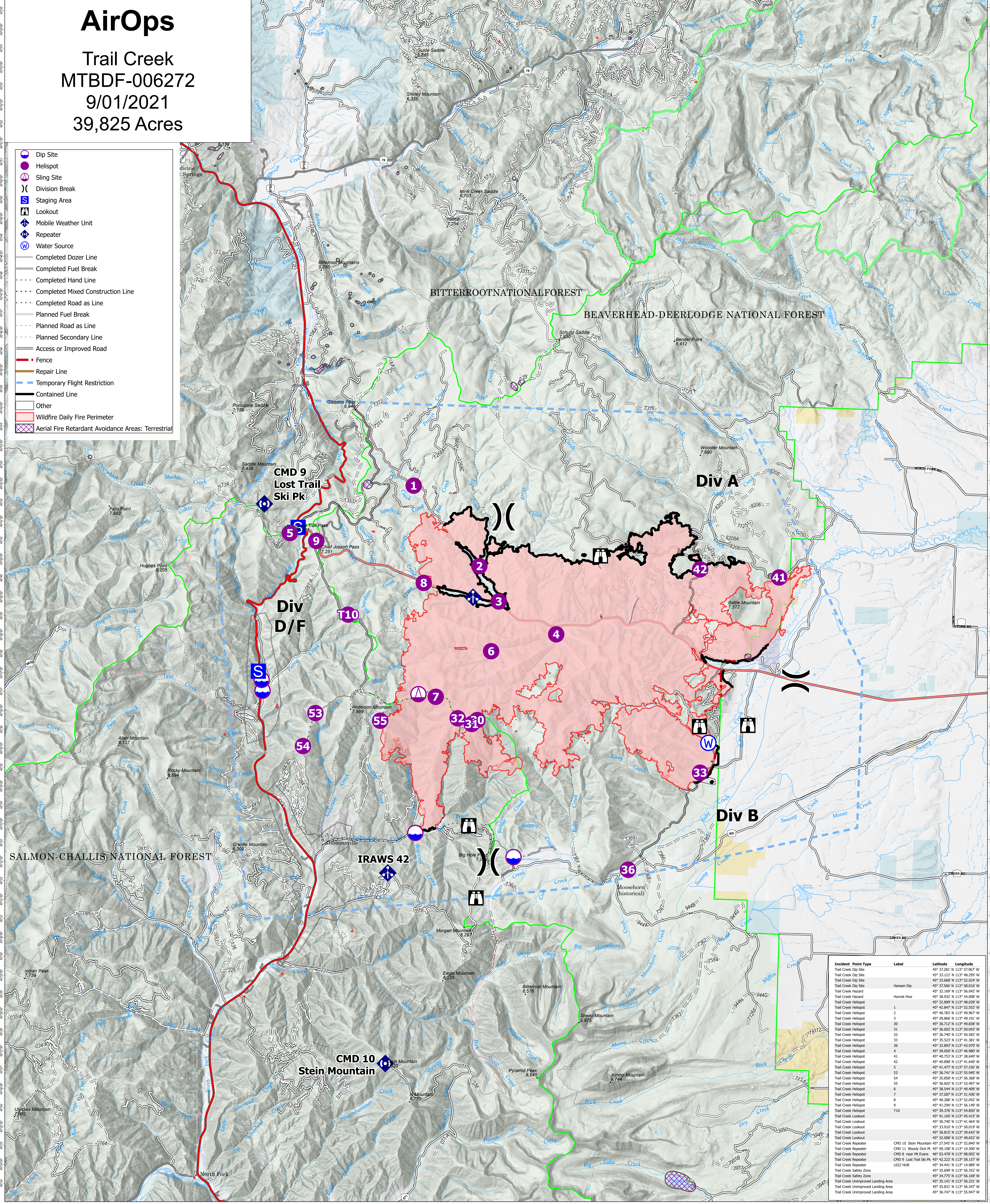


AirOps

Trail Creek
MTBDF-006272
9/01/2021
39,825 Acres

- Dip Site
- Helispot
- Sling Site
- Division Break
- Staging Area
- Lookout
- Mobile Weather Unit
- Repeater
- Water Source
- Completed Dozer Line
- Completed Fuel Break
- Completed Hand Line
- Completed Mixed Construction Line
- Planned Fuel Break
- Planned Road as Line
- Planned Secondary Line
- Access or Improved Road
- Fence
- Repair Line
- Temporary Flight Restriction
- Contained Line
- Other
- Wildfire Daily Fire Perimeter
- Aerial Fire Retardant Avoidance Areas: Terrestrial



Incident Point Type	Label	Latitude	Longitude
Trail Creek Dip Site		49° 37.281' N	113° 53.967' W
Trail Creek Dip Site		49° 33.121' N	113° 48.295' W
Trail Creek Dip Site		49° 33.668' N	113° 52.024' W
Trail Creek Dip Site		49° 37.566' N	113° 58.010' W
Trail Creek Dip Site	Hansen Dip	49° 32.169' N	113° 56.045' W
Trail Creek Hazard	Hornet Hive	49° 38.832' N	113° 54.098' W
Trail Creek Helispot	1	49° 32.899' N	113° 48.039' W
Trail Creek Helispot	2	49° 41.247' N	113° 52.522' W
Trail Creek Helispot	3	49° 40.783' N	113° 49.967' W
Trail Creek Helispot	4	49° 39.866' N	113° 49.191' W
Trail Creek Helispot	30	49° 36.712' N	113° 49.838' W
Trail Creek Helispot	31	49° 36.740' N	113° 50.582' W
Trail Creek Helispot	32	49° 36.740' N	113° 50.582' W
Trail Creek Helispot	33	49° 35.523' N	113° 41.381' W
Trail Creek Helispot	36	49° 33.893' N	113° 43.970' W
Trail Creek Helispot	4	49° 39.050' N	113° 46.980' W
Trail Creek Helispot	41	49° 40.753' N	113° 38.649' W
Trail Creek Helispot	42	49° 40.898' N	113° 41.640' W
Trail Creek Helispot	5	49° 41.247' N	113° 52.522' W
Trail Creek Helispot	53	49° 36.741' N	113° 55.945' W
Trail Creek Helispot	54	49° 35.858' N	113° 56.368' W
Trail Creek Helispot	55	49° 36.502' N	113° 53.497' W
Trail Creek Helispot	6	49° 38.544' N	113° 49.409' W
Trail Creek Helispot	7	49° 37.287' N	113° 51.436' W
Trail Creek Helispot	8	49° 40.286' N	113° 52.042' W
Trail Creek Helispot	9	49° 41.247' N	113° 56.149' W
Trail Creek Helispot	10	49° 39.376' N	113° 54.850' W
Trail Creek Lookout		49° 41.165' N	113° 45.415' W
Trail Creek Lookout		49° 36.740' N	113° 48.464' W
Trail Creek Lookout		49° 33.910' N	113° 50.019' W
Trail Creek Lookout		49° 36.815' N	113° 39.643' W
Trail Creek Lookout		49° 32.008' N	113° 49.652' W
Trail Creek Repeater	CMD 10 Stein Mountain	49° 27.845' N	113° 43.940' W
Trail Creek Repeater	CMD 11 Bloody Dick Pt.	49° 09.198' N	113° 19.390' W
Trail Creek Repeater	Trail Creek Repeater	46° 03.478' N	113° 08.002' W
Trail Creek Repeater	CMD 9 Lost Trail Ski Pk.	49° 42.222' N	113° 58.157' W
Trail Creek Repeater	Trail Creek Repeater	49° 34.441' N	113° 14.989' W
Trail Creek Safety Zone		49° 35.699' N	113° 56.352' W
Trail Creek Safety Zone		49° 34.725' N	113° 56.169' W
Trail Creek Unimproved Landing Area		49° 35.141' N	113° 56.231' W
Trail Creek Unimproved Landing Area		49° 35.831' N	113° 56.347' W
Trail Creek Unimproved Landing Area		49° 36.747' N	113° 55.947' W

Flight Restriction Information
 Alder Creek - 1/7629- 12,500ft ceiling
 Trail Creek - 1/7630 - 11,500ft ceiling
 Black Mountain - 1/1730 - 10,500ft ceiling



NR Team 5
9/1/2021 0914
North American 1983 Datum. LatLong Grid

