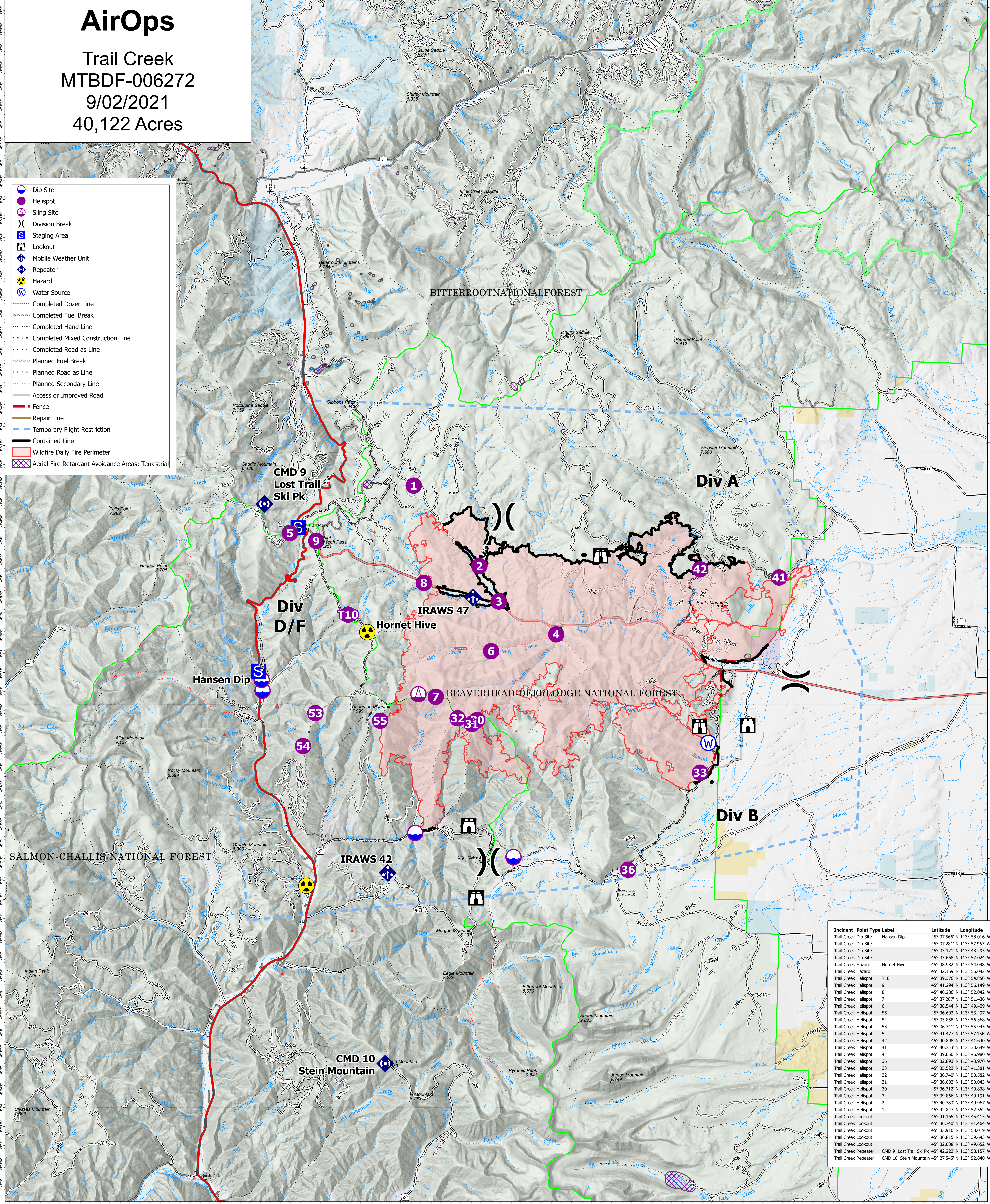


AirOps

Trail Creek
MTBDF-006272
9/02/2021
40,122 Acres

- Dip Site
- Helispot
- Sling Site
- Division Break
- Staging Area
- Lookout
- Mobile Weather Unit
- Repeater
- Hazard
- Water Source
- Completed Dozer Line
- Completed Fuel Break
- Completed Hand Line
- Completed Mixed Construction Line
- Completed Road as Line
- Planned Fuel Break
- Planned Road as Line
- Planned Secondary Line
- Access or Improved Road
- Fence
- Repair Line
- Temporary Flight Restriction
- Contained Line
- Wildfire Daily Fire Perimeter
- Aerial Fire Retardant Avoidance Areas: Terrestrial



Incident	Point Type Label	Latitude	Longitude
Trail Creek Dip Site	Hansen Dip	45° 37.566' N 113° 58.016' W	
Trail Creek Dip Site		45° 37.281' N 113° 57.967' W	
Trail Creek Dip Site		45° 33.121' N 113° 48.295' W	
Trail Creek Dip Site		45° 33.668' N 113° 52.024' W	
Trail Creek Hazard	Hornet Hive	45° 38.932' N 113° 54.098' W	
Trail Creek Hazard		45° 32.169' N 113° 56.042' W	
Trail Creek Helispot	T10	45° 39.376' N 113° 54.850' W	
Trail Creek Helispot	9	45° 41.294' N 113° 56.149' W	
Trail Creek Helispot	8	45° 40.286' N 113° 52.042' W	
Trail Creek Helispot	7	45° 37.287' N 113° 51.436' W	
Trail Creek Helispot	6	45° 38.544' N 113° 49.409' W	
Trail Creek Helispot	55	45° 36.602' N 113° 53.497' W	
Trail Creek Helispot	54	45° 35.858' N 113° 56.368' W	
Trail Creek Helispot	53	45° 36.741' N 113° 55.945' W	
Trail Creek Helispot	5	45° 41.477' N 113° 57.156' W	
Trail Creek Helispot	42	45° 40.898' N 113° 41.640' W	
Trail Creek Helispot	41	45° 40.753' N 113° 38.649' W	
Trail Creek Helispot	4	45° 39.050' N 113° 46.980' W	
Trail Creek Helispot	36	45° 32.893' N 113° 43.970' W	
Trail Creek Helispot	33	45° 35.523' N 113° 41.381' W	
Trail Creek Helispot	32	45° 36.740' N 113° 50.582' W	
Trail Creek Helispot	31	45° 36.602' N 113° 50.043' W	
Trail Creek Helispot	30	45° 36.712' N 113° 49.838' W	
Trail Creek Helispot	3	45° 39.866' N 113° 49.191' W	
Trail Creek Helispot	2	45° 40.783' N 113° 49.967' W	
Trail Creek Helispot	1	45° 42.847' N 113° 52.552' W	
Trail Creek Lookout		45° 41.165' N 113° 45.415' W	
Trail Creek Lookout		45° 36.740' N 113° 41.464' W	
Trail Creek Lookout		45° 33.910' N 113° 50.019' W	
Trail Creek Lookout		45° 36.815' N 113° 39.643' W	
Trail Creek Lookout		45° 32.008' N 113° 49.655' W	
Trail Creek Repeater	CMD 9 Lost Trail Ski Pk	45° 42.222' N 113° 58.157' W	
Trail Creek Repeater	CMD 10 Stein Mountain	45° 27.545' N 113° 52.840' W	

Flight Restriction Information
 Alder Creek - 1/7629- 12,500ft ceiling
 Trail Creek - 1/7630 - 11,500ft ceiling
 Black Mountain - 1/1730 - 10,500ft ceiling



NR Team 5
9/2/2021 0643
North American 1983 Datum. LatLong Grid

Fire perimeter updated from Acres from IR on 9/1/2021 2218 MDT

Scale: 1:54,688
1 inch equals 1 mile