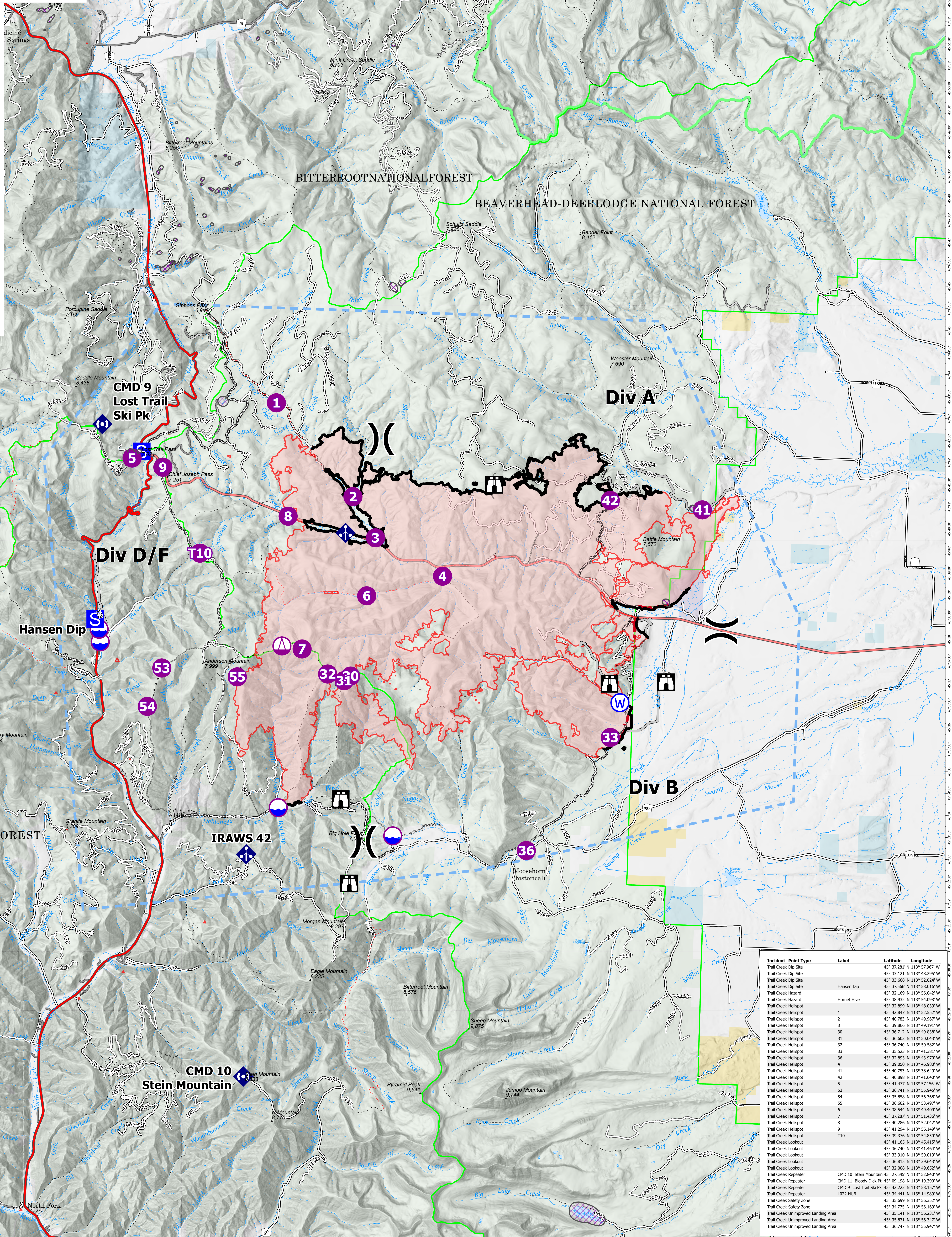


AirOps

Trail Creek
MTBDF-006272
9/03/2021
40,459 Acres

- Dip Site
- Helispot
- Sling Site
- Division Break
- Staging Area
- Lookout
- Mobile Weather Unit
- Repeater
- Water Source
- Completed Dozer Line
- Completed Fuel Break
- Completed Hand Line
- Completed Mixed Construction Line
- Planned Fuel Break
- Planned Road as Line
- Planned Secondary Line
- Access or Improved Road
- Fence
- Repair Line
- Temporary Flight Restriction
- Contained Line
- Wildfire Daily Fire Perimeter
- Aerial Fire Retardant Avoidance Areas: Terrestrial



Incident Point Type	Label	Latitude	Longitude
Trail Creek Dip Site		45° 32.281' N 113° 57.962' W	
Trail Creek Dip Site		45° 33.121' N 113° 48.295' W	
Trail Creek Dip Site		45° 33.668' N 113° 52.024' W	
Trail Creek Dip Site	Hansen Dip	45° 37.566' N 113° 58.016' W	
Trail Creek Hazard		45° 32.169' N 113° 56.042' W	
Trail Creek Hazard	Hornet Hive	45° 38.932' N 113° 54.098' W	
Trail Creek Helispot	1	45° 32.899' N 113° 48.039' W	
Trail Creek Helispot	2	45° 42.847' N 113° 52.552' W	
Trail Creek Helispot	3	45° 40.782' N 113° 49.962' W	
Trail Creek Helispot	30	45° 39.866' N 113° 49.191' W	
Trail Creek Helispot	30	45° 36.722' N 113° 49.838' W	
Trail Creek Helispot	31	45° 36.602' N 113° 50.013' W	
Trail Creek Helispot	32	45° 36.740' N 113° 50.552' W	
Trail Creek Helispot	33	45° 35.523' N 113° 41.381' W	
Trail Creek Helispot	36	45° 32.893' N 113° 43.970' W	
Trail Creek Helispot	4	45° 38.059' N 113° 46.800' W	
Trail Creek Helispot	41	45° 40.752' N 113° 38.649' W	
Trail Creek Helispot	42	45° 40.898' N 113° 41.640' W	
Trail Creek Helispot	5	45° 41.477' N 113° 57.156' W	
Trail Creek Helispot	6	45° 36.602' N 113° 49.409' W	
Trail Creek Helispot	7	45° 32.287' N 113° 51.430' W	
Trail Creek Helispot	8	45° 40.286' N 113° 52.042' W	
Trail Creek Helispot	9	45° 41.294' N 113° 56.149' W	
Trail Creek Helispot	T10	45° 38.378' N 113° 54.850' W	
Trail Creek Helispot	53	45° 41.165' N 113° 45.919' W	
Trail Creek Lookout		45° 36.740' N 113° 41.464' W	
Trail Creek Lookout		45° 33.910' N 113° 50.019' W	
Trail Creek Lookout		45° 38.815' N 113° 56.210' W	
Trail Creek Lookout		45° 32.008' N 113° 49.652' W	
Trail Creek Repeater	CMD 10 Stein Mountain	45° 27.545' N 113° 52.840' W	
Trail Creek Repeater	CMD 11 Bloody Dick Pt	45° 09.198' N 113° 19.390' W	
Trail Creek Repeater	CMD 9 Lost Trail Ski Pk	45° 42.222' N 113° 48.117' W	
Trail Creek Repeater	L022 HUB	45° 34.441' N 113° 14.989' W	
Trail Creek Safety Zone		45° 35.699' N 113° 56.352' W	
Trail Creek Safety Zone		45° 34.775' N 113° 56.107' W	
Trail Creek Unimproved Landing Area		45° 35.141' N 113° 56.210' W	
Trail Creek Unimproved Landing Area		45° 36.747' N 113° 55.947' W	

Flight Restriction Information
 Alder Creek - 1/7629 - 12,500ft ceiling
 Trail Creek - 1/7630 - 11,500ft ceiling
 Black Mountain - 1/1730 - 10,500ft ceiling



NR Team 5
9/3/2021 0636
North American 1983 Datum, LatLong Grid