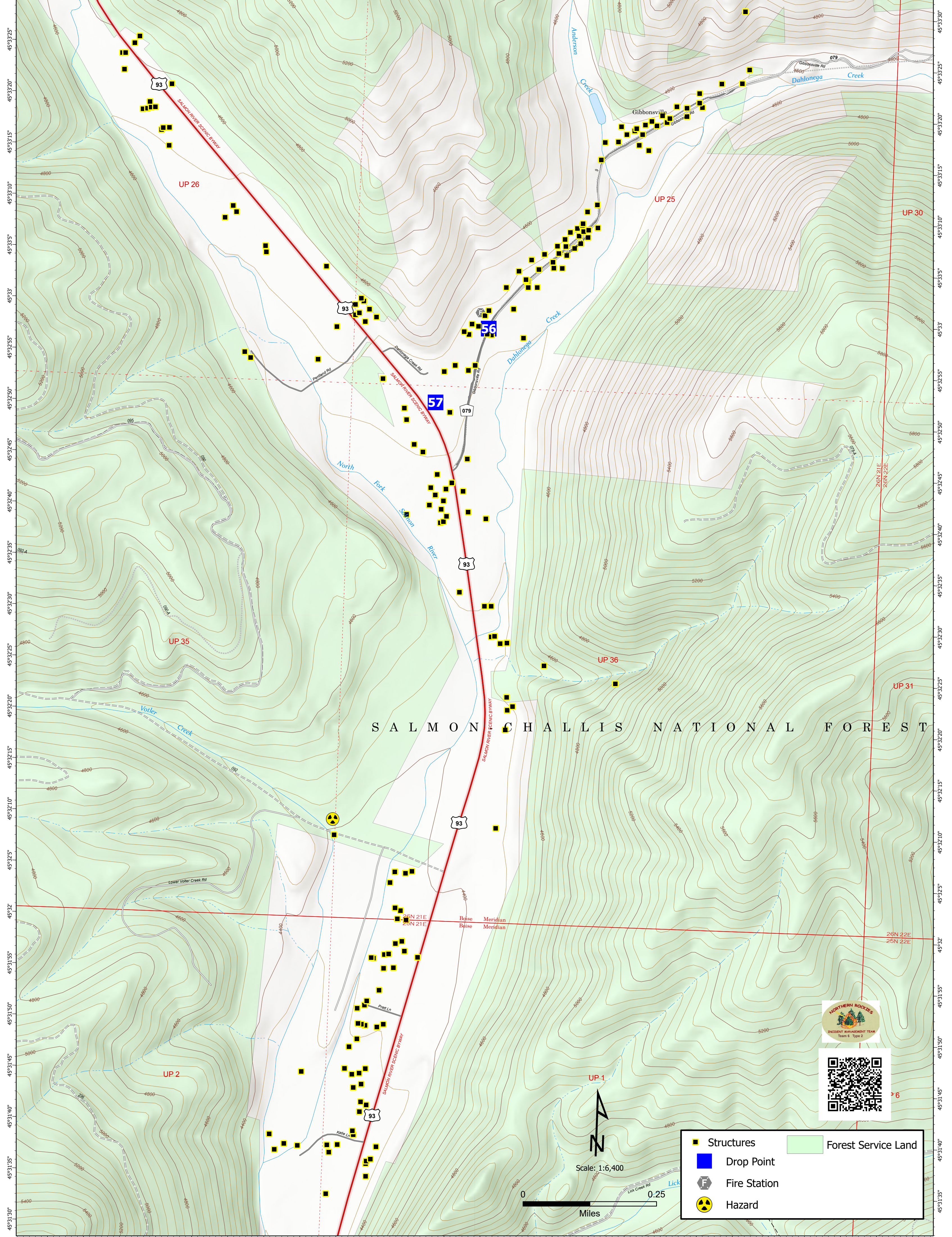


-113°56'50" -113°56'45" -113°56'40" -113°56'35" -113°56'30" -113°56'25" -113°56'20" -113°56'15" -113°56'10" -113°56'5" -113°56'0" -113°55'55" -113°55'50" -113°55'45" -113°55'40" -113°55'35" -113°55'30" -113°55'25" -113°55'20" -113°55'15" -113°55'10" -113°55'5" -113°55'0" -113°54'55" -113°54'50" -113°54'45"



-113°56'40" -113°56'35" -113°56'30" -113°56'25" -113°56'20" -113°56'15" -113°56'10" -113°56'5" -113°56'0" -113°55'55" -113°55'50" -113°55'45" -113°55'40" -113°55'35" -113°55'30" -113°55'25" -113°55'20" -113°55'15" -113°55'10" -113°55'5" -113°55'0" -113°54'55" -113°54'50" -113°54'45"

SALMON CHALLIS NATIONAL FOREST



- Structures
- Drop Point
- Fire Station
- Hazard
- Forest Service Land

Scale: 1:6,400  
0 0.25 Miles