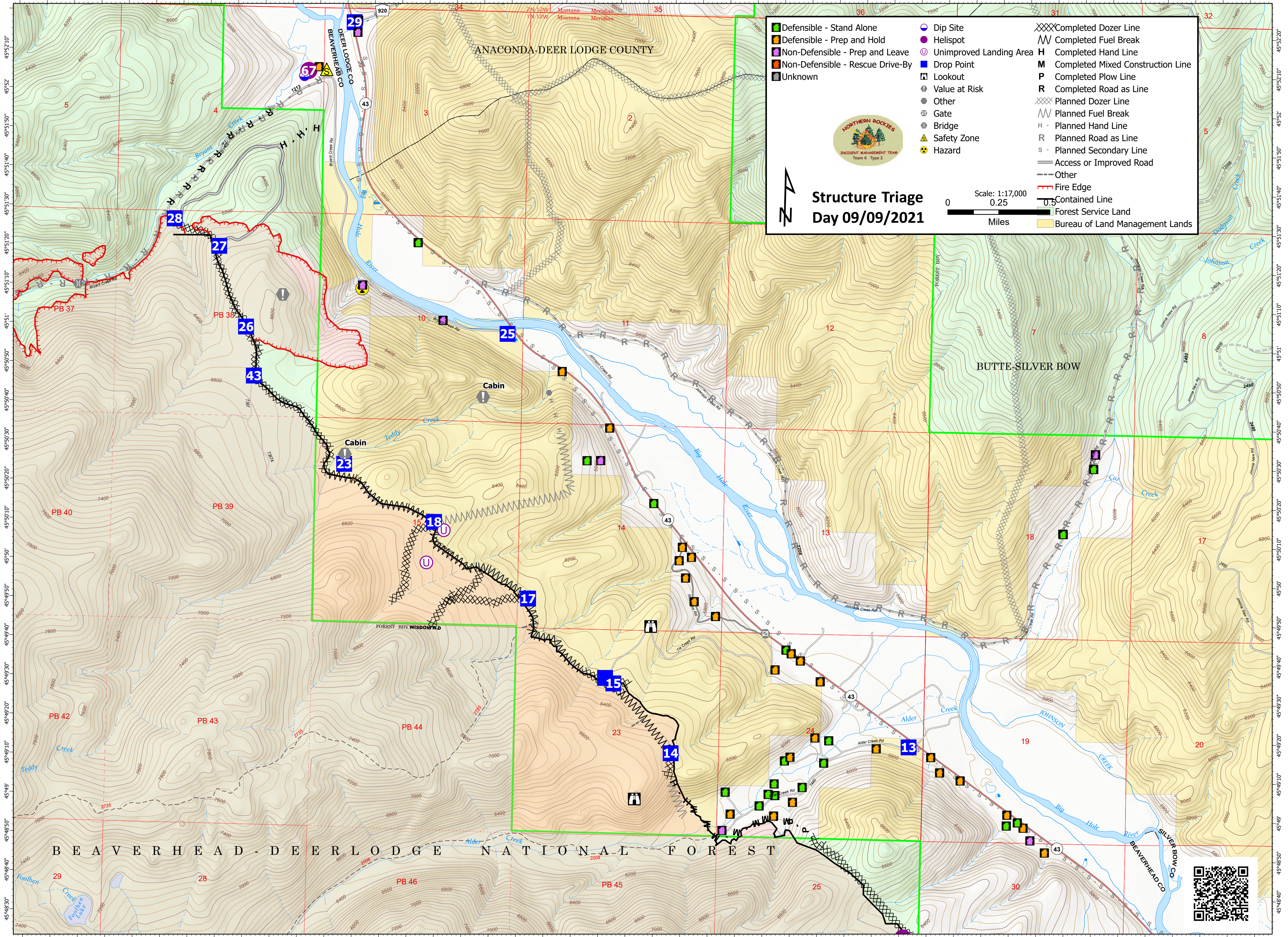


113°7'10" -113°7' -113°6'50" -113°6'40" -113°6'30" -113°6'20" -113°6'10" -113°6' -113°5'50" -113°5'40" -113°5'30" -113°5'20" -113°5'10" -113°5' -113°4'50" -113°4'40" -113°4'30" -113°4'20" -113°4'10" -113°4' -113°3'50" -113°3'40" -113°3'30" -113°3'20" -113°3'10" -113°3' -113°2'50" -113°2'40" -113°2'30" -113°2'20" -113°2'10" -113°2' -113°1'50" -113°1'40" -113°1'30" -113°1'20" -113°1'10" -113°1' -113°0'50" -113°0'40" -113°0'30" -113°0'20" -113°0'10" -113°0' -112°59'50"



| | | |
|----------------------------------|-------------------------|-----------------------------------|
| Defensible - Stand Alone | Dip Site | Completed Dozer Line |
| Defensible - Prep and Hold | Helispot | Completed Fuel Break |
| Non-Defensible - Prep and Leave | Unimproved Landing Area | Completed Hand Line |
| Non-Defensible - Rescue Drive-By | Drop Point | Completed Mixed Construction Line |
| Unknown | Lookout | Completed Plow Line |
| | Value at Risk | Completed Road as Line |
| | Other | Planned Dozer Line |
| | Gate | Planned Fuel Break |
| | Bridge | Planned Hand Line |
| | Safety Zone | Planned Road as Line |
| | Hazard | Planned Secondary Line |
| | | Access or Improved Road |
| | | Other |
| | | Fire Edge |
| | | Contained Line |
| | | Forest Service Land |
| | | Bureau of Land Management Lands |



Structure Triage
Day 09/09/2021

Scale: 1:17,000
0 0.25
Miles

