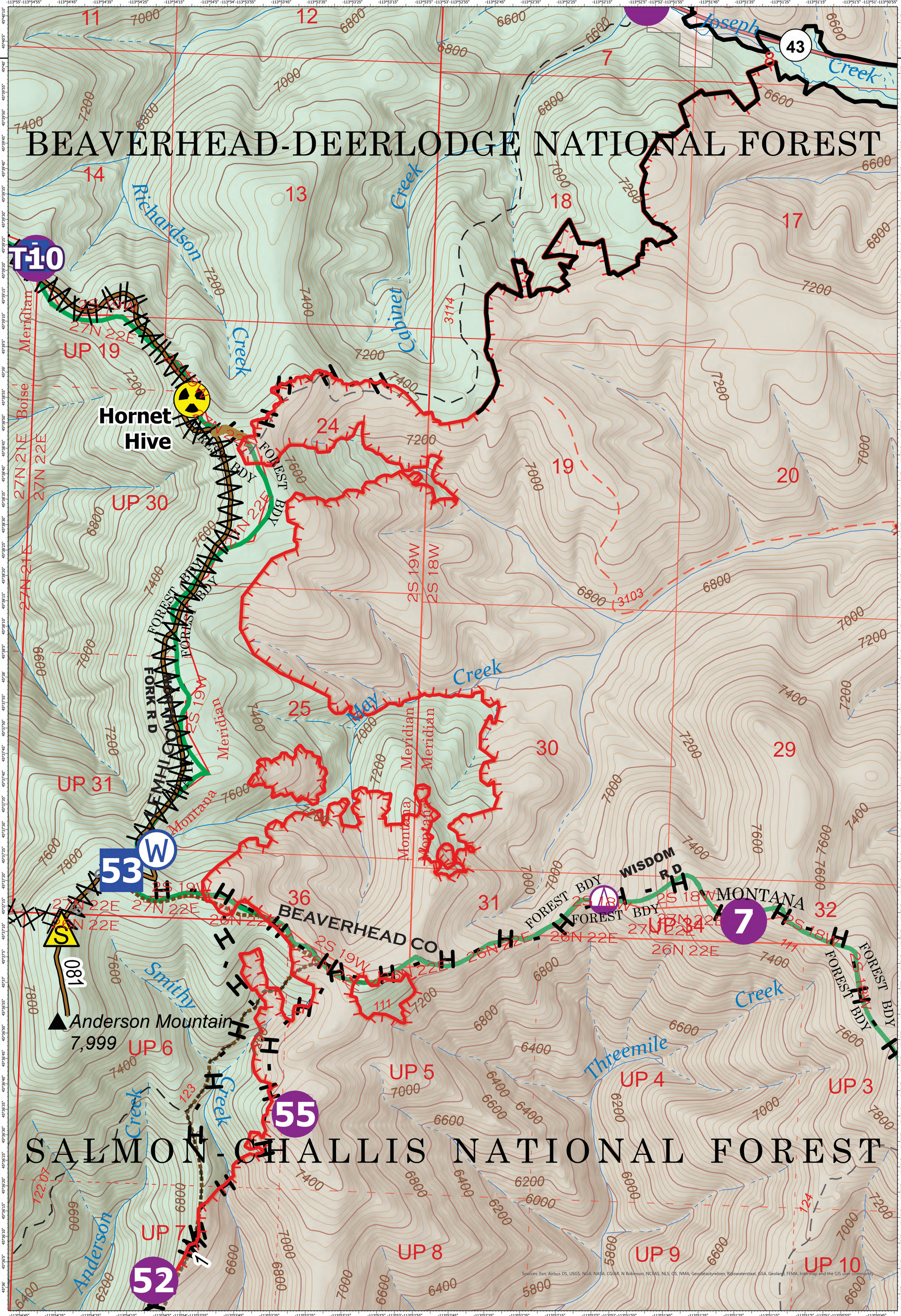
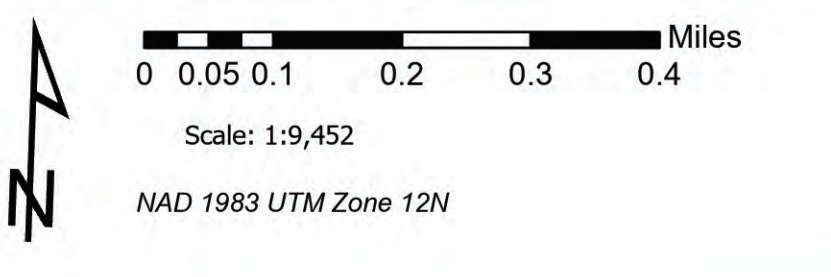


BEAVERHEAD-DEERLODGE NATIONAL FOREST

SALMON-CHALLIS NATIONAL FOREST



BURN OPS
 Trail Creek
 MTBDF-006272
 Trail Creek GIS Acres 56,798
 09/23/2021 21:36 MDT
 Acres from IR



- Helispot
- ▲ Safety Zone
- / Completed Fuel Break
- Fire Edge
- ⚡ Sling Site
- ☠ Hazard
- H Completed Hand Line
- Contained Line
- ⚕ Medical
- ⊙ Water Source
- S Planned Secondary Line
- Forest Service Land
- Drop Point
- ⊗ Completed Dozer Line
- Repair Line

Day 9/24/2021

Sources: Esri, Airbus DS, USGS, NGA, NASA, CGIAR, N Robinson, NCEAS, NLS, US, NMA, Geostatistysreken, Pijkwaterstaat, BSA, Geoland, FEMA, Intermap and the GIS user community