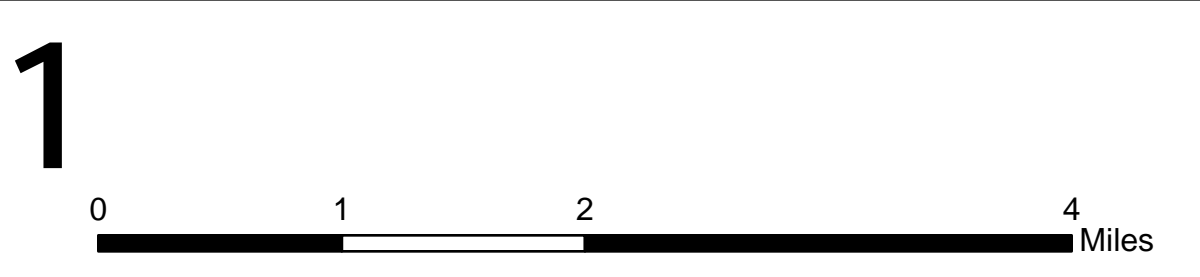
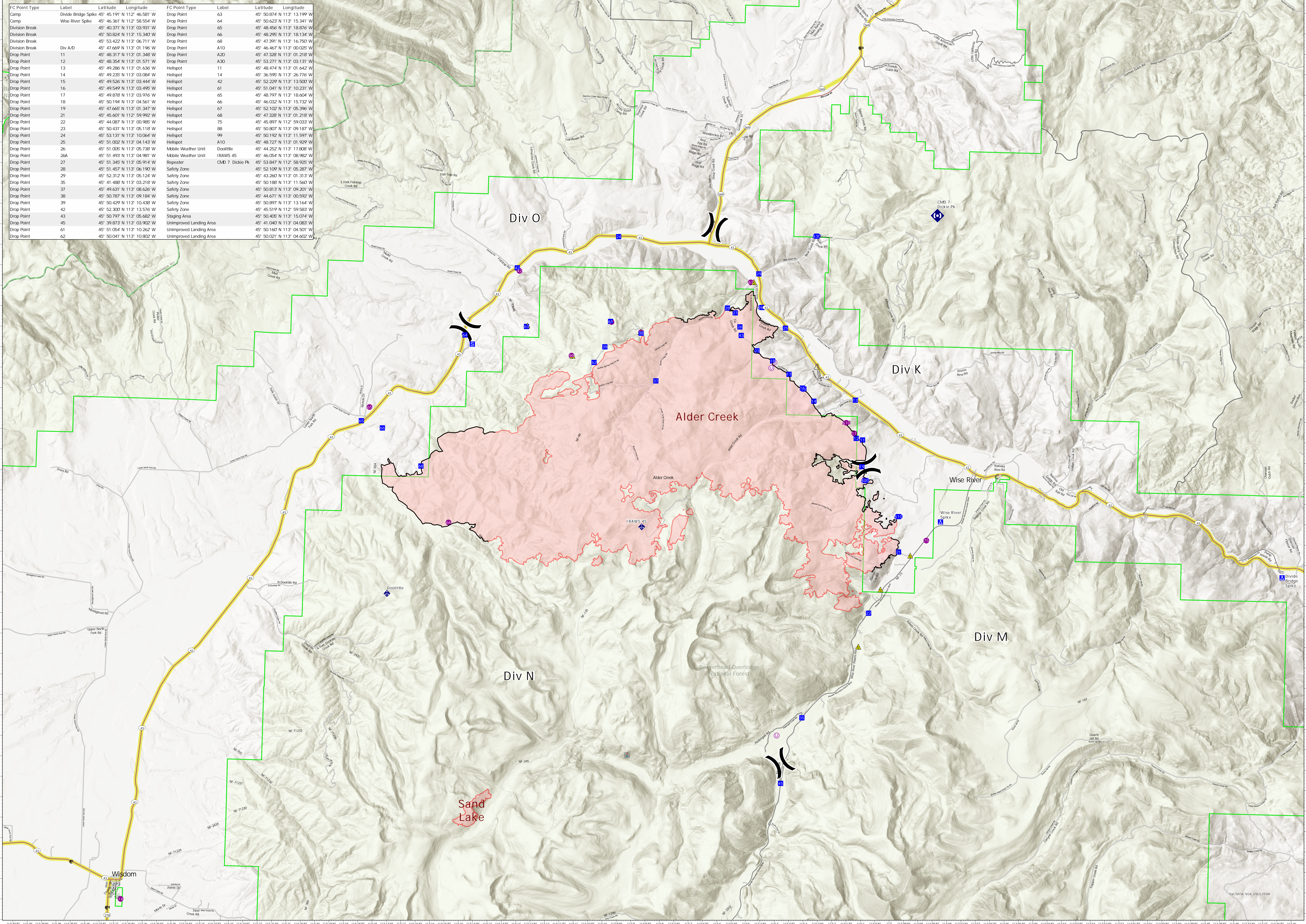


FC Point Type	Label	Latitude	Longitude	FC Point Type	Label	Latitude	Longitude
Camp	Divide Bridge Spike	45° 46.381' N	113° 58.554' W	Drop Point	63	45° 50.874' N	113° 13.199' W
Division Break		45° 40.371' N	113° 03.931' W	Drop Point	64	45° 50.623' N	113° 15.341' W
Division Break		45° 50.824' N	113° 15.347' W	Drop Point	65	45° 48.456' N	113° 18.876' W
Division Break		45° 53.422' N	113° 06.711' W	Drop Point	66	45° 48.295' N	113° 18.134' W
Drop Point	11	45° 47.669' N	113° 01.196' W	Drop Point	68	45° 47.391' N	113° 16.750' W
Drop Point	12	45° 48.317' N	113° 01.348' W	Drop Point	A10	45° 46.467' N	113° 00.025' W
Drop Point	13	45° 48.354' N	113° 01.571' W	Drop Point	A20	45° 47.328' N	113° 01.218' W
Drop Point	14	45° 49.286' N	113° 01.636' W	Drop Point	A30	45° 53.271' N	113° 03.131' W
Drop Point	15	45° 49.235' N	113° 03.084' W	Helispot	11	45° 48.474' N	113° 01.642' W
Drop Point	16	45° 49.549' N	113° 03.495' W	Helispot	14	45° 36.595' N	113° 26.776' W
Drop Point	17	45° 49.878' N	113° 03.976' W	Helispot	42	45° 52.229' N	113° 13.500' W
Drop Point	18	45° 50.194' N	113° 04.561' W	Helispot	61	45° 51.041' N	113° 10.231' W
Drop Point	19	45° 47.665' N	113° 01.347' W	Helispot	65	45° 48.797' N	113° 18.604' W
Drop Point	21	45° 45.601' N	113° 59.992' W	Helispot	66	45° 46.032' N	113° 15.732' W
Drop Point	22	45° 44.087' N	113° 00.985' W	Helispot	67	45° 52.102' N	113° 05.396' W
Drop Point	23	45° 50.431' N	113° 05.118' W	Helispot	68	45° 47.328' N	113° 01.218' W
Drop Point	24	45° 53.131' N	113° 10.064' W	Helispot	75	45° 45.897' N	112° 59.033' W
Drop Point	25	45° 51.032' N	113° 04.143' W	Helispot	88	45° 50.807' N	113° 09.187' W
Drop Point	26	45° 51.025' N	113° 05.735' W	Helispot	99	45° 50.192' N	113° 11.597' W
Drop Point	26A	45° 51.492' N	113° 04.981' W	Helispot	AT0	45° 48.727' N	113° 01.929' W
Drop Point	27	45° 51.345' N	113° 05.914' W	Mobile Weather Unit	Doolittle	45° 44.252' N	113° 17.908' W
Drop Point	28	45° 51.457' N	113° 06.190' W	Mobile Weather Unit	IRAWS 45	45° 44.054' N	113° 08.982' W
Drop Point	29	45° 52.312' N	113° 05.124' W	Repeater	CMD 7 Dickie Pk	45° 53.847' N	112° 58.925' W
Drop Point	35	45° 41.488' N	113° 03.218' W	Safety Zone		45° 52.109' N	113° 05.287' W
Drop Point	37	45° 49.631' N	113° 08.626' W	Safety Zone		45° 43.260' N	113° 01.313' W
Drop Point	38	45° 50.787' N	113° 09.184' W	Safety Zone		45° 50.188' N	113° 11.560' W
Drop Point	39	45° 50.429' N	113° 10.438' W	Safety Zone		45° 50.813' N	113° 09.201' W
Drop Point	42	45° 52.303' N	113° 13.516' W	Safety Zone		45° 44.671' N	113° 00.592' W
Drop Point	43	45° 50.797' N	113° 05.662' W	Staging Area		45° 50.897' N	113° 13.164' W
Drop Point	45	45° 39.873' N	113° 03.902' W	Unimproved Landing Area		45° 45.119' N	112° 59.583' W
Drop Point	61	45° 51.054' N	113° 10.262' W	Unimproved Landing Area		45° 50.405' N	113° 15.074' W
Drop Point	62	45° 50.041' N	113° 10.802' W	Unimproved Landing Area		45° 41.042' N	113° 04.083' W
				Unimproved Landing Area		45° 50.160' N	113° 04.501' W
				Unimproved Landing Area		45° 50.021' N	113° 04.602' W



- Helispot
- U Unimproved Landing Area
- ⌋ Division Break
- Drop Point
- ◆ Camp
- Staging Area
- ◆ Mobile Weather Unit
- ◆ Repeater
- ▲ Safety Zone
- State Boundary

