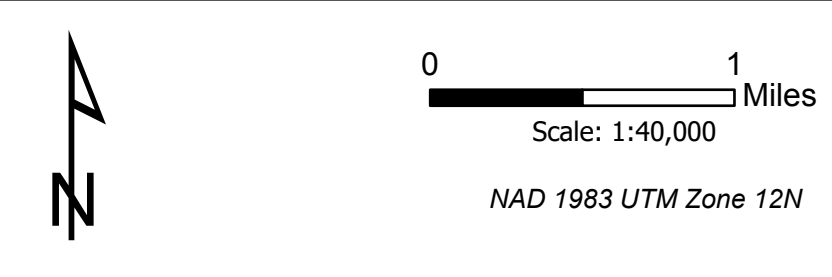


OPERATIONS
09/28/2021

Trail Creek
MTBDF-006272
Trail Creek GIS Areas ©
09/27/2021 2011 MDT
Acres from IR



- Structures
- ◻ Structures
- ◉ Dip Site
- ◉ Heliport
- ◉ Sling Site
- ◉ Unimproved Landing Area
- ◉ Division Break
- ◉ Medical
- ◉ Drop Point
- ◉ Camp
- ◉ Staging Area
- ◉ Lookout
- ◉ Value at Risk
- ◉ Other
- ◉ Gate
- ◉ Fire Station
- ◉ Bridge
- ◉ Resource Location
- ◉ Landing or Log Deck
- ◉ Fence - Cut/Damaged
- ◉ Culvert
- ◉ Mobile Weather Unit
- ◉ Internet Access
- ◉ Repeater
- ◉ Safety Zone
- ◉ Hazard
- ◉ Water Source
- ◉ IR Intense Heat
- ◉ IR Scattered Heat
- ◉ IR Isolated Heat Source
- ◉ Possible IR Heat Source
- ◉ IR Heat Perimeter
- ◉ National Park Service Lands
- ◉ Forest Service Land
- ◉ Other State Lands
- ◉ Bureau of Land Management Lands

