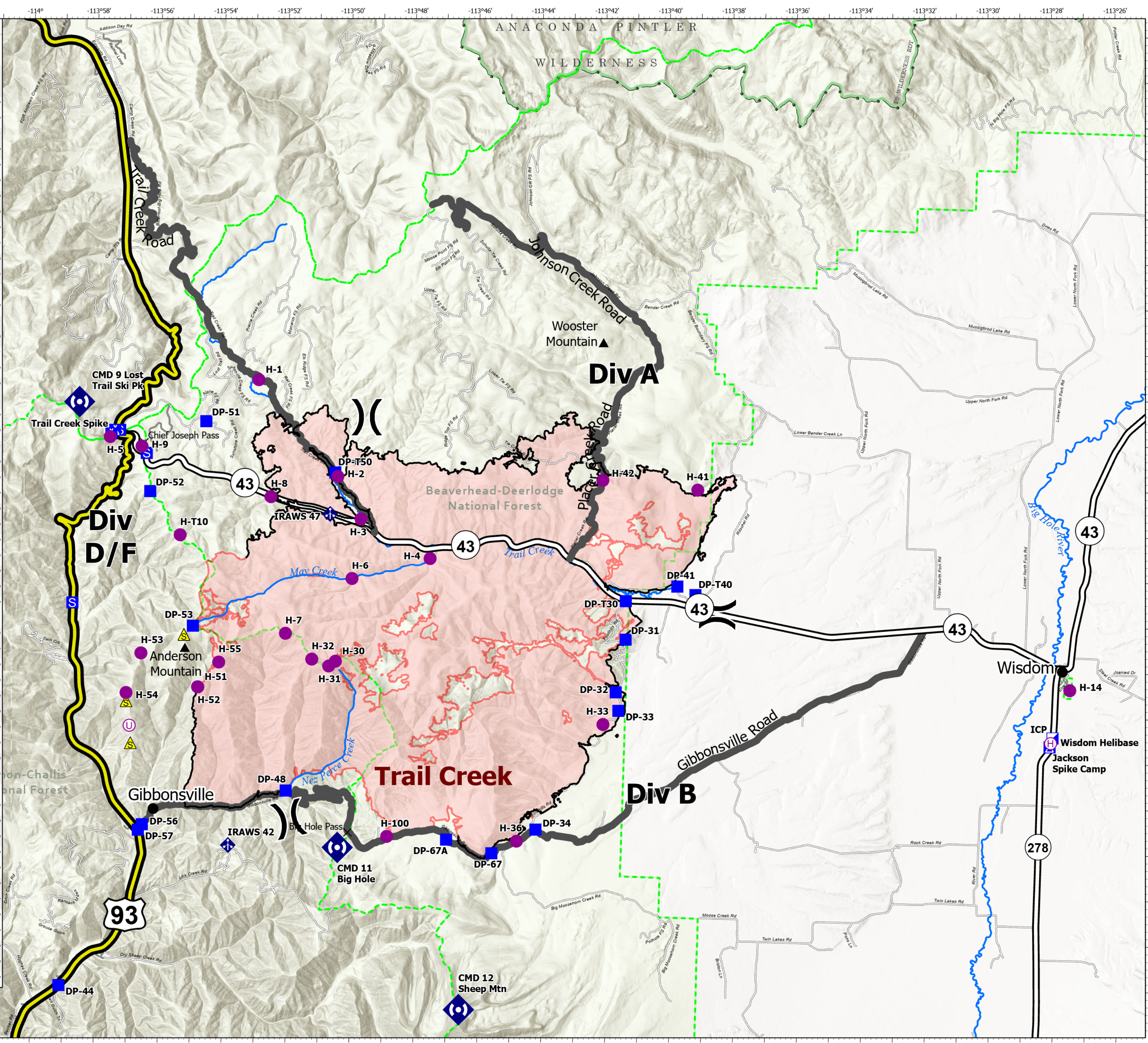


FC Point Type	Label	Latitude	Longitude
Camp	Jackson Spike Camp	45° 35.333' N 113° 27.357' W	
Camp	Trail Creek Base Camp	45° 41.549' N 113° 57.124' W	
Camp	Trail Creek Spike	45° 41.631' N 113° 57.009' W	
Division Break		45° 38.034' N 113° 37.903' W	
Division Break		45° 32.969' N 113° 49.238' W	
Division Break		45° 42.109' N 113° 49.122' W	
Drop Point	31	45° 37.404' N 113° 40.761' W	
Drop Point	32	45° 36.242' N 113° 41.013' W	
Drop Point	33	45° 35.835' N 113° 40.912' W	
Drop Point	34	45° 33.162' N 113° 43.387' W	
Drop Point	41	45° 38.611' N 113° 39.192' W	
Drop Point	44	45° 29.373' N 113° 58.149' W	
Drop Point	48	45° 33.831' N 113° 51.254' W	
Drop Point	51	45° 41.896' N 113° 54.158' W	
Drop Point	52	45° 40.313' N 113° 55.840' W	
Drop Point	53	45° 37.381' N 113° 54.350' W	
Drop Point	56	45° 32.975' N 113° 55.724' W	
Drop Point	57	45° 32.852' N 113° 55.841' W	
Drop Point	67	45° 32.609' N 113° 44.741' W	
Drop Point	67A	45° 32.874' N 113° 46.174' W	
Drop Point	T30	45° 38.253' N 113° 40.794' W	
Drop Point	T40	45° 38.437' N 113° 38.614' W	
Drop Point	T50	45° 40.868' N 113° 50.051' W	
Helibase	Wisdom Helibase	45° 35.418' N 113° 27.326' W	
Helispot	1	45° 42.848' N 113° 52.553' W	
Helispot	100	45° 32.900' N 113° 48.040' W	
Helispot	14	45° 36.595' N 113° 26.776' W	
Helispot	2	45° 40.783' N 113° 49.968' W	
Helispot	3	45° 39.866' N 113° 49.191' W	
Helispot	30	45° 36.712' N 113° 49.839' W	
Helispot	31	45° 36.602' N 113° 50.044' W	
Helispot	32	45° 36.740' N 113° 50.583' W	
Helispot	33	45° 35.523' N 113° 41.382' W	
Helispot	36	45° 32.894' N 113° 43.971' W	
Helispot	4	45° 39.050' N 113° 46.981' W	
Helispot	41	45° 40.753' N 113° 38.650' W	
Helispot	42	45° 40.899' N 113° 41.641' W	
Helispot	5	45° 41.477' N 113° 57.157' W	
Helispot	51	45° 36.040' N 113° 54.124' W	
Helispot	52	45° 36.041' N 113° 54.133' W	
Helispot	53	45° 36.741' N 113° 55.946' W	
Helispot	54	45° 35.859' N 113° 56.369' W	
Helispot	55	45° 36.602' N 113° 53.498' W	
Helispot	6	45° 38.544' N 113° 49.410' W	
Helispot	7	45° 37.287' N 113° 51.437' W	
Helispot	8	45° 40.286' N 113° 52.043' W	
Helispot	9	45° 41.294' N 113° 56.150' W	
Helispot	T10	45° 39.376' N 113° 54.851' W	
Incident Command Post	ICP	45° 35.533' N 113° 27.272' W	
Mobile Weather Unit	IRAWS 42	45° 32.586' N 113° 53.005' W	
Mobile Weather Unit	IRAWS 47	45° 39.952' N 113° 50.166' W	
Repeater	CMD 11 Cont. Divide Trail	45° 32.619' N 113° 49.576' W	
Repeater	CMD 12 Sheep Mtn	45° 29.143' N 113° 45.606' W	
Repeater	CMD 9 Lost Trail Ski Pk	45° 42.222' N 113° 58.158' W	
Safety Zone		45° 34.758' N 113° 56.176' W	
Safety Zone		45° 37.183' N 113° 54.620' W	
Safety Zone		45° 35.679' N 113° 56.358' W	
Staging Area		45° 41.148' N 113° 55.991' W	
Staging Area		45° 41.635' N 113° 56.854' W	
Staging Area		45° 37.794' N 113° 58.153' W	
Unimproved Landing Area		45° 35.141' N 113° 56.232' W	



Transportation
Trail Creek 57,299 Acres
09/27/2021 2039 MDT
9/28/2021



- US Highway
- State Highway
- Local Route
- Helispot
- Ⓜ Helibase
- Ⓢ Unimproved Landing Area
- X Division Break
- Ⓜ Incident Command Post
- Ⓜ Drop Point
- Ⓜ Camp
- Ⓜ Staging Area
- Ⓜ Mobile Weather Unit
- Ⓜ Repeater
- ⚠ Safety Zone
- Ⓜ State Boundary

