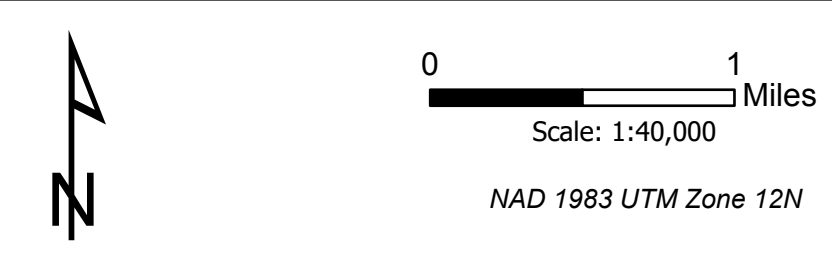


OPERATIONS

Trail Creek
MTBDF-006272
Trail Creek GIS Acres 65,978
09/29/2021 2:35 MDT
Acres



- | | | | | | | | |
|--------------|---------------------------|-----------------|-----------------------|-----------------------|---------------------------|-----------------------|-----------------------------------|
| • Structures | ⊗ Unimproved Landing Area | ⊡ Staging Area | ⊙ Fire Station | ⊙ Culvert | ⚠ Safety Zone | ⊡ IR Heat Perimeter | ⊡ Bureau of Land Management Lands |
| ⊡ Structures | ⊗ Division Break | ⊡ Lookout | ⊙ Bridge | ⊙ Clean Up Area | ⚠ Hazard | ⊡ IR Intense Heat | ⊡ National Park Service Lands |
| ⊙ Dip Site | ⊡ Medical | ⊙ Value at Risk | ⊙ Resource Location | ⊙ Mobile Weather Unit | ⊙ Water Source | ⊡ IR Scattered Heat | |
| ⊙ Helispot | ⊡ Drop Point | ⊙ Other | ⊙ Landing or Log Deck | ⊙ Internet Access | ⊙ IR Isolated Heat Source | ⊡ Forest Service Land | |
| ⊙ Sling Site | ⊡ Camp | ⊙ Gate | ⊙ Fence - Cut/Damaged | ⊙ Repeater | ⊙ Possible IR Heat Source | ⊡ Other State Lands | |

