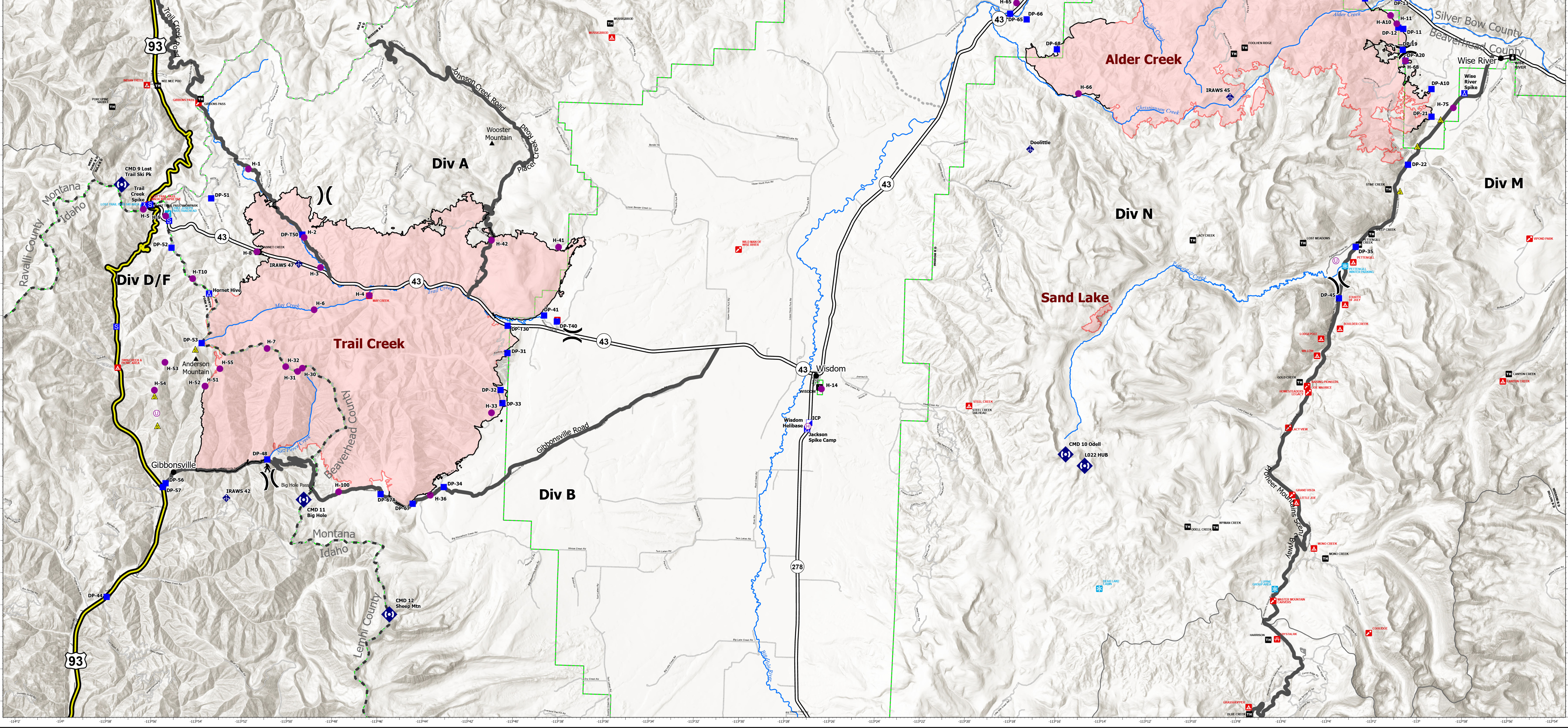
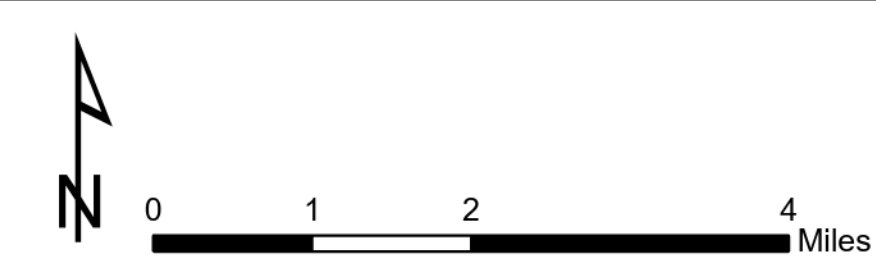


FC Point Type	Label	Latitude WGS84 DDM	Longitude WGS84 DDM	FC Point Type	Label	Latitude WGS84 DDM	Longitude WGS84 DDM
Camp	Hornet Hive	45° 38.032' N	113° 54.099' W	Drop Point	A20	45° 47.328' N	113° 01.218' W
Camp	Jackson Spike Camp	45° 35.333' N	113° 27.357' W	Drop Point	A30	45° 53.271' N	113° 03.231' W
Camp	Trail Creek Spike	45° 41.631' N	113° 57.009' W	Drop Point	T30	45° 38.253' N	113° 40.794' W
Drop Point	11	45° 46.361' N	113° 58.556' W	Drop Point	T40	45° 38.437' N	113° 38.614' W
Drop Point	12	45° 46.354' N	113° 01.571' W	Drop Point	T50	45° 40.868' N	113° 50.051' W
Drop Point	13	45° 49.286' N	113° 01.636' W	Helibase	Wisdom Helibase	45° 35.418' N	113° 27.326' W
Drop Point	14	45° 49.235' N	113° 03.084' W	Helispot	1	45° 42.848' N	113° 52.533' W
Drop Point	15	45° 49.525' N	113° 03.444' W	Helispot	100	45° 32.900' N	113° 48.040' W
Drop Point	16	45° 49.582' N	113° 03.456' W	Helispot	11	45° 40.444' N	113° 01.442' W
Drop Point	17	45° 49.878' N	113° 03.976' W	Helispot	14	45° 36.955' N	113° 26.776' W
Drop Point	18	45° 50.194' N	113° 04.561' W	Helispot	2	45° 40.783' N	113° 49.668' W
Drop Point	19	45° 47.665' N	113° 01.347' W	Helispot	3	45° 39.866' N	113° 49.191' W
Drop Point	20	45° 45.601' N	113° 00.992' W	Helispot	30	45° 36.712' N	113° 49.839' W
Drop Point	21	45° 44.087' N	113° 00.985' W	Helispot	31	45° 36.602' N	113° 50.583' W
Drop Point	22	45° 50.431' N	113° 05.118' W	Helispot	32	45° 36.740' N	113° 50.883' W
Drop Point	23	45° 53.131' N	113° 10.064' W	Helispot	33	45° 35.523' N	113° 41.382' W
Drop Point	24	45° 51.002' N	113° 04.143' W	Helispot	36	45° 32.894' N	113° 43.971' W
Drop Point	25	45° 51.005' N	113° 05.738' W	Helispot	4	45° 39.850' N	113° 46.861' W
Drop Point	26	45° 51.493' N	113° 04.081' W	Helispot	41	45° 40.753' N	113° 38.650' W
Drop Point	27	45° 51.345' N	113° 05.914' W	Helispot	42	45° 52.229' N	113° 13.500' W
Drop Point	28	45° 51.457' N	113° 06.190' W	Helispot	42	45° 40.899' N	113° 41.641' W
Drop Point	29	45° 52.312' N	113° 09.124' W	Helispot	5	45° 41.477' N	113° 51.157' W
Drop Point	30	45° 52.300' N	113° 13.576' W	Helispot	51	45° 36.940' N	113° 54.294' W
Drop Point	31	45° 50.797' N	113° 05.682' W	Helispot	52	45° 36.941' N	113° 54.133' W
Drop Point	32	45° 50.797' N	113° 05.682' W	Helispot	53	45° 36.741' N	113° 55.946' W
Drop Point	33	45° 50.797' N	113° 05.682' W	Helispot	54	45° 35.859' N	113° 56.369' W
Drop Point	34	45° 50.797' N	113° 05.682' W	Helispot	55	45° 36.602' N	113° 50.583' W
Drop Point	35	45° 41.488' N	113° 03.218' W	Helispot	6	45° 38.544' N	113° 49.410' W
Drop Point	36	45° 49.631' N	113° 08.626' W	Helispot	61	45° 51.041' N	113° 10.231' W
Drop Point	37	45° 50.797' N	113° 05.682' W	Helispot	65	45° 48.797' N	113° 18.604' W
Drop Point	38	45° 50.797' N	113° 05.682' W	Helispot	66	45° 46.032' N	113° 15.732' W
Drop Point	39	45° 50.797' N	113° 05.682' W	Helispot	67	45° 52.102' N	113° 05.290' W
Drop Point	40	45° 52.300' N	113° 13.576' W	Helispot	68	45° 47.328' N	113° 01.218' W
Drop Point	41	45° 50.797' N	113° 05.682' W	Helispot	69	45° 49.430' N	113° 13.889' W
Drop Point	42	45° 50.797' N	113° 05.682' W	Helispot	7	45° 37.287' N	113° 51.437' W
Drop Point	43	45° 50.797' N	113° 05.682' W	Helispot	75	45° 45.897' N	112° 59.223' W
Drop Point	44	45° 50.797' N	113° 05.682' W	Helispot	8	45° 40.286' N	113° 52.043' W
Drop Point	45	45° 50.797' N	113° 05.682' W	Helispot	88	45° 50.807' N	113° 09.187' W
Drop Point	46	45° 50.797' N	113° 05.682' W	Helispot	9	45° 41.294' N	113° 56.150' W
Drop Point	47	45° 50.797' N	113° 05.682' W	Helispot	99	45° 50.194' N	113° 11.597' W
Drop Point	48	45° 50.797' N	113° 05.682' W	Helispot	A10	45° 52.724' N	113° 01.922' W
Drop Point	49	45° 50.797' N	113° 05.682' W	Helispot	T10	45° 39.376' N	113° 54.851' W
Drop Point	50	45° 50.797' N	113° 05.682' W	Helispot	ICP	45° 35.533' N	113° 27.272' W
Drop Point	51	45° 51.054' N	113° 10.262' W	Repeater	CMD 10 Odell	45° 34.782' N	113° 15.850' W
Drop Point	52	45° 50.041' N	113° 10.802' W	Repeater	CMD 11 Big Hole	45° 32.199' N	113° 49.276' W
Drop Point	53	45° 50.041' N	113° 10.802' W	Repeater	CMD 12 Sheep Mtn	45° 29.143' N	113° 45.606' W
Drop Point	54	45° 50.041' N	113° 10.802' W	Repeater	CMD 7 Dickie Pk	45° 53.847' N	112° 58.925' W
Drop Point	55	45° 50.041' N	113° 10.802' W	Repeater	CMD 9 Lost Trail Ski Pk	45° 42.222' N	113° 58.158' W
Drop Point	56	45° 50.041' N	113° 10.802' W	Repeater	LO22 HUB	45° 34.441' N	113° 14.900' W
Drop Point	57	45° 32.852' N	113° 55.841' W	Staging Area		45° 41.148' N	113° 55.991' W
Drop Point	58	45° 51.054' N	113° 10.262' W	Staging Area		45° 41.635' N	113° 56.854' W
Drop Point	59	45° 50.041' N	113° 10.802' W	Staging Area		45° 37.794' N	113° 58.153' W
Drop Point	60	45° 50.041' N	113° 10.802' W	Staging Area		45° 50.405' N	113° 15.074' W
Drop Point	61	45° 51.054' N	113° 10.262' W	Staging Area			
Drop Point	62	45° 50.041' N	113° 10.802' W	Staging Area			
Drop Point	63	45° 50.041' N	113° 10.802' W	Staging Area			
Drop Point	64	45° 50.041' N	113° 10.802' W	Staging Area			
Drop Point	65	45° 48.456' N	113° 18.876' W	Staging Area			
Drop Point	66	45° 48.295' N	113° 18.134' W	Staging Area			
Drop Point	67	45° 32.659' N	113° 44.741' W	Staging Area			
Drop Point	67A	45° 32.874' N	113° 46.174' W	Staging Area			
Drop Point	68	45° 47.391' N	113° 16.750' W	Staging Area			
Drop Point	70	45° 49.221' N	113° 13.207' W	Staging Area			
Drop Point	A10	45° 46.467' N	113° 00.025' W	Staging Area			



Transportation
Alder Creek 36,905 Acres
Trail Creek 61,990 Acres
Sand Lake 228 Acres
10/03/2021 2043 MDT
10/4/2021



- US Highway
- State Highway
- Local Route
- Helibase
- Unimproved Landing Area
- Division Break
- Incident Command Post
- Drop Point
- Camp
- Staging Area
- Mobile Weather Unit
- Repeater
- Safety Zone

