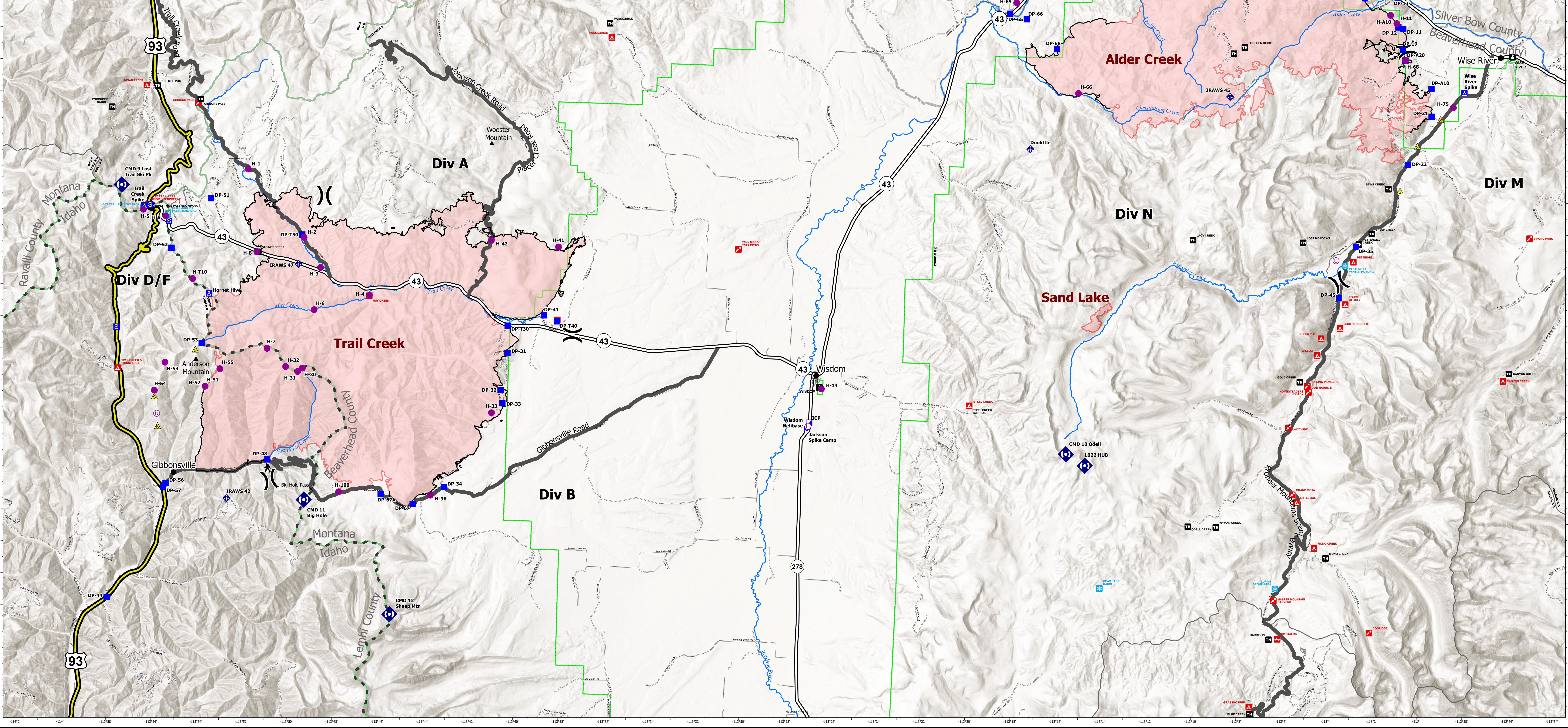


| FC Point Type | Label              | Latitude WGS84 DDM | Longitude WGS84 DDM | FC Point Type         | Label                   | Latitude WGS84 DDM | Longitude WGS84 DDM |
|---------------|--------------------|--------------------|---------------------|-----------------------|-------------------------|--------------------|---------------------|
| Camp          | Hornet Hive        | 45° 38.932' N      | 113° 54.099' W      | Drop Point            | A20                     | 45° 47.328' N      | 113° 01.218' W      |
| Camp          | Jackson Spike Camp | 45° 35.333' N      | 113° 27.357' W      | Drop Point            | A30                     | 45° 53.271' N      | 113° 03.131' W      |
| Camp          | Trail Creek Spike  | 45° 41.631' N      | 113° 57.009' W      | Drop Point            | T30                     | 45° 38.253' N      | 113° 40.794' W      |
| Camp          | Wise River Spike   | 45° 46.361' N      | 113° 58.556' W      | Drop Point            | T40                     | 45° 38.637' N      | 113° 38.614' W      |
| Drop Point    | 11                 | 45° 48.317' N      | 113° 01.348' W      | Drop Point            | T50                     | 45° 40.868' N      | 113° 50.051' W      |
| Drop Point    | 12                 | 45° 48.354' N      | 113° 01.571' W      | Helibase              | Wisdom Helibase         | 45° 35.418' N      | 113° 27.236' W      |
| Drop Point    | 13                 | 45° 49.286' N      | 113° 01.636' W      | Helispot              | 1                       | 45° 42.848' N      | 113° 52.533' W      |
| Drop Point    | 14                 | 45° 49.235' N      | 113° 03.084' W      | Helispot              | 100                     | 45° 32.900' N      | 113° 48.040' W      |
| Drop Point    | 15                 | 45° 49.528' N      | 113° 03.444' W      | Helispot              | 11                      | 45° 48.974' N      | 113° 03.442' W      |
| Drop Point    | 16                 | 45° 49.582' N      | 113° 03.456' W      | Helispot              | 14                      | 45° 36.955' N      | 113° 26.776' W      |
| Drop Point    | 17                 | 45° 49.878' N      | 113° 03.976' W      | Helispot              | 2                       | 45° 40.783' N      | 113° 49.668' W      |
| Drop Point    | 18                 | 45° 50.194' N      | 113° 04.561' W      | Helispot              | 3                       | 45° 39.866' N      | 113° 49.191' W      |
| Drop Point    | 19                 | 45° 47.865' N      | 113° 01.347' W      | Helispot              | 30                      | 45° 36.712' N      | 113° 49.839' W      |
| Drop Point    | 21                 | 45° 45.601' N      | 113° 03.993' W      | Helispot              | 31                      | 45° 36.602' N      | 113° 50.944' W      |
| Drop Point    | 22                 | 45° 44.087' N      | 113° 00.985' W      | Helispot              | 32                      | 45° 36.740' N      | 113° 50.383' W      |
| Drop Point    | 23                 | 45° 50.431' N      | 113° 05.118' W      | Helispot              | 33                      | 45° 35.523' N      | 113° 41.382' W      |
| Drop Point    | 24                 | 45° 53.131' N      | 113° 10.064' W      | Helispot              | 36                      | 45° 32.894' N      | 113° 43.971' W      |
| Drop Point    | 25                 | 45° 51.002' N      | 113° 04.143' W      | Helispot              | 4                       | 45° 39.850' N      | 113° 46.981' W      |
| Drop Point    | 26                 | 45° 51.005' N      | 113° 05.738' W      | Helispot              | 41                      | 45° 40.753' N      | 113° 38.650' W      |
| Drop Point    | 26A                | 45° 51.493' N      | 113° 04.981' W      | Helispot              | 42                      | 45° 52.229' N      | 113° 13.500' W      |
| Drop Point    | 27                 | 45° 51.345' N      | 113° 05.914' W      | Helispot              | 42                      | 45° 40.899' N      | 113° 41.641' W      |
| Drop Point    | 28                 | 45° 51.457' N      | 113° 06.190' W      | Helispot              | 5                       | 45° 41.477' N      | 113° 57.157' W      |
| Drop Point    | 29                 | 45° 52.312' N      | 113° 05.124' W      | Helispot              | 51                      | 45° 36.940' N      | 113° 54.204' W      |
| Drop Point    | 31                 | 45° 37.404' N      | 113° 40.761' W      | Helispot              | 52                      | 45° 36.041' N      | 113° 54.133' W      |
| Drop Point    | 32                 | 45° 36.242' N      | 113° 41.013' W      | Helispot              | 53                      | 45° 36.741' N      | 113° 55.946' W      |
| Drop Point    | 33                 | 45° 35.835' N      | 113° 40.912' W      | Helispot              | 54                      | 45° 35.859' N      | 113° 56.369' W      |
| Drop Point    | 34                 | 45° 33.167' N      | 113° 43.367' W      | Helispot              | 55                      | 45° 36.602' N      | 113° 50.944' W      |
| Drop Point    | 35                 | 45° 41.488' N      | 113° 03.218' W      | Helispot              | 6                       | 45° 38.544' N      | 113° 49.410' W      |
| Drop Point    | 37                 | 45° 49.631' N      | 113° 08.626' W      | Helispot              | 61                      | 45° 51.041' N      | 113° 10.231' W      |
| Drop Point    | 38                 | 45° 50.787' N      | 113° 09.184' W      | Helispot              | 65                      | 45° 48.797' N      | 113° 18.604' W      |
| Drop Point    | 39                 | 45° 50.438' N      | 113° 10.350' W      | Helispot              | 66                      | 45° 46.032' N      | 113° 15.257' W      |
| Drop Point    | 41                 | 45° 38.611' N      | 113° 39.192' W      | Helispot              | 67                      | 45° 52.102' N      | 113° 05.396' W      |
| Drop Point    | 42                 | 45° 52.300' N      | 113° 13.576' W      | Helispot              | 68                      | 45° 47.328' N      | 113° 01.218' W      |
| Drop Point    | 43                 | 45° 50.797' N      | 113° 05.682' W      | Helispot              | 69                      | 45° 49.430' N      | 113° 13.889' W      |
| Drop Point    | 44                 | 45° 29.372' N      | 113° 58.149' W      | Helispot              | 7                       | 45° 37.287' N      | 113° 51.437' W      |
| Drop Point    | 45                 | 45° 38.872' N      | 113° 03.867' W      | Helispot              | 75                      | 45° 45.897' N      | 112° 59.023' W      |
| Drop Point    | 48                 | 45° 33.831' N      | 113° 51.254' W      | Helispot              | 8                       | 45° 40.286' N      | 113° 52.043' W      |
| Drop Point    | 51                 | 45° 41.896' N      | 113° 54.158' W      | Helispot              | 88                      | 45° 50.807' N      | 113° 09.187' W      |
| Drop Point    | 52                 | 45° 40.313' N      | 113° 55.840' W      | Helispot              | 9                       | 45° 41.294' N      | 113° 56.150' W      |
| Drop Point    | 53                 | 45° 38.281' N      | 113° 10.350' W      | Helispot              | 99                      | 45° 50.192' N      | 113° 11.507' W      |
| Drop Point    | 56                 | 45° 32.970' N      | 113° 55.724' W      | Helispot              | A10                     | 45° 48.727' N      | 113° 01.920' W      |
| Drop Point    | 57                 | 45° 32.852' N      | 113° 55.841' W      | Helispot              | T10                     | 45° 39.376' N      | 113° 54.851' W      |
| Drop Point    | 61                 | 45° 51.054' N      | 113° 10.262' W      | Incident Command Post | ICP                     | 45° 35.533' N      | 113° 27.272' W      |
| Drop Point    | 62                 | 45° 50.041' N      | 113° 10.802' W      | Repeater              | CMD 10 Odell            | 45° 34.762' N      | 113° 15.850' W      |
| Drop Point    | 63                 | 45° 50.874' N      | 113° 11.199' W      | Repeater              | CMD 11 Big Hole         | 45° 32.199' N      | 113° 11.199' W      |
| Drop Point    | 64                 | 45° 50.623' N      | 113° 15.341' W      | Repeater              | CMD 12 Sheep Mtn        | 45° 29.143' N      | 113° 45.606' W      |
| Drop Point    | 65                 | 45° 48.456' N      | 113° 18.876' W      | Repeater              | CMD 7 Dickie Pk         | 45° 53.847' N      | 112° 58.925' W      |
| Drop Point    | 66                 | 45° 48.295' N      | 113° 18.134' W      | Repeater              | CMD 9 Lost Trail Ski Pk | 45° 42.222' N      | 113° 58.158' W      |
| Drop Point    | 67                 | 45° 32.659' N      | 113° 44.741' W      | Repeater              | LO22 HUB                | 45° 34.441' N      | 113° 14.960' W      |
| Drop Point    | 67A                | 45° 32.874' N      | 113° 46.174' W      | Staging Area          |                         | 45° 41.148' N      | 113° 55.991' W      |
| Drop Point    | 68                 | 45° 47.391' N      | 113° 16.750' W      | Staging Area          |                         | 45° 41.635' N      | 113° 56.854' W      |
| Drop Point    | 70                 | 45° 49.221' N      | 113° 13.207' W      | Staging Area          |                         | 45° 37.794' N      | 113° 58.153' W      |
| Drop Point    | A10                | 45° 46.467' N      | 113° 00.025' W      | Staging Area          |                         | 45° 50.405' N      | 113° 15.074' W      |



Transportation  
Alder Creek  
Trail Creek  
Sand Lake  
10/4/2021

Alder Creek 36,905 Acres  
Trail Creek 61,990 Acres  
Sand Lake 228 Acres  
10/03/2021 2043 MDT

- US Highway
- State Highway
- Local Route
- Helibase
- Unimproved Landing Area
- Division Break
- Incident Command Post
- Drop Point
- Camp
- Staging Area
- Repeater
- Helispot
- Safety Zone
- Mobile Weather Unit

