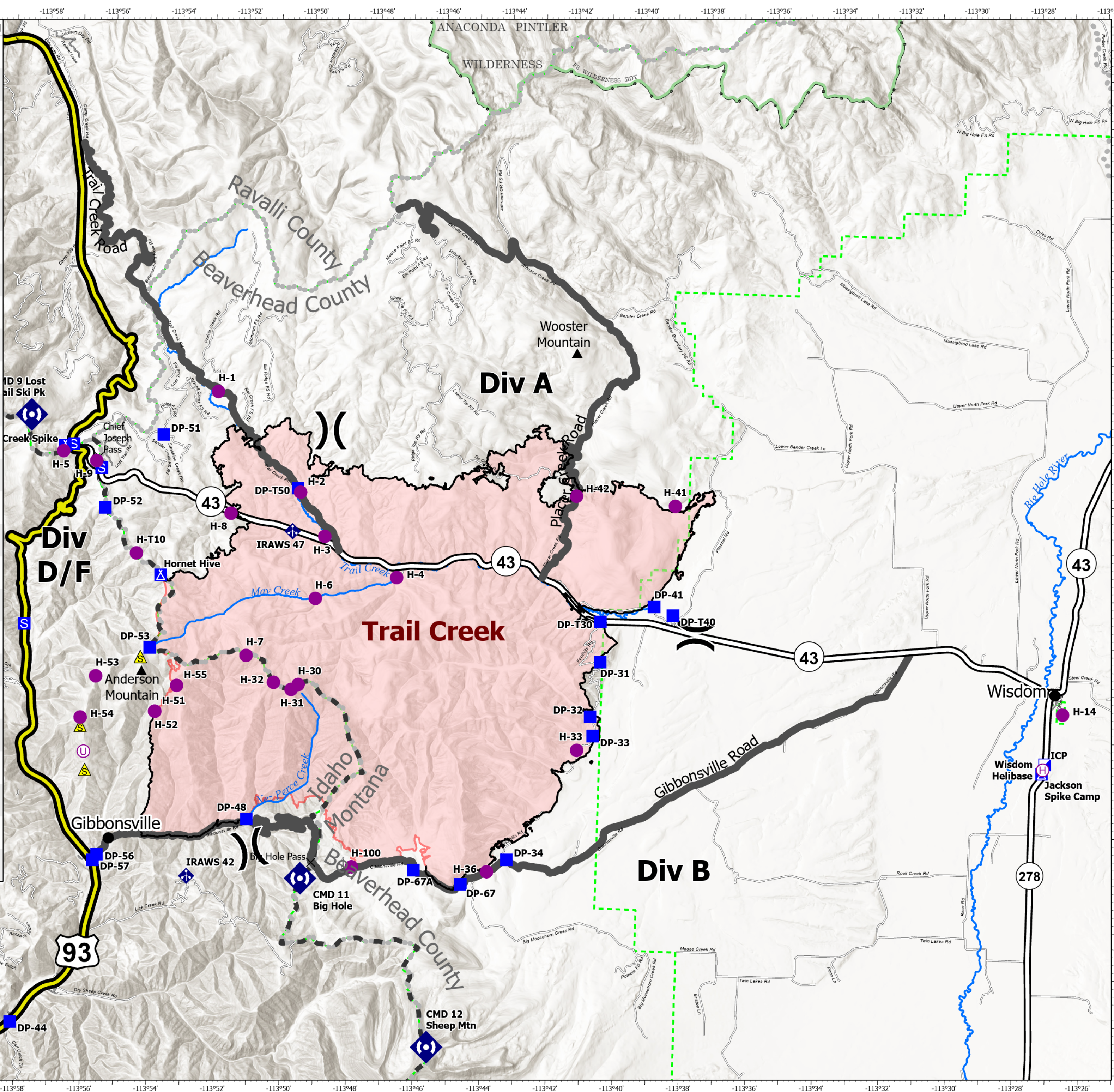


FC Point Type	Label	Latitude WGS84 DDM	Longitude WGS84 DDM
Camp	Hornet Hive	45° 38.932' N	113° 54.099' W
Camp	Jackson Spike Camp	45° 35.333' N	113° 27.357' W
Camp	Trail Creek Spike	45° 41.631' N	113° 57.009' W
Drop Point	31	45° 37.404' N	113° 40.761' W
Drop Point	32	45° 36.242' N	113° 41.013' W
Drop Point	33	45° 35.835' N	113° 40.912' W
Drop Point	34	45° 33.162' N	113° 43.387' W
Drop Point	41	45° 38.611' N	113° 39.192' W
Drop Point	44	45° 29.373' N	113° 58.149' W
Drop Point	48	45° 33.831' N	113° 51.254' W
Drop Point	51	45° 41.896' N	113° 54.158' W
Drop Point	52	45° 40.313' N	113° 55.840' W
Drop Point	53	45° 37.381' N	113° 54.350' W
Drop Point	56	45° 32.975' N	113° 55.724' W
Drop Point	57	45° 32.852' N	113° 55.841' W
Drop Point	67	45° 32.609' N	113° 44.741' W
Drop Point	67A	45° 32.874' N	113° 46.174' W
Drop Point	T30	45° 38.253' N	113° 40.794' W
Drop Point	T40	45° 38.437' N	113° 38.614' W
Drop Point	T50	45° 40.868' N	113° 50.051' W
Helibase	Wisdom Helibase	45° 35.418' N	113° 27.326' W
Helispot	1	45° 42.848' N	113° 52.553' W
Helispot	100	45° 32.900' N	113° 48.040' W
Helispot	14	45° 36.595' N	113° 26.776' W
Helispot	2	45° 40.783' N	113° 49.968' W
Helispot	3	45° 39.866' N	113° 49.191' W
Helispot	30	45° 36.712' N	113° 49.839' W
Helispot	31	45° 36.602' N	113° 50.044' W
Helispot	32	45° 36.740' N	113° 50.583' W
Helispot	33	45° 35.523' N	113° 41.382' W
Helispot	36	45° 32.894' N	113° 43.971' W
Helispot	4	45° 39.050' N	113° 46.981' W
Helispot	41	45° 40.753' N	113° 38.650' W
Helispot	42	45° 40.899' N	113° 41.641' W
Helispot	5	45° 41.477' N	113° 57.157' W
Helispot	51	45° 36.040' N	113° 54.124' W
Helispot	52	45° 36.041' N	113° 54.133' W
Helispot	53	45° 36.741' N	113° 55.946' W
Helispot	54	45° 35.859' N	113° 56.369' W
Helispot	55	45° 36.602' N	113° 53.498' W
Helispot	6	45° 38.544' N	113° 49.410' W
Helispot	7	45° 37.287' N	113° 51.437' W
Helispot	8	45° 40.286' N	113° 52.043' W
Helispot	9	45° 41.294' N	113° 56.150' W
Helispot	T10	45° 39.376' N	113° 54.851' W
Incident Command Post	ICP	45° 35.533' N	113° 27.272' W
Repeater	CMD 11 Big Hole	45° 32.619' N	113° 49.576' W
Repeater	CMD 12 Sheep Mtn	45° 29.143' N	113° 45.606' W
Repeater	CMD 9 Lost Trail Ski Pk	45° 42.222' N	113° 58.158' W
Staging Area		45° 41.148' N	113° 55.991' W
Staging Area		45° 41.635' N	113° 56.854' W
Staging Area		45° 37.794' N	113° 58.153' W



Transportation  
Trail Creek  
10/5/2021

Trail Creek 61,992 Acres  
10/04/2021 1906 MDT



- US Highway
- State Highway
- Local Route
- Helispot
- Helibase
- Unimproved Landing Area
- Division Break
- Incident Command Post
- Drop Point
- Camp
- Staging Area
- Repeater
- Safety Zone
- Mobile Weather Unit

