

# American Fork Fire

AirOps Topo Map

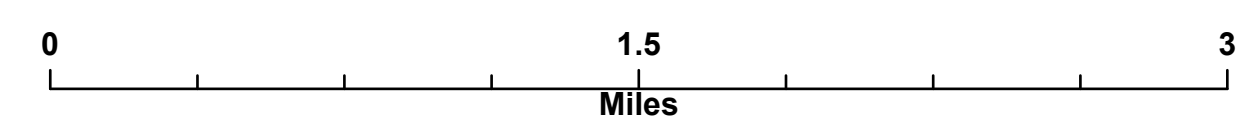
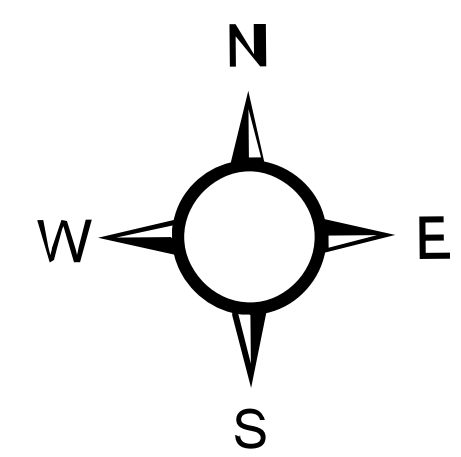
MT-HLF-5087

Approx. 5,806 GIS Acres  
@ 2230

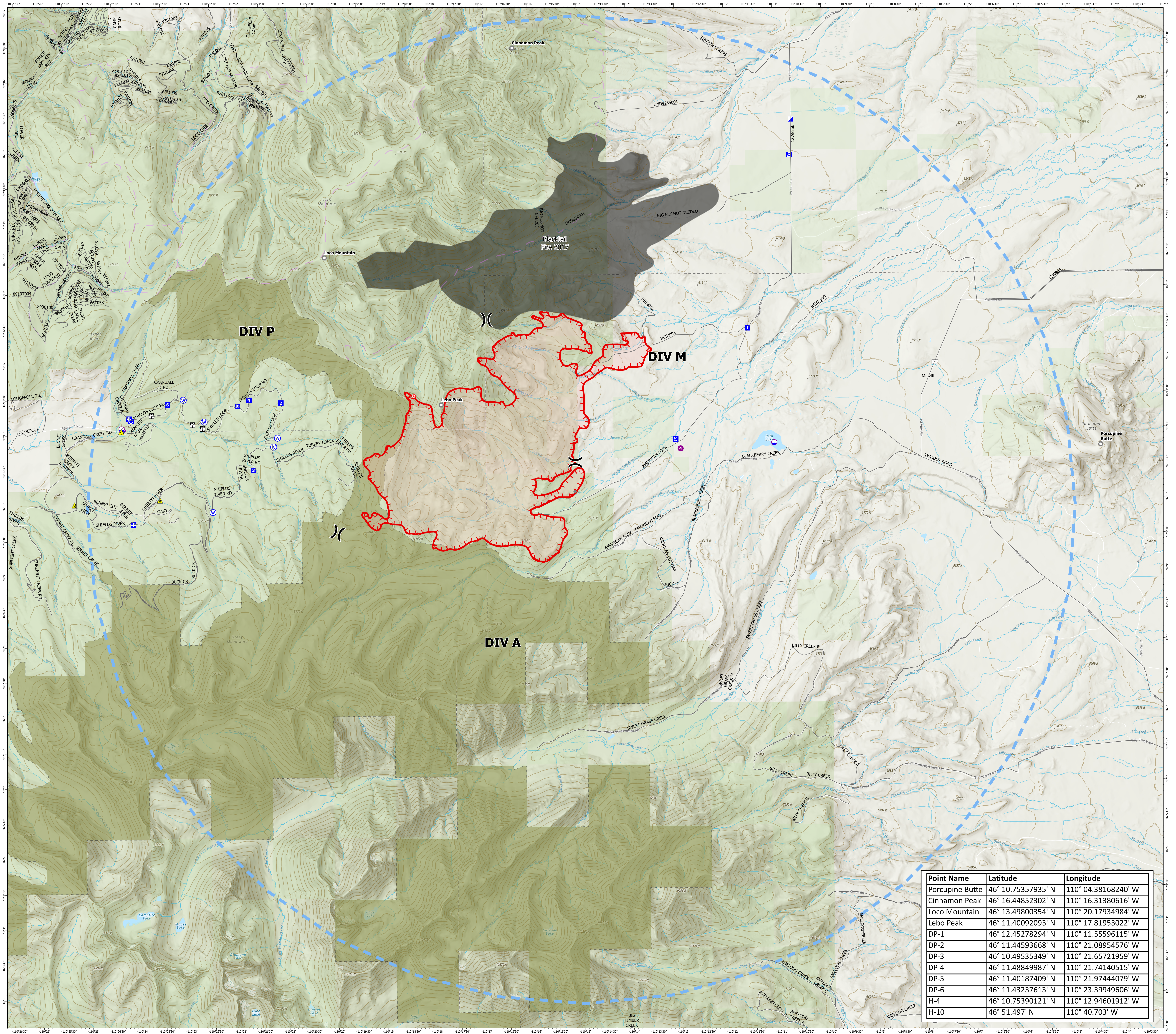
Operational Shift:  
7/25/21



- Label Point
- Dip Site
  - Helispot
  - ) Division Break
  - Medical
  - Incident Command Post
  - Drop Point
  - Camp
  - Staging Area
  - Lookout
  - Hot Spot - Spot Fire
  - Other
  - Landmark
  - ▲ Safety Zone
  - ⊕ Water Source
  - Temporary Flight Restriction
  - Fire Edge
  - Wildfire Daily Fire Perimeter
  - 200ft Contour
  - NHD Flowline
  - Highways
  - Trails
  - Trails
  - Trails
  - Inventoried Roadless Area
  - Montana Public Lands
  - Fire History Polygon
  - Roads
  - Agency Roads



Created By: SA Gold Team  
Date Exported: 7/24/2021 6:46 PM



Point Name	Latitude	Longitude
Porcupine Butte	46° 10.75357935' N	110° 04.38168240' W
Cinnamon Peak	46° 16.44852302' N	110° 16.31380616' W
Loco Mountain	46° 13.49800354' N	110° 20.17934984' W
Lebo Peak	46° 11.40092093' N	110° 17.81953022' W
DP-1	46° 12.45278294' N	110° 11.55596115' W
DP-2	46° 11.44593668' N	110° 21.08954576' W
DP-3	46° 10.49535349' N	110° 21.65721959' W
DP-4	46° 11.48849987' N	110° 21.74140515' W
DP-5	46° 11.40187409' N	110° 21.97444079' W
DP-6	46° 11.43237613' N	110° 23.39949606' W
H-4	46° 10.75390121' N	110° 12.94601912' W
H-10	46° 51.497' N	110° 40.703' W