

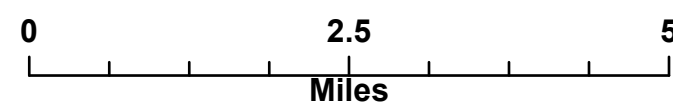
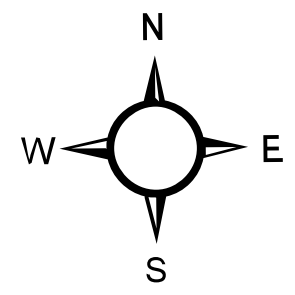
American Fork Fire

Operations Topo Map
MT-HLF-5087

Approx. 8,379 GIS Acres
@ 7/25 2125
Operational Shift:
7/27/2021

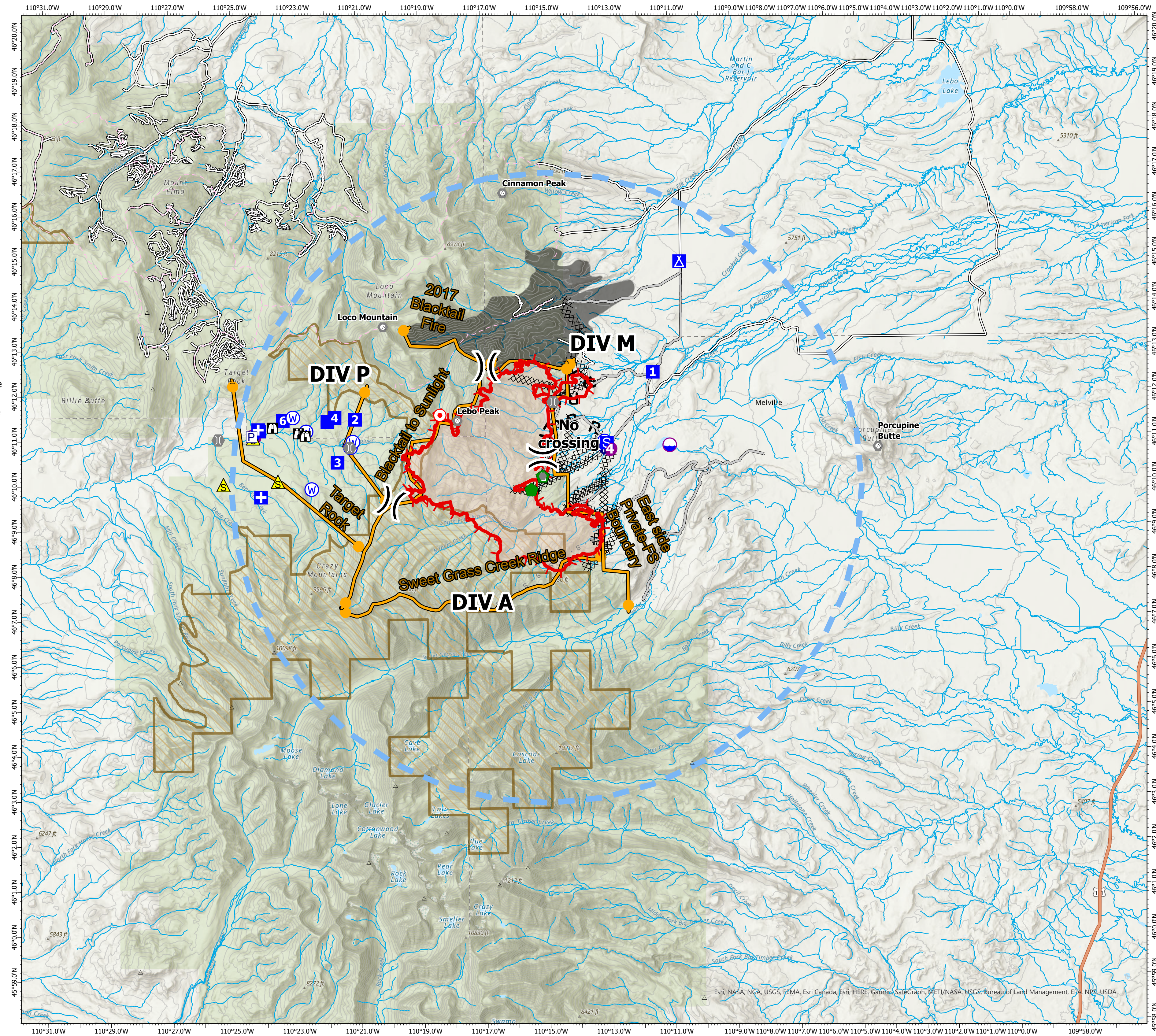


- △ Summit
- Label Point
- P Pump
- Dip Site
- Helispot
-)) Division Break
- ⊕ Medical
- ⊖ Drop Point
- ⊠ Camp
- ⊡ Staging Area
- ⊞ Lookout
- Hot Spot - Spot Fire
- Other
- ⊞ Landmark
- ⊞ Bridge
- Repair Point
- Dozer Push
- ⊠ Mobile Weather Unit
- ▲ Safety Zone
- ⊞ Water Source
- ⊞ Completed Dozer Line
- H Completed Hand Line
- R Completed Road as Line
- ⊞ Planned Dozer Line
- S - Planned Secondary Line
- Access or Improved Road
- Management Action Point
- Temporary Flight Restriction
- Fire Edge
- Trails
- Roads
- Highways
- 200ft Contour
- NHD Flowline
- Wildfire Daily Fire
- Perimeter
- Inventoried Roadless Area
- Fire History Polygon



Created by:
Date Exported: 7/26/2021 2055

North American 1983 Datum, Lat/Long Grid



Esri, NASA, NGA, USGS, FEMA, Esri Canada, Esri, HERE, Garmin, SafeGraph, METI/NASA, USGS, Bureau of Land Management, EPA, NPS, USDA