

American Fork Fire

AirOps Topo Map

MT-HLF-5087

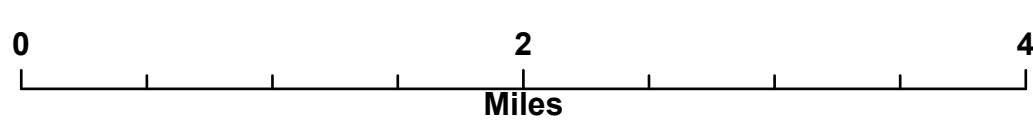
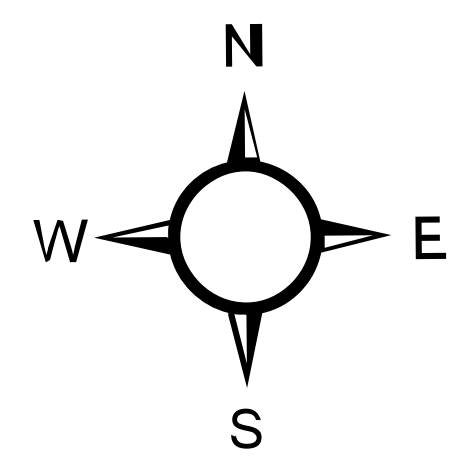
Approx. 14,325 GIS Acres

7/28/21 @ 2115

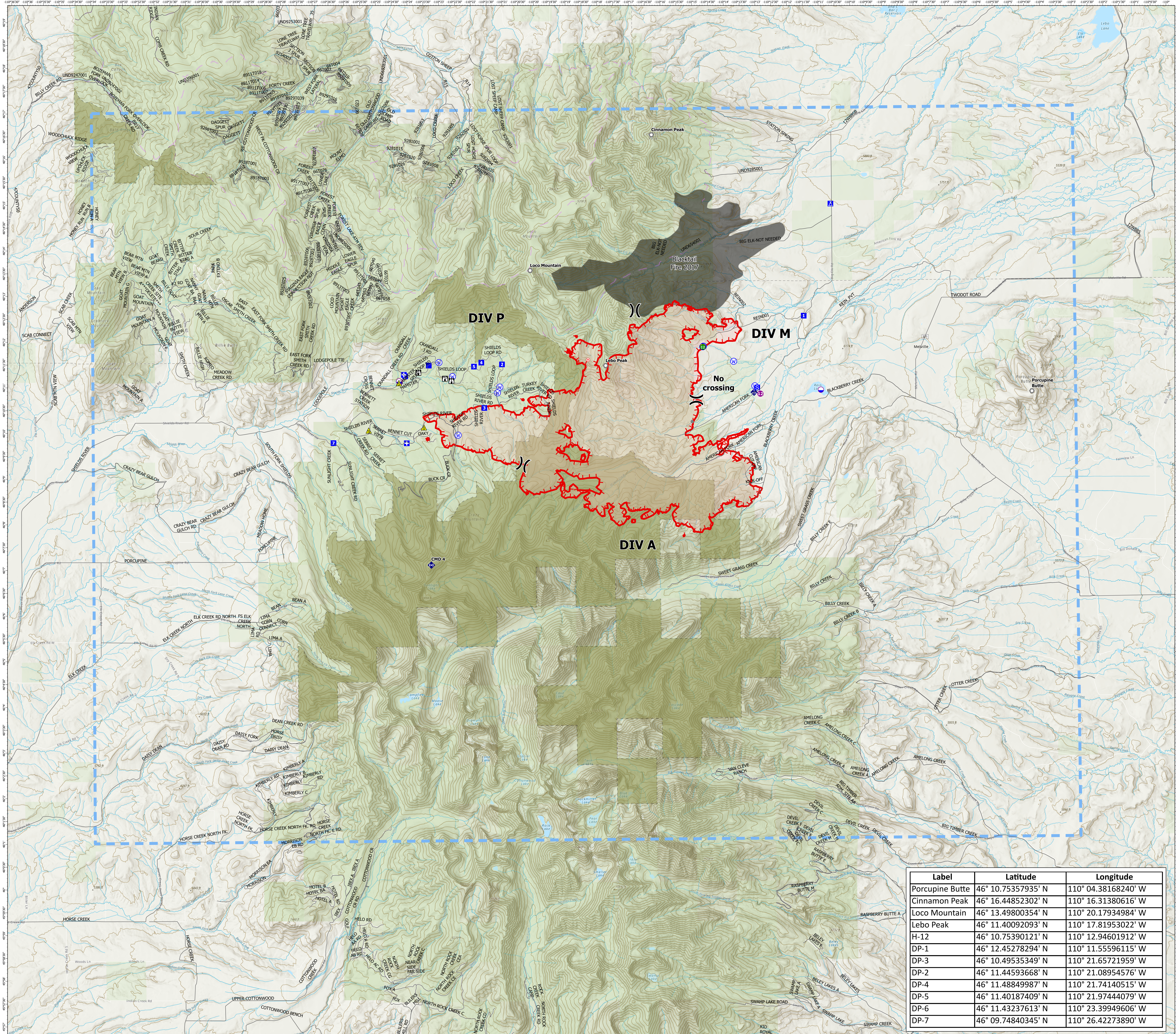
Operational Shift:
7/30/21



- Label Point
- Dip Site
- Helispot
-) Division Break
- Medical
- Drop Point
- Camp
- Staging Area
- Lookout
- Hot Spot - Spot Fire
- Other
- Landmark
- Stream Crossing
- ◆ Mobile Weather Unit
- ◆ Repeater
- ▲ Safety Zone
- ▲ Hazard
- ⊕ Water Source
- Temporary Flight Restriction
- Fire Edge
- Wildfire Daily Fire Perimeter
- 200ft Contour
- NHD Flowline
- Highways
- Trails
- Trails
- Trails
- Inventoried Roadless Area
- Montana Public Lands
- Fire History Polygon
- Roads
- Agency Roads



Created By: SA Gold Team
Date Exported: 7/30/21



| Label | Latitude | Longitude |
|-----------------|--------------------|---------------------|
| Porcupine Butte | 46° 10.75357935' N | 110° 04.38168240' W |
| Cinnamon Peak | 46° 16.44852302' N | 110° 16.31380616' W |
| Locho Mountain | 46° 13.49800354' N | 110° 20.17934984' W |
| Lebo Peak | 46° 11.40092093' N | 110° 17.81953022' W |
| H-12 | 46° 10.75390121' N | 110° 12.94601912' W |
| DP-1 | 46° 12.45278294' N | 110° 11.55596115' W |
| DP-3 | 46° 10.49535349' N | 110° 21.65721959' W |
| DP-2 | 46° 11.44593668' N | 110° 21.08954576' W |
| DP-4 | 46° 11.48849987' N | 110° 21.74140515' W |
| DP-5 | 46° 11.40187409' N | 110° 21.97444079' W |
| DP-6 | 46° 11.43237613' N | 110° 23.39949606' W |
| DP-7 | 46° 09.74840345' N | 110° 26.42273890' W |